

QUALITY DECLARATION

Labour Force Surveys (LFS)

Subject area

Labour market

Statistical area

Labour Force Surveys

Product code

AM0401

Reference time

2024

Contents

1	Relevance	3
1.1	Purpose and information needs	3
1.1.1	Purpose of the statistics	3
1.1.2	User information needs	3
1.2	Content of the statistics.....	4
1.2.1	Unit and population	4
1.2.2	Variables	5
1.2.3	Statistical measurements	6
1.2.4	Study domains	7
1.2.5	Reference times	7
2	Accuracy	7
2.1	Overall accuracy	7
2.2	Sources of uncertainty	8
2.2.1	Sampling	8
2.2.2	Frame coverage	9
2.2.3	Measurement	10
2.2.4	Non-response.....	11
2.2.5	Data processing	12
2.2.6	Model assumptions	13
2.3	Preliminary statistics compared with final statistics.....	13
3	Timeliness and punctuality	14
3.1	Production time	14
3.2	Frequency	14
3.3	Punctuality	14
4	Accessibility and clarity	14
4.1	Access to the statistics.....	14
4.2	Possibility of obtaining additional statistics	15
4.3	Presentation.....	15
4.4	Documentation	15
5	Comparability and coherence.....	16
5.1	Comparability over time	16
5.2	Comparability between groups.....	19
5.3	Other coherence	19
5.4	Numerical consistency	20
A	Classification of the Official Statistics of Sweden	22
B	Confidentiality and the processing of personal data	22
C	Archiving and discarding material	22
D	Obligation to provide information	22
E	EU regulations and international reporting.....	22
F	History	23
G	Contact details	23

Quality of the statistics

1 Relevance

1.1 Purpose and information needs

1.1.1 Purpose of the statistics

The purpose of the surveys is to describe the current labour market conditions for the entire population aged 15–74 and to provide information on the labour market trend.

As of January 2021, the frame population was enlarged to include the population aged 15–89 years, according to Regulation (EU) 2019/1700 of the European Parliament and of the Council. Presentation of the statistics will however still refer to the population aged 15–74 years. The labour force surveys (LFS) continuously provide a coherent picture of the labour market (employment, unemployment, hours worked, etc.). Consequently, the LFS forms an important basis for labour market, employment, and economic policy. The LFS is also used to assess progress in society from economic, social, and other angles.

1.1.2 User information needs

The design of the LFS takes its lead from International Labour Organization (ILO) conventions and recommendations. These have been developed in cooperation between governments, social partners, labour market economists and statisticians from all over the world. Since the start, the LFS has followed the ILO's recommendations.

The ILO Labour Statistics Convention reflects above all the statistical requirements of economic analysis. LFS must therefore be adapted to UN and EU requirements for labour market surveys and must be designed to be incorporated into the basis for the national accounts. The LFS is thereby included in the economic statistics.

As the survey is carried out in accordance with international guidelines and regulations, the results also form an important basis for general economic analysis and in international comparisons. The LFS meets important areas of both economic and social research needs with respect to data from the field of the labour market.

Parts of the LFS sample and variables are also used by several supplementary surveys, in which information on the labour market situation for the disabled and other related questions are collected¹. In 2024, a supplementary survey is being collected aimed at describing young people on the labour market.

The most important users of statistics include the Riksdag (Swedish Parliament), the Government (the Ministry of Employment, the Ministry of Enterprise and Innovation, the Ministry of Finance), the National Institute of Economic Research, the Riksbank (Sweden's central bank), the Swedish Public Employment Service and the social partners. The LFS is also used at Statistics

¹ This refers to the following surveys: The labour market situation for people with disabilities and Work-related disorders.

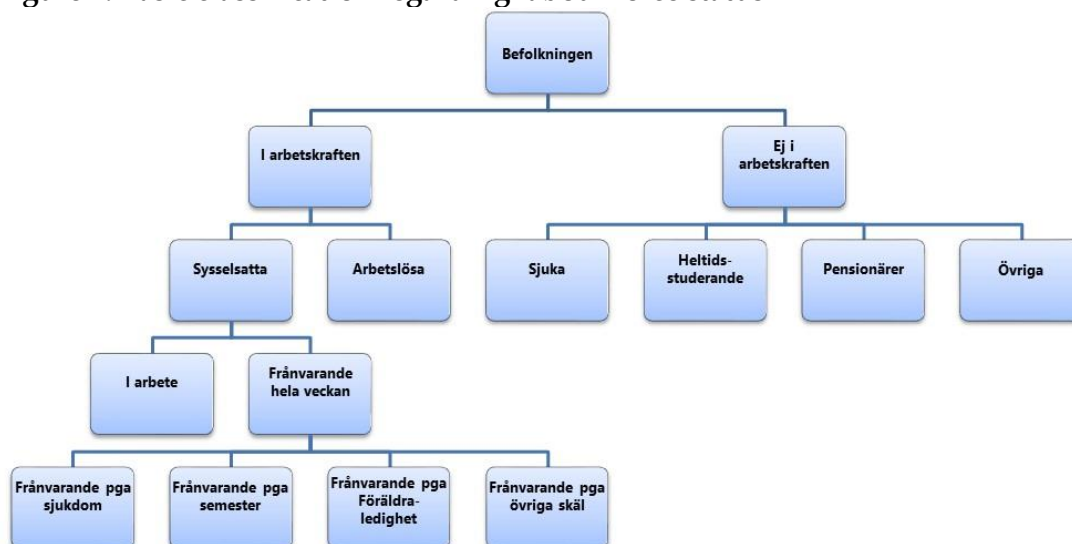
Sweden in work on the national accounts and in labour force analyses and forecasts.

1.2 Content of the statistics

The statistical target characteristics that are primarily estimated present the monthly number and proportion of people with different labour force status. Examples include employed people, *employment rate* (proportion of employed people in the population), number of unemployed people, *relative unemployment rate* (proportion of unemployed people out of the number of people in the labour force), number of people in the labour force and *economic activity rate* (proportion of people in the labour force out of the population).

Below, different categories of labour force status are shown, which are defined in more detail in section 1.2.2 *Variables*.

Figure 1. Basic classification regarding labour force status



1.2.1 Unit and population

In the LFS, the target population consists of people residing in private households, who have turned 15 years of age but not yet 90², and who were contained in the Swedish population register on 31 December (reference year).

This differs somewhat from the population of interest to main users, which could be said to consist of people who are 15 years and older, and who are usually residing in the country.

Despite the differences, it can be assumed that the target population is a good reflection of the population of interest for two reasons:

- It is assumed that most of the population of interest is contained in the population register and is thus included in the target population.

² In accordance with Regulation (EU) [2019/1700](#) of the European Parliament and of the Council, the target population was enlarged to encompass 15–89 years as of January 2021. Previously, it was 15–74 years.

- People older than 89 years participate to a very limited extent in the labour market.

There is no register information on LFS' new target population, or rather who do not belong to the target population. To deal with this, three groups have been identified as constituting the majority of those who do not belong to LFS's target population. These groups are used to adjust the auxiliary totals in the estimation procedure. The three groups that are excluded are:

- a) People who live in special housing, such as nursing homes, service homes or group housing
- b) Conscript or contract soldiers
- c) Prison inmates

There is no register information on LFS' new target population, or rather who do not belong to the target population. The population must therefore be estimated and thus, it varies more from month to month compared to if the equivalent information was retrieved from registers. From the introduction of the new framework law in January 2021, the population in the LFS has varied by at most approximately 26,000 from one month to another.

The observation units and target units both consist of individuals.

1.2.2 Variables

The main *target variables* are:

- in the labour force,
- employed,
- unemployed,
- not in the labour force, and
- actual number of hours worked

The labour force consists of people who are either employed or unemployed according to the definitions below. Others are classified as *not in the labour force* or with the synonym *outside of the labour force*.

The employed includes the following groups:

- People who, during a certain week (reference week), did some work (at least one hour), either as a paid employee, a self-employed person (including freelancers) or an unpaid helper in a business owned by a spouse or other member of the same family (=employed, at work).
- People who did not do any work as above, but who held a job as an employee, a position of helper in a family business or who were self-employed (including freelancers) and were temporarily absent during the entire reference week. Absence is included, both paid and unpaid (=employed, absent from work). The reason for absence could be illness, holiday, leave of absence (e.g., to care for children or to study), national service, labour dispute or leave for some other reason. As of January 2021, people who are absent from work due to certain reasons for absence in combination with an expected period of absence of three months or longer are not considered to be employed.

- People participating in certain labour market policy programmes count as employed. This can include labour market programmes for the disabled, programmes to start a business or employment with wage subsidies or employment support.

The unemployed includes the following groups:

- People who were without work during the reference week but who had actively looked for work at some point over the last four weeks (the reference week and the three previous weeks) and could work in the reference week or start within a fortnight of it ending.
- The unemployed also includes people who have obtained work that will begin within three months, on the condition that they could have worked during the reference week or started within a fortnight of it ending.

Not in the labour force (or outside the labour force) consists of people who are neither employed nor unemployed. The group includes students, pensioners, homemakers, latent job seekers, people with a long-term illness, etc.

Number of hours actually worked is the hours that a person has worked during the reference week. The hours that a person is to work, as agreed (or average working time for the self-employed, for example) is called "hours usually worked".

For definitions and a more comprehensive description of target variables, see *Terms and definitions LFS* on Statistics Sweden's website, www.scb.se/aku.

The target variables follow the ILO recommendations and EU regulations and are highly consistent with the interest variables identified among users.

The questions that form the basis for the observation variables are devised to minimise the risk of measurement error, and several questions can thus form the basis for an individual target variable. Therefore, in many cases, the difference between the individual observation variables and target variables is considerable. For a description of the relationship between target and observation variables, see the documentation in MetaPlus³ and the LFS questionnaire⁴.

Background variables mainly consist of demographic variables such as sex, age, civil status, educational attainment level, children at home, county of residence, metropolitan municipalities, and country of birth. Information on level of educational attainment and orientation is retrieved from the *Register on educational attainment of the population* and other information is retrieved from the *Total Population Register*.

1.2.3 Statistical measurements

Most of the statistics consist of *total number* and *mean values*, although *proportion* is common. In addition, the sampling uncertainty of the statistics is presented using estimated standard deviations.

³ <https://www.h6.scb.se/metadata/mikrodataregister.aspx> (Published later in the year)

⁴ [Labour force surveys \(LFS\) 14/01/2021 \(scb.se\)](http://www.scb.se/labour-force-surveys). The questionnaire is also available in SCBDOK/StaF.

1.2.4 Study domains

The statistical target characteristics are estimated for several different study domains – subgroups of the population – using classification variables in which background variables have a key role. Largely all classifications are combined with breakdowns by sex and age. Below is a brief overview of the classification variables.

For statistics on the population:

- Labour force status, children at home (number of children, the age of the youngest child and any children below 19 years of age), level of educational attainment, born in Sweden and born abroad.

For statistics on the employed:

- Degree of attachment to the labour market, industry, occupation, sector, studies, secondary job, usual and actual hours worked.

For statistics on the employed and employees:

- The number of people who work full-time or part-time, usual hours worked, reason for working less than desired, reason for working more than usual, average desired increase in working time.

For Statistics on the employed but temporarily absent:

- Main reason for absence, number of hours absent.

For statistics on the unemployed:

- Length of unemployment.

For statistics on people outside the labour force:

- Main activity, desire for and possibility of gainful employment.

For latent job seekers:

- Desired working hours.

For comprehensive information on study domains, please see the *LFS basic tables*.

1.2.5 Reference times

Reporting refers to month, quarter, and year. These are based on reference weeks and therefore differ slightly from calendar months, quarters, and years. One LFS month consists of four weeks or, once every three months, five weeks. One quarter consists of 13 weeks and one year consists of 52 weeks. When the year consists of 53 reference weeks, October includes five weeks in the LFS. This last occurred in 2020 and will next occur in 2026.

2 Accuracy

2.1 Overall accuracy

The statistics carry uncertainty. The sources of uncertainty and their consequences are described in section 2.2 *Sources of uncertainty*.

As of April 2005, a Generalised Regression Estimator (GREG estimator) has been used in the estimation process. Uncertainty figures associated with the estimations are presented in basic tables and in the Statistical Database. The results from the LFS carry some uncertainty because for instance they consist of estimations based on a sample of the Swedish population. Random

uncertainty in an estimation, which is primarily due to sampling error, sample uncertainty, can be expressed with an uncertainty figure, which is calculated using standard deviations.

Using an uncertainty figure enables forming an opinion of the estimation uncertainty and whether differences over time are random or statistically significant. If the difference is greater than the uncertainty figure, it is said that the change is statistically significant; in other cases, it is said that the difference is within the statistical margin of error – that is, it is random.

To make it easier to judge the accuracy of estimations and to determine whether changes over time are statistically significant, uncertainty figures are presented for all basic tables in the LFS. The compilation of tables consists of three parts: the first part contains uncertainty figures for level estimations, the second part contains uncertainty figures for the change between consecutive months (for example the change between January and February of the same year) and the third part contains uncertainty figures for changes over a one-year horizon. The table numbering in each of the three parts is consistent with that used in the basic tables, see the table of contents for the basic table concerned.

When assessing how various sources of uncertainty affect the statistics from a survey, a distinction is made between random uncertainty, which makes the estimations less precise, and systematic errors, which skew the results in a certain direction. While statistical methods can often be used to estimate the effect of random uncertainty on accuracy, it is often more difficult to say how any systematic errors affect the results. The latter requires special, often resource-heavy, evaluation initiatives, and is thus only done intermittently.

The term “total uncertainty” refers to total uncertainty = random uncertainty + systematic error. Studies indicate that systematic errors have a negligible effect on most of the LFS statistics, and that the presented confidence intervals thus provide a good understanding of accuracy.

2.2 Sources of uncertainty

The sources of uncertainty that are of greatest significance to the LFS are sampling (due to a specific sample having been studied), non-response (due to answers being missing completely or partly for some people in the survey) and measurement (mainly due to misunderstanding questions or answers).

2.2.1 Sampling

The sample consists of a subset of the population (12–89 years) drawn from the Total Population Register (see section 2.2.2 *Frame coverage*). The sampling strata are created by using information from the Total Population Register. The sampling process is a stratified systematic sample with rotating panel samples. The sample is rotated such that one eighth is replaced between two consecutive survey rounds. For each sample, this occurs every three months. This means that people in the sample are interviewed once a quarter and in total eight times over a two-year period, after which time they are replaced by new sample individuals.

People who cannot work due to long-term health problems, and people not in employment who are aged 70 or older and who are not looking for work, are interviewed once a year and in the eighth survey round.

The random uncertainty due to basing the survey on a sample is presented in the form of uncertainty figures. These can be used to create confidence intervals. These are available in the table packages published at www.scb.se/aku.

The monthly sample includes 17,000 individuals aged 15–89 years. The age group 16–64 years has a somewhat higher sampling fraction than other age groups. This is because participation in the labour force is low in the other age groups. The sampling fraction also varies among counties; for example, smaller counties have a higher fraction than larger ones. This is to enable county-wise reporting of the LFS.

2.2.2 Frame coverage

The Total Population Register makes up the frame, and the frame population is drawn from it. In 2024, the frame population comprises approximately 9,006,400 individuals. The Total Population Register is updated daily through notifications from the Swedish Tax Agency about births, deaths, relocation within the country, immigration, and emigration. The Total Population Register includes demographic variables (such as sex, age, place of residence according to the population register) that are used when drawing the sample and as starting values for the background variables (see section 1.2.2 *Variables*).

Deficiencies in coverage are partly due to the undercoverage that arises when people residing in Sweden are missing from the frame, and partly due to overcoverage that arises for instance when people in the frame are no longer included in the population.

The *undercoverage* that exists is mainly because immigrants (immigrants and people returning to Sweden) enter the Total Population Register with a certain lag. However, the effect on the statistics is negligible indeed. Another factor that adds to the undercoverage is that the sample is drawn once a year, and that the selected people are interviewed over a two-year period. This means that a sample panel drawn in a certain year does not consider people who will settle in Sweden during the subsequent interview period. However, this is only considered to have a marginal effect on the statistics.

Overcoverage is mainly due to the lag in reporting deaths and emigration. These people would rather not be included in the frame and the shortcoming in question is not usually detected either since these people cannot be reached for an interview. Thus, they can wrongly be classed as “non-response” even though the “overcoverage” category is the appropriate one.

Overall, these deficiencies lead to slight and undesired skewness in the statistics. The overcoverage in question is estimated to be in the range of 25,000–50,000 people. For more information, see section 2.2.4 *Non-response*.

In summary, Statistics Sweden considers that the deficiencies in the frame, both concerning undercoverage and overcoverage, do not distort the statistics in any significant way. The results of the register analysis published in 2017

indicate that coverage problems introduce bias of a size that cannot be expected to be negligible⁵. However, the view is divided; for certain study domains, the coverage problem appears to have a relatively negligible effect on accuracy in terms of the impact on both the total and the ratio estimates, while the opposite applies for other study domains. Even though there are diverging results, the overall conclusion is that the problem appears to be smaller when estimating ratios.

2.2.3 Measurement

Data collection

Information is collected by computer-assisted telephone interviews, according to a questionnaire available on Statistics Sweden's website⁶ and through web collection, starting in the second quarter of 2024. The number of interviewers conducting interviews varies between 150–180 interviewer per month. At the first occasion, all selected individuals undergo a telephone interview, when a so-called screening is done. Subsequently, individuals who are employed or self-employed, with a working time of 20 hours, are offered the opportunity to answer the questions themselves through a web form during subsequent interview sessions.

The selected people are informed about two weeks in advance by letter, digitally or by mail, that they have been chosen to take part, and about the upcoming telephone interview. During the first interview, a detailed study is made of the person's labour market situation, in general and for the specific reference week. On subsequent occasions, information on aspects such as occupation and workplace from the previous interview are used, but the same structure is otherwise followed. However, information about work situation during the reference week is registered each time, regardless of previous answers.

In some cases, for example in the event of illness or language difficulties, a proxy interview is held, which means that another person answers on behalf of the selected person. In the event of language difficulties, attempts are made as far as possible to obtain an interview directly with the selection person in their language (for example, an interpreter or family member) before an indirect interview is conducted. In 2023, 2.3 percent were proxy interviews. According to the latest available figures, which refer to 2020, the average among the European countries was 34.0 percent proxy interviews⁷.

Interviews concerning a certain reference week begin the day after the end of the week. Most of the interviews are conducted within 15 days after the reference week.

In 2012, co-listening in interviews was introduced centrally at Statistics Sweden as part of efforts to ISO-certify the operations. As of 2021, ISO certification does not apply to Statistics Sweden, although the ambition is to maintain quality-related work at a high level. In 2023 also, 5 percent of all interviews are marked for co-listening in the same way as before. As the

⁵ <https://www.scb.se/publikation/32407>

⁶ [Labour Force Surveys \(LFS\) 14/01/2021 \(scb.se\)](https://www.scb.se/publikation/32407)

⁷ [Quality report of the EU LFS 2020 \(europa.eu\)](https://ec.europa.eu/eurostat/tgm/table.do?tab=table&init=1&language=en&plugin=1)

sample consists of recurring panels, co-listening is carried out for 5 percent of unique individuals during the year; that is, co-listening does not occur for any sample person more than once. The goal is for all interviewers to have a co-listener once a quarter. Co-listening is compiled in a validation report issued each quarter.

Measurement error

Statistics Sweden conducted what is known as a re-interview study in 2012 and 2013 in which sample people who had participated in the LFS were contacted again to obtain an understanding of measurement errors and their potential distortion effect in the LFS. The study showed that data did not contain any major (net) measurement errors. The proportion of interviewees who were incorrectly classified in terms of labour force status (employed, unemployed, not in the labour force) amounted to 2 percent, and the degree of attachment (fixed, loose, no attachment) was 6 percent. For a detailed description of the results, see background facts *Measurement errors in LFS* on Statistics Sweden's website⁸.

2.2.4 Non-response

Non-response occurs when the value of one or more variables in a survey cannot be collected. If all the values for an observation unit are missing, this is called unit non-response. If only some of the values are missing, it is a question of item non-response.

The main reasons for unit non-response are either that the person in question could not be reached for an interview or declined to take part in the survey. The non-response for each survey round is presented on Statistics Sweden's website in the LFS basic tables.

A sample person is considered to answer the questions – that is, not a unit non-response – if answers are obtained to the questions that form the basis for classification of labour force status (employed, unemployed, not in the labour force) and degree of attachment to the labour market. If the sample person is classified as a respondent but information is missing for questions other than these, item non-response occurs for the question concerned. This applies if the respondent is the person providing the answers; if it is a proxy interview, item non-response is also permitted for questions regarding job seekers that form the basis of labour force status.

In 2023, unweighted non-response was 56.8 percent, while in 2022 it was 55.5 percent. Non-response was greatest in the age groups 15–24 years and 25–34 years. For a summary description of the progression of non-response over time, see section 5.1 *Comparability over time*. Background facts concerning non-response patterns in the LFS were published in 2015 and are available on Statistics Sweden's website⁹.

⁸ http://share.scb.se/OV9997/data/AM0401_2014A01_BR_AM76BR1402.pdf

⁹ <https://www.scb.se/hitta-statistik/statistik-efter-amne/arbetsmarknad/arbetskraftsundersokningar/arbetskraftsundersokningarna-aku/pong/publikationer/bakgrunds fakta-bortfallsmonster-i-aku/>

Measures to minimise error as a result of non-response

To reduce the distortion effects of non-response, since 1993 Statistics Sweden has been using auxiliary information in the estimation process. This auxiliary information has varied over time and today information is used from the Total Population Register, employer returns at the individual level and the Swedish Public Employment Service's job seeker register. The auxiliary information consists of variables that are correlated with central LFS variables and with the breakdown into response and non-response. For a detailed description, see background facts *Sampling and estimation procedure in the Swedish LFS 2005–* on Statistics Sweden's website¹⁰.

Apart from these measures, no further adjustments are made for either unit non-response or item non-response. Substitution (replacing a respondent's missing answers with answers from another person) and imputation (assumptions about how a person would have answered) are not methods used in the LFS. A study on the effects of non-response on estimates and results was published in 2017 in the form of *background facts*¹¹. The results showed that, at an aggregated level, the relative non-response bias for the employed was 1.1 (± 0.4) percent, for the unemployed 2.9 (± 4.9) percent, and for those not in the labour force -2.7 (± 0.9) percent. The size of the non-response bias varies among different study domains; the highest levels are seen when the breakdown is according to level of educational attainment.

2.2.5 Data processing

Data registration

Because the telephone interviews are computer-assisted, most of the data registration occurs immediately when data is collected.

Checking, and any changes, are mainly carried out during the interview by examining logical relationships and reasonableness. Computer-assisted controls for this are built into the interviewing software. In connection with downloading response data in the database tables, a further extensive round of checking and correcting is done of any registration errors from the time of the interview.

Coding

Because the telephone interviews are computer-assisted, most data registration occurs immediately when data is collected. The only other registration that is done is linked to the coding of the variables industry (SNI2007), sector (INSEKT2014), occupation (SSYK2012, ISCO-08) and socioeconomic group (SEI).

These variables are chiefly coded during the interview using matching against a list of occupations or through information retrieved from the employer declaration at individual level. For observations in which matching cannot be carried out directly during the interview, manual coding is carried out retroactively, based on open responses collected during the interview.

¹⁰ <https://www.scb.se/publikation/17711>

¹¹ <https://www.scb.se/publikation/32401>

In general, coding errors give rise to incorrect classifications, which in turn cause errors in the statistics. Some groups may be slightly overestimated in size, for example with respect to the number of people employed, at the expense of other groups, which are underestimated. Table 1 shows the 2023 estimate of the total coding error based on the results of previously conducted control studies of the coding¹².

Table 1. Results of studies to check coding in the LFS

Variable	Level	Percentage correctly coded
SSYK12	1	95.2
ISCO-08	1	94.9
SEI	2	93.7
SNI2007	LFS-dep	97.7
INSEKT 14	1	99.1

2.2.6 Model assumptions

Simple upward adjustment is used within the sampling stratum in the production of the statistics. This involves the assumption that inclination to respond, as a proportion, is homogeneous in the strata used in the sample design and that are based on, for example, region and sex.

Seasonal adjustment of the LFS time series is done with a method that is built into a standard program (X12-ARIMA¹³). The method uses time series analysis as a basis for trend cycle and seasonal component estimation. Seasonal adjustment in the LFS assumes that all timeseries follow an ARIMA model, without being transformed. For a detailed description of the LFS' seasonal adjustment system, see background facts *Consistent seasonal adjustment*¹⁴.

In certain circumstances, extreme values can be identified, known as outliers, for many of the LFS series. To avoid these outliers leading to erroneous revisions of earlier points in time, and to enable describing the sharp changes in the trend series, outlier correction is applied when estimating the seasonally adjusted and trend values for certain months and series. The corrections can for instance express themselves as level shifts in the trend series. This approach has been applied during the covid-19 pandemic.

2.3 Preliminary statistics compared with final statistics

Only final statistics are presented.

¹² Control studies were carried out in the years 2019 – 2021.

¹³ Findley, D. F., Monsell, B. C., Bell, W. R., Otto, M. C. and Chen, B. C. (1998). *New capabilities and methods of the X-12-ARIMA seasonal adjustment program (with discussion)*. J. Bus. Econ. Statist. 16, 127–177.

¹⁴ <https://www.scb.se/publikation/21099>

3 Timeliness and punctuality

3.1 Production time

Basic tables and seasonally adjusted data

Data collection is normally completed 14 days after the end of the last reference week of the month. After another three days, tables are published and the Statistical Database is updated for both the month and, where relevant, quarter. In connection with publishing tables that refer to the month of December as well as the final quarter, tables with annual averages are also published. Seasonally adjusted monthly and quarterly data is published at the same time as the monthly and quarterly basic tables.

Statistical news

For both the monthly and quarterly LFS, the results are published in a statistical news bulletin. For monthly data, this is published at the same time as tables and the statistical database. For quarterly data, the statistical news bulletin is published around seven weeks after the end of the reference period.

Statistical Reports

The production time for the annual Statistical Report that describes the labour market situation of the population aged 15–74 is around eight weeks from the end of the reference period. The production time for the thematic reports that are published two to three times a year varies.

3.2 Frequency

The LFS is conducted monthly, and the statistics are presented monthly, quarterly, and annually. This means that the LFS disseminates results 17 times in one year.

3.3 Punctuality

The dates for planned publishing in 2024 are available in the publishing calendar for Sweden's official statistics on Statistics Sweden's website¹⁵.

Statistics for 2023 were published in accordance with the publishing calendar.

4 Accessibility and clarity

4.1 Access to the statistics

Reporting refers to month, quarter, and year. The most important monthly results are initially presented in a *Statistical News* bulletin. At the same time, updates are made to the LFS table packages and the Statistical Database on Statistics Sweden's website, www.scb.se/aku.

The results are presented in detail in the LFS basic tables, which include non-seasonally adjusted data. The basic tables have included uncertainty figures,

¹⁵ <https://www.scb.se/hitta-statistik/publiceringskalendern/>

as of 2021. There is also seasonally adjusted data for month and quarter, trend estimations and linked data. For quarterly statistics, there are also flow tables and tables that describe the population not at work, the underemployed and young people who neither work nor study (NEET). In addition, several *Supplementary tables* by quarter and year, which are not included in Sweden's official statistics, are produced.

Quarterly results are presented in a statistical news bulletin and in an article in the Statistics Sweden publication, *Sweden's economy – a statistical perspective*. Annual results are regularly presented in the *Statistical Reports* series. The quarterly Statistical News bulletin and the annual Statistical Report contain a description of the situation on the labour market for the entire population aged 15–74. In addition, a report is published two to three times per year in the form of a thematic report. The purpose of the theme is to highlight labour market conditions for different groups in the population, for example.

Comprehensive monthly, quarterly, and annual data is published in the Statistical Database.

In addition, certain results are presented in Statistics Sweden's publication, "Sweden in figures".

4.2 Possibility of obtaining additional statistics

In addition to the table packages that are produced regularly, tables are produced on commission that cover various users' special needs.

4.3 Presentation

The monthly and quarterly results are presented in *Statistical News*, while annual results are published both as statistical news bulletins and *Statistical Reports* containing text, tables and charts describing the main results. For a description of the available table packages, see section 4.1.

Summary reports on statistics for previous years, with time series and presentations of definitions and survey methods, are available on Statistics Sweden's website. Publication series numbers for quarterly and yearly reports are AM 11 SM and AM 12 SM, respectively, with AM standing for the Labour market series. Since 2005, Statistical Reports have been published only online.

4.4 Documentation

Production of the statistics is described in *Production of the statistics* (StaF), which will be published in the second quarter of 2021. The quality of the statistics is described in this document. Detailed information about microdata is described in the *Documentation of microdata* (MetaPlus). All documentation is available on Statistics Sweden's website¹⁶.

¹⁶ <https://www.scb.se/lfs>

5 Comparability and coherence

5.1 Comparability over time

Major changes in the LFS

A description of major changes in the LFS follows below; for more detailed historical information, see Appendix 1.

In 1961, Statistics Sweden took over the responsibility for conducting the Labour Force Survey, which was quarterly at the time. Since 1970, the surveys have been conducted monthly. After that time, no major changes to the survey were made until 1987. To ensure that the survey would better reflect the current conditions and changes on the labour market, a comprehensive revision of the contents (including definitions) was made and implemented as of the 1987 survey. This revision made it more difficult to make historical comparisons. So as not to lose comparability of the results before and after 1987, data collection and processing were done for 1986 according to both the old and new procedures.

In 1993, a new procedure for estimations was introduced with revised non-response compensation (post stratification), as well as a new system for measuring weeks. Today, all reference weeks are measured over the year, while previously only two of the four or five weeks in a month were measured.

In April 2005, a new EU-adapted LFS was introduced, causing a new break in the time series. In addition to the general break in the time series, the method for producing estimations broken down by country of birth and citizenship was also changed, causing a break in the time series for these series. Previously, these estimates were computed separately from the regular LFS, which led to deficiencies in comparability between years, inadequate coherence with population totals in the Total Population Register and insufficient ability to sum up between the groups.

During 1987–2007, the Swedish concept of unemployment did not include full-time students who had looked for and were able to work. From the October 2007 LFS measurement and onwards, this was changed to follow international standards so that students who are actively looking for and are prepared to work count as unemployed.

The LFS has previously presented the age group 16–64 years. From the measurement for October 2007 and onwards, the LFS started reporting the age group 15–74 years. However, the tables present the age group 16–64 years as a sub-group.

From the release of the LFS for October 2007 and onwards, Statistics Sweden thus switched to presenting all results in accordance with the ILO recommendations and EU regulations.

Comprehensive linkage efforts were made in 2010 to bridge these breaks in time series. The series for the 15–74 age group are linked back to January 2001, when data collection started for this age group. All series for the 16–64 age

group in the LFS are linked back to 1987. Some central series are linked back to 1970.

On 8 June 2010, Statistics Sweden started to present the LFS based on the expanded sample, which included a total of 29,500 individuals per month. In connection with the June publishing, all LFS data was retroactively revised until and including January 2010.

As of the January 2013 LFS, estimates are based on a new estimator, whereby the method for aggregation of the two samples has been changed. The new estimator was also used to recalculate results retroactively until the January 2010 LFS, and thus replaced the previous aggregation estimator.

As of October 2019, data was presented as of July 2018 and onwards based on a reduced sample. At the time, the sample numbered 14,750 due to quality deficiencies in data from the external provider that managed half of the sample. As of January 2020, the LFS sample consisted of 16,700 people. Ahead of the second quarter of 2020, the sample was further enlarged and as of April 2020 it consisted of 18,200 people. The supplementary sample was phased out as of the third quarter of 2020. The reduced sample makes it more difficult to compare change estimations between years.

As of January 2021, the LFS is regulated by a new regulation for social statistics (Regulation 2019/1700). The new regulation brings certain changes in definitions of variables, population and sample, and the order in which questions are asked. Additionally, a few new variables were added, while others were removed. In 2021, the LFS published the same statistics as before, but without comparisons with previous years.

A selection of macro linked series, which allows comparison with previous years, has been published in 2022. In 2022 and 2023, work was done on micro linking of LFS to bridge time series breaks caused by the implementation of the new regulation. Linked data for the period 2005–2020 was published in October 2023, these are comparable to the data reported according to the new regulation from 2021. For some central series, there are macro linked data for the years 2001–2005. For the years 2001–2005, the macro linked central series are available for comparisons in the years before the micro linking.

From January 2021, there is a change in the auxiliary information used in the LFS. The change refers to the registers that are expected to co-vary with employed and unemployed, respectively.

From the Swedish Public Employment Service (Af) information about those registered with Af is used, where more job seeker categories from Af are now classified as unemployed in the auxiliary information. This to achieve better covariation with unemployed in the LFS. In addition to this change, monthly employer declarations at the individual level, AGI, are now used as auxiliary information instead of register-based labour market statistics, RAMS. This change means that monthly, instead of annual, data is used in the auxiliary information. In the analyses carried out prior to the change in the auxiliary information, it was seen that the new auxiliary information resulted in improvements of up to 10-15 percent in the precision for the selected estimates studied. However, these precision improvements vary depending on the estimate. In 2021, estimates have been calculated with the new and old

auxiliary information, respectively. For both sexes aged 15-74, the estimates based on the new auxiliary information are lower than the estimates based on the old auxiliary information for both employment and unemployment during 2021. For employed, the estimate based on the new auxiliary information is 30,000 lower and the employment rate is 0.4 percentage points lower. For unemployed, the estimate based on the new auxiliary information is 10,600 lower and the unemployment rate is 0.1 percentage points lower.

When the results from the micro linking was published in October 2023, several changes regarding the help information were implemented. This meant that previously published estimates as of January 2021 have been replaced with new estimates based on the new auxiliary information. The main change concerns the target population, see section 1.2.1, where this is no longer estimated but instead modelled in the auxiliary information. In addition, a change regarding country of birth in the help information has been introduced. Previously, country of birth was divided into four groups (born in Sweden; born in the Nordic countries except Sweden; born in Europe except the Nordic countries; born in the rest of the world), these are now combined with gender (male, female), which gives eight groups in the help information. In the help information, information about self-employed persons is obtained, this information was previously obtained from register-based labour market statistics (RAMS) and is now obtained instead from the Population's labour market status (BAS).

Classification changes

Since 2001, SUN 2000 has been applied for the classification of education. This, together with other measures to improve quality in the *Register of educational attainment of the population* (from which the LFS retrieves information on the level and orientation of education), causes a break in the time series compared to previously published estimations. In terms of the level of educational attainment, the quality improvement causes a sharp increase in certain levels compared with previous years, for instance for post-secondary education of three years or more. In 2020, SUN2020 was introduced.

An improvement in quality for the information on educational attainment level was made in 2012, with data for the period 2005–2011 being supplemented with additional register information. In 2012 and onwards, additional questions were added to the questionnaire concerning level of educational attainment. Because of this, there is a break in the time series compared with pre-2005 information.

The Swedish industrial classification SNI92 standard was used during 1995–2002 and SNI2002 was used during 2003–2008. In 2008, industry was double coded on SNI2002 and SNI2007. The SNI 2007 standard was used from the January 2009 LFS.

In 2015, the occupational classification SSYK 2012 was introduced. To facilitate comparability between old and new nomenclature, the LFS coded both SSYK 96 and SSYK 2012 in 2015. As of 2016, occupation is coded solely according to SSYK 2012.

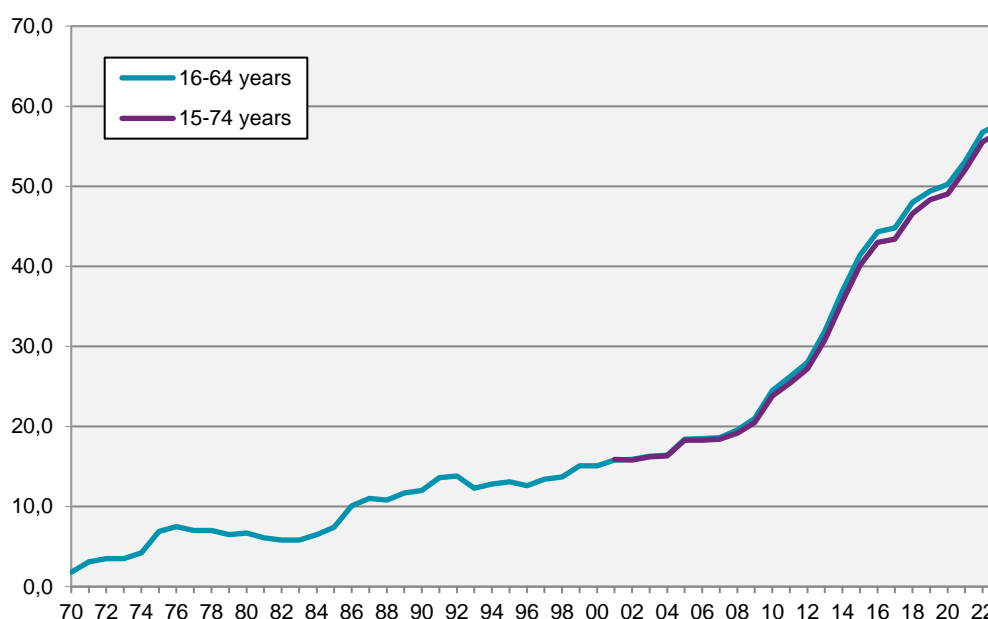
The sector breakdown was changed in 2001 according to the Institutional Sector Classification Standard, INSEKT 2000. For the LFS, this means that

public service companies (previously under central government) and the Church of Sweden (previously under municipalities) are reported as *private*, and that the government insurance offices (previously under municipalities) are reported as under central government. *Private sector* is an umbrella name in labour market statistics for entities that, according to the standard, do not belong to the central-government or municipal sector. The changes led to breaks in the time series. Estimations for the year 2000 have been produced for the sake of comparisons with the 2001 estimations. From the December 2014 LFS, sector reporting was updated according to INSEKT 2014. This change did not have any effect on the time series.

Progression of non-response over time

Chart 1 shows the progression of non-response over time in the age groups 16–74 years and 15–74 years. The chart shows that non-response for the LFS has doubled in the last ten years.

Chart 1. Non-response in the LFS 1970–2023, unweighted in percent on an annual basis



5.2 Comparability between groups

Comparability between different subgroups in the population is very good, since estimates for different groups are based on the same sample and estimator.

5.3 Other coherence

Besides the LFS, Statistics Sweden produces statistics on employment in some other surveys, particularly the *Population by Labour market status (BAS)* and *Enterprise-based employment statistics* as well as within the *National Accounts*. However, the results from these surveys are not entirely comparable with the LFS, mainly because of differences in definitions, survey methods and reference times. Information from BAS has been published since May 2022,

and the statistics should be seen as a supplement to the LFS. BAS is classified as official statistics from 2023 onwards. You can read more about the differences between LFS and BAS on the website¹⁷.

In addition, the Swedish Public Employment Service publishes monthly statistics on the number of job seekers (people registered as job seekers at the employment offices, and who could start work immediately). The monthly statistics from the employment office are a good complement to the LFS, especially because they cover the total population and can be broken down in more detail at the regional level than the LFS sample-based statistics. However, the statistics are not entirely comparable with those of the LFS.

A comparison of the unemployed according to the LFS with people registered as unemployed with the Swedish Public Employment Service in 2015 showed good coherence in terms of the number of unemployed people according to the two different sources. However, coherence varied in the different groups and a breakdown by age showed that the number of unemployed youths was clearly higher in the LFS compared with the number of youths registered as unemployed with the Swedish Public Employment Service. There were also considerable gross differences between the two statistical sources. This means that there were unemployed people registered with the Swedish Public Employment Service who were employed or outside the labour force in the LFS, and that there were unemployed people in the LFS who were not registered as unemployed with the Swedish Public Employment Service. A similar comparison in 2016 also showed differences in the period of unemployment. For more detailed descriptions of how differences affect coherence, see background facts on the website¹⁸.

As of the measurement for October 2007, the LFS follows international recommendations and standards for classification. Therefore, coherence with labour force surveys of other countries is good.

5.4 Numerical consistency

Estimates in all table packages are consistent, with the following exceptions:

- The table packages that contain flow estimates are not consistent with cross-sectional data. Since they are based on only the part of the

¹⁷ How does BAS relate to LFS and the statistics of the employment service? (In Swedish)
<https://www.scb.se/contentassets/3a95e1cdea3b49de9ef2381c0248c2ca/hur-forhaller-sig-bas-till-aku-och-arbetsformedlingens-statistik.pdf>

¹⁸ Comparative study LFS and Swedish Public Employment Service – Period of unemployment according to LFS and period without work according to the Swedish Public Employment Service:

<https://www.scb.se/publikation/36661>

Comparative study LFS and Swedish Public Employment Service 2015:

<https://www.scb.se/publikation/29205>

Background facts: Unemployment statistics from the Labour Force Surveys (LFS) and the Swedish Public Employment Service – A comparative study, 2011:

<https://www.scb.se/publikation/21177>

sample that overlaps between two quarters (7/8), minor differences in the estimates arise.

- In the seasonally adjusted series where industry and sector occur, a minor difference emerges in relation to the table packages that contain cross-sectional data. This difference is caused by the fact that the series for missing information concerning industry or sector is not seasonally adjusted.

General information

A Classification of the Official Statistics of Sweden

The statistics are official statistics.

With regard to statistics included in Official Statistics of Sweden (SOS), special rules apply for quality and accessibility, see the Official Statistics Act ([2001:99](#)), the Official Statistics Ordinance ([2001:100](#)), and the Statistics Sweden Regulations on the Quality of the Official Statistics ([SCB-FS 2016:17](#)).

B Confidentiality and the processing of personal data

In the special task of agencies for producing statistics, confidentiality applies according to Chapter 24, Section 8 of the Public Access to Information and Secrecy Act ([2009:400](#)).

To protect the data on natural persons or enterprises that is subject to confidentiality, it is ensured that such data cannot be disclosed directly or indirectly in the published statistics.

With regard to personal data – that is, information that can be directly or indirectly attributed to a living person – the Official Statistics Act ([2001:99](#)), the Official Statistics Ordinance ([2001:100](#)) and the EU General Data Protection Regulation ([2016/679](#)) apply.

C Archiving and discarding material

A copy of all statistical reporting in the form of reports, books and Statistical Reports that have been published as printed matter or presented as pdf documents is archived at the Royal Library of Sweden and delivered to the National Archives.

According to the Official Statistics Act, personal data shall be discarded when it is no longer needed for its purpose. However, the government or the National Archives may prescribe exceptions to this obligation, in consideration of national cultural heritage or research needs. According to the preservation decision of the National Archives [RA-MS 2007:64](#), the Labour Force Surveys are exempted from the rules on discarding materials.

Information on individuals is currently stored at Statistics Sweden from the survey of 1987 and onwards in a PC environment. The 1962–1998 survey rounds in a mainframe computer environment are archived at the National Archives.

D Obligation to provide information

There is no obligation to provide information regarding these statistics.

E EU regulations and international reporting

As of January 2021, the LFS is regulated by the new EU regulation on social statistics (regulation No [2019/1700](#)) of the European Parliament and of the Council, which replaced EU regulation No [577/98](#) from 2001. From 2007, the international harmonised definition of unemployment applies. The LFS is governed by several regulations. A complete list of regulations is available on Eurostat's website, www.ec.europa.eu/eurostat/www.ec.europa.eu/eurostat.

Microdata is delivered quarterly to the EU according to the specification in prevailing EU regulations.

LFS is a survey based on individuals, but to fulfil the requirements of the EU, the conditions on the labour market for households are also studied. This is done for one-eighth of the sample. Household data is delivered to Eurostat, which publishes it on its website, www.ec.europa.eu/eurostat/www.ec.europa.eu/eurostat. In addition, special in-depth studies and ad-hoc surveys, are conducted annually on various themes requested by Eurostat. In 2024, the theme is young people on the labour market.

Each year, several tables are delivered to the OECD's labour market publications, as well as tables with a focus on education variables for the publication *Education at a Glance*¹⁹.

F History

The first Swedish labour market survey was conducted by the Swedish Labour Market Board (AMS) in May 1959. In August 1961, Statistics Sweden took over responsibility for conducting the survey. During the period 1961–1969, quarterly surveys were carried out, and since 1970 the surveys have been conducted monthly. Since 1993, the survey has been conducted regularly every week throughout the year. Since 2007, the survey has been fully aligned with international guidelines and regulations. For a broader historical overview, see Appendix 1.

G Contact details

Statistical agency	Statistics Sweden
Contact information	Department of Social Statistics and Analysis
E-mail	aku@scb.se
Telephone	010-479 40 00

¹⁹ <https://www.oecd.org/education/education-at-a-glance/>

Appendix 1. History, chronological

Event	Time	Description
Micro linking, auxiliary information, and a variable of side job.	2023	<p>A processing to link the time series break through a micro approach has been carried out. This means that it is theoretically possible to produce all possible series that are in demand. Micro linking has been carried out for the period January 2005 – December 2020 for the population aged 15–74 so that linked data for this period is comparable to data reported according to the new regulation from January 2021 onwards.</p> <p>New auxiliary information has been implemented and means that the target population is modelled in the auxiliary information instead of being produced as an estimate. In addition, the auxiliary information has also changed regarding the grouping by country of birth and which source is used to classify entrepreneurs in the auxiliary information. This new auxiliary information has been implemented in the estimates from January 2021.</p> <p>A new variable for agreed time in the side job has been introduced. The corresponding variable existed before the new regulation but does not appear for the year 2021–2022. The variable was not included when the regulation came into force in 2021, as it was no longer a requirement from Eurostat. But because it's needed for the national publication, it has been introduced again in 2023.</p>
Sampling and linked series	2022	<p>The double survey that took place in 2021 has been completed and for 2022, the entire sample will receive the new questionnaire. The sample size has been changed to approximately 17,000 people.</p> <p>With the publication of January 2022, on 24 February, a selection of linked series was also published, by month, as a result of the time series break with the introduction of the new EU regulation (2019/1700). Work is underway to link additional series by</p>

		month, quarter, and year. These will be published later in the year.
Implementation of Regulation (EU) 2019/1700 of the European Parliament and of the Council	2021	<p>The new regulation entered into force in 2021 and brought a few minor definition changes concerning the employed and unemployed. In addition, the frame population changed to include people aged 15–89 years, from 15–74 years previously. The LFS will, however, primarily continue to report statistics for the group 15–74 years. The flow of questions has been changed somewhat as imputation harmonisation must apply between Member States. Finally, new auxiliary information (AGI) in estimating statistical values has been introduced to improve precision in the LFS.</p> <p>The changes have caused a break in the time series and double measurement have been carried out during 2021, whereby 80 percent of the total sample of 18,200 people was collected through the new questionnaire, following the new regulations. 20 percent of the sample was collected using the old questionnaire. This to make it possible to link data backwards in time.</p>
Revision and sample reduction	2019	The LFS reduced the sample in the October LFS by 50 percent to 14,750 due to quality deficiencies in data from the external provider that managed half of the sample. The estimations were also revised retroactively until July 2018. The revisions are also based on the reduced sample.
New occupational classification	2015	LFS started classifying occupation according to SSYK 2012. In 2015, occupation was double coded with SSYK 1996 and SSYK 2012. From 2016, occupation was coded using SSYK 2012 only.
New sector classification	2014	With the December 2014 LFS, sector reporting changed to be based on INSEKT 2014. However, the change does not affect the reporting done in the LFS. Classification is based on the sector of the enterprise.
New estimator	February 2013	With the publication of the January 2013 LFS, estimates were based on a new estimator, whereby the method for

		aggregation of the two samples – the regular sample in the LFS and the supplementary sample – was changed. The new estimator was also used to recalculate results retroactively until the January 2010 LFS, thus replacing the previous aggregation estimator.
The sample design was changed	January 2013	With the rotating sample in 2013, drawing the sample was done through systematic sampling within strata with sorting by country of birth and personal identity number within strata. This change was made to attain a smoother distribution by age and country of birth in the sample.
Improvement in level of educational attainment	2012	New information was introduced to supplement the register information. Register-based supplement for the period 2005–2011. For 2012 and onwards, additional questions were added to the questionnaire.
Expansion of the LFS	January 2010	From January 2010, the LFS reports were based on a larger sample, as a “supplementary sample” was added. The sample was enlarged in order to enable describing in more detail the situation and dynamics of the labour market for the population aged 15–74 years.
A new block of questions regarding labour market policy programmes	2010	Ahead of 2010, several questions were reworked for the purpose of minimising the risk of incorrect classification of the labour force status of sample people. Previously, there was a risk of the sample people included in phase 3 of the activity and development guarantee wrongly considering this activity to be work. The scope of phase 3 was very limited during 2009 but was expected to increase in 2010 because more people had completed the first two phases. Before the change in the questionnaire ahead of 2010, the number of employed people may have been overestimated, and the number of unemployed may have been underestimated, although probably only marginally, as the scope of phase 3 was limited.

Seasonally adjusted and linked data	February 2010	An initial module with seasonally adjusted series was published on 18 February 2010.
New industrial classification	January 2009	<p>A transition from SNI 2002 (based on NACE Rev. 1.1) to SNI 2007 (based on NACE Rev. 2). Because SNI 2007 largely differs from SNI 2002, new study domains for industries were produced for the LFS. For more information on new study domains in the LFS, see the link below.</p> <p>Double coding was carried out in 2008.</p> <p>www.scb.se/Statistik/AM/AM0401/_dokument/Beskrivning_redovisningsgrupper_SNI2007_AKU.pdf</p>
Change in age classification	October 2007	<p>The LFS had previously presented the age group 16–64. Starting with the October 2007 measurement, the LFS began to present the age group 15–74, according to EU regulations. However, the tables present the age group 16–64 years as a sub-group.</p> <p>The change in age distribution, combined with the new definition of unemployment, meant that, as of October 2007, the LFS reports fully in compliance with EU regulations.</p>
New definition of unemployment in accordance with the ILO international definition	October 2007	<p>The Swedish official definition of unemployment was changed, in accordance with EU regulations, to also include full-time students who have sought and been able to work.</p> <p>www.scb.se/statistik/AM/AM0401/_dokument/AKU_tva_matt.pdf</p>
LFS was further EU-adapted in accordance with EU regulations 575/2000 and 1897/2000	2005	Continued EU harmonisation included the implementation of certain changes in definitions (employed, unemployed and underemployed), the introduction of new EU variables (including length of absence), introduction of direct questions about overtime and absence, a change in the order of questions, and integration of the questions in the EU addendum into the regular LFS questions.

		<p>The estimator was also changed, by introducing the GREG estimator for all variables. There was also an overhaul of the basic tables and the supplementary tables.</p> <p>These changes caused a break in the LFS time series. However, retroactive linkages were made for the period 1987 to March 2005.</p>
Revised industrial classification	2003	<p>A revised industrial classification, SNI2002, was introduced. Education, and healthcare and nursing, were affected. The impact was a break in the time series for these industries.</p>
New sector and education classification	2001	<p>A new standard for classification of sector was introduced. A break in the time series arose for the target characteristics "number of employees" and "hours worked by employees" in the central government, municipal and private sectors. In 2000, sectors were coded according to both the old and the new standard.</p> <p>A new standard for the classification of education, SUN 2000, was also introduced. This led to deficiencies in comparability with earlier published results.</p>
The LFS was EU-adapted under European Regulation No 577/98	2001	<p>This meant that the LFS referred to the age group 15–74 and not 16–64 like before, and that data collection for those aged 15–74 years was done throughout the <u>entire</u> year. However, the official Swedish LFS reporting continued to refer to those aged 16–64. A subset of the questions was now also addressed to/concerned members of the respondent's household (rotation group eight).</p>
New estimator and new questions about the length of unemployment period	1999	<p>A new estimator, GREG, was introduced. The main impact of the new estimation process was on the regional estimates, while the effect on the national estimates was negligible. New regional estimates (weights) were produced from 1997 onwards.</p> <p>To correct an inconsistency between the level estimation of the unemployed and period of unemployment, several questions for the unemployed were introduced. This led to a correction of the estimation of the</p>

		number of long-term unemployed and the length of unemployment period. In the past, these target characteristics had been overestimated.
Changed regional breakdown	1997, 1998	The creation of Skåne County and Västra Götaland County caused a change in the regional breakdown.
New occupational classification	1997	LFS started classifying occupation according to SSYK (ISCO 88 COM), and no longer used NYK83. This caused a break in the time series for occupational codes between the years 1996 and 1997.
New industrial classification	1995	A new industrial classification was introduced; SNI 92 replaced SNI 69. In recomputations performed for the 1987–1994 LFS, account was taken of the new industrial classification (SNI 92). For more information, see "Linking a system of time series. Recomputation of the 1987–1992 Labour Force Surveys".
EU-adapted LFS	1995	An EU-adapted LFS was carried out from 1995 to 2000. For 1995–1998, an EU-adapted LFS was only carried out in connection with the survey in April. In 1999 and 2000, it was done in February, March, and April for three rotation groups in each month, and a construed quarter was delivered.
A new system to measure weeks, use of auxiliary information and an amended definition of unemployment	1993	A rolling "system to measure weeks" was introduced, which means that measurements are made during all weeks of the year. The advantage was that the quality of the estimates of "hours worked" and "absence" improved. The definition of unemployment was changed to expand the "job-seeking period" to apply to the last four weeks, and not only the reference week. Statistics Sweden starts using auxiliary information in the estimation process from Statistics Sweden's employment register and the job seeker register of the Swedish Public Employment Service. To take account of these changes, model-based recomputations of LFS for 1987–1992 were produced. For more information, see "Linking a system of time series".

		Recomputation of the 1987–1992 Labour Force Surveys”.
LFS according to the RIDA project was introduced	1987	<p>Changes in content and definitions were introduced. The most important change was that a new variable, degree of attachment to the labour market, was introduced. Other new variables included second job, overtime/additional time, and absence of less than one week. The quality of the term “unemployment” was improved by introducing “willing-able-looked” questions. The data collection procedure was also changed.</p> <p>The changes led to a break in the time series between 1986 and 1987. However, there was double collection of data in 1986, which enabled linking between the years for certain variables. The linkage means that two estimates were produced for 1986 – the original (official) one for retroactive comparison with 1985 and earlier years, and an adjusted estimation for 1986 to be used for comparisons with 1987 and onwards.</p>
	1970	Monthly surveys were introduced.
	1961	Statistics Sweden took over the survey. Following preliminary work to develop the survey, quarterly surveys were conducted in the period 1963–1969.
	1959	The first Swedish labour force survey was conducted by the Swedish Labour Market Board.