



Statistics Sweden

Statistiska centralbyrån

Multi-generation register 2009

A description of contents and quality

2010:3

The series Background facts presents background material for statistics produced by the Department of Population and Welfare Statistics at Statistics Sweden. Product descriptions, methodology reports and various statistic compilations are examples of background material that give an overview and facilitate the use of statistics.

Publications in the series

Background facts on Population and Welfare Statistics

- 2001:1 Hälsoindex
- 2001:2 The role of official statistics in a democratic society: statistics as an investment-free for users
- 2001:3 Co-operations project "Population Statistics"
- 2001:4 Uppdatering av immigrationsuppgifter med anpassning till den nya RTB-strukturen
- 2001:5 Flergenerationsregistret – The Multi-Generation Register
- 2001:6 Utredning om komplettering och utvidgning av Flergenerationsregistret
- 2001:7 Konferens om välfärdsstatistik den 27 mars 2001
- 2002:1 Komplettering av Flergenerationsregistret – resultat från provregistrering av personakter över avlidna 1947 – 1967
- 2002:2 Ett nytt system för Register över totalbefolkningen. Bättre kvalitet och nya möjligheter – A new population register system. Better quality and new possibilities.
- 2002:3 Slutrapport: Översyn av SCB:s Intäkts- och kostandsundersökning för flerbostadshus. Bilaga: Minnesanteckningar från programmet boende. Byggnad och bebyggelse om IKU den 22 maj 2001.
- 2002:4 Befolkningens boende – idé till årlig sammanställning över nationell och internationell boendestatistik
- 2002:5 Översyn av SCB:s Bostads- och Hyresundersökning (BHU)
- 2002:6 Kvalitetssäkringsprogram av postenkätundersökningar. BV/ENK:s kvalitetssäkringsprogram
- 2003:1 Longitudinellt barnregister
- 2003:2 Översyn av HBS (HUT, HBU, Utgiftsbarometern) inför 2003 års undersökning
- 2003:3 Manuell registrering eller skanning
- 2003:4 BV-avdelningens Utvecklingsplan 2003
- 2003:5 Flergenerationsregistret 2002, En beskrivning av innehåll och kvalitet
- 2003:5.1 Multi-Generation Register 2002, A description of contents and quality
- 2003:6 Barns hälsa – Förslag till utbyggnad av SCB:s årliga statistik om Barn och deras familjer
- 2003:7 Översyn av Outhyrda lägenheter i flerbostadshus 2002 - 2003-09-12
- 2003:8 Studie av bortfallet i 2000-års undersökning av levnadsförhållanden (ULF)
- 2003:9 Alternativa datainsamlingsmetoder för ULF
- 2003:10 Slutrapport från projektet för översyn av produktionssystemet för framställning av tabeller till publikationer
- 2003:11 Ensamstående och sammanboende i folkbokföringen, taxeringen och i verkligheten

Continued on inside of the back cover!

These publications and others can be ordered from:
Statistics Sweden, Publication Services, SE 701 89 ÖREBRO, Sweden
phone +46 19 17 68 00 or fax +46 19 17 64 44.

You can also purchase our publications at our Statistics Shop:
Karlavägen 100, Stockholm, Sweden

Background Facts

Multi-generation register 2009

A description of contents and quality

Population and Welfare Statistics 2010:3

**Statistics Sweden
2010**

Background Facts

Population and Welfare Statistics 2010:3

Multi-generation register 2009

A description of contents and quality

Statistics Sweden
2010

Previous publication	Listed at the inside of the cover
Producer	Statistics Sweden, Population and Welfare Department SE-701 89 Örebro
Inquiries	Susanne Dahllöf +46 19 17 62 14 susanne.dahllof@scb.se Anna Engström +46 19 17 67 48 anna.engstrom@scb.se

It is permitted to copy and reproduce the contents in this publication.

When quoting, please state the source as follows:

Source: Statistics Sweden, Background Facts, Population and Welfare Statistics 2010:3, *Multi-generation register 2009. A description of contents and quality*

ISSN 1654-4331 (online)

URN:NBN:SE:SCB-2010-BE96BR1003_pdf (pdf)

This publication is only available in electronic form on www.scb.se.

Foreword

This edition of Background Facts presents the Multi-Generation Register 2009. This register is of great importance for medical research.

Statistics Sweden September 2010

Stina Andersson

Margareta Eriksson

Contents

Foreword.....	3
1 Summary	9
2 Objectives and background.....	11
3 Areas of application	15
4 Development of the Multi-Generation Register	17
4.1 Personal records	17
4.2 Statistics Sweden's registers	18
5 Production of the Multi-Generation Register	19
5.1 Production from the TPR system	19
5.1.1 Collection of index persons	19
5.1.2 Identification of biological father and mother	19
5.1.3 Adoptions	19
5.2 Supplements from other sources	19
6 Results from Multi-Generation Register 2009	23
6.1 Biological relationships	23
6.1.1 Deceased persons.....	25
6.1.2 Results of supplementary work.....	26
6.2 Adoptions	27
7 Contents.....	29
7.1 Statistical measures.....	29
7.1.1 Objects and population.....	29
7.1.2 Variables.....	30
8 Reliability	33
8.1 Unreliable sources	33
8.1.1 Coverage	33
8.1.2 Processing	33
8.1.3 Regulations	33
9 Timeliness.....	37
9.1 Frequency	37
9.2 Production time.....	37
9.3 Punctuality	37
10 Comparability and coherence.....	39
10.1 Comparability over time	39
10.2 Coherence with other statistics	39
10.2.1 Population & Housing Census parents	39
11 Availability and clarity.....	45
11.1 Documentation	45
11.2 Confidentiality and rules for handling personal information.....	46
11.2.1 The Public Access to Information and Secrecy Act	46
11.2.2 Personal Data Act	46
11.2.3 Longitudinal databases – key databases	47
11.3 Inquiries.....	47

Appendix 1 Tables showing index persons and biological parents	49
Multi-Generation Register version 2009-12-31	49
Table 1 Number of index persons, by birth year, information on mother and father and on country of birth.....	50
Table 2 Number of index persons born in Sweden, by birth year and information on mother and father	52
Table 3 Number of foreign-born index persons, by birth year and information on mother and father	54
Table 4A Amount of data on index persons born in Sweden, by birth year and source for own country of birth	56
Table 4B Amount of data on index persons born in Sweden, by birth year and source for parents' country of birth.....	58
Table 4C Amount of data on index persons born in Sweden, by birth number and source for mother's registration number and birth date.....	60
Table 4D Amount of data on index persons born in Sweden, by birth number and source for father's registration number and birth date	62
Table 5A Amount of data on foreign-born index persons, by birth year and source for own country of birth	64
Table 5B Amount of data on foreign-born index persons, by birth year and source for parent's country of birth.....	66
Table 5C Amount of data on foreign-born index persons, by birth year and source for mother's registration number and birth date	68
Table 5D Amount of data on foreign-born index persons, by birth year and source for father's registration number and birth date	70
Table 6 Number of registration number thought to be re-used, by birth year of index person	72
Table 7 Average number of children per mother, by birth cohort and country of birth.....	74
Table 8 Average number of children per father, by birth cohort and country of birth.....	77
Table 9 Number of index persons where Population and Housing Census mother and grandmothers are in agreement, broken down by Population and Housing Census year and age group	80
Table 10 Number of index persons where Population and Housing Census father and grandfathers are in agreement, broken down by Population and Housing Census year and age group	81
Table 11 Number and share of deceased index persons born in Sweden, by birth year and year of death with information on parents	82
Table 12 Number of data for deceased index persons born in Sweden, by variables and source	84
Table 13A Number and share of deceased index persons born in Sweden, with information on mother, by year of death and source	85
Table 13B Number and share of deceased index persons born in Sweden, with information on father, by year of death and source.....	86

Table 14 Number of index persons by number of ancestors in previous generations.....	87
Table 15A Number of index persons by number of siblings and year of birth.....	88
Table 15B Number of index persons by number of siblings and year of birth, percent.....	88
Appendix 2 Tables showing adopted index persons and adoptive parents.....	89
Multi-Generation Register version 2009-12-31	89
Table 16 Number and share of adopted index persons, by year of birth and country of birth.....	90
Table 17 Number and share of adopted index persons born in Sweden, by year of birth, information on adoptive mother and father and adoption date.....	92
Table 18 Number and share of adopted foreign-born index persons, by year of birth, information on adoptive mother and father and adoption date	94
Appendix 3 Personal records.....	97

1 Summary

The Multi-Generation register is a register made up of persons who have been registered in Sweden at some time since 1961 and those who were born in 1932 or later. These are called index persons. The register contains connections between index persons and their biological parents. There are about 10 million index persons in the register. For index persons who were adopted, there is also information on their adoptive parents. There are about 150 000 index persons with information on adoptive mother and/or adoptive father.

The Multi-Generation Register is a part of the register system for Total Population Register, where information comes from the National Tax Board. From the 2002 version onwards, information is also collected for certain index persons from older national registration material. This older material consists of personal records concerning persons who died 1947–1967, and Statistics Sweden's register of births 1961–1967. Every year, a new version of the register is created, including new index persons who immigrated or were born during the year.

Information from the Multi-Generation Register can be requested for research and statistical purposes.

2 Objectives and background

The Multi-Generation Register is today made up of persons who have been registered in Sweden at some time since 1961 and those who were born in 1932 or later. These are called index persons. The Register contains information on index persons and their biological parents. For index persons who were adopted, there is also information on their adoptive parents.

The Multi-Generation Register is a part of the register system for the Total Population Register. The data comes from the national registration records kept by the National Tax Board. From the 2002 Multi-Generation version onwards, data on biological parents has even been taken for certain index persons from older national registration material and Statistics Sweden's register of births.

A new version of the register is put together in March every year. The first version of the Multi-Generation Register was produced in March 2000 to replace what was known as the Second Generation Register, kept by Statistics Sweden from 1994 to 1999.

Some changes and events in national registration, among other things, which have had an effect on the production of the register are briefly described below.

Year							
1947	1961	1968	1991	1997/98	2000	2002	2004 2006
Personal reg. no.		TPR	New organisation for national registration	Base retrieval/ New TPR	Suppl. basic sample	Develop. 2002-2004	Reused PIN handled differently

1947:

Civic registration numbers were introduced at the same time as personal records were established for all persons who were registered in a parish register in Sweden in 1947. If a person was 15 or younger in 1947, their parents were recorded in their personal record. This means that parental information mainly exists for those persons born in 1932 or later.

The work to establish personal records for all the persons who were registered in 1947 was carried out during 1947 and 1948. This means that parental information can be missing for index persons born in 1932 or 1933, because these persons were over 15 when their personal records were established.

Between 1947 and 30 June 1991, personal records have been established for all persons born in Sweden or who had immigrated to Sweden.

1961:

To be included in the Multi-Generation Register, index persons must have been registered at some time since 1961. 1961 is the starting point because, before this year, there was essentially no population register in ADP (automatic data processing) format.

1968:

At the same time as sections of the national register were computerised in 1967, Statistics Sweden established a register for the nationally registered population in Sweden. The register was called the Total Population Register (TPR). In 1969, Statistics Sweden put together a TPR for the first time with the reference date of 31 December 1968. The TPR was thereafter updated with amendment reports (notifications) received from the national register. These notifications were based on reports from the parish civil registration office, which acted as the local authority for the national register.

In the computerised national register, information on biological or adoptive parents was not included.

1991:

A restructuring of the national register was carried out on 1 July 1991. The restructuring meant that national registration at local level was moved from the parish office to the local tax office.

In conjunction with this restructuring, the National Tax Board computerised all personal records for persons who were registered on 30 June 1991. Personal records for persons deceased between 1947 to 30 June 1991 were not computerised. For persons who had emigrated during this time period, the National Tax Board computerised the personal records for those persons born in 1920 or later.

The restructuring also involved an entirely new ADP system for national registration. The new system, comprising of registration and storage of data, included a certain amount of new information, for example data on parents and children.

1997/1998:

Also in conjunction with the restructuring of the national register in 1991, a new notification system, with partly new contents, came into operation at the National Tax Board. On 1 November 1997, Statistics Sweden made a base retrieval from the national register of the National Tax Board which consisted of all the persons registered in Sweden at that time. This base retrieval then formed the basis for the new notification system. The changes in notification routines required a total reorganisation of the TPR system. The new TPR system came into operation at the end of 1997 / beginning of 1998. For more information, see Background facts in population and welfare statistics 2002:2 A new system for the Total Population Register - More possibilities and better quality.

2000:

To make up for the shortfalls in the data on family relations, which were not included in the original base retrieval from 1997, a special supplementary data retrieval was done at the beginning of 2000. The retrieval

concerned data on the biological parents of persons who were either deceased or had emigrated. In addition, a child's relationship to a person other than the parent or guardian was also included. After a government decision, information regarding adoptions and cancelled adoptions with links between the child and adoptive parent were also included.

2002:

A study was already carried out in 2001 which looked at the development of the Multi-Generation Register. During the first half of 2002, different tests were done to identify the best procedure for the supplementary work. During the second half of the year, all personal records for persons born from 1932 to 1967, who died during the period from 1947 to 1967, began to be computerised and registered on microfiche. This data is used to supplement the variables for which information is missing in the existing Multi-Generation Register. It was also investigated during 2002 whether Statistics Sweden's registers could be used in this supplementary work.

2003:

In March 2003, a new version of the Multi-Generation Register was produced, containing supplementary data from the hitherto computerised personal records and data from Statistics Sweden's register of births. See Background facts on Population and Welfare Statistics 2003:5 – Multi-Generation Register 2002 - A description of contents and quality.

2004:

This year's version contained information from several registered personal records. See Background facts on Population and Welfare Statistics 2004:5 – Multi-Generation Register 2003 - A description of contents and quality.

2005:

The supplementary work on registered personal records was completed. See Background facts on Population and Welfare Statistics 2005:2 – Multi-Generation Register 2004 – A description of contents and quality.

2006:

From July 1st assisted reproduction with donated sperms are allowed for women who have registered their partnership or are cohabitating with another woman. The partner and the pregnant woman are both considered parents to the child. The personal identity number on mother in the Multigenerationregister refers to the identity of the woman who gave birth to the child. The other woman and the man who donated the sperms are not registered in the Multigenerationregister.

See Background facts on Population and Welfare Statistics 2006:5 " – Multi-Generation Register 2005 – A description of contents and quality".

2007:

Data was earlier deleted on persons with re-used registration number. In this years version, the number of re-used registration numbers have increased and data on parents is no longer deleted. It is up to the researcher to decide how to handle re-used numbers.

3 Areas of application

The link between children and biological parents can be used for various purposes, such as medical studies in which the kinship between different individuals plays a crucial role. Information on adoption can be used in various types of social research. There are routines to identify the relationship of persons to the index person, e.g. parents, siblings (full or half), children and cousins. After relatives have been identified, information on the individuals can be taken from different registers at Statistics Sweden or another authority.

4 Development of the Multi-Generation Register

The development of the Multi-Generation Register is of great importance for medical research. The register is already unique in the world and it is possible to develop it further from the national register's source material.

Since 1999, there has been an ongoing discussion with the Karolinska Institute about the possibilities to make additions and expand the Multi-Generation Register. Additions relate to supplementary information on variables for which information is missing in the existing register. Expansion of the register would mean that the current register population would be increased with further index persons born before 1932 or registered before 1961.

During 2002, work started with adding supplementary data to the register. It is most relevant to add first the registration numbers of biological parents, but even the variable country of birth for both parents and index persons will be added wherever possible.

The work to add supplementary data has been concentrated on those index persons who died before 1 July 1991. This delimitation has been set because all the personal records of persons registered up to 30 June 1991 were computerised when national registration was moved from the parish offices to the National Tax Board. Furthermore, personal records for persons born in 1920 or later who emigrated between 1947 and 30 June 1991 are also computerised. This means that parental information is missing for a large number of index persons who died between 1961 and 30 June 1991, because the records of the deceased persons would not have been computerised.

In order to be able to link index persons and their parents, the following sources are used:

- Personal records
- Statistics Sweden's register of births

The development of the Multi-Generation Register involved a long period of extensive work. Scanning and data registration work of personal records was completed on 31 December 2004. In conjunction with the creation in March 2005 of the Multi-Generation Register 2004, the supplementary work with the register was completed.

4.1 Personal records

Before 1 July 1991, personal records with information on population were kept in the national registration system at the parish office (see appendix 3). Among other things, personal records include links between children and parents. Personal records were established for all persons who were registered in Sweden in 1947. After 1947, a personal record was established for every person who was born or who immigrated up to 30 June 1991. The transfer of national registration material to Sweden's nine regional archive offices is currently underway. So that personal records can be used, it is

necessary that the material is transferred to microfiche or digitalised. Transferral to microfiche/scanning is being carried out at the same time as the move. It is estimated that all parish books will be delivered to the regional archives by 2015. Exception is made for personal records of persons deceased before 1968. These personal records have already been delivered to the respective regional archive.

The supplementary work via personal records has been directed towards those persons who died 1961-1967 and who were born during the period 1932-1967. In addition to those relationships between deceased index persons and their parents, relationships have also been identified between the deceased persons and their children. This means that even information on the children of deceased persons is supplemented, in those cases where information on biological parents has been missing in the Multi-Generation Register.

Personal records for persons deceased between 1947 and 1960 have also been computerised. These persons are not included in the population of the Multi-Generation Register but there can be information in their personal records which can be linked to an index person already existing in the register. Data from personal records for persons deceased between 1947 and 1960 are saved for use in an eventual expansion of the population.

Transferral to microfiche/scanning and computer registration of personal records has been carried out by the research centre SVAR (Swedish Archive Information) in Ramsele, Sweden. The work began during 2002 and continued until 31 December 2004. In conjunction with the creation in March 2005 of the Multi-Generation Register 2005, the supplementary work with the register was completed.

When the computerised material was delivered to Statistics Sweden, logical controls were made and adapted via a regulation system. For a more detailed description of the regulation system, see section 8.1.3 "Regulations".

For more information on scanning and computer registration of personal records, see Background facts on population and welfare statistics 2005 "Data capture of personal records for supplementing the Multi-Generation Register".

4.2 Statistics Sweden's registers

Statistics Sweden's register on births has been used in the supplementary work. The register includes information on the parents of persons born during the period 1961 to 1997. The supplementary work has above all included those index persons who died 1968-1991, born 1961-1991.

In nearly all cases, there is information on the biological mother and, when the mother is married at the time of the child's birth, even information on the husband if, at the time of birth, he is understood to be the father.

The supplementary work from Statistics Sweden's register of births was carried out when the Multi-Generation Register 2002 was created.

Statistics Sweden's register on births has undergone logical controls and has been adapted via a regulation system. For a more detailed description of the regulation system, see section 8.1.3 "Regulations".

5 Production of the Multi-Generation Register

5.1 Production from the TPR system

The Multi-Generation Register is produced anew from the TPR system once a year.

5.1.1 Collection of index persons

The index persons and their country of birth are taken from three different sections of the TPR system: Registered persons, Deceased persons and Emigrated persons. The section Registered persons consists of all the nationally registered persons in Sweden. Persons appearing in both the Registered persons and Deceased persons sections are counted as living persons. Persons appearing in both the Registered persons and in the Emigrated persons sections are taken out. Persons who appear in both the Deceased persons section and in the Emigrated persons section are also taken out.

Persons with an incorrect date of birth or a registration number which is wrong in some other way are taken out.

5.1.2 Identification of biological father and mother

The biological mother and father of index persons are taken from the TPR system, which identifies the relationship between mother and child and between father and child.

At the same time as the Multi-Generation Register is created from the TPR system, logical controls and adjustments according to a regulation system are carried out. For a more detailed description of the regulation system, see section 8.1.3 "Regulations".

5.1.3 Adoptions

Information on adoptive mother and father is taken from the TPR. Persons with conflicting relationships are taken out. For foreign-born persons, information on immigration is retrieved and can be used to estimate adoption year if this is missing up to 1991. Adoptions for around 170 persons have resulted in the person being adopted by a second adoptive mother and/or adoptive father. These terminated adoptions are put in a separate register.

5.2 Supplements from other sources

Information from the TPR system on index persons and their parents is collected in a register called RTBBioforaldrar. Information from personal records on persons and their relationships are found in a register called. PAKT Bioforaldrar. Regarding Statistics Sweden's register of births, relationships are recorded in a register called FoddaBioforaldrar.

All three registers undergo logical controls so that they are all structured in the same way. This has resulted in three different registers with an identical presentation of variables and identical regulations for the creation of variables. For a more detailed description of the regulation system, see section 8.1.3 "Regulations".

The three registers include registration number changes which have been reported up to 31 January 2010.

The next step in the production is to combine the above mentioned three registers to one new Multi-Generation Register, which includes supplementary data from both the personal records and the Statistics Sweden register of births. Together with this, a fixed priority order is used to choose which sources should be applied.

The sources are prioritised in the following order:

- 1) Total Population Register
- 2) Personal records
- 3) Statistics Sweden's register of births

Data is taken from the sources in this priority order when producing the Multi-Generation Register. The data is only taken from a lower priority source if it is missing in the higher priority source.

The TPR is the determining information source because the data comes from the national register of the National Tax Board. Data from the TPR has the highest priority. For example, the TPR could have data on the date of birth of an index person's mother but the mother's registration number could be missing. If the personal records or the Statistics Sweden register of births contain the mother's registration number but have a different date of birth from that in the TPR, this registration number is not used in the Multi-Generation Register. In this case, no additional data can be added from the personal records or the register of births.

A special source code has been developed to identify which source the data has come from. The source code is shown for the following variables: index person's country of birth, biological parents' registration numbers and date of birth, and biological parents' countries of birth.

For country of birth, another source is also used, the Population and Housing Census. As a last resort, the country of birth is taken from the 1960 and 1970 Population and Housing Census for those index persons and parents for which data on country of birth is still missing after additions have been made from the personal records and register of births.

A simplified flow chart showing the production of the new version is shown in figure 1.

After the collection of information on adoptions from the TPR, another some 290 adopted index persons have been added from the registered personal records. In addition, information on adoptive mother and adoptive father from the personal records has also been supplemented for persons who have already been adopted according to the TPR.

A simplified flow chart showing the production of the new version of register for adopted persons is shown in figure 2.

Figure 1
Simplified flow of how the Multi-Generation Register, BioForaldrar is produced

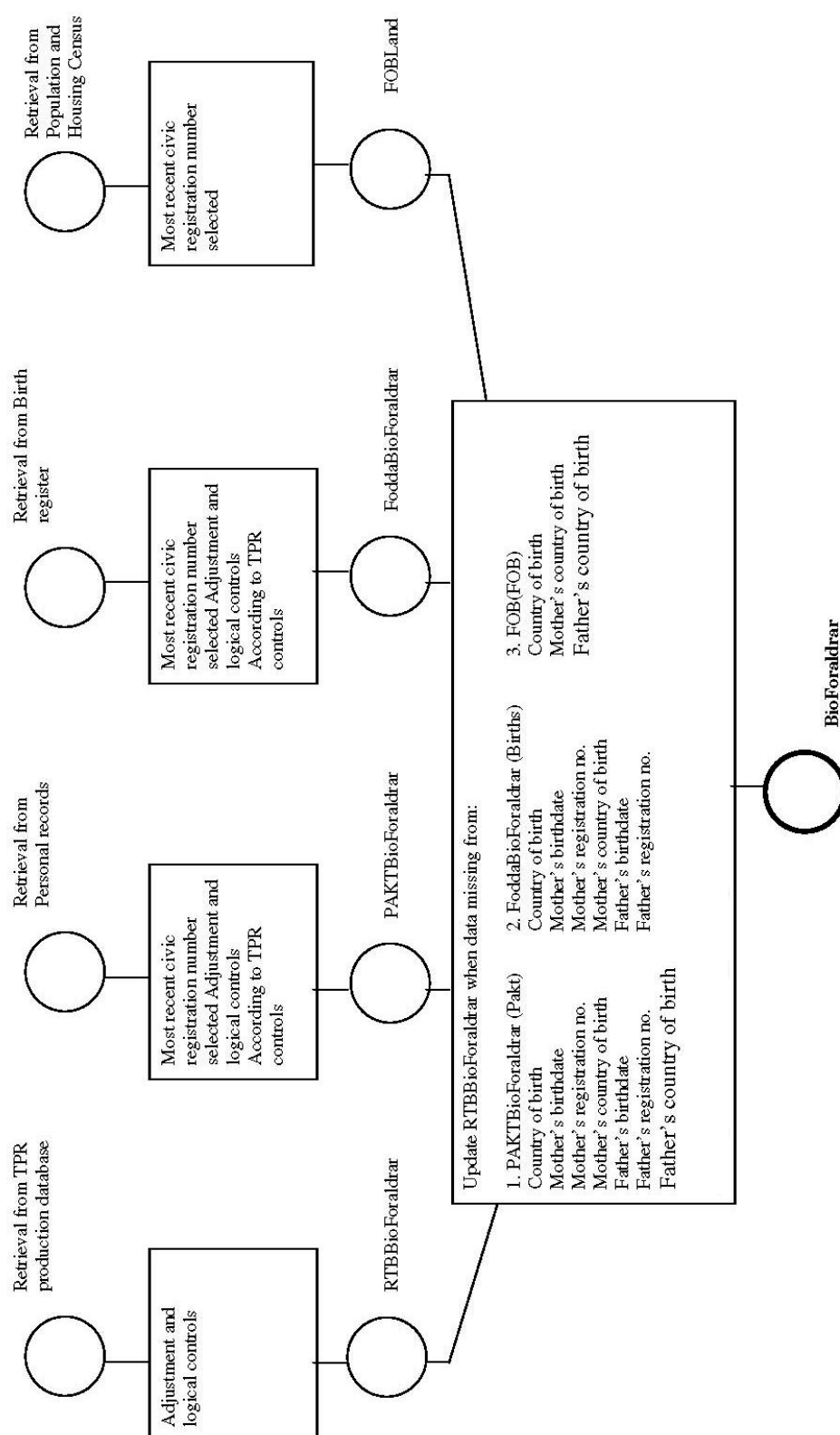
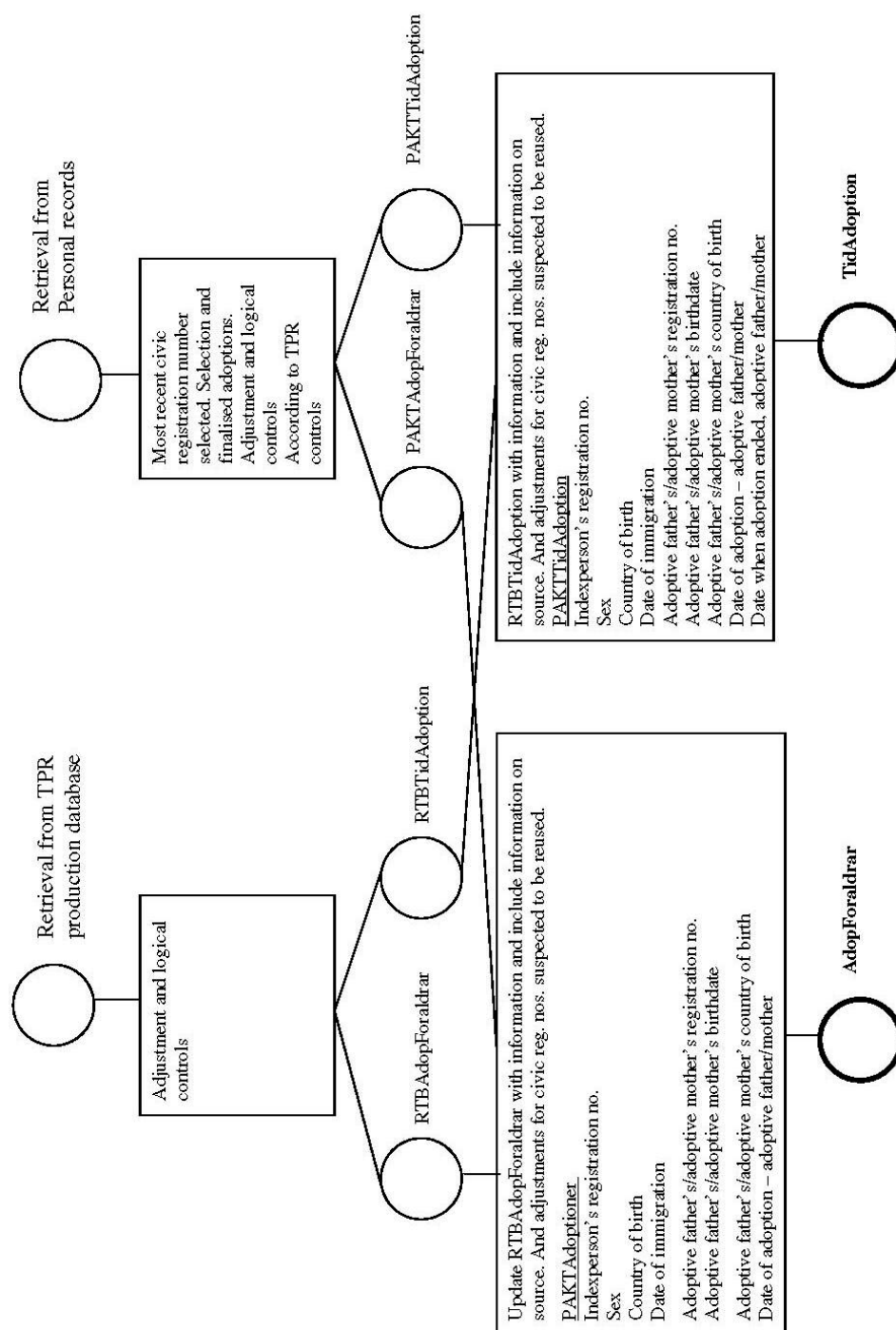


Figure2
Simplified flow of how the Multi-Generation Register, AdopForaldrar is produced

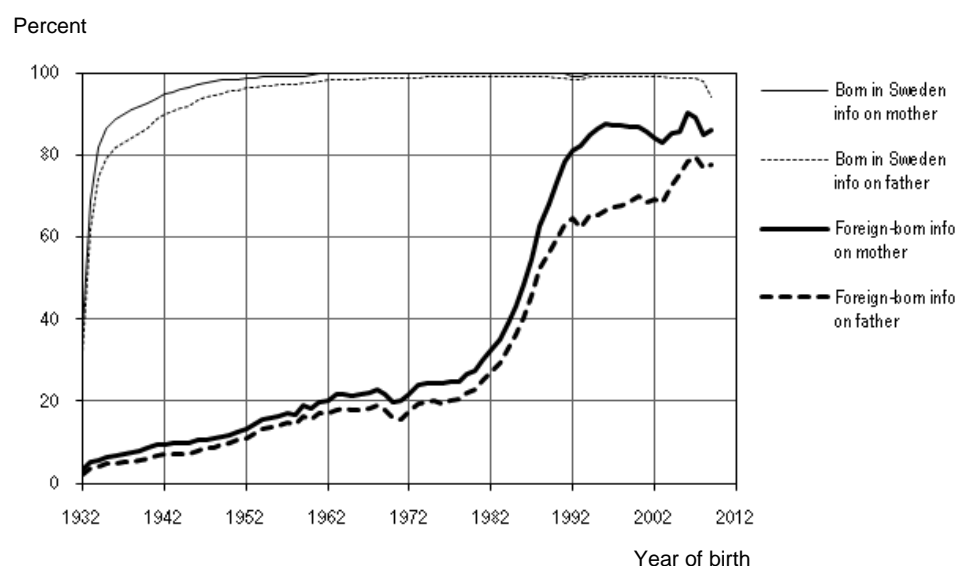


6 Results from Multi-Generation Register 2009

6.1 Biological relationships

The number of index persons with information on their parents' registration numbers differs among persons born in Sweden and foreign-born persons.

Graph 1
Share of index persons with data on parents



The number of index persons with information on their parents' registration numbers also differs among different subpopulations (see table 1).

Table 1
Share of index persons with registration number for mother and father

Index persons	Share with registration number for mother (percent)	Share with registration number for father (percent)
Born in Sweden	98	95
Born in Sweden in 1950 or later	100	98
Foreign-born	27	22
Born in Sweden, deceased 1961–2009	82	73
Foreign-born, deceased 1961–2009	17	13
All	84	82

Whether data on parents is available for foreign-born index persons depends on the age at which the person came to Sweden, and if they came alone or together with their parents.

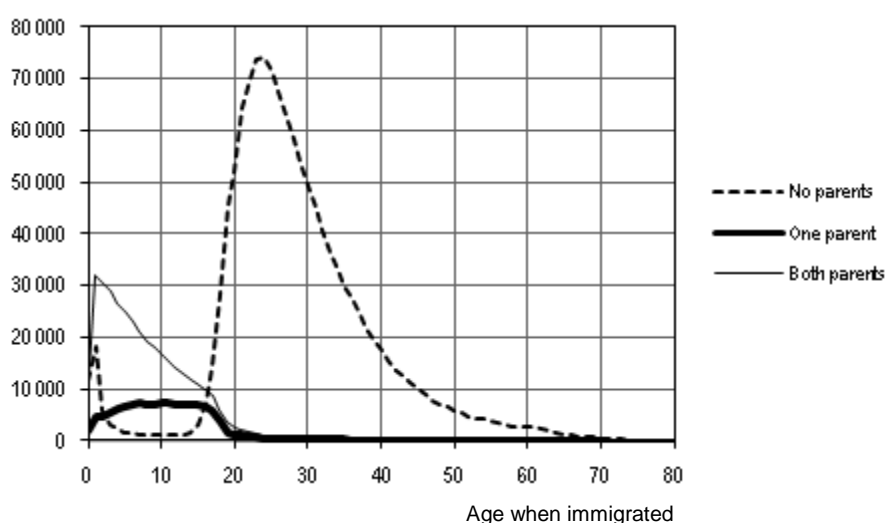
Information on parents for foreign-born persons is missing if they were older than 18 when they immigrated. Info on biological parents in the Multi-Generation Register is often missing for children adopted from other countries since they immigrate to Sweden without their biological parents. In this year's version, adopted persons make up 11 percent of foreign-born persons in 2000, and for those born in 2009, 13 percent of all immigrated children are adopted.

In graph 2, the link between age when immigrated and the existence of data on parents is illustrated.

Graph 2

Number of index persons with data on 0, 1 or 2 parents, by age when immigrated

Number



In table 2 (below) is a presentation of for how many generations indexpersons can be followed. 16 percent of the indexpersons have no information on previous generations because they have no information on parents in the Multigenerationsregister. 36 percent of the indexpersons have information on at least one parent but no information on grandparents. 58 indexpersons have information on at least one person in each generation, for five more generations. Those 58 indexpersons are born since 2006 which means that it will take some time before the Multigenerationregister will include yet another generation. For more information, see Appendix 1.

Table 2

Number of generations per indexperson

Number of generations	Indexpersons	
	Number	Share
0	1 583 811	16
1	3 597 543	36
2	2 859 672	28
3	1 948 338	19
4	143 103	1
5	58	0
Total	10 132 525	100

6.1.1 Deceased persons

The supplementary work for the Multi-Generation Register has concentrated on deceased index persons. These deceased index persons make an interesting group from a research point-of-view.

Graph 3A shows how the share of deceased index persons with information on parents has increased as a result of the supplementary work carried out from the personal records and Statistics Sweden's register of births. The supplementary work has been divided into the following two parts.

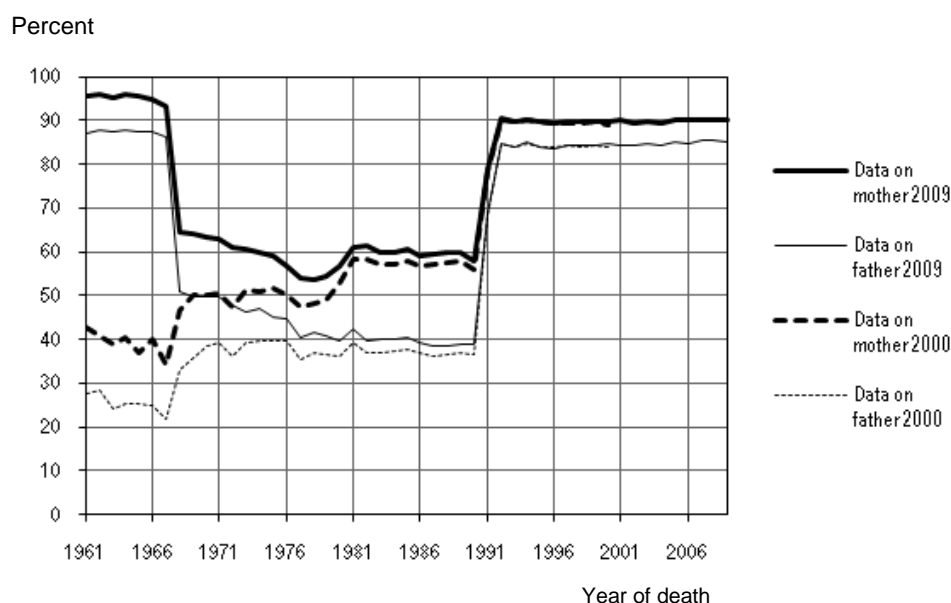
- 1) Addition of index persons born from 1961 to 1991, who died from 1968 to 1991. Source: Statistics Sweden's register of births
- 2) Addition of index persons born from 1932 to 1967, who died from 1961 to 1967. Source: Personal records

At the same time as the 2002 Multi-Generation Register was created, supplementary work, part 1 was carried out. For the population described in part 2, the supplementary work from personal records was completed when the Multi-Generation Register was created in March 2005.

Graph 3A reports the share of deceased index persons, born in Sweden, with information on parents before and after additions from personal records and Statistics Sweden's register of births.

Graph 3A

Deceased persons 1961-2009, born in Sweden. Share with information on parents, before and after additions



In graph 3A, it is clearly shown that the number of index persons with information on parents increases for those who have died after 1991. This is because the national registration system was restructured on 1 July 1991, and, at the same time, all personal records for those registered by 1 July 1991 were computerised. For those index persons who died in 1980 or later, certain basic data was taken when the National Tax Board carried out its basic data input at the same time as the restructuring of the national register. This explains why there is a larger number of index persons with information on parents who died in 1980 or later.

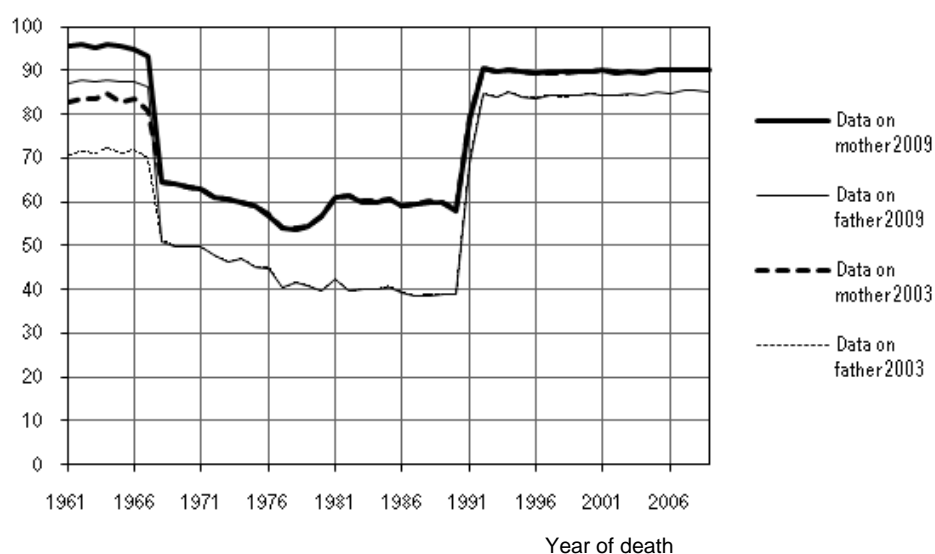
Tables 13A and 13B in appendix 1 show the results of the additions from personal records and Statistics Sweden's register of births for index persons who died between 1961 and 2009.

Compared to the Multi-Generation Register 2003, the share of deceased index persons with data on parents has increased for those who died between 1961 and 1967 (see graph 3B). This is as a result of additions made from the personal records.

Graph 3B

Deceased persons 1961-2009, born in Sweden. Share with information on parents 2009 version compared to 2003 version

Percent



For index persons for which information on parents is missing, it is possible to take data from the Population and Housing Census on what is called Population & Housing Census parents. It should be noted that the biological relationships between children and parents in the Population and Housing Census are not guaranteed. For more information on Population & Housing Census parents, see section 10.2.1 "Population & Housing Census parents".

6. 1.2 Results of supplementary work

In total, slightly less than 80 000 personal records have been used in the supplementary work for this version of the Multi-Generation Register.

Table 2 shows the number of details, divided by respective source. In total, the Multi-Generation Register contains slightly over 10 million index persons.

Table 3
Number of details by source

Variables	Source				
	TPR	Pakt	Births	PHC	Details missing
Country of birth-index person	10 006 307	12 024	9 768	1 194	103 232
Country of birth-father	8 068 967	4 999	11	7 347	2 051 201
Country of birth-mother	8 393 474	3 898	637	4 240	1 730 276
Date of birth-father	8 398 390	17 925	10 815	.	1 705 395
Date of birth-mother	8 541 937	15 109	11 897	.	1 563 582
Registration number-father	8 180 315	16 928	12 333	.	1 922 949
Registration number-mother	8 461 331	14 724	12 277	.	1 644 193
Total	60 050 721	85 607	57 738	12 781	10 720 828

Information from personal records has generated around 85 000 new details. Slightly more than 57 000 details taken from Statistics Sweden's register of births have been used. Additions to the register from Statistics Sweden's register of births mainly concern index persons who died between 1968 and 1991, and were born between 1961 and 1991.

About 13 000 details on country of birth have been taken from the Population & Housing Census.

In total, about 39 000 index persons have been updated with information on mother's and/or father's registration number through additions from the personal records and Statistics Sweden's register of births. Of these, about 20 000 index persons have been updated with information on registration numbers of one or both parents from the personal records. The corresponding figure for those index persons who have been updated with registration numbers of one or both parents from Statistics Sweden's register of births is about 19 000.

Statistics are shown below on how the information in the Multi-Generation Register 2009 is broken down for index persons.

Number of index persons with all information	7 974 666
of which – all information taken from TPR	7 920 991
– all information taken from personal records	96
Number of index persons missing some information	68 524

Because Statistics Sweden's register of births does not include information on father's country of birth, there are no index persons who have all their information taken from this register.

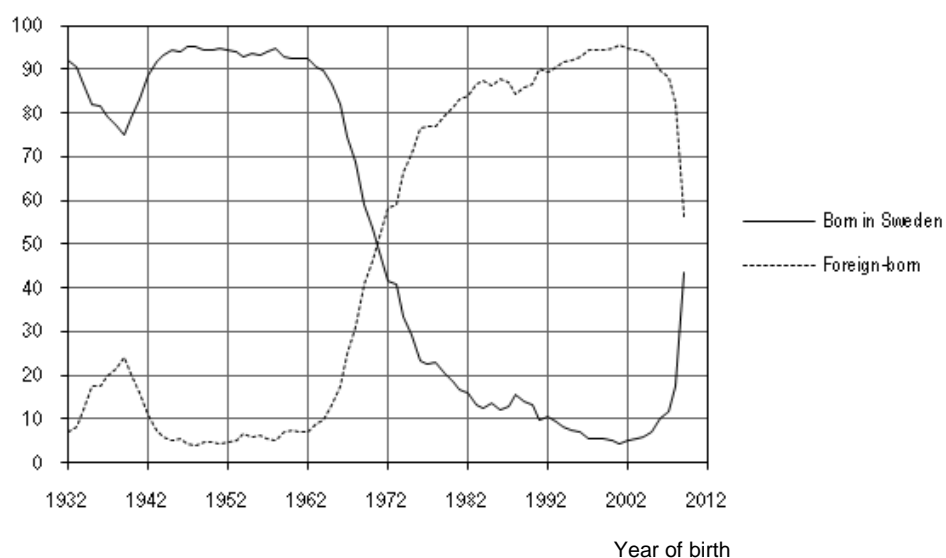
6.2 Adoptions

In this case, "adopted" relates to persons with at least one adoptive parent.

There are slightly over 150 000 adopted index persons. Of these adopted index persons, slightly over 61 percent were born in Sweden. From 1971 onwards, foreign-born index persons are a majority among adopted persons.

Graph 4**Number of adopted index persons, by country of birth and year of birth**

Percent



Information on the time of the adoption is available from 1991 onwards. For foreign-born persons, the year of adoption can be estimated with the help of information on the first year of immigration.

In Appendix 2, Tables 16–18, there is information on adopted persons and adoptive parents.

7 Contents

7.1 Statistical measures

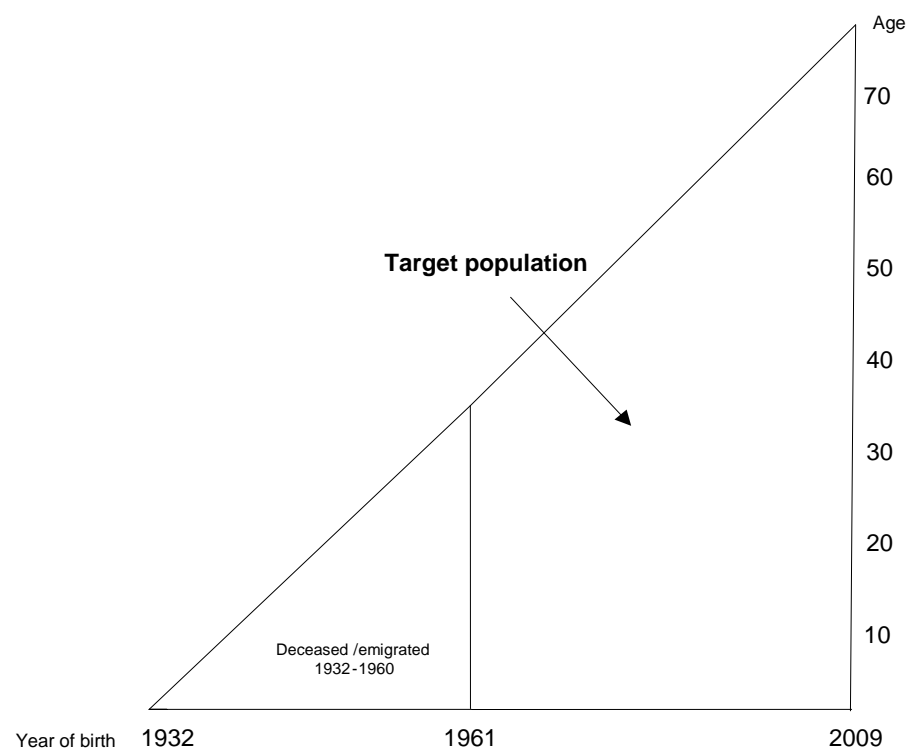
7.1.1 Objects and population

To be included in the Multi-Generation Register 2009, index persons must be born between 1 January 1932 and 31 December 2009. In addition, index persons must have been registered in Sweden at some point between 1 January 1961 and 31 December 2009. These index persons make up the target population.

There are slightly over 10 million index persons in the Multi-Generation Register. Those with information on adoptive mother and/or adoptive father amount to slightly over 150 000.

Graph 5 illustrates the population of the Multi-Generation Register in the form of a Lexis diagram. Lexis diagrams are used to illustrate the link between age and year of birth.

Graph 5
Target population in the Multi-Generation Register



7.1.2 Variables

The Multi-Generation Register contains the following variables:

- Registration number of index person
- Sex of index person
- Country of birth of index person
- Registration number of biological father
- Date of birth of biological father
- Country of birth of biological father
- Registration number of biological mother
- Date of birth of biological mother
- Country of birth of biological mother
- Source code of country of birth of index person
- Source code of registration number of biological father
- Source code of date of birth of biological father
- Source code of country of birth of biological father
- Source code of registration number of biological mother
- Source code of date of birth of biological mother
- Source code of country of birth of biological mother
- Child's position in mother's family
- Number of child's position in father's family
- Number of children – mother
- Number of children – father
- Registration number of adoptive father
- Date of birth of adoptive father
- Name of country of birth of adoptive father
- Registration number of adoptive mother
- Date of birth of adoptive mother
- Name of country of birth of adoptive mother
- Date of immigration
- Date of adoption – adoptive father
- Date when adoption ended – adoptive father
- Date of adoption – adoptive mother
- Date when adoption ended – adoptive mother
- Source code adopted index persons' civic registration number
- Source code adopted index persons' name of country of birth
- Source code adoptive father's civic registration number
- Source code adoptive father's date of birth
- Source code adoptive father's name of country of birth
- Source code adoptive mother's civic registration number
- Source code adopted mother's date of birth
- Source code adoptive mother's name of country of birth

- Source code date of immigration
- Source code date of adoption – adoptive father
- Source code date when adoption ended – adoptive father
- Source code date of adoption – adoptive mother
- Source code date when adoption ended – adoptive father
- Mark for re-used registration number – index person
- Mark for re-used registration number – biological father
- Mark for re-used registration number – biological mother

A **registration number** is a uniform indication of identity for physical persons. The registration number in its current form was introduced in 1967 but a system with date of birth and a three-digit birth number had been used since 1947. The control digit, which was introduced in 1967, is calculated automatically from the date of birth (six digits) and a birth number (three digits) plus a fourth digit added to the birth number (control digit). The control digit is calculated using the "modulus-10" method.

For the information on a parent's registration number to appear, the parent must have been registered at some point since 1947 onwards when registration numbers were introduced.

Sex can be seen from the third digit in the birth number included as part of the registration number.

Date of birth is made up of year, month and day. For parents, date of birth information can exist without a complete registration number. For example, parents who were never registered in Sweden have date of birth information. Parents who have been registered in Sweden can also only have date of birth information, for example if the parents died or emigrated before 1947. There are also cases in which the four last digits are not correct in the registration number but the date of birth can still be established.

Country of birth shows the country of birth's name and refers to the situation at the time of birth. Until 1947, all persons born abroad were counted as foreign-born. Since 1947, children born abroad are not registered as foreign-born if their mother is registered in Sweden at the time of birth.

Children born in Sweden with an unregistered mother (a refugee) can have Sweden as the country of birth. This applied up to 1997.

Paternity is established in the national register in the following way: If the mother is married or recently widowed at the time of the child's birth, the husband is seen to be the father of the child. In other cases, paternity is normally established by acknowledgement or, in certain cases, by a court and is then reported later, not at the time of birth.

A **source code** indicates whether the data is taken from the TPR, personal records or Statistics Sweden's register of births. For the index person's or parents' country of birth, the data can even have the Housing & Population Census as source code.

The **child's position in family** shows the child's ordinal position among biological children in the register for the biological mother and father. The variable is derived.

For index persons with parents born in Sweden in 1915 or later, information on the position in the family is of a good standard, i.e. as long as all siblings in the family are included as index persons in the register. It should be taken into account that all siblings who have not been registered from 1961 onwards are missing completely and that for siblings who have died between 1961 and 1997, information on parents is missing. With the supplementary work to add index persons who died between 1961 and 1967, information on parents will exist for more persons. If the parents were born before 1910, the Multi-Generation Register should not be used to derive siblings.

For index persons with foreign-born parents, the position in the family is of a worse standard. Index persons who immigrated as adults are missing information on the relationship with parents and position in the family. Index persons who immigrated before they were 18 or who were born in Sweden often have information on parents and position in the family. This means that information on siblings can be derived. In this case, the register only includes siblings who were registered from 1961 onwards in Sweden and who, at the time of immigration, were younger than 18 or who were born in Sweden.

When using the child's position in the family or deriving siblings for index persons with foreign-born parents, it should always be taken into consideration that the material being used has larger possibilities for error than material relating to index persons with Swedish-born parents. If parents are under 20 years when they immigrate, the data should have a high level of accuracy.

Number of children refers to the number of biological children in the Register for mother and father. The variable is derived. For more information, see the comments relating to the variable "Child's position in family".

Date of immigration relates to the date when foreign-born adopted index persons immigrated to Sweden.

Date when adoption began and possibly ended for adoptive mother and adoptive father is mainly from 1991 onwards.

Mark for re-used registration number is provided for those registration numbers which are suspected to be re-used. For a more detailed explanation, see section 8.1.3 "Regulations".

8 Reliability

8.1 Unreliable sources

8.1.1 Coverage

In terms of index persons, the Multi-Generation Register covers, for the most part, all persons who have been registered since 1968. For those who were only registered between 1961 and 1967, coverage is good but not as comprehensive. A lesser number of persons, around 2 800, of those who emigrated between 1961 and 1967 and who did not return are missing in the register.

8.1.2 Processing

The data in the Multi-Generation Register comes from three sources: the TPR, personal records and Statistics Sweden's register of births.

TPR: Data registration is carried out by National Tax Board. At the same time as the data is registered, certain checks and corrections are made. When notifications come to Statistics Sweden, a large part of the data is also checked before it is input into the TPR.

Personal records: Personal records were established by the parish offices in 1947. After this, a personal record was established for every person who was born or immigrated to Sweden until 30 June 1991. Transfer to microfiche and data registration is carried out by SVAR (Swedish Archive Information) in Ramsele, Sweden. Checks are carried out at the same time as the registration. Further logical checks are carried out when the registered material is delivered to Statistics Sweden. Errors are reported back to SVAR for investigation and correction.

Statistics Sweden's register of births: Between 1961 and 1967, all received information on births was coded and registered at Statistics Sweden. Data taken from the "plåtregister" or sheet register are kept by the country offices for registration. Prints from the sheet register were sent to Statistics Sweden where they were checked and coded. The data was then transferred to a magnetic tape.

8.1.3 Regulations

Attention is paid to known changes to registration numbers. This means that an individual should only appear once as an index person. Every individual (index person and parents) appears with the last known registration number.

In the TPR system, there are around 19 000 registration numbers which are suspected to be re-used. This is particularly the case for registration numbers of deceased persons. After a person has died, their registration number is re-used so that another person, who has perhaps immigrated, has been allocated the deceased person's registration number. This means that the parental links in this case will be unreliable. The registration number is suspected to have been re-used in cases when the person has a date of death

but is still registered after this date. The database for allocated registration numbers at the National Tax Board has so far only contained registration numbers that have been used and allocated since 1980. Registration numbers of persons who died before 1980 could therefore be allocated to persons who have immigrated and who have the same year and date of birth. Certain number series have also run out, where dates of birth such as 1 January and 1 July are over represented among persons who have immigrated, verified by the identity documents they brought with them. So that these problems can be eliminated from the Multi-Generation Register, the following rule was earlier used: If an index person has a suspected re-used registration number, all data has been deleted apart from the registration number and sex. If a parent has a re-used registration number, their country of birth has been deleted. A mark has also been added to the register to indicate that the registration number is suspected to be re-used. Table 6 in appendix 1 shows the number of suspected re-used registrations numbers, by year of birth of the index person. In this years version, the number of re-used registration numbers have increased and data on parents is no longer deleted. It is up to the researcher to decide how to handle re-used numbers.

In the national registration, there are gaps which lead to some index persons lacking all data on mother and father in the Multi-Generation Register. The text below describes the regulations which apply to create the Multi-Generation Register and which rules apply for the TPR, personal records and Statistics Sweden's register of births.

Rules applying to the TPR, personal records and Statistics Sweden's Register of births:

- Fathers with an incomplete date of birth or an unreasonable age are taken out. Fathers that are younger than 14 years or older than 80 years are considered to be of unreasonable age.
- Mothers with an incomplete date of birth or an unreasonable age are taken out. Mothers that are younger than 13 years or older than 60 years are considered of unreasonable age.

Rules applying to the TPR:

- For persons who have several differing details on mother and father, the registered mother/father is chosen ahead of the unregistered mother/father. Doubles of mother/father where both are registered or unregistered, and can therefore not be chosen, are taken out.
- Information on parents' country of birth is taken from the Registered persons section in the TPR system. If information on county of birth is present, the country of birth is written in as Sweden. For parents without information on country of birth in the Registered persons section, the country of birth can be taken from the Deceased and Emigrated sections of the TPR system. The following rules apply for country of birth in the TPR system. A person has Sweden as country of birth if they:
 - are born in Sweden and the mother and father are registered in Sweden and are the guardians
 - are born abroad of a mother who is registered in Sweden.

In the Multi-Generation Register, children who are born in Sweden of an unregistered mother also have Sweden as their country of birth. When immigrating, these children are then registered as born in Sweden.

- Adoptive parents with an incomplete date of birth or otherwise invalid registration number are taken out.
- When there is information on several adoptive mothers or adoptive fathers, the registered parents are chosen over the unregistered.

The following rules apply for personal records:

- Registration numbers in personal records only consist of the date of birth and a three-digit birth number. This is because the fourth and last digit in the registration number, i.e. the control digit, was first introduced in 1967. Because the personal records relate to those persons who were registered between 1961 and 1967, Statistics Sweden calculates the control digit in the registration number, using the modulus-10 method. In this way, the registration numbers in the personal records are adapted to how the registration numbers were formatted after 1967. When the registration number already has a control digit, it is possible to check that the date of birth and the three-digit birth number are correct. This is not possible if Statistics Sweden has itself calculated the control digit.
- It can occur that there is only a date of birth in the information from the personal records, i.e. no correct registration number. The information can be used once complemented with the parents' date of birth.
- The personal records also contain the country of birth in the form of the county of birth, for those born in Sweden. For those born abroad, the country of birth is written clearly. County of birth has been adapted according to the TPR system and it is interpreted that the country of birth is Sweden. Countries of birth which are clear in the personal records have also been adapted according to the TPR system rules.
- Information from personal records undergoes logical controls. Below are some examples of the controls which are carried out on the material:
 - date of birth \leq date of death
 - date of emigration $>$ date of birth
 - date of emigration $<$ date of death
 - information on sex registered from the personal records and is controlled through a calculation from the registration number

The rules applying to Statistics Sweden's register of births:

- The fourth and final digit in the registration number, i.e. the control digit, was introduced in 1967. The control digit in the registration number for persons born from 1961 to 1967, and who are in the Statistics Sweden register of births, is calculated using the modulus-10 method. In this way, all registration numbers taken from the register of births are adapted to how registration numbers were formatted after 1967. When the registration number already has a control digit, it is possible to check that the date of birth and the three-digit birth number are correct. This is not possible if Statistics Sweden has itself calculated the control digit.

- In the register of births, there is a code for the mother's county of birth. If there is information on the mother's county of birth, the country of birth of the mother is written as Sweden. There is no information in the register of births on the father's county or country of birth.

9 Timeliness

9.1 Frequency

The Multi-Generation Register is produced annually.

9.2 Production time

The production time for the Multi-Generation Register is approximately 3 weeks.

9.3 Punctuality

There is no official date for when the register should be ready. Versions of the register from earlier years have been ready for use during March each year.

10 Comparability and coherence

10.1 Comparability over time

The Multi-Generation Register was put together for the first time in 2000 and contained national registration data until 31 December 1999. Since then, an annual register has been produced and, since the Multi-Generation Register 2002, is complemented information from the TPR with information from personal records and from Statistics Sweden's register of births. Information in the Multi-Generation Register depends on the definitions and rules which are used in each system. See section 8.1.3 "Regulations".

In addition to the rules which are used when putting together the Multi-Generation Register, there are a number of events which had a strong impact on national registration and therefore also on the Multi-Generation Register. These events are described in chapter 2 "Objectives and Background".

The number of index persons increases for each year of the register. New-born persons and immigrants contribute to this increase; Newborn persons by increasing the number of index persons born during the previous year, and immigrants by increasing the numbers in general.

During a lifetime, the same person can have the need to change registration number. When the Multi-Generation Register is put together, attention is paid to these changed registration numbers. For persons changing registration number, it is possible to show all registration numbers. In the register, persons appear with their last known registration number.

10.2 Coherence with other statistics

The Multi-Generation Register is primarily intended for research and therefore coherence with other registers is, in many cases, essential. The register is used, for example, in medical studies where kinship is of key importance. An example of registers in which background information and result data can be taken for the study populations are the Population and Housing Census, the Cancer Register of the National Board of Health and Welfare or other medical registers.

Use with other registers is only possible after clearance for release from the respective authority in each specific case.

10.2.1 Population & Housing Census parents

The Population and Housing Censuses from 1960-1990 contain data on which persons belong to the same household dwelling, i.e. that live in the same dwelling. From these data on household situation and civil status, information on Population & Housing Census (PHC) parents and PHC children can be derived. *It should be noted that relationships in the PHC are not confirmed, which means that no biological relationship between children/siblings and parents can be recorded.*

A PHC parent is the adult man or woman who belongs to the same household dwelling as the child. The data are derived using the following variables: household situation, civil status and age. The definition of a PHC parent/sibling differs somewhat between the annual versions of the PHC.

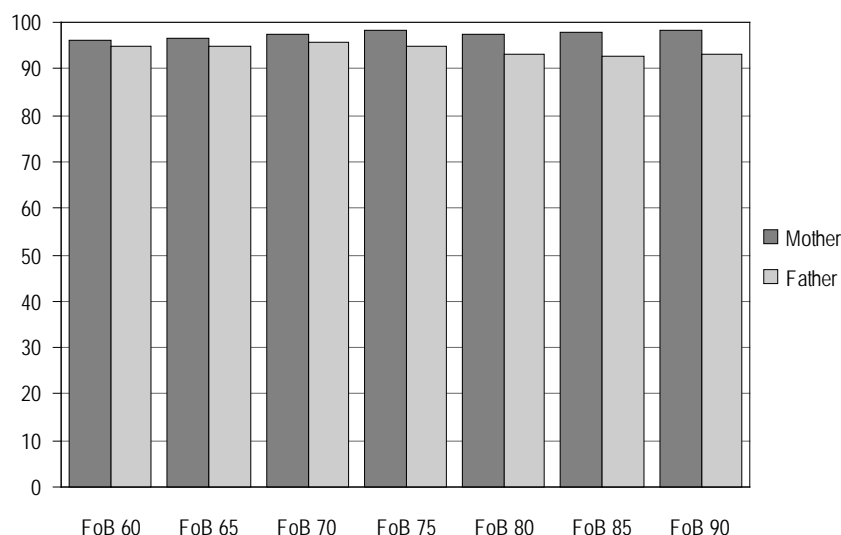
Information on a PHC parent can be used where appropriate, i.e. in studies on heritage versus environment.

A comparison has been done among those with information on both biological parent and PHC parent to see how great an extent the PHC parent is in agreement with biological parent (see graph 6).

Graph 6

Share of index persons where PHC mother and PHC father are in agreement with biological mother and biological father, by census year

Percent



The graph shows that PHC mother and biological mother are in agreement for 96 to 98 percent of index persons. The share of index persons where information on PHC father and biological father are in agreement is somewhat lower, between 93 and 96 percent.

For those index persons where information on PHC parent and biological parent is not in agreement, further analysis has been done to see if the PHC parent is a grandmother or a grandfather (see table 3A and 3B).

Table 4A
Number of index persons where PHC mother and biological mother or grandmother agree

PHC	PHC mother and biological mother agree		PHC mother and grandmother agree	
	Number of index persons	Share (percent)	Number of index persons	Share (percent)
60	2 185 795	96	15 476	0,7
65	2 297 052	96	25 809	1,1
70	2 342 442	98	20 826	0,9
75	2 222 301	98	12 563	0,6
80	2 202 867	97	15 002	0,7
85	2 131 150	98	9 820	0,5
90	2 057 426	98	6 363	0,3

Table 4B
Number of index persons where PHC father and biological father or grandfather agree

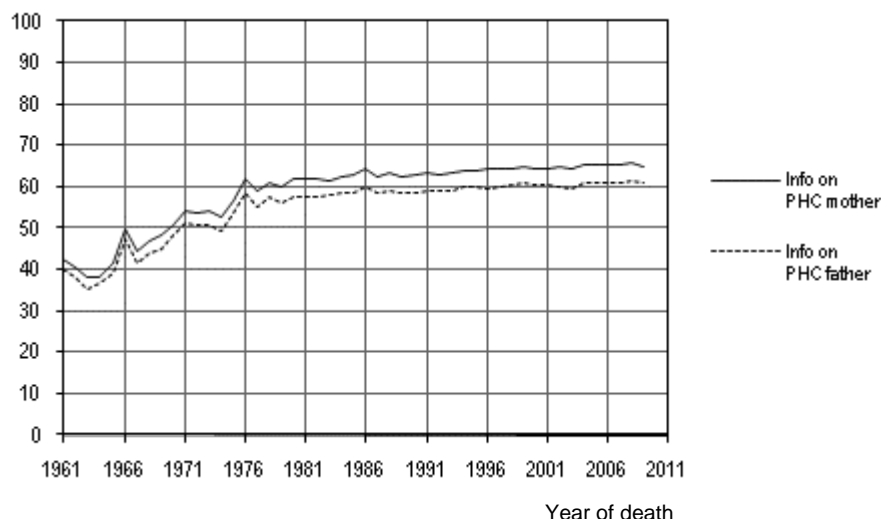
PHC	PHC father and biological father agree		PHC father and grandfather agree	
	Number of index persons	Share (percent)	Number of index persons	Share (percent)
60	2 014 967	95	11 137	0,5
65	2 104 965	95	18 427	0,8
70	2 131 291	96	14 648	0,7
75	2 008 380	95	8 571	0,4
80	1 894 994	93	10 902	0,5
85	1 807 223	93	6 619	0,3
90	1 743 322	93	3 894	0,2

There are considerable differences, depending on the age of index persons. The younger an index person, the more common that PHC parent is a grandparent (see appendix 1, table 9 and 10).

Graph 7 shows the number of deceased index persons, born in Sweden, with information on Population and Housing Census parents from the census between 1960-1990.

Graph 7**Deceased persons 1961-2009, born in Sweden. Share with information on PHC parents, 1960-1990**

Percent



Definitions in Population & Housing Census 1960 – Population & Housing Census 1970

PHC parents

A PHC parent is the person in charge of the property or spouse to the person in charge. The person in charge of the property is the person who is renting, who owns or, in some other way, is responsible for the entire property. In existing marriages, the man is generally considered the person in charge of the property.

If the household situation is not known, civil status is used to create the PHC parent. A person should be married, a widow / widower or divorced in order to be counted as a PHC parent.

PHC sibling (children)

The person should be the child of the person in charge of the property and / or their spouse and should be unmarried. The person can also be related to the person in charge of the property and/or their spouse in another way and be 17 years of age or younger and unmarried.

Grandchildren

The person should be the grandchild of the persons in charge of the property and/or their spouse and be unmarried. If there is more than one grandchild, a PHC sibling is created for this.

Definitions in Population & Housing Census 75

PHC parents

A PHC parent is the household owner or the person who is married or living with the property owner. The term property owner refers to the person among the inhabitants that rents, owns or in some other way is in charge of the property.

If the household situation is not known, civil status is used to create the PHC parent. A person should be married, a widow / widower or divorced in order to be counted as a PHC parent.

PHC sibling (children)

The person should be the child of the property owner and/or the person who is married or living with the property owner and should be unmarried. The person can also be any other inhabitant of the household who is aged 17 or younger and unmarried.

Definitions in Population & Housing Census 1980 – Population & Housing Census 1990

PHC parents

The PHC parent is a reference person in the household or the person married or living with the reference person. The term reference person refers to the person who in the individuals questionnaire is noted as married or living together. In the Population & Housing Census 85 and the Population & Housing Census 90, the oldest person among those noted as married or living together has been selected as the reference person. Both men and women are reference persons in the Population & Housing Census 80. In a household without persons who are married or living together, the oldest person in the household has been selected as the reference person.

If the household situation is not known, civil status is used to create the PHC parent. A person should be married, a widow / widower or divorced in order to be counted as a PHC parent.

PHC sibling (children)

The person should be a child to someone in the household and be unmarried. The person can also be any other person living in the household who is aged 17 or younger and unmarried.

11 Availability and clarity

11.1 Documentation

The work with the production and development of the Multi-Generation Register has resulted in the following published reports.

- Background facts on population and welfare statistics 2001:5, Multi-Generation Register, Annika Skarle
- Background facts on population and welfare statistics 2001:6, Study on the supplementary work and expansion of the Multi-Generation Register, Beatrice Kalnins, et. al.
- Background facts on population and welfare statistics 2002:1, Supplementary work on the Multi-Generation Register, results from test registration of personal records of deceased persons 1947-1967, Beatrice Kalnins
- "Multi-Generation Register 2002" – A short description of version 2002 in brochure format
- Background facts on population and welfare statistics 2003:5 (swe), 2003:5.1 (eng). "Multi-Generation Register 2002 – A description of contents and quality, Beatrice Kalnins et al.
- "Multi-Generation Register 2003" – Brief description in brochure format
- Background facts on population and welfare statistics 2004:5 (swe), 2004:7 (eng). "Multi-Generation Register 2003 – A description of contents and quality, Beatrice Kalnins et al.
- Background facts on population and welfare statistics 2005 " Data capture of personal records for supplements to Multi-Generation Register"
- Background facts on population and welfare statistics 2005:1 (swe). 2005:2 (eng) "Multi-Generation Register 2004 – A description of contents and quality"
- Background facts on population and welfare statistics 2006:5 (swe). 2006:6 (eng) "Multi-Generation Register 2005 – A description of contents and quality"
- Background facts on population and welfare statistics 2007:2 (swe). 2007:3 (eng) "Multi-Generation Register 2006 – A description of contents and quality"
- Background facts on population and welfare statistics 2008:1 (swe). 2008:2 (eng) "Multi-Generation Register 2007 – A description of contents and quality"
- Background facts on population and welfare statistics 2009:1 (swe). 2009:2 (eng) "Multi-Generation Register 2008 – A description of contents and quality"

11.2 Confidentiality and rules for handling personal information

Unidentifiable individual information from the Multi-Generation Register can be requested for research and statistical purposes. Every request to Statistics Sweden on the release of individual information undergoes a confidentiality test. Statistics Sweden is subject to statistical confidentiality rules which can be found in to 24 Chapter 8§ of the Public Access to Information and Secrecy Act (2009:400). For the automatic handling of personal information, the rules in the Personal Data Act (1998:204) also apply.

11.2.1 The Public Access to Information and Secrecy Act

According to 24 Chapter 8§ of the Public Access to Information and Secrecy Act (2009:400), confidentiality applies in specific activities of authorities that involve the production of statistics on data showing individual personal or economic situations and, which can be identified as belonging to that individual. The principal rule is therefore that data in statistical activities is secret and should not be given out. Exceptions to this rule have been made for information needed for research or statistical purposes, which cannot be directly linked to the individual through name, other identity symbol or comparable situation. In these cases, information can be given out, if it is clear that it can be revealed without the persons concerned or connected to the information being in any way harmed or injured. The term individual relates to physical as well as legal persons.

Before any information is issued under one of the exceptions, a judgement must always be made on the risk for harm or injury to the persons concerned by or connected with the information. It should be clear that the issuing of information can be done without risk.

11.2.2 Personal Data Act

The Personal Data Act (1998:204) contains certain fundamental decisions on the handling of personal information; among other things, that the handling should be legal and carried out in the correct manner and according to best practice. The information which is handled should be adequate and relevant. The information should be handled only if it is essential to the objectives of the activity.

Special rigorous rules apply for the handling of sensitive personal information, i.e. information on race or ethnic background, political views, religious or philosophical convictions, trade union membership and health or sexual circumstances. The handling of sensitive personal information for research purposes is allowed after explicit consent from the registered person. It is allowed even without such consent, if it is essential and approved by a research ethics committee or is recorded in advance to the Data Inspection Board, for advance control.

In the Official Statistics Ordinance (2001:100), there are specific rules outlining the extent to which sensitive information can be handled in the production of official statistics within the different statistical areas. Sensitive information, which can be handled for the production of official statistics, can also be used for other statistics and research. According to the Personal

Data Act, sensitive personal information can always be handled with the explicit consent from the registered person.

11.2.3 Longitudinal databases – key databases

According to the Official Statistics Act (2001:99), which came into force in April 2001, it is possible, for research and statistics purposes, to give out data with a serial number, which can be linked to a personal registration or organisation number using a code at the authority responsible for the statistics. Such information can be given out if the receiver has a specific need to add additional material later, such as the next year's information.

This release of unidentifiable material with a code means that the information, according to the Personal Data Act, will be considered as personal information for the recipient. The receiver then becomes responsible for the personal information and must follow the rules in the Personal Data Act.

11.3 Inquiries

A written request for the information required should be sent to the contact person at Statistics Sweden. When the information is to be used for research, Statistics Sweden would like to see a project description attached. If the research project has been tested by an ethics committee, the application and decision should also be attached. In cases where the information can be given out, Statistics Sweden will specify the delivery conditions, quality of the information and price in an offer.

Appendix 1

Tables showing index persons and biological parents

Multi-Generation Register version 2009-12-31

Table 1
Number of index persons, by birth year, information on mother and father and on country of birth

Birth year	Number of index persons	Information on parents				Information on country of birth					
		Information on mother		Information on father		Born in Sweden		Foreign-born		Unknown	
		Number	Share	Number	Share	Number	Share	Number	Share	Number	Share
1932	102 747	31 243	0,30	27 077	0,26	81 569	0,79	15 763	0,15	5 415	0,05
1933	98 612	54 820	0,56	49 326	0,50	77 820	0,79	15 666	0,16	5 126	0,05
1934	100 305	65 300	0,65	59 217	0,59	77 975	0,78	17 221	0,17	5 109	0,05
1935	102 108	70 170	0,69	63 951	0,63	79 054	0,77	17 893	0,18	5 161	0,05
1936	105 921	75 004	0,71	68 832	0,65	82 244	0,78	18 493	0,17	5 184	0,05
1937	108 548	77 358	0,71	71 298	0,66	83 824	0,77	19 780	0,18	4 944	0,05
1938	113 033	81 817	0,72	75 506	0,67	87 563	0,77	20 641	0,18	4 829	0,04
1939	117 926	86 031	0,73	79 662	0,68	91 264	0,77	21 840	0,19	4 822	0,04
1940	116 620	86 039	0,74	79 837	0,68	90 061	0,77	21 889	0,19	4 670	0,04
1941	122 736	91 434	0,74	85 685	0,70	94 264	0,77	23 623	0,19	4 849	0,04
1942	135 291	106 234	0,79	100 073	0,74	108 803	0,80	22 256	0,16	4 232	0,03
1943	147 475	117 194	0,79	110 980	0,75	119 457	0,81	23 769	0,16	4 249	0,03
1944	156 336	125 916	0,81	119 254	0,76	127 504	0,82	24 756	0,16	4 076	0,03
1945	158 544	127 655	0,81	120 881	0,76	128 317	0,81	26 301	0,17	3 926	0,02
1946	160 776	127 966	0,80	121 842	0,76	126 836	0,79	30 137	0,19	3 803	0,02
1947	158 762	125 562	0,79	120 165	0,76	123 421	0,78	31 723	0,20	3 618	0,02
1948	157 105	124 209	0,79	119 192	0,76	121 488	0,77	32 263	0,21	3 354	0,02
1949	151 238	119 682	0,79	115 125	0,76	116 447	0,77	31 903	0,21	2 888	0,02
1950	145 162	114 413	0,79	110 381	0,76	110 989	0,76	31 569	0,22	2 604	0,02
1951	138 995	109 765	0,79	105 822	0,76	106 124	0,76	30 640	0,22	2 231	0,02
1952	139 407	110 438	0,79	107 020	0,77	106 416	0,76	30 970	0,22	2 021	0,01
1953	139 284	111 054	0,80	107 785	0,77	106 593	0,77	30 868	0,22	1 823	0,01
1954	135 676	107 073	0,79	103 958	0,77	101 981	0,75	32 143	0,24	1 552	0,01
1955	138 135	109 656	0,79	106 582	0,77	104 399	0,76	32 299	0,23	1 437	0,01
1956	139 672	110 823	0,79	107 836	0,77	105 209	0,75	33 013	0,24	1 450	0,01
1957	138 701	110 239	0,79	107 362	0,77	104 349	0,75	33 008	0,24	1 344	0,01
1958	136 639	108 880	0,80	105 958	0,78	103 245	0,76	32 248	0,24	1 146	0,01
1959	137 026	109 251	0,80	106 273	0,78	102 779	0,75	33 188	0,24	1 059	0,01
1960	136 569	107 134	0,78	104 116	0,76	100 419	0,74	35 082	0,26	1 068	0,01
1961	139 466	112 124	0,80	109 093	0,78	104 656	0,75	34 023	0,24	787	0,01
1962	143 274	114 920	0,80	111 754	0,78	107 081	0,75	35 417	0,25	776	0,01
1963	149 529	121 220	0,81	117 824	0,79	112 843	0,75	35 964	0,24	722	0,00
1964	160 173	131 198	0,82	127 640	0,80	122 536	0,77	36 988	0,23	649	0,00
1965	160 386	131 251	0,82	127 873	0,80	122 881	0,77	37 008	0,23	497	0,00
1966	159 752	131 176	0,82	127 895	0,80	122 977	0,77	36 458	0,23	317	0,00
1967	158 279	129 725	0,82	126 525	0,80	121 391	0,77	36 634	0,23	254	0,00
1968	150 506	121 793	0,81	118 789	0,79	113 201	0,75	37 084	0,25	221	0,00
1969	143 761	115 524	0,80	112 699	0,78	107 704	0,75	35 897	0,25	160	0,00
1970	145 527	117 205	0,81	114 475	0,79	110 256	0,76	35 174	0,24	97	0,00
1971	148 315	121 346	0,82	118 505	0,80	114 621	0,77	33 633	0,23	61	0,00
1972	146 832	119 916	0,82	117 110	0,80	112 507	0,77	34 282	0,23	43	0,00
1973	143 381	117 782	0,82	115 045	0,80	109 861	0,77	33 476	0,23	44	0,00
1974	144 574	118 396	0,82	115 827	0,80	110 108	0,76	34 422	0,24	44	0,00
1975	138 251	112 172	0,81	109 617	0,79	103 823	0,75	34 372	0,25	56	0,00
1976	132 445	106 638	0,81	104 115	0,79	98 515	0,74	33 883	0,26	47	0,00
1977	129 604	104 400	0,81	102 040	0,79	96 237	0,74	33 338	0,26	29	0,00
1978	127 133	101 741	0,80	99 426	0,78	93 450	0,74	33 650	0,26	33	0,00
1979	129 705	105 258	0,81	102 807	0,79	96 461	0,74	33 207	0,26	37	0,00
1980	131 472	106 669	0,81	104 204	0,79	97 313	0,74	34 127	0,26	32	0,00
1981	126 360	103 886	0,82	101 497	0,80	94 274	0,75	32 057	0,25	29	0,00

Table 1 (cont.)

Birth year	Number of index persons	Information on parents				Information on country of birth					
		Information on mother		Information on father		Born in Sweden		Foreign-born		Unknown	
		Number	Share	Number	Share	Number	Share	Number	Share	Number	Share
1982	125 418	103 573	0,83	101 043	0,81	93 159	0,74	32 226	0,26	33	0,00
1983	122 841	102 771	0,84	100 269	0,82	91 957	0,75	30 855	0,25	29	0,00
1984	123 472	105 430	0,85	102 936	0,83	94 110	0,76	29 332	0,24	30	0,00
1985	125 681	110 245	0,88	107 540	0,86	98 646	0,78	27 014	0,21	21	0,00
1986	126 555	113 794	0,90	111 029	0,88	102 114	0,81	24 423	0,19	18	0,00
1987	126 125	116 410	0,92	113 644	0,90	104 929	0,83	21 176	0,17	20	0,00
1988	131 735	124 465	0,94	121 497	0,92	112 518	0,85	19 192	0,15	25	0,00
1989	133 882	128 173	0,96	125 085	0,93	116 544	0,87	17 310	0,13	28	0,00
1990	140 923	136 299	0,97	132 917	0,94	124 825	0,89	16 080	0,11	18	0,00
1991	138 982	135 415	0,97	132 040	0,95	124 216	0,89	14 739	0,11	27	0,00
1992	136 576	132 991	0,97	129 758	0,95	123 415	0,90	13 128	0,10	33	0,00
1993	130 051	127 081	0,98	123 647	0,95	118 298	0,91	11 724	0,09	29	0,00
1994	123 788	121 922	0,98	118 755	0,96	112 479	0,91	11 283	0,09	26	0,00
1995	114 523	112 896	0,99	109 729	0,96	103 636	0,90	10 865	0,09	22	0,00
1996	106 067	104 666	0,99	101 618	0,96	95 508	0,90	10 534	0,10	25	0,00
1997	101 164	99 741	0,99	96 854	0,96	90 755	0,90	10 378	0,10	31	0,00
1998	99 604	98 324	0,99	95 595	0,96	89 789	0,90	9 801	0,10	14	0,00
1999	98 413	97 156	0,99	94 695	0,96	89 013	0,90	9 387	0,10	13	0,00
2000	100 460	99 261	0,99	96 877	0,96	91 322	0,91	9 127	0,09	11	0,00
2001	100 635	99 404	0,99	97 046	0,96	92 235	0,92	8 392	0,08	0	0,00
2002	104 596	103 330	0,99	101 223	0,97	96 765	0,93	7 823	0,07	8	0,00
2003	107 232	106 009	0,99	103 961	0,97	100 230	0,93	6 987	0,07	0	0,00
2004	108 707	107 717	0,99	105 715	0,97	102 053	0,94	6 647	0,06	7	0,00
2005	108 329	107 456	0,99	105 662	0,98	102 404	0,95	5 914	0,05	11	0,00
2006	111 842	111 332	1,00	109 385	0,98	106 817	0,96	5 017	0,04	8	0,00
2007	111 993	111 540	1,00	109 652	0,98	108 216	0,97	3 764	0,03	13	0,00
2008	112 192	111 773	1,00	109 610	0,98	109 999	0,98	2 187	0,02	6	0,00
2009	112 665	112 458	1,00	106 038	0,94	112 059	0,99	605	0,01	1	0,00
Total	10 132 525	8 488 332	0,84	8 209 576	0,81	8 151 121	0,80	1 877 949	0,19	103 455	0,01

Table 2
Number of index persons born in Sweden, by birth year and
information on mother and father

Birth year	Number of index persons	Information on mother		Information on father	
		Number	Share	Number	Share
1932	81 569	30 393	0,37	26 433	0,32
1933	77 820	53 532	0,69	48 293	0,62
1934	77 975	63 733	0,82	58 007	0,74
1935	79 054	68 405	0,87	62 577	0,79
1936	82 244	73 037	0,89	67 314	0,82
1937	83 824	75 254	0,90	69 692	0,83
1938	87 563	79 591	0,91	73 850	0,84
1939	91 264	83 644	0,92	77 879	0,85
1940	90 061	83 454	0,93	77 980	0,87
1941	94 264	88 391	0,94	83 480	0,89
1942	108 803	103 229	0,95	97 814	0,90
1943	119 457	113 952	0,95	108 511	0,91
1944	127 504	122 479	0,96	116 643	0,91
1945	128 317	123 902	0,97	117 970	0,92
1946	126 836	123 458	0,97	118 251	0,93
1947	123 421	120 581	0,98	116 006	0,94
1948	121 488	119 124	0,98	114 990	0,95
1949	116 447	114 441	0,98	110 704	0,95
1950	110 989	109 206	0,98	105 991	0,95
1951	106 124	104 499	0,98	101 443	0,96
1952	106 416	104 960	0,99	102 423	0,96
1953	106 593	105 233	0,99	102 927	0,97
1954	101 981	100 890	0,99	98 686	0,97
1955	104 399	103 317	0,99	101 188	0,97
1956	105 209	104 268	0,99	102 221	0,97
1957	104 349	103 448	0,99	101 548	0,97
1958	103 245	102 420	0,99	100 464	0,97
1959	102 779	102 002	0,99	100 107	0,97
1960	100 419	99 734	0,99	97 780	0,97
1961	104 656	104 636	1,00	102 697	0,98
1962	107 081	107 063	1,00	105 097	0,98
1963	112 843	112 821	1,00	110 777	0,98
1964	122 536	122 518	1,00	120 339	0,98
1965	122 881	122 858	1,00	120 822	0,98
1966	122 977	122 952	1,00	121 082	0,98
1967	121 391	121 361	1,00	119 664	0,99
1968	113 201	113 120	1,00	111 611	0,99
1969	107 704	107 619	1,00	106 218	0,99
1970	110 256	110 180	1,00	108 807	0,99
1971	114 621	114 538	1,00	113 183	0,99
1972	112 507	112 433	1,00	111 143	0,99
1973	109 861	109 788	1,00	108 583	0,99
1974	110 108	110 045	1,00	108 987	0,99
1975	103 823	103 759	1,00	102 731	0,99
1976	98 515	98 412	1,00	97 473	0,99
1977	96 237	96 142	1,00	95 272	0,99
1978	93 450	93 346	1,00	92 507	0,99
1979	96 461	96 387	1,00	95 501	0,99
1980	97 313	97 230	1,00	96 405	0,99
1981	94 274	94 183	1,00	93 431	0,99

Table 2 (cont.)

Birth year	Number of index persons	Information on mother		Information on father	
		Number	Share	Number	Share
1982	93 159	93 087	1,00	92 319	0,99
1983	91 957	91 879	1,00	91 153	0,99
1984	94 110	94 012	1,00	93 318	0,99
1985	98 646	98 532	1,00	97 741	0,99
1986	102 114	101 967	1,00	101 104	0,99
1987	104 929	104 798	1,00	103 923	0,99
1988	112 518	112 392	1,00	111 461	0,99
1989	116 544	116 378	1,00	115 346	0,99
1990	124 825	124 489	1,00	123 324	0,99
1991	124 216	123 824	1,00	122 758	0,99
1992	123 415	122 336	0,99	121 287	0,98
1993	118 298	117 397	0,99	116 335	0,98
1994	112 479	112 312	1,00	111 352	0,99
1995	103 636	103 483	1,00	102 607	0,99
1996	95 508	95 424	1,00	94 611	0,99
1997	90 755	90 691	1,00	89 839	0,99
1998	89 789	89 781	1,00	88 952	0,99
1999	89 013	88 999	1,00	88 221	0,99
2000	91 322	91 313	1,00	90 474	0,99
2001	92 235	92 217	1,00	91 294	0,99
2002	96 765	96 737	1,00	95 792	0,99
2003	100 230	100 208	1,00	99 159	0,99
2004	102 053	102 029	1,00	100 881	0,99
2005	102 404	102 381	1,00	101 203	0,99
2006	106 817	106 804	1,00	105 448	0,99
2007	108 216	108 175	1,00	106 647	0,99
2008	109 999	109 913	1,00	107 927	0,98
2009	112 059	111 937	1,00	105 569	0,94
Total	8 151 121	7 955 463	0,98	7 773 547	0,95

Table 3
Number of foreign-born index persons, by birth year and information on mother and father

Birth year	Number of index persons	Information on mother		Information on father	
		Number	Share	Number	Share
1932	15 763	511	0,03	367	0,02
1933	15 666	804	0,05	607	0,04
1934	17 221	982	0,06	717	0,04
1935	17 893	1 146	0,06	854	0,05
1936	18 493	1 263	0,07	928	0,05
1937	19 780	1 414	0,07	1 037	0,05
1938	20 641	1 530	0,07	1 084	0,05
1939	21 840	1 718	0,08	1 222	0,06
1940	21 889	1 882	0,09	1 296	0,06
1941	23 623	2 258	0,10	1 578	0,07
1942	22 256	2 126	0,10	1 552	0,07
1943	23 769	2 348	0,10	1 724	0,07
1944	24 756	2 428	0,10	1 796	0,07
1945	26 301	2 544	0,10	1 919	0,07
1946	30 137	3 149	0,10	2 434	0,08
1947	31 723	3 397	0,11	2 774	0,09
1948	32 263	3 488	0,11	2 821	0,09
1949	31 903	3 658	0,11	3 033	0,10
1950	31 569	3 717	0,12	3 102	0,10
1951	30 640	3 862	0,13	3 194	0,10
1952	30 970	4 097	0,13	3 425	0,11
1953	30 868	4 488	0,15	3 730	0,12
1954	32 143	4 992	0,16	4 247	0,13
1955	32 299	5 196	0,16	4 395	0,14
1956	33 013	5 348	0,16	4 592	0,14
1957	33 008	5 637	0,17	4 833	0,15
1958	32 248	5 448	0,17	4 613	0,14
1959	33 188	6 350	0,19	5 383	0,16
1960	35 082	6 466	0,18	5 519	0,16
1961	34 023	6 784	0,20	5 777	0,17
1962	35 417	7 163	0,20	6 030	0,17
1963	35 964	7 764	0,22	6 482	0,18
1964	36 988	8 103	0,22	6 790	0,18
1965	37 008	7 950	0,21	6 678	0,18
1966	36 458	7 952	0,22	6 578	0,18
1967	36 634	8 160	0,22	6 694	0,18
1968	37 084	8 489	0,23	7 030	0,19
1969	35 897	7 782	0,22	6 380	0,18
1970	35 174	6 969	0,20	5 626	0,16
1971	33 633	6 775	0,20	5 299	0,16
1972	34 282	7 468	0,22	5 954	0,17
1973	33 476	7 982	0,24	6 451	0,19
1974	34 422	8 343	0,24	6 832	0,20
1975	34 372	8 404	0,24	6 879	0,20
1976	33 883	8 224	0,24	6 637	0,20
1977	33 338	8 257	0,25	6 767	0,20
1978	33 650	8 393	0,25	6 917	0,21
1979	33 207	8 866	0,27	7 305	0,22
1980	34 127	9 437	0,28	7 799	0,23
1981	32 057	9 696	0,30	8 061	0,25

Table 3 (cont.)

Birth year	Number of index persons	Information on mother		Information on father	
		Number	Share	Number	Share
1982	32 226	10 478	0,33	8 717	0,27
1983	30 855	10 883	0,35	9 110	0,30
1984	29 332	11 412	0,39	9 614	0,33
1985	27 014	11 704	0,43	9 793	0,36
1986	24 423	11 823	0,48	9 922	0,41
1987	21 176	11 599	0,55	9 711	0,46
1988	19 192	12 058	0,63	10 025	0,52
1989	17 310	11 781	0,68	9 730	0,56
1990	16 080	11 796	0,73	9 585	0,60
1991	14 739	11 571	0,79	9 272	0,63
1992	13 128	10 628	0,81	8 459	0,64
1993	11 724	9 663	0,82	7 303	0,62
1994	11 283	9 588	0,85	7 385	0,65
1995	10 865	9 395	0,86	7 107	0,65
1996	10 534	9 222	0,88	6 993	0,66
1997	10 378	9 032	0,87	6 997	0,67
1998	9 801	8 530	0,87	6 633	0,68
1999	9 387	8 146	0,87	6 464	0,69
2000	9 127	7 937	0,87	6 392	0,70
2001	8 392	7 180	0,86	5 748	0,68
2002	7 823	6 585	0,84	5 423	0,69
2003	6 987	5 787	0,83	4 792	0,69
2004	6 647	5 681	0,85	4 828	0,73
2005	5 914	5 064	0,86	4 451	0,75
2006	5 017	4 521	0,90	3 929	0,78
2007	3 764	3 353	0,89	2 997	0,80
2008	2 187	1 855	0,85	1 681	0,77
2009	605	520	0,86	469	0,78
Total	1 877 949	499 000	0,27	407 272	0,22

Table 4A**Amount of data on index persons born in Sweden, by birth year and source for own country of birth**

Birth year	Total	Source own country of birth			
		TPR	Personal record	Register of births	Population and Housing Census
1932	81 569	81 545	7	.	17
1933	77 820	77 787	6	.	27
1934	77 975	77 952	8	.	15
1935	79 054	79 030	8	.	16
1936	82 244	82 215	9	.	20
1937	83 824	83 797	4	.	23
1938	87 563	87 539	3	.	21
1939	91 264	91 227	0	.	37
1940	90 061	90 035	4	.	22
1941	94 264	94 233	2	.	29
1942	108 803	108 771	2	.	30
1943	119 457	119 419	7	.	31
1944	127 504	127 465	2	.	37
1945	128 317	128 272	9	.	36
1946	126 836	126 796	8	.	32
1947	123 421	123 386	11	.	24
1948	121 488	121 461	10	.	17
1949	116 447	116 420	7	.	20
1950	110 989	110 966	1	.	22
1951	106 124	106 103	3	.	18
1952	106 416	106 392	4	.	20
1953	106 593	106 581	1	.	11
1954	101 981	101 970	1	.	10
1955	104 399	104 384	2	.	13
1956	105 209	105 195	2	.	12
1957	104 349	104 333	4	.	12
1958	103 245	103 236	0	.	9
1959	102 779	102 769	2	.	8
1960	100 419	100 317	94	.	8
1961	104 656	101 686	1 822	1 147	1
1962	107 081	104 340	1 743	998	0
1963	112 843	109 999	1 736	1 108	0
1964	122 536	119 663	1 756	1 117	0
1965	122 881	120 194	1 572	1 115	0
1966	122 977	120 601	1 426	949	1
1967	121 391	119 434	1 217	740	0
1968	113 201	112 629	0	572	0
1969	107 704	107 411	0	293	0
1970	110 256	110 006	0	250	0
1971	114 621	114 031	0	590	0
1972	112 507	111 937	0	570	0
1973	109 861	109 804	0	57	0
1974	110 108	110 086	0	22	0
1975	103 823	103 792	0	31	0
1976	98 515	98 490	0	25	0
1977	96 237	96 221	0	16	0
1978	93 450	93 440	0	10	0
1979	96 461	96 453	0	8	0
1980	97 313	97 306	0	7	0
1981	94 274	94 268	0	6	0

Table 4A (cont.)

Birth year	Total	Source own country of birth			
		TPR	Personal record	Register of births	Population and Housing Census
1982	93 159	93 153	0	6	0
1983	91 957	91 948	0	9	0
1984	94 110	94 107	0	3	0
1985	98 646	98 643	0	3	0
1986	102 114	102 110	0	4	0
1987	104 929	104 924	0	5	0
1988	112 518	112 512	0	6	0
1989	116 544	116 534	0	10	0
1990	124 825	124 818	0	7	0
1991	124 216	124 204	0	12	0
1992	123 415	123 409	0	6	0
1993	118 298	118 287	0	11	0
1994	112 479	112 474	0	5	0
1995	103 636	103 628	0	8	0
1996	95 508	95 504	0	4	0
1997	90 755	90 747	0	8	0
1998	89 789	89 789	0	0	0
1999	89 013	89 013	0	0	0
2000	91 322	91 322	0	0	0
2001	92 235	92 235	0	0	0
2002	96 765	96 765	0	0	0
2003	100 230	100 230	0	0	0
2004	102 053	102 053	0	0	0
2005	102 404	102 404	0	0	0
2006	106 817	106 817	0	0	0
2007	108 216	108 216	0	0	0
2008	109 999	109 999	0	0	0
2009	112 059	112 059	0	0	0
Total	8 151 121	8 129 291	11 493	9 738	599

Table 4B**Amount of data on index persons born in Sweden, by birth year and source for parents' country of birth**

Birth year	Total	Source mother's country of birth				No data	Source father's country of birth				No data
		TPR	Personal records	Register of births	PHC		TPR	Personal records	Register of births*	PHC	
1932	81 569	28 587	49	0	70	52 863	23 226	100	.	101	58 142
1933	77 820	50 022	125	0	132	27 541	42 334	187	.	202	35 097
1934	77 975	60 024	115	0	128	17 708	51 373	198	.	247	26 157
1935	79 054	64 823	137	0	146	13 948	56 258	183	.	245	22 368
1936	82 244	69 468	134	0	113	12 529	61 015	213	.	254	20 762
1937	83 824	71 910	151	0	130	11 633	63 700	193	.	221	19 710
1938	87 563	76 503	125	0	118	10 817	68 104	200	.	236	19 023
1939	91 264	80 685	140	0	106	10 333	72 317	233	.	217	18 497
1940	90 061	80 678	118	0	105	9 160	72 914	191	.	209	16 747
1941	94 264	85 645	149	0	115	8 355	78 533	186	.	220	15 325
1942	108 803	100 440	139	0	89	8 135	92 447	222	.	227	15 907
1943	119 457	111 018	138	0	98	8 203	103 201	194	.	255	15 807
1944	127 504	119 768	138	0	99	7 499	111 492	215	.	224	15 573
1945	128 317	121 445	114	0	87	6 671	112 919	233	.	200	14 965
1946	126 836	121 202	113	0	81	5 440	113 664	169	.	209	12 794
1947	123 421	118 534	92	0	79	4 716	111 937	158	.	166	11 160
1948	121 488	117 398	70	0	57	3 963	111 433	132	.	167	9 756
1949	116 447	113 038	86	0	55	3 268	107 701	116	.	170	8 460
1950	110 989	108 069	85	0	53	2 782	103 562	101	.	119	7 207
1951	106 124	103 508	87	0	29	2 500	99 424	96	.	108	6 496
1952	106 416	104 159	75	0	35	2 147	100 643	96	.	115	5 562
1953	106 593	104 526	86	0	33	1 948	101 390	73	.	102	5 028
1954	101 981	100 369	70	0	35	1 507	97 438	93	.	76	4 374
1955	104 399	102 858	85	0	31	1 425	100 149	66	.	87	4 097
1956	105 209	103 922	62	0	34	1 191	101 345	52	.	89	3 723
1957	104 349	103 127	70	0	24	1 128	100 806	53	.	92	3 398
1958	103 245	102 203	45	0	35	962	99 906	34	.	94	3 211
1959	102 779	101 851	43	0	32	853	99 694	32	.	92	2 961
1960	100 419	99 620	36	0	21	742	97 527	37	.	66	2 789
1961	104 656	104 214	76	0	102	264	102 202	54	.	143	2 257
1962	107 081	106 481	60	0	96	444	104 468	65	.	128	2 420
1963	112 843	112 117	81	0	80	565	109 994	53	.	120	2 676
1964	122 536	121 698	79	0	80	679	119 407	68	.	123	2 938
1965	122 881	122 005	63	1	84	728	119 907	65	.	107	2 802
1966	122 977	122 161	62	0	74	680	120 189	52	.	109	2 627
1967	121 391	120 754	60	0	87	490	118 984	47	.	127	2 233
1968	113 201	112 803	7	0	85	306	111 275	8	.	82	1 836
1969	107 704	107 332	2	0	77	293	105 947	0	.	67	1 690
1970	110 256	109 967	2	0	102	185	108 603	1	.	75	1 577
1971	114 621	114 391	1	0	90	139	113 051	0	.	69	1 501
1972	112 507	112 339	0	0	70	98	111 040	0	.	61	1 406
1973	109 861	109 714	0	3	64	80	108 518	0	.	35	1 308
1974	110 108	109 970	0	8	57	73	108 914	0	.	47	1 147
1975	103 823	103 695	1	6	38	83	102 672	0	.	29	1 122
1976	98 515	98 344	0	11	38	122	97 410	0	.	31	1 074
1977	96 237	96 071	1	17	41	107	95 207	0	.	37	993
1978	93 450	93 277	0	56	4	113	92 456	0	.	26	968
1979	96 461	96 320	0	42	4	95	95 437	0	.	24	1 000
1980	97 313	97 180	0	36	3	94	96 367	0	.	11	935
1981	94 274	94 140	0	34	2	98	93 386	0	.	12	876

Table 4B (cont.)

Birth year	Total	Source mother's country of birth				No data	Source father's country of birth				No data
		TPR	Personal records	Register of births	PHC		TPR	Personal records	Register of births*	PHC	
1982	93 159	93 047	0	34	1	77	92 293	0	.	7	859
1983	91 957	91 829	0	36	2	90	91 120	0	.	14	823
1984	94 110	93 977	0	29	1	103	93 289	0	.	8	813
1985	98 646	98 484	0	37	1	124	97 718	0	.	8	920
1986	102 114	101 927	0	38	0	149	101 076	0	.	6	1 032
1987	104 929	104 759	0	36	0	134	103 900	0	.	9	1 020
1988	112 518	112 337	0	43	1	137	111 432	0	.	8	1 076
1989	116 544	116 329	0	44	0	171	115 318	0	.	9	1 217
1990	124 825	124 418	0	61	2	344	123 298	0	.	5	1 522
1991	124 216	123 804	0	12	0	400	122 721	0	.	6	1 489
1992	123 415	122 323	0	7	0	1 085	121 270	0	.	3	2 141
1993	118 298	117 378	0	12	0	908	116 304	0	.	3	1 991
1994	112 479	112 300	0	4	0	175	111 332	0	.	0	1 147
1995	103 636	103 469	0	9	0	158	102 574	0	.	3	1 057
1996	95 508	95 416	0	2	0	90	94 588	0	.	1	919
1997	90 755	90 681	0	5	0	69	89 826	0	.	1	927
1998	89 789	89 781	0	0	0	8	88 936	2	.	0	851
1999	89 013	88 997	0	0	0	16	88 209	0	.	0	804
2000	91 322	91 311	0	0	0	11	90 462	0	.	0	860
2001	92 235	92 212	0	0	0	23	91 282	0	.	0	953
2002	96 765	96 733	0	0	0	32	95 786	0	.	0	978
2003	100 230	100 201	0	0	0	29	99 152	0	.	0	1 078
2004	102 053	102 023	0	0	0	30	100 876	0	.	0	1 177
2005	102 404	102 369	0	0	0	35	101 191	1	.	0	1 212
2006	106 817	106 794	0	0	0	23	105 432	0	.	0	1 384
2007	108 216	108 163	0	0	0	53	106 640	0	.	0	1 576
2008	109 999	109 902	0	0	0	97	107 913	0	.	0	2 086
2009	112 059	111 919	0	0	0	140	105 544	0	.	0	6 515
Total	8 151 121	7 893 256	3 372	623	3 456	250 414	7 661 368	4 472	.	6 364	478 909

*) There is no information about the father's country of birth in the Register of births.

Table 4C**Amount of data on index persons born in Sweden, by birth number and source for mother's registration number and birth date**

Birth year	Total	Source mother's registration no.			No data	Source mother's birth date			No data
		TPR	Personal records	Register of births		TPR	Personal records	Register of births	
1932	81 569	30 221	172	.	51 176	33 644	206	.	47 719
1933	77 820	53 190	342	.	24 288	57 301	369	.	20 150
1934	77 975	63 382	351	.	14 242	67 726	385	.	9 864
1935	79 054	68 046	359	.	10 649	72 312	376	.	6 366
1936	82 244	72 695	342	.	9 207	76 576	361	.	5 307
1937	83 824	74 942	312	.	8 570	78 631	328	.	4 865
1938	87 563	79 283	308	.	7 972	82 739	325	.	4 499
1939	91 264	83 293	351	.	7 620	86 685	369	.	4 210
1940	90 061	83 138	316	.	6 607	86 037	335	.	3 689
1941	94 264	88 064	327	.	5 873	90 455	341	.	3 468
1942	108 803	102 870	359	.	5 574	105 066	372	.	3 365
1943	119 457	113 603	349	.	5 505	115 567	356	.	3 534
1944	127 504	122 122	357	.	5 025	123 885	372	.	3 247
1945	128 317	123 543	359	.	4 415	125 036	367	.	2 914
1946	126 836	123 180	278	.	3 378	124 204	286	.	2 346
1947	123 421	120 319	262	.	2 840	121 133	271	.	2 017
1948	121 488	118 917	207	.	2 364	119 506	209	.	1 773
1949	116 447	114 261	180	.	2 006	114 697	181	.	1 569
1950	110 989	109 073	133	.	1 783	109 437	133	.	1 419
1951	106 124	104 407	92	.	1 625	104 697	89	.	1 338
1952	106 416	104 837	123	.	1 456	105 108	122	.	1 186
1953	106 593	105 116	117	.	1 360	105 393	112	.	1 088
1954	101 981	100 822	68	.	1 091	101 012	68	.	901
1955	104 399	103 191	126	.	1 082	103 355	122	.	922
1956	105 209	104 152	116	.	941	104 298	114	.	797
1957	104 349	103 321	127	.	901	103 463	126	.	760
1958	103 245	102 298	122	.	825	102 412	124	.	709
1959	102 779	101 866	136	.	777	101 968	134	.	677
1960	100 419	99 566	168	.	685	99 649	166	.	604
1961	104 656	103 055	853	728	20	103 171	854	613	18
1962	107 081	105 647	773	643	18	105 751	775	542	13
1963	112 843	111 371	807	643	22	111 491	808	524	20
1964	122 536	121 099	823	596	18	121 221	823	481	11
1965	122 881	121 701	648	509	23	121 806	647	411	17
1966	122 977	121 890	594	468	25	121 962	598	397	20
1967	121 391	120 402	540	419	30	120 467	544	357	23
1968	113 201	112 365	0	755	81	112 428	0	755	18
1969	107 704	107 026	0	593	85	107 088	0	600	16
1970	110 256	109 599	0	581	76	109 665	0	580	11
1971	114 621	113 971	0	567	83	114 035	0	567	19
1972	112 507	111 971	0	462	74	112 022	0	466	19
1973	109 861	109 374	0	414	73	109 433	0	414	14
1974	110 108	109 637	0	408	63	109 686	0	412	10
1975	103 823	103 408	0	351	64	103 462	0	348	13
1976	98 515	98 094	0	318	103	98 173	0	326	16
1977	96 237	95 839	0	303	95	95 910	0	314	13
1978	93 450	93 077	0	269	104	93 165	0	275	10
1979	96 461	96 135	0	252	74	96 195	0	256	10
1980	97 313	97 032	0	198	83	97 098	0	201	14
1981	94 274	94 027	0	156	91	94 107	0	161	6

Table 4C (cont.)

Birth year	Total	Source mother's registration no.			No data	Source mother's birth date			No data
		TPR	Personal records	Register of births		TPR	Personal records	Register of births	
1982	93 159	92 932	0	155	72	92 990	0	160	9
1983	91 957	91 713	0	166	78	91 781	0	169	7
1984	94 110	93 869	0	143	98	93 953	0	149	8
1985	98 646	98 387	0	145	114	98 483	0	150	13
1986	102 114	101 825	0	142	147	101 950	0	158	6
1987	104 929	104 671	0	127	131	104 789	0	135	5
1988	112 518	112 251	0	141	126	112 360	0	153	5
1989	116 544	116 219	0	159	166	116 359	0	174	11
1990	124 825	124 295	0	194	336	124 578	0	233	14
1991	124 216	123 772	0	52	392	124 132	0	79	5
1992	123 415	122 328	0	8	1 079	123 362	0	48	5
1993	118 298	117 387	0	10	901	118 232	0	66	0
1994	112 479	112 311	0	1	167	112 472	0	3	4
1995	103 636	103 478	0	5	153	103 625	0	11	0
1996	95 508	95 423	0	1	84	95 505	0	3	0
1997	90 755	90 686	0	5	64	90 747	0	8	0
1998	89 789	89 781	0	0	8	89 782	0	0	7
1999	89 013	88 999	0	0	14	89 008	0	0	5
2000	91 322	91 313	0	0	9	91 317	0	0	5
2001	92 235	92 217	0	0	18	92 229	0	0	6
2002	96 765	96 737	0	0	28	96 750	0	0	15
2003	100 230	100 208	0	0	22	100 214	0	0	16
2004	102 053	102 029	0	0	24	102 038	0	0	15
2005	102 404	102 381	0	0	23	102 391	0	0	13
2006	106 817	106 804	0	0	13	106 816	0	0	1
2007	108 216	108 175	0	0	41	108 205	0	0	11
2008	109 999	109 913	0	0	86	109 991	0	0	8
2009	112 059	111 937	0	0	122	112 055	0	0	4
Total	8 151 121	7 932 479	11 897	11 087	195 658	7 986 442	12 168	10 699	141 812

Table 4D**Amount of data on index persons born in Sweden, by birth number and source for father's registration number and birth date**

Birth year	Total	Source father's registration no.			No data	Source father's birth date			No data
		TPR	Personal records	Register of births		TPR	Personal records	Register of births	
1932	81 569	26 262	171	.	55 136	31 189	218	.	50 162
1933	77 820	47 948	345	.	29 527	54 411	394	.	23 015
1934	77 975	57 638	369	.	19 968	64 757	416	.	12 802
1935	79 054	62 199	378	.	16 477	69 327	413	.	9 314
1936	82 244	66 944	370	.	14 930	73 690	408	.	8 146
1937	83 824	69 350	342	.	14 132	75 893	372	.	7 559
1938	87 563	73 520	330	.	13 713	79 905	359	.	7 299
1939	91 264	77 509	370	.	13 385	83 957	412	.	6 895
1940	90 061	77 617	363	.	12 081	83 365	399	.	6 297
1941	94 264	83 118	362	.	10 784	88 023	395	.	5 846
1942	108 803	97 418	396	.	10 989	102 527	427	.	5 849
1943	119 457	108 085	426	.	10 946	112 995	451	.	6 011
1944	127 504	116 193	450	.	10 861	121 072	482	.	5 950
1945	128 317	117 520	450	.	10 347	122 177	488	.	5 652
1946	126 836	117 891	360	.	8 585	121 724	383	.	4 729
1947	123 421	115 652	354	.	7 415	118 973	379	.	4 069
1948	121 488	114 730	260	.	6 498	117 541	273	.	3 674
1949	116 447	110 479	225	.	5 743	112 914	235	.	3 298
1950	110 989	105 830	161	.	4 998	107 845	168	.	2 976
1951	106 124	101 302	141	.	4 681	103 123	146	.	2 855
1952	106 416	102 265	158	.	3 993	103 725	165	.	2 526
1953	106 593	102 797	130	.	3 666	104 146	139	.	2 308
1954	101 981	98 579	107	.	3 295	99 803	109	.	2 069
1955	104 399	101 033	155	.	3 211	102 208	158	.	2 033
1956	105 209	102 083	138	.	2 988	103 176	139	.	1 894
1957	104 349	101 368	180	.	2 801	102 420	187	.	1 742
1958	103 245	100 287	177	.	2 781	101 301	176	.	1 768
1959	102 779	99 898	209	.	2 672	100 872	214	.	1 693
1960	100 419	97 532	248	.	2 639	98 497	257	.	1 665
1961	104 656	100 779	1 005	913	1 959	101 805	1 037	630	1 184
1962	107 081	103 282	977	838	1 984	104 271	1 005	609	1 196
1963	112 843	108 951	965	861	2 066	109 978	984	589	1 292
1964	122 536	118 483	978	878	2 197	119 596	1 007	596	1 337
1965	122 881	119 201	808	813	2 059	120 234	829	518	1 300
1966	122 977	119 535	761	786	1 895	120 480	775	498	1 224
1967	121 391	118 242	696	726	1 727	119 126	710	477	1 078
1968	113 201	110 879	0	732	1 590	111 483	0	742	976
1969	107 704	105 671	0	547	1 486	106 208	0	551	945
1970	110 256	108 331	0	476	1 449	108 851	0	486	919
1971	114 621	112 732	0	451	1 438	113 245	0	455	921
1972	112 507	110 759	0	384	1 364	111 225	0	392	890
1973	109 861	108 249	0	334	1 278	108 680	0	351	830
1974	110 108	108 655	0	332	1 121	109 060	0	341	707
1975	103 823	102 458	0	273	1 092	102 833	0	284	706
1976	98 515	97 238	0	235	1 042	97 639	0	249	627
1977	96 237	95 061	0	211	965	95 430	0	222	585
1978	93 450	92 324	0	183	943	92 665	0	190	595
1979	96 461	95 335	0	166	960	95 683	0	176	602
1980	97 313	96 276	0	129	908	96 652	0	136	525
1981	94 274	93 319	0	112	843	93 676	0	120	478

Table 4D (cont.)

Birth year	Total	Source father's registration no.			No data	Source father's birth date			No data
		TPR	Personal records	Register of births		TPR	Personal records	Register of births	
1982	93 159	92 222	0	97	840	92 563	0	105	491
1983	91 957	91 029	0	124	804	91 397	0	130	430
1984	94 110	93 224	0	94	792	93 631	0	103	376
1985	98 646	97 645	0	96	905	98 101	0	105	440
1986	102 114	101 022	0	82	1 010	101 502	0	96	516
1987	104 929	103 834	0	89	1 006	104 341	0	102	486
1988	112 518	111 364	0	97	1 057	111 890	0	111	517
1989	116 544	115 266	0	80	1 198	115 893	0	92	559
1990	124 825	123 218	0	106	1 501	124 046	0	137	642
1991	124 216	122 717	0	41	1 458	123 605	0	70	541
1992	123 415	121 271	0	16	2 128	122 803	0	47	565
1993	118 298	116 323	0	12	1 963	117 748	0	51	499
1994	112 479	111 346	0	6	1 127	112 058	0	14	407
1995	103 636	102 592	0	15	1 029	103 263	0	20	353
1996	95 508	94 601	0	10	897	95 169	0	17	322
1997	90 755	89 830	0	9	916	90 400	0	14	341
1998	89 789	88 952	0	0	837	89 473	0	0	316
1999	89 013	88 221	0	0	792	88 733	0	0	280
2000	91 322	90 474	0	0	848	91 030	0	0	292
2001	92 235	91 294	0	0	941	91 926	0	0	309
2002	96 765	95 792	0	0	973	96 409	0	0	356
2003	100 230	99 159	0	0	1 071	99 823	0	0	407
2004	102 053	100 881	0	0	1 172	101 622	0	0	431
2005	102 404	101 203	0	0	1 201	101 949	0	0	455
2006	106 817	105 448	0	0	1 369	106 221	0	0	596
2007	108 216	106 647	0	0	1 569	107 528	0	0	688
2008	109 999	107 927	0	0	2 072	109 042	0	0	957
2009	112 059	105 569	0	0	6 490	106 877	0	0	5 182
Total	8 151 121	7 747 878	14 315	11 354	377 574	7 889 419	15 109	9 826	236 767

Table 5A
Amount of data on foreign-born index persons, by birth year and source for own country of birth

Birth year	Total	Source for own country of birth			
		TPR	Personal record	Register of births	Population and Housing Census
1932	15 763	15 698	43	.	22
1933	15 666	15 607	42	.	17
1934	17 221	17 172	28	.	21
1935	17 893	17 836	31	.	26
1936	18 493	18 447	27	.	19
1937	19 780	19 727	30	.	23
1938	20 641	20 572	39	.	30
1939	21 840	21 783	30	.	27
1940	21 889	21 832	26	.	31
1941	23 623	23 562	33	.	28
1942	22 256	22 206	25	.	25
1943	23 769	23 722	26	.	21
1944	24 756	24 711	19	.	26
1945	26 301	26 265	12	.	24
1946	30 137	30 088	16	.	33
1947	31 723	31 679	9	.	35
1948	32 263	32 234	4	.	25
1949	31 903	31 867	2	.	33
1950	31 569	31 546	3	.	20
1951	30 640	30 627	3	.	9
1952	30 970	30 944	5	.	20
1953	30 868	30 844	7	.	15
1954	32 143	32 130	1	.	10
1955	32 299	32 292	4	.	3
1956	33 013	33 004	3	.	2
1957	33 008	32 998	5	.	5
1958	32 248	32 241	4	.	2
1959	33 188	33 179	5	.	3
1960	35 082	35 070	9	.	3
1961	34 023	34 012	9	0	2
1962	35 417	35 403	11	0	3
1963	35 964	35 953	6	2	3
1964	36 988	36 974	7	2	5
1965	37 008	36 998	5	2	3
1966	36 458	36 449	2	1	6
1967	36 634	36 625	0	0	9
1968	37 084	37 077	0	3	4
1969	35 897	35 894	0	1	2
1970	35 174	35 171	0	3	0
1971	33 633	33 633	0	0	0
1972	34 282	34 280	0	2	0
1973	33 476	33 476	0	0	0
1974	34 422	34 422	0	0	0
1975	34 372	34 372	0	0	0
1976	33 883	33 883	0	0	0
1977	33 338	33 338	0	0	0
1978	33 650	33 650	0	0	0
1979	33 207	33 207	0	0	0
1980	34 127	34 126	0	1	0
1981	32 057	32 057	0	0	0

Table 5A (cont.)

Birth year	Total	Source for own country of birth			
		TPR	Personal record	Register of births	Population and Housing Census
1982	32 226	32 226	0	0	0
1983	30 855	30 855	0	0	0
1984	29 332	29 332	0	0	0
1985	27 014	27 014	0	0	0
1986	24 423	24 423	0	0	0
1987	21 176	21 176	0	0	0
1988	19 192	19 192	0	0	0
1989	17 310	17 310	0	0	0
1990	16 080	16 080	0	0	0
1991	14 739	14 739	0	0	0
1992	13 128	13 128	0	0	0
1993	11 724	11 724	0	0	0
1994	11 283	11 283	0	0	0
1995	10 865	10 865	0	0	0
1996	10 534	10 534	0	0	0
1997	10 378	10 378	0	0	0
1998	9 801	9 801	0	0	0
1999	9 387	9 387	0	0	0
2000	9 127	9 127	0	0	0
2001	8 392	8 392	0	0	0
2002	7 823	7 823	0	0	0
2003	6 987	6 987	0	0	0
2004	6 647	6 647	0	0	0
2005	5 914	5 914	0	0	0
2006	5 017	5 017	0	0	0
2007	3 764	3 764	0	0	0
2008	2 187	2 187	0	0	0
2009	605	605	0	0	0
Total	1 877 949	1 876 793	531	30	595

Table 5B**Amount of data on foreign-born index persons, by birth year and source for parent's country of birth**

Birth year	Total	Source mother's country of birth				No data	Source father's country of birth				No data
		TPR	Personal records	Register of births	PHC		TPR	Personal records	Register of births	PHC	
1932	15 763	466	0	0	6	15 291	289	2	.	5	15 467
1933	15 666	735	2	0	8	14 921	499	6	.	7	15 154
1934	17 221	899	4	0	4	16 314	616	5	.	7	16 593
1935	17 893	1 034	5	0	17	16 837	733	8	.	10	17 142
1936	18 493	1 159	3	0	11	17 320	800	5	.	12	17 676
1937	19 780	1 292	5	0	21	18 462	912	4	.	20	18 844
1938	20 641	1 421	3	0	10	19 207	957	10	.	14	19 660
1939	21 840	1 605	6	0	19	20 210	1 071	7	.	18	20 744
1940	21 889	1 760	4	0	29	20 096	1 136	13	.	23	20 717
1941	23 623	2 101	5	0	33	21 484	1 417	8	.	29	22 169
1942	22 256	1 998	5	0	29	20 224	1 368	5	.	40	20 843
1943	23 769	2 200	2	0	34	21 533	1 553	9	.	39	22 168
1944	24 756	2 279	5	0	36	22 436	1 621	7	.	49	23 079
1945	26 301	2 388	2	0	45	23 866	1 714	4	.	52	24 531
1946	30 137	2 965	6	0	46	27 120	2 216	11	.	58	27 852
1947	31 723	3 213	10	0	40	28 460	2 569	20	.	50	29 084
1948	32 263	3 313	7	0	28	28 915	2 589	14	.	44	29 616
1949	31 903	3 458	8	0	37	28 400	2 802	15	.	46	29 040
1950	31 569	3 555	11	0	19	27 984	2 925	8	.	27	28 609
1951	30 640	3 749	3	0	17	26 871	3 053	10	.	24	27 553
1952	30 970	3 958	14	0	21	26 977	3 270	14	.	27	27 659
1953	30 868	4 364	13	0	11	26 480	3 595	13	.	20	27 240
1954	32 143	4 876	11	0	17	27 239	4 110	9	.	26	27 998
1955	32 299	5 077	16	0	12	27 194	4 250	7	.	22	28 020
1956	33 013	5 236	6	0	17	27 754	4 455	11	.	18	28 529
1957	33 008	5 538	12	0	14	27 444	4 700	13	.	20	28 275
1958	32 248	5 366	14	0	2	26 866	4 492	7	.	12	27 737
1959	33 188	6 263	8	0	5	26 912	5 249	11	.	11	27 917
1960	35 082	6 386	11	0	3	28 682	5 381	11	.	11	29 679
1961	34 023	6 694	13	0	7	27 309	5 650	13	.	5	28 355
1962	35 417	7 078	13	0	8	28 318	5 905	6	.	6	29 500
1963	35 964	7 708	5	0	6	28 245	6 399	9	.	6	29 550
1964	36 988	8 041	4	0	8	28 935	6 705	6	.	12	30 265
1965	37 008	7 897	13	0	7	29 091	6 599	8	.	3	30 398
1966	36 458	7 897	9	0	9	28 543	6 493	9	.	12	29 944
1967	36 634	8 114	11	0	10	28 499	6 631	5	.	9	29 989
1968	37 084	8 448	1	0	6	28 629	6 956	1	.	11	30 116
1969	35 897	7 754	0	1	14	28 128	6 334	0	.	8	29 555
1970	35 174	6 952	1	0	6	28 215	5 579	0	.	6	29 589
1971	33 633	6 766	0	0	2	26 865	5 261	0	.	1	28 371
1972	34 282	7 456	0	0	4	26 822	5 923	1	.	7	28 351
1973	33 476	7 966	0	0	8	25 502	6 414	0	.	5	27 057
1974	34 422	8 334	0	0	1	26 087	6 809	0	.	0	27 613
1975	34 372	8 398	0	0	1	25 973	6 865	0	.	0	27 507
1976	33 883	8 220	0	1	0	25 662	6 618	0	.	0	27 265
1977	33 338	8 253	0	0	0	25 085	6 751	0	.	0	26 587
1978	33 650	8 388	0	1	0	25 261	6 903	0	.	0	26 747
1979	33 207	8 858	0	0	0	24 349	7 286	0	.	2	25 919
1980	34 127	9 430	0	0	1	24 696	7 785	0	.	0	26 342
1981	32 057	9 692	0	0	0	22 365	8 050	0	.	1	24 006

Table 5B (cont.)

Birth year	Total	Source mother's country of birth				No data	Source father's country of birth				No data
		TPR	Personal records	Register of births	PHC		TPR	Personal records	Register of births	PHC	
1982	32 226	10 469	0	0	1	21 756	8 710	0	.	0	23 516
1983	30 855	10 881	0	0	0	19 974	9 093	0	.	2	21 760
1984	29 332	11 409	0	0	0	17 923	9 603	0	.	0	19 729
1985	27 014	11 702	0	0	0	15 312	9 779	0	.	0	17 235
1986	24 423	11 819	0	1	0	12 603	9 914	0	.	2	14 506
1987	21 176	11 593	0	1	0	9 582	9 705	0	.	0	11 471
1988	19 192	12 055	0	0	0	7 137	10 018	0	.	0	9 174
1989	17 310	11 776	0	1	0	5 533	9 716	0	.	0	7 593
1990	16 080	11 792	0	0	0	4 288	9 574	0	.	0	6 506
1991	14 739	11 562	0	0	0	3 177	9 265	1	.	0	5 473
1992	13 128	10 622	0	1	0	2 505	8 450	0	.	0	4 677
1993	11 724	9 656	0	0	0	2 068	7 297	1	.	0	4 426
1994	11 283	9 574	0	0	0	1 709	7 374	0	.	0	3 909
1995	10 865	9 385	0	0	0	1 480	7 100	1	.	0	3 764
1996	10 534	9 215	0	0	0	1 319	6 988	1	.	0	3 545
1997	10 378	9 029	0	0	0	1 349	6 987	0	.	0	3 391
1998	9 801	8 522	0	0	0	1 279	6 628	1	.	0	3 172
1999	9 387	8 143	0	0	0	1 244	6 460	0	.	0	2 927
2000	9 127	7 932	0	0	0	1 195	6 392	0	.	0	2 735
2001	8 392	7 178	0	0	0	1 214	5 747	0	.	0	2 645
2002	7 823	6 579	0	0	0	1 244	5 417	0	.	0	2 406
2003	6 987	5 783	0	0	0	1 204	4 791	0	.	0	2 196
2004	6 647	5 677	0	0	0	970	4 822	0	.	0	1 825
2005	5 914	5 058	0	0	0	856	4 446	0	.	0	1 468
2006	5 017	4 519	0	0	0	498	3 925	0	.	0	1 092
2007	3 764	3 352	0	0	0	412	2 993	1	.	0	770
2008	2 187	1 854	0	0	0	333	1 681	0	.	0	506
2009	605	520	0	0	0	85	469	0	.	0	136
Total	1 877 949	494 654	271	7	690	1 382 327	401 602	331	.	839	1 475 174

*) There is no information about the father's country of birth in the Register of births.

Table 5C**Amount of data on foreign-born index persons, by birth year and source for mother's registration number and birth date**

Birth year	Total	Source mother's registration number			No data	Source mother's birth date			No data
		TPR	Personal records	Register of births		TPR	Personal records	Register of births	
1932	15 763	502	9	.	15 252	605	12	.	15 146
1933	15 666	794	10	.	14 862	942	12	.	14 712
1934	17 221	964	18	.	16 239	1 159	19	.	16 043
1935	17 893	1 118	28	.	16 747	1 373	29	.	16 491
1936	18 493	1 247	16	.	17 230	1 522	18	.	16 953
1937	19 780	1 390	24	.	18 366	1 701	25	.	18 054
1938	20 641	1 507	23	.	19 111	1 756	26	.	18 859
1939	21 840	1 691	27	.	20 122	2 041	32	.	19 767
1940	21 889	1 863	19	.	20 007	2 147	22	.	19 720
1941	23 623	2 225	33	.	21 365	2 502	34	.	21 087
1942	22 256	2 108	18	.	20 130	2 299	21	.	19 936
1943	23 769	2 310	38	.	21 421	2 471	38	.	21 260
1944	24 756	2 392	36	.	22 328	2 557	42	.	22 157
1945	26 301	2 510	34	.	23 757	2 668	39	.	23 594
1946	30 137	3 075	74	.	26 988	3 275	82	.	26 780
1947	31 723	3 272	125	.	28 326	3 479	165	.	28 079
1948	32 263	3 353	135	.	28 775	3 570	151	.	28 542
1949	31 903	3 522	136	.	28 245	3 768	142	.	27 993
1950	31 569	3 600	117	.	27 852	3 968	121	.	27 480
1951	30 640	3 765	97	.	26 778	4 209	97	.	26 334
1952	30 970	3 985	112	.	26 873	4 442	112	.	26 416
1953	30 868	4 356	132	.	26 380	4 826	133	.	25 909
1954	32 143	4 867	125	.	27 151	5 377	126	.	26 640
1955	32 299	5 069	127	.	27 103	5 626	127	.	26 546
1956	33 013	5 202	146	.	27 665	5 724	147	.	27 142
1957	33 008	5 494	143	.	27 371	5 991	143	.	26 874
1958	32 248	5 341	107	.	26 800	5 825	108	.	26 315
1959	33 188	6 223	127	.	26 838	6 681	127	.	26 380
1960	35 082	6 320	146	.	28 616	6 777	146	.	28 159
1961	34 023	6 651	83	50	27 239	7 134	82	50	26 757
1962	35 417	6 958	107	98	28 254	7 370	106	98	27 843
1963	35 964	7 578	89	97	28 200	7 936	90	95	27 843
1964	36 988	7 906	106	91	28 885	8 270	106	90	28 522
1965	37 008	7 756	82	112	29 058	8 103	82	112	28 711
1966	36 458	7 755	83	114	28 506	8 088	84	114	28 172
1967	36 634	7 961	94	105	28 474	8 282	94	105	28 153
1968	37 084	8 347	0	142	28 595	8 683	0	145	28 256
1969	35 897	7 674	0	108	28 115	7 992	0	111	27 794
1970	35 174	6 890	0	79	28 205	7 200	0	81	27 893
1971	33 633	6 704	0	71	26 858	7 032	0	71	26 530
1972	34 282	7 413	0	55	26 814	7 731	0	56	26 495
1973	33 476	7 928	0	54	25 494	8 255	0	54	25 167
1974	34 422	8 338	0	5	26 079	8 681	0	5	25 736
1975	34 372	8 403	0	1	25 968	8 716	0	1	25 655
1976	33 883	8 223	0	1	25 659	8 536	0	1	25 346
1977	33 338	8 256	0	1	25 081	8 558	0	1	24 779
1978	33 650	8 393	0	0	25 257	8 722	0	0	24 928
1979	33 207	8 866	0	0	24 341	9 124	0	0	24 083
1980	34 127	9 436	0	1	24 690	9 749	0	3	24 375
1981	32 057	9 696	0	0	22 361	9 997	0	0	22 060

Table 5C (cont.)

Birth year	Total	Source mother's registration number			No data	Source mother's birth date			No data
		TPR	Perso- nal re- cords	Regis- ter of births		TPR	Perso- nal re- cords	Regis- ter of births	
1982	32 226	10 477	0	1	21 748	10 811	0	1	21 414
1983	30 855	10 883	0	0	19 972	11 184	0	0	19 671
1984	29 332	11 412	0	0	17 920	11 777	0	0	17 555
1985	27 014	11 704	0	0	15 310	12 079	0	0	14 935
1986	24 423	11 822	0	1	12 600	12 169	0	1	12 253
1987	21 176	11 598	0	1	9 577	11 966	0	1	9 209
1988	19 192	12 058	0	0	7 134	12 430	0	0	6 762
1989	17 310	11 780	0	1	5 529	12 212	0	1	5 097
1990	16 080	11 795	0	1	4 284	12 283	0	1	3 796
1991	14 739	11 571	0	0	3 168	12 083	0	0	2 656
1992	13 128	10 628	0	0	2 500	11 140	0	0	1 988
1993	11 724	9 663	0	0	2 061	10 112	0	0	1 612
1994	11 283	9 588	0	0	1 695	9 976	0	0	1 307
1995	10 865	9 395	0	0	1 470	9 710	0	0	1 155
1996	10 534	9 222	0	0	1 312	9 522	0	0	1 012
1997	10 378	9 032	0	0	1 346	9 304	0	0	1 074
1998	9 801	8 530	0	0	1 271	8 741	0	0	1 060
1999	9 387	8 146	0	0	1 241	8 344	0	0	1 043
2000	9 127	7 937	0	0	1 190	8 142	0	0	985
2001	8 392	7 180	0	0	1 212	7 329	0	0	1 063
2002	7 823	6 585	0	0	1 238	6 734	0	0	1 089
2003	6 987	5 787	0	0	1 200	5 896	0	0	1 091
2004	6 647	5 681	0	0	966	5 775	0	0	872
2005	5 914	5 064	0	0	850	5 148	0	0	766
2006	5 017	4 521	0	0	496	4 582	0	0	435
2007	3 764	3 353	0	0	411	3 405	0	0	359
2008	2 187	1 855	0	0	332	1 896	0	0	291
2009	605	520	0	0	85	538	0	0	67
Total	1 877 949	494 984	2 826	1 190	1 378 949	518 728	2 940	1 198	1 355 083

Table 5D**Amount of data on foreign-born index persons, by birth year and source for father's registration number and birth date**

Birth year	Total	Source father's registration number			No data	Source father's birth date			No data
		TPR	Personal records	Register of births		TPR	Personal records	Register of births	
1932	15 763	357	10	0	15 396	507	12	0	15 244
1933	15 666	596	11	0	15 059	812	12	0	14 842
1934	17 221	699	18	0	16 504	970	20	0	16 231
1935	17 893	823	31	0	17 039	1 142	32	0	16 719
1936	18 493	911	17	0	17 565	1 296	20	0	17 177
1937	19 780	1 012	25	0	18 743	1 428	26	0	18 326
1938	20 641	1 058	26	0	19 557	1 463	31	0	19 147
1939	21 840	1 192	30	0	20 618	1 707	34	0	20 099
1940	21 889	1 278	18	0	20 593	1 735	22	0	20 132
1941	23 623	1 551	27	0	22 045	2 056	33	0	21 534
1942	22 256	1 532	20	0	20 704	1 919	25	0	20 312
1943	23 769	1 692	32	0	22 045	2 091	37	0	21 641
1944	24 756	1 760	36	0	22 960	2 121	41	0	22 594
1945	26 301	1 884	35	0	24 382	2 270	41	0	23 990
1946	30 137	2 363	71	0	27 703	2 797	83	0	27 257
1947	31 723	2 663	111	0	28 949	3 081	157	0	28 485
1948	32 263	2 702	119	0	29 442	3 146	150	0	28 967
1949	31 903	2 910	123	0	28 870	3 382	130	0	28 391
1950	31 569	2 993	109	0	28 467	3 583	116	0	27 870
1951	30 640	3 104	90	0	27 446	3 814	91	0	26 735
1952	30 970	3 323	102	0	27 545	4 029	105	0	26 836
1953	30 868	3 603	127	0	27 138	4 363	128	0	26 377
1954	32 143	4 137	110	0	27 896	4 949	113	0	27 081
1955	32 299	4 277	118	0	27 904	5 154	121	0	27 024
1956	33 013	4 460	132	0	28 421	5 319	133	0	27 561
1957	33 008	4 693	140	0	28 175	5 548	144	0	27 316
1958	32 248	4 516	97	0	27 635	5 384	102	0	26 762
1959	33 188	5 263	120	0	27 805	6 183	124	0	26 881
1960	35 082	5 391	128	0	29 563	6 265	131	0	28 686
1961	34 023	5 649	84	44	28 246	6 611	84	44	27 284
1962	35 417	5 855	92	83	29 387	6 830	97	83	28 407
1963	35 964	6 307	87	88	29 482	7 312	89	87	28 476
1964	36 988	6 616	90	84	30 198	7 649	94	81	29 164
1965	37 008	6 502	77	99	30 330	7 527	81	95	29 305
1966	36 458	6 408	67	103	29 880	7 447	73	101	28 837
1967	36 634	6 526	83	85	29 940	7 640	83	84	28 827
1968	37 084	6 910	0	120	30 054	8 016	0	128	28 940
1969	35 897	6 291	0	89	29 517	7 333	0	94	28 470
1970	35 174	5 564	0	62	29 548	6 616	0	63	28 495
1971	33 633	5 250	0	49	28 334	6 311	0	50	27 272
1972	34 282	5 918	0	36	28 328	6 973	0	38	27 271
1973	33 476	6 422	0	29	27 025	7 477	0	30	25 969
1974	34 422	6 828	0	4	27 590	7 908	0	4	26 510
1975	34 372	6 878	0	1	27 493	7 988	0	1	26 383
1976	33 883	6 637	0	0	27 246	7 723	0	0	26 160
1977	33 338	6 766	0	1	26 571	7 805	0	1	25 532
1978	33 650	6 917	0	0	26 733	7 979	0	0	25 671
1979	33 207	7 305	0	0	25 902	8 360	0	0	24 847
1980	34 127	7 799	0	0	26 328	8 943	0	2	25 182
1981	32 057	8 061	0	0	23 996	9 195	0	0	22 862

Table 5D (cont.)

Birth year	Total	Source father's registration number			No data	Source father's birth date			No data
		TPR	Personal records	Register of births		TPR	Personal records	Register of births	
1982	32 226	8 717	0	0	23 509	9 935	0	1	22 290
1983	30 855	9 110	0	0	21 745	10 348	0	0	20 507
1984	29 332	9 614	0	0	19 718	10 956	0	0	18 376
1985	27 014	9 793	0	0	17 221	11 172	0	0	15 842
1986	24 423	9 921	0	1	14 501	11 320	0	1	13 102
1987	21 176	9 711	0	0	11 465	11 103	0	0	10 073
1988	19 192	10 025	0	0	9 167	11 601	0	0	7 591
1989	17 310	9 730	0	0	7 580	11 349	0	0	5 961
1990	16 080	9 584	0	1	6 495	11 390	0	1	4 689
1991	14 739	9 272	0	0	5 467	11 158	0	0	3 581
1992	13 128	8 459	0	0	4 669	10 255	0	0	2 873
1993	11 724	7 303	0	0	4 421	9 130	0	0	2 594
1994	11 283	7 385	0	0	3 898	9 067	0	0	2 216
1995	10 865	7 107	0	0	3 758	8 812	0	0	2 053
1996	10 534	6 993	0	0	3 541	8 582	0	0	1 952
1997	10 378	6 997	0	0	3 381	8 470	0	0	1 908
1998	9 801	6 633	0	0	3 168	7 998	0	0	1 803
1999	9 387	6 464	0	0	2 923	7 679	0	0	1 708
2000	9 127	6 392	0	0	2 735	7 511	0	0	1 616
2001	8 392	5 748	0	0	2 644	6 767	0	0	1 625
2002	7 823	5 423	0	0	2 400	6 294	0	0	1 529
2003	6 987	4 792	0	0	2 195	5 474	0	0	1 513
2004	6 647	4 828	0	0	1 819	5 442	0	0	1 205
2005	5 914	4 451	0	0	1 463	4 906	0	0	1 008
2006	5 017	3 929	0	0	1 088	4 326	0	0	691
2007	3 764	2 997	0	0	767	3 255	0	0	509
2008	2 187	1 681	0	0	506	1 810	0	0	377
2009	605	469	0	0	136	516	0	0	89
Total	1 877 949	403 680	2 613	979	1 470 677	474 783	2 815	989	1 399 362

Table 6
Number of registration number thought to be re-used, by
birth year of index person

Birth year	Index persons	Biological mother	Biological father
1932	84	50	45
1933	78	62	115
1934	85	82	117
1935	71	70	126
1936	83	67	131
1937	102	73	124
1938	100	77	119
1939	99	76	105
1940	113	68	113
1941	124	59	113
1942	112	76	122
1943	138	83	131
1944	148	88	134
1945	159	74	137
1946	252	79	110
1947	367	73	111
1948	362	69	110
1949	368	50	93
1950	326	61	93
1951	320	54	79
1952	340	53	79
1953	339	53	75
1954	294	46	82
1955	273	52	108
1956	287	47	61
1957	288	55	75
1958	247	53	74
1959	277	55	70
1960	306	57	72
1961	229	59	84
1962	252	61	88
1963	242	62	91
1964	257	61	80
1965	246	71	103
1966	227	86	92
1967	235	80	88
1968	236	78	113
1969	199	79	114
1970	189	95	95
1971	152	100	122
1972	171	123	125
1973	147	118	165
1974	60	123	172
1975	61	130	171
1976	81	139	180
1977	68	128	174
1978	66	147	195
1979	53	135	195
1980	76	156	197
1981	61	164	215

Table 6 (cont.)

Birth year	Index persons	Biological mother	Biological father
1982	45	167	235
1983	45	184	231
1984	48	191	262
1985	42	190	253
1986	53	199	259
1987	65	204	284
1988	47	206	265
1989	61	233	267
1990	46	185	254
1991	63	205	288
1992	53	202	236
1993	42	198	277
1994	28	169	236
1995	45	178	258
1996	34	164	221
1997	39	165	215
1998	33	129	188
1999	35	131	210
2000	36	107	195
2001	28	109	172
2002	23	99	155
2003	10	87	140
2004	10	85	168
2005	10	71	137
2006	8	63	156
2007	8	67	147
2008	1	74	137
2009	0	63	98
Total	10 408	8 182	11 727

Table 7
Average number of children per mother, by birth cohort and country of birth

Birth year	Total number of mothers	Mothers born in Sweden	Foreign-born mothers	Unknown country of birth of mother
1874	1	0,00	0,00	1,00
1875	2	0,00	0,00	1,00
1876	1	0,00	0,00	1,00
1877	2	0,00	0,00	1,00
1878	1	0,00	0,00	1,00
1879	2	1,00	0,00	1,00
1880	5	1,00	0,00	1,00
1881	1	0,00	0,00	1,00
1882	2	1,00	0,00	1,00
1883	9	1,00	0,00	1,17
1884	16	1,00	0,00	1,00
1885	54	1,03	0,00	1,00
1886	137	1,05	0,00	1,00
1887	270	1,03	1,00	1,01
1888	545	1,04	1,06	1,06
1889	919	1,06	1,06	1,04
1890	1 497	1,10	1,08	1,09
1891	2 174	1,13	1,07	1,12
1892	2 763	1,17	1,13	1,18
1893	3 991	1,22	1,22	1,21
1894	5 026	1,27	1,20	1,23
1895	6 219	1,32	1,30	1,28
1896	7 523	1,37	1,38	1,32
1897	8 843	1,42	1,44	1,38
1898	10 615	1,47	1,54	1,44
1899	12 102	1,52	1,47	1,45
1900	14 470	1,59	1,64	1,49
1901	16 640	1,64	1,64	1,59
1902	18 981	1,70	1,68	1,64
1903	21 063	1,75	1,81	1,63
1904	23 633	1,82	1,91	1,67
1905	26 307	1,88	1,87	1,70
1906	28 796	1,95	1,95	1,74
1907	31 341	2,01	1,94	1,80
1908	33 688	2,07	2,05	1,85
1909	36 583	2,12	2,01	1,83
1910	37 133	2,18	2,12	1,87
1911	38 660	2,22	2,10	1,86
1912	40 710	2,27	2,21	1,93
1913	41 285	2,30	2,19	1,86
1914	42 291	2,32	2,22	1,87
1915	41 217	2,33	2,25	1,89
1916	41 511	2,32	2,28	1,94
1917	42 474	2,33	2,27	1,83
1918	42 320	2,35	2,32	1,76
1919	42 264	2,35	2,24	1,79
1920	51 719	2,32	2,31	1,74
1921	48 655	2,33	2,30	1,69
1922	45 739	2,34	2,28	1,69
1923	45 119	2,34	2,35	1,70
1924	44 370	2,33	2,34	1,64
1925	43 899	2,35	2,35	1,62
1926	42 743	2,35	2,39	1,63
1927	41 821	2,37	2,40	1,63
1928	42 651	2,39	2,43	1,63

Table 7 (cont.)

Birth year	Total number of mothers	Mothers born in Sweden	Foreign-born mothers	Unknown country of birth of mother
1929	40 998	2,38	2,48	1,59
1930	42 072	2,38	2,45	1,57
1931	41 283	2,40	2,47	1,52
1932	41 043	2,41	2,47	1,63
1933	39 266	2,40	2,46	1,62
1934	39 910	2,42	2,41	1,59
1935	40 168	2,38	2,43	1,66
1936	42 043	2,37	2,39	1,59
1937	42 746	2,36	2,37	1,59
1938	44 706	2,33	2,35	1,66
1939	46 445	2,32	2,33	1,62
1940	45 496	2,31	2,34	1,57
1941	47 980	2,28	2,29	1,48
1942	53 084	2,26	2,25	1,51
1943	58 332	2,25	2,21	1,45
1944	61 898	2,24	2,20	1,38
1945	62 938	2,21	2,19	1,29
1946	63 815	2,23	2,14	1,32
1947	62 970	2,23	2,12	1,25
1948	62 380	2,24	2,13	1,23
1949	59 926	2,25	2,13	1,19
1950	57 014	2,26	2,17	1,13
1951	54 507	2,27	2,17	1,10
1952	54 504	2,28	2,20	1,06
1953	54 367	2,31	2,22	1,33
1954	52 616	2,32	2,28	1,18
1955	53 542	2,33	2,26	1,59
1956	53 594	2,34	2,29	1,73
1957	53 880	2,36	2,29	1,44
1958	52 588	2,36	2,32	1,53
1959	52 588	2,35	2,34	1,62
1960	52 608	2,35	2,40	1,79
1961	52 648	2,33	2,34	1,11
1962	54 382	2,33	2,38	1,29
1963	56 679	2,31	2,36	1,78
1964	61 254	2,29	2,37	1,17
1965	61 188	2,27	2,39	1,58
1966	60 827	2,26	2,37	1,62
1967	60 117	2,24	2,35	1,43
1968	57 330	2,22	2,32	1,50
1969	54 238	2,19	2,33	2,45
1970	54 845	2,18	2,31	2,00
1971	54 847	2,14	2,23	3,25
1972	53 593	2,11	2,25	1,75
1973	51 139	2,05	2,17	1,50
1974	50 062	1,99	2,13	2,57
1975	45 893	1,93	2,06	1,64
1976	41 438	1,85	2,00	2,69
1977	38 026	1,77	1,94	2,50
1978	34 168	1,70	1,86	2,50
1979	31 370	1,63	1,79	2,00
1980	27 715	1,58	1,76	2,14
1981	22 952	1,52	1,66	2,87
1982	19 219	1,48	1,61	1,50
1983	15 977	1,43	1,55	0,00

Table 7 (cont.)

Birth year	Total number of mothers	Mothers born in Sweden	Foreign-born mothers	Unknown country of birth of mother
1984	12 889	1,36	1,48	1,40
1985	10 588	1,32	1,43	1,50
1986	8 521	1,24	1,38	1,50
1987	6 048	1,18	1,28	1,33
1988	4 254	1,13	1,19	0,00
1989	2 516	1,09	1,17	1,25
1990	1 295	1,06	1,12	0,00
1991	594	1,03	1,12	0,00
1992	243	1,03	1,10	0,00
1993	77	1,00	1,04	0,00
1994	13	1,00	1,00	0,00
1995	2	1,00	1,00	0,00
1996	1	0,00	1,00	0,00
Total	3 869 058	2,20	2,21	1,64

Table 8
Average number of children per father, by birth cohort and country of birth

Birth year	Total number of fathers	Fathers born in Sweden	Foreign-born fathers	Unknown country of birth of father
1854	1	0,00	0,00	1,00
1857	3	0,00	0,00	1,00
1859	2	0,00	0,00	1,00
1860	1	0,00	0,00	1,00
1861	1	0,00	0,00	1,00
1862	7	0,00	0,00	1,00
1863	3	0,00	0,00	1,67
1864	6	0,00	0,00	1,00
1865	14	0,00	0,00	1,29
1866	11	0,00	0,00	1,09
1867	19	1,50	0,00	1,18
1868	23	2,67	0,00	1,05
1869	39	1,10	0,00	1,28
1870	52	1,54	0,00	1,54
1871	66	2,00	2,00	1,42
1872	86	1,28	0,00	1,31
1873	102	1,22	0,00	1,23
1874	145	1,39	1,00	1,29
1875	194	1,65	1,00	1,40
1876	220	1,34	1,00	1,41
1877	331	1,39	1,00	1,47
1878	385	1,43	0,00	1,47
1879	497	1,46	1,50	1,47
1880	614	1,46	1,00	1,42
1881	780	1,42	1,43	1,37
1882	968	1,44	1,50	1,39
1883	1 193	1,51	1,18	1,38
1884	1 564	1,49	1,07	1,45
1885	1 887	1,47	1,41	1,43
1886	2 416	1,51	1,79	1,39
1887	2 951	1,46	1,54	1,41
1888	3 518	1,48	1,51	1,42
1889	4 077	1,50	1,41	1,47
1890	4 899	1,51	1,38	1,50
1891	5 951	1,59	1,48	1,48
1892	6 897	1,62	1,92	1,58
1893	8 224	1,62	1,53	1,49
1894	9 407	1,63	1,61	1,56
1895	11 166	1,68	1,52	1,57
1896	12 649	1,72	1,67	1,62
1897	14 330	1,75	1,72	1,59
1898	16 344	1,81	1,72	1,67
1899	17 900	1,84	1,77	1,70
1900	20 589	1,89	1,88	1,72
1901	22 841	1,94	1,86	1,77
1902	25 021	1,98	1,94	1,79
1903	26 268	2,04	1,91	1,83
1904	28 696	2,08	2,03	1,83
1905	30 554	2,14	2,12	1,90
1906	33 120	2,17	2,19	1,89
1907	34 725	2,19	2,11	1,90
1908	36 896	2,24	2,12	1,94
1909	39 273	2,26	2,21	1,90
1910	39 410	2,29	2,19	1,94
1911	39 819	2,28	2,22	1,90

Table 8 (cont.)

Birth year	Total number of fathers	Fathers born in Sweden	Foreign-born fathers	Unknown country of birth of father
1912	41 054	2,30	2,19	1,94
1913	41 145	2,30	2,27	1,94
1914	40 975	2,32	2,21	1,90
1915	39 675	2,31	2,25	1,86
1916	39 999	2,32	2,33	1,87
1917	40 981	2,30	2,34	1,79
1918	40 732	2,31	2,36	1,71
1919	40 655	2,29	2,34	1,75
1920	49 157	2,30	2,38	1,72
1921	46 039	2,30	2,40	1,74
1922	42 683	2,31	2,40	1,66
1923	42 833	2,33	2,44	1,71
1924	41 758	2,34	2,42	1,65
1925	41 418	2,35	2,50	1,68
1926	40 184	2,37	2,44	1,64
1927	39 362	2,38	2,47	1,63
1928	40 075	2,38	2,48	1,57
1929	38 682	2,40	2,48	1,62
1930	39 672	2,41	2,51	1,64
1931	39 155	2,41	2,48	1,62
1932	39 150	2,40	2,46	1,63
1933	37 984	2,40	2,48	1,59
1934	38 610	2,39	2,44	1,54
1935	39 815	2,36	2,44	1,60
1936	41 178	2,37	2,36	1,55
1937	42 673	2,35	2,34	1,57
1938	44 591	2,34	2,33	1,52
1939	46 475	2,31	2,36	1,55
1940	46 086	2,30	2,33	1,44
1941	48 281	2,29	2,27	1,46
1942	54 337	2,29	2,29	1,38
1943	58 337	2,28	2,24	1,41
1944	61 840	2,26	2,29	1,42
1945	62 285	2,27	2,29	1,25
1946	62 181	2,28	2,25	1,30
1947	60 938	2,29	2,29	1,29
1948	59 681	2,30	2,28	1,30
1949	57 051	2,31	2,32	1,23
1950	54 852	2,32	2,40	1,52
1951	51 583	2,34	2,38	1,30
1952	51 882	2,34	2,44	1,43
1953	51 875	2,34	2,49	1,33
1954	50 498	2,34	2,49	1,50
1955	51 007	2,34	2,47	1,45
1956	51 877	2,34	2,54	1,83
1957	50 865	2,35	2,51	1,44
1958	50 202	2,32	2,50	1,38
1959	50 313	2,31	2,51	1,40
1960	49 278	2,29	2,53	1,47
1961	49 939	2,28	2,45	1,35
1962	51 635	2,26	2,47	1,50
1963	54 235	2,24	2,43	2,07
1964	57 687	2,22	2,43	1,45
1965	57 299	2,20	2,41	1,29
1966	56 637	2,16	2,38	1,53

Table 8 (cont.)

Birth year	Total number of fathers	Fathers born in Sweden	Foreign-born fathers	Unknown country of birth of father
1967	55 423	2,14	2,33	1,35
1968	51 319	2,11	2,31	1,59
1969	48 414	2,08	2,26	1,75
1970	47 353	2,04	2,19	1,21
1971	47 833	2,00	2,12	1,82
1972	45 829	1,95	2,07	2,20
1973	43 230	1,88	1,97	1,70
1974	41 429	1,83	1,91	1,22
1975	37 055	1,75	1,86	2,29
1976	32 437	1,69	1,75	2,29
1977	28 852	1,62	1,70	1,89
1978	24 872	1,55	1,63	1,25
1979	21 521	1,48	1,58	1,87
1980	18 355	1,43	1,52	1,33
1981	14 157	1,38	1,46	0,00
1982	11 275	1,34	1,42	1,50
1983	8 567	1,29	1,36	1,00
1984	6 459	1,25	1,33	1,00
1985	4 974	1,21	1,28	0,00
1986	3 359	1,17	1,22	0,00
1987	2 104	1,12	1,22	1,00
1988	1 422	1,08	1,13	1,00
1989	716	1,05	1,07	0,00
1990	340	1,03	1,11	0,00
1991	146	1,02	1,06	0,00
1992	64	1,00	1,00	0,00
1993	15	1,00	1,00	0,00
1994	2	1,00	1,00	0,00
1995	1	1,00	0,00	0,00
Total	3 724 069	2,20	2,28	1,70

Table 9
Number of index persons where Population and Housing Census mother and grandmothers are in agreement, broken down by Population and Housing Census year and age group

Year of Population and Housing Census	Age group	Number of index persons where PHC-mother and biological mother <i>not</i> agree	Of which – number of index persons where PHC-mother and grandmother agree	
			Number	Share
60	0–6	29 367	14 094	0,48
	7–12	20 424	1 379	0,07
	13–16	20 431	3	0,00
	17–20	13 891	0	0,00
	21–	3 924	0	0,00
	Total	88 037	15 476	0,18
65	0–6	32 512	21 193	0,65
	7–12	16 234	3 931	0,24
	13–16	15 219	677	0,04
	17–20	14 533	8	0,00
	21–	6 027	0	0,00
	Total	84 525	25 809	0,31
70	0–6	19 737	13 507	0,68
	7–12	12 737	4 572	0,36
	13–16	11 088	2 000	0,18
	17–20	9 654	725	0,08
	21–	6 048	22	0,00
	Total	59 264	20 826	0,35
75	0–6	9 348	5 532	0,59
	7–12	12 295	3 794	0,31
	13–16	10 701	2 245	0,21
	17–20	6 660	858	0,13
	21–	3 556	134	0,04
	Total	42 560	12 563	0,30
80	0–6	12 170	5 665	0,47
	7–12	15 422	4 053	0,26
	13–16	15 159	3 187	0,21
	17–20	9 430	1 712	0,18
	21–	4 440	385	0,09
	Total	56 621	15 002	0,26
85	0–6	8 608	3 907	0,45
	7–12	12 750	2 306	0,18
	13–16	12 925	1 745	0,14
	17–20	9 963	1 357	0,14
	21–	3 979	505	0,13
	Total	48 225	9 820	0,20
90	0–6	6 185	2 886	0,47
	7–12	9 076	1 276	0,14
	13–16	10 777	947	0,09
	17–20	8 687	790	0,09
	21–	3 103	464	0,15
	Total	37 828	6 363	0,17

Table 10
Number of index persons where Population and Housing Census father and grandfathers are in agreement, broken down by Population and Housing Census year and age group

Year of Population and Housing Census	Age group	Number of index persons where PHC-father and biological father <i>not</i> agree	Of which – number of index persons where PHC-father and grandfather agree	
			Number	Share
60	0-6	30 708	10 272	0,33
	7-12	30 607	863	0,03
	13-16	26 453	2	0,00
	17-20	15 056	0	0,00
	21-	4 003	0	0,00
	Total	106 827	11 137	0,10
65	0-6	34 217	15 399	0,45
	7-12	29 021	2 624	0,09
	13-16	24 768	400	0,02
	17-20	20 236	4	0,00
	21-	7 127	0	0,00
	Total	115 369	18 427	0,16
70	0-6	24 895	9 920	0,40
	7-12	28 051	3 031	0,11
	13-16	21 960	1 253	0,06
	17-20	16 908	432	0,03
	21-	7 889	12	0,00
	Total	99 703	14 648	0,15
75	0-6	19 278	4 151	0,22
	7-12	41 754	2 525	0,06
	13-16	26 050	1 338	0,05
	17-20	14 509	480	0,03
	21-	6 258	77	0,01
	Total	107 849	8 571	0,08
80	0-6	20 250	4 548	0,22
	7-12	46 474	2 966	0,06
	13-16	42 211	2 113	0,05
	17-20	22 074	1 043	0,05
	21-	7 787	232	0,03
	Total	138 796	10 902	0,08
85	0-6	17 013	2 893	0,17
	7-12	42 874	1 630	0,04
	13-16	39 371	1 052	0,03
	17-20	30 123	779	0,03
	21-	9 304	265	0,03
	Total	138 685	6 619	0,05
90	0-6	15 520	1 980	0,13
	7-12	37 513	753	0,02
	13-16	35 320	532	0,02
	17-20	27 278	419	0,02
	21-	8 613	210	0,02
	Total	124 244	3 894	0,03

Table 11

Number and share of deceased index persons born in Sweden, by birth year and year of death with information on parents

Birth year	Total no. deceased	Deceased 1961-1967			Deceased 1968-30 June 1991			Deceased 1 July 1991-2009		
		Number	Share with data on		Number	Share with data on		Number	Share with data on	
			Mother	Father		Mother	Father		Mother	Father
1932	26 706	577	0,33	0,31	6 392	0,09	0,03	19 737	0,38	0,34
1933	23 515	556	0,69	0,67	5 627	0,17	0,06	17 332	0,71	0,64
1934	21 847	512	0,83	0,78	5 192	0,21	0,08	16 142	0,85	0,77
1935	20 093	497	0,87	0,83	4 767	0,25	0,10	14 829	0,89	0,82
1936	18 913	486	0,88	0,86	4 425	0,28	0,11	14 002	0,91	0,84
1937	17 772	454	0,91	0,86	4 202	0,30	0,13	13 116	0,92	0,84
1938	16 897	438	0,92	0,90	3 971	0,33	0,14	12 488	0,92	0,86
1939	16 584	531	0,91	0,87	3 854	0,37	0,17	12 199	0,93	0,86
1940	14 734	523	0,92	0,87	3 492	0,40	0,19	10 719	0,93	0,87
1941	14 536	517	0,94	0,90	3 376	0,41	0,21	10 643	0,94	0,89
1942	15 078	573	0,95	0,90	3 451	0,45	0,23	11 054	0,96	0,90
1943	15 733	621	0,95	0,93	3 684	0,47	0,24	11 428	0,96	0,91
1944	15 435	661	0,96	0,91	3 616	0,50	0,27	11 158	0,96	0,91
1945	14 082	689	0,97	0,92	3 385	0,54	0,29	10 008	0,97	0,92
1946	12 771	559	0,97	0,93	3 201	0,57	0,31	9 011	0,98	0,93
1947	11 514	523	0,97	0,93	2 939	0,58	0,34	8 052	0,98	0,94
1948	10 316	423	0,99	0,95	2 766	0,62	0,37	7 127	0,99	0,95
1949	9 126	380	0,99	0,97	2 532	0,64	0,37	6 214	0,99	0,96
1950	8 195	283	0,99	0,96	2 301	0,66	0,43	5 611	0,99	0,95
1951	7 305	237	1,00	0,97	2 157	0,68	0,45	4 911	0,99	0,95
1952	6 655	257	0,99	0,95	1 993	0,70	0,46	4 405	0,99	0,96
1953	6 258	246	1,00	0,95	1 958	0,72	0,51	4 054	0,99	0,96
1954	5 563	201	0,99	0,97	1 803	0,74	0,54	3 559	0,99	0,97
1955	5 469	272	0,99	0,95	1 759	0,77	0,56	3 438	0,99	0,97
1956	5 039	290	0,99	0,97	1 593	0,79	0,59	3 156	0,99	0,97
1957	4 577	315	0,98	0,96	1 495	0,80	0,61	2 767	0,99	0,96
1958	4 164	328	0,98	0,97	1 376	0,81	0,64	2 460	0,99	0,97
1959	3 826	393	0,98	0,96	1 313	0,81	0,62	2 120	0,99	0,97
1960	3 848	479	0,98	0,96	1 321	0,83	0,66	2 048	0,99	0,98
1961	4 952	1 908	1,00	0,88	1 215	1,00	0,92	1 829	1,00	0,97
1962	4 698	1 825	1,00	0,88	1 088	1,00	0,95	1 785	1,00	0,98
1963	4 708	1 806	1,00	0,88	1 212	1,00	0,93	1 690	1,00	0,98
1964	4 843	1 816	1,00	0,87	1 242	1,00	0,94	1 785	1,00	0,97
1965	4 441	1 621	1,00	0,86	1 162	1,00	0,94	1 658	1,00	0,97
1966	3 972	1 491	1,00	0,86	1 125	1,00	0,95	1 356	1,00	0,99
1967	3 827	1 317	1,00	0,86	1 169	1,00	0,94	1 341	1,00	0,98
1968	3 367	.	.	.	2 277	1,00	0,90	1 090	1,00	0,98
1969	2 938	.	.	.	1 859	1,00	0,88	1 079	1,00	0,98
1970	2 958	.	.	.	1 854	1,00	0,88	1 104	1,00	0,98
1971	2 831	.	.	.	1 830	1,00	0,87	1 001	1,00	0,98
1972	2 648	.	.	.	1 702	1,00	0,85	946	1,00	0,99
1973	2 488	.	.	.	1 549	1,00	0,83	939	1,00	0,98
1974	2 427	.	.	.	1 505	1,00	0,84	922	1,00	0,99
1975	2 095	.	.	.	1 221	1,00	0,82	874	1,00	0,99
1976	1 883	.	.	.	1 130	1,00	0,83	753	1,00	0,99
1977	1 724	.	.	.	1 024	0,99	0,82	700	1,00	0,98
1978	1 583	.	.	.	932	0,99	0,81	651	1,00	0,99
1979	1 605	.	.	.	944	1,00	0,80	661	1,00	0,99
1980	1 526	.	.	.	859	1,00	0,86	667	1,00	0,99
1981	1 410	.	.	.	792	1,00	0,84	618	1,00	0,99

Table 11 (cont.)

Birth year	Total no. deceased	Deceased 1961-1967			Deceased 1968-30 June 1991			Deceased 1 July 1991-2009		
		Number	Share with data on		Number	Share with data on		Number	Share with data on	
			Mother	Father		Mother	Father		Mother	Father
1982	1 376	.	.	.	785	0,99	0,83	591	1,00	0,99
1983	1 326	.	.	.	808	1,00	0,86	518	1,00	1,00
1984	1 218	.	.	.	756	1,00	0,89	462	1,00	0,99
1985	1 271	.	.	.	782	1,00	0,87	489	1,00	0,99
1986	1 206	.	.	.	715	0,99	0,85	491	1,00	0,99
1987	1 167	.	.	.	747	0,99	0,87	420	1,00	0,99
1988	1 153	.	.	.	723	1,00	0,84	430	1,00	1,00
1989	1 124	.	.	.	736	0,99	0,83	388	1,00	0,99
1990	1 199	.	.	.	741	0,99	0,83	458	1,00	0,99
1991	1 052	.	.	.	289	0,99	0,79	763	0,99	0,92
1992	921	921	0,98	0,88
1993	792	792	0,98	0,88
1994	672	672	1,00	0,89
1995	605	605	0,99	0,87
1996	504	504	1,00	0,88
1997	450	450	1,00	0,88
1998	427	427	1,00	0,89
1999	423	423	1,00	0,88
2000	409	409	1,00	0,90
2001	424	424	1,00	0,89
2002	400	400	1,00	0,89
2003	405	405	1,00	0,89
2004	381	381	1,00	0,86
2005	322	322	1,00	0,92
2006	340	340	1,00	0,90
2007	317	317	1,00	0,86
2008	290	290	1,00	0,86
2009	245	245	1,00	0,85
Total	439 894	24 605	0,95	0,87	124 714	0,60	0,43	290 574	0,90	0,85

Table 12
Number of data for deceased index persons born in Sweden, by variables and source

Variable	Source				No data
	TPR	Personal record	Register of births	Population and Housing Census	
Own country of birth	401 485	11 464	1 790	32	0
Biological mother's country of birth	327 706	1 146	133	687	85 099
Biological father's country of birth	284 624	1 437	0	881	127 829
Biological mother's reg. no.	318 176	11 644	6 958	0	77 993
Biological mother's birth date	326 531	11 953	6 996	0	69 291
Biological father's reg. no.	279 271	14 137	6 135	0	115 228
Biological father's birth date	295 110	14 993	6 165	0	98 503

Table 13A
Number and share of deceased index persons born in Sweden, with information on mother, by year of death and source

Death year	All deceased	Source mother's registration number							
		TPR		Personal record		Register of births		Total with data on mother	
		Number	Share	Number	Share	Number	Share	Number	Share
1961	3 268	1 474	0,45	1598	0,49	53	0,02	3 125	0,96
1962	3 306	1 565	0,47	1572	0,48	36	0,01	3 173	0,96
1963	3 552	1 642	0,46	1687	0,47	50	0,01	3 379	0,95
1964	3 616	1 687	0,47	1757	0,49	33	0,01	3 477	0,96
1965	3 625	1 742	0,48	1688	0,47	39	0,01	3 469	0,96
1966	3 595	1 803	0,50	1564	0,44	47	0,01	3 414	0,95
1967	3 643	1 688	0,46	1658	0,46	60	0,02	3 406	0,93
1968	3 859	1 887	0,49	4	0,00	604	0,16	2 495	0,65
1969	3 700	1 867	0,50	1	0,00	504	0,14	2 372	0,64
1970	3 791	1 919	0,51	1	0,00	477	0,13	2 397	0,63
1971	3 901	1 996	0,51	2	0,00	457	0,12	2 455	0,63
1972	4 074	2 077	0,51	1	0,00	414	0,10	2 492	0,61
1973	4 008	2 062	0,51	2	0,00	370	0,09	2 434	0,61
1974	4 185	2 133	0,51	4	0,00	363	0,09	2 500	0,60
1975	4 363	2 256	0,52	3	0,00	324	0,07	2 583	0,59
1976	4 463	2 239	0,50	1	0,00	301	0,07	2 541	0,57
1977	4 525	2 149	0,47	3	0,00	292	0,06	2 444	0,54
1978	4 700	2 253	0,48	5	0,00	273	0,06	2 531	0,54
1979	4 940	2 404	0,49	9	0,00	280	0,06	2 693	0,55
1980	5 032	2 645	0,53	4	0,00	207	0,04	2 856	0,57
1981	4 935	2 870	0,58	4	0,00	147	0,03	3 021	0,61
1982	5 181	3 009	0,58	3	0,00	163	0,03	3 175	0,61
1983	5 482	3 119	0,57	1	0,00	172	0,03	3 292	0,60
1984	5 720	3 269	0,57	5	0,00	151	0,03	3 425	0,60
1985	6 136	3 560	0,58	4	0,00	154	0,03	3 718	0,61
1986	6 566	3 725	0,57	8	0,00	154	0,02	3 887	0,59
1987	7 021	4 012	0,57	8	0,00	148	0,02	4 168	0,59
1988	7 645	4 388	0,57	8	0,00	185	0,02	4 581	0,60
1989	7 835	4 519	0,58	4	0,00	163	0,02	4 686	0,60
1990	8 283	4 629	0,56	9	0,00	175	0,02	4 813	0,58
1991	8 973	7 025	0,78	2	0,00	65	0,01	7 092	0,79
1992	9 118	8 241	0,90	0	0,00	1	0,00	8 242	0,90
1993	9 665	8 683	0,90	1	0,00	0	0,00	8 684	0,90
1994	10 166	9 175	0,90	0	0,00	1	0,00	9 176	0,90
1995	10 580	9 507	0,90	1	0,00	2	0,00	9 510	0,90
1996	11 116	9 941	0,89	0	0,00	0	0,00	9 941	0,89
1997	11 757	10 553	0,90	0	0,00	0	0,00	10 553	0,90
1998	12 577	11 276	0,90	0	0,00	4	0,00	11 280	0,90
1999	13 430	12 050	0,90	1	0,00	0	0,00	12 051	0,90
2000	14 343	12 904	0,90	0	0,00	0	0,00	12 904	0,90
2001	15 541	13 995	0,90	0	0,00	2	0,00	13 997	0,90
2002	16 502	14 765	0,89	1	0,00	15	0,00	14 781	0,90
2003	17 745	15 903	0,90	2	0,00	9	0,00	15 914	0,90
2004	19 082	17 065	0,89	0	0,00	11	0,00	17 076	0,89
2005	20 163	18 176	0,90	0	0,00	14	0,00	18 190	0,90
2006	21 367	19 271	0,90	1	0,00	12	0,00	19 284	0,90
2007	22 689	20 474	0,90	1	0,00	18	0,00	20 493	0,90
2008	24 339	21 940	0,90	2	0,00	9	0,00	21 951	0,90
2009	25 791	23 227	0,90	1	0,00	9	0,00	23 237	0,90
Total	439 894	340 759	0,77	11 631	0,03	6 968	0,02	359 358	0,82

Table 13B
Number and share of deceased index persons born in Sweden, with information on father, by year of death and source

Death year	All deceased	Source father's registration number							
		TPR		Personal record		Register of births		Total with data on father	
		Number	Share	Number	Share	Number	Share	Number	Share
1961	3 268	914	0,28	1888	0,58	45	0,01	2 847	0,87
1962	3 306	978	0,30	1880	0,57	41	0,01	2 899	0,88
1963	3 552	1 000	0,28	2057	0,58	48	0,01	3 105	0,87
1964	3 616	1 025	0,28	2113	0,58	39	0,01	3 177	0,88
1965	3 625	1 114	0,31	2032	0,56	30	0,01	3 176	0,88
1966	3 595	1 100	0,31	2008	0,56	42	0,01	3 150	0,88
1967	3 643	1 035	0,28	2048	0,56	55	0,02	3 138	0,86
1968	3 859	1 363	0,35	1	0,00	610	0,16	1 974	0,51
1969	3 700	1 336	0,36	1	0,00	511	0,14	1 848	0,50
1970	3 791	1 468	0,39	1	0,00	416	0,11	1 885	0,50
1971	3 901	1 566	0,40	3	0,00	368	0,09	1 937	0,50
1972	4 074	1 609	0,39	1	0,00	336	0,08	1 946	0,48
1973	4 008	1 583	0,39	3	0,00	268	0,07	1 854	0,46
1974	4 185	1 665	0,40	5	0,00	297	0,07	1 967	0,47
1975	4 363	1 728	0,40	2	0,00	238	0,05	1 968	0,45
1976	4 463	1 776	0,40	1	0,00	227	0,05	2 004	0,45
1977	4 525	1 600	0,35	1	0,00	234	0,05	1 835	0,41
1978	4 700	1 729	0,37	4	0,00	223	0,05	1 956	0,42
1979	4 940	1 801	0,36	9	0,00	212	0,04	2 022	0,41
1980	5 032	1 820	0,36	2	0,00	178	0,04	2 000	0,40
1981	4 935	1 949	0,39	2	0,00	144	0,03	2 095	0,42
1982	5 181	1 922	0,37	2	0,00	137	0,03	2 061	0,40
1983	5 482	2 024	0,37	1	0,00	173	0,03	2 198	0,40
1984	5 720	2 142	0,37	4	0,00	154	0,03	2 300	0,40
1985	6 136	2 323	0,38	2	0,00	168	0,03	2 493	0,41
1986	6 566	2 427	0,37	6	0,00	154	0,02	2 587	0,39
1987	7 021	2 538	0,36	8	0,00	164	0,02	2 710	0,39
1988	7 645	2 788	0,36	1	0,00	164	0,02	2 953	0,39
1989	7 835	2 902	0,37	5	0,00	152	0,02	3 059	0,39
1990	8 283	3 044	0,37	5	0,00	169	0,02	3 218	0,39
1991	8 973	6 129	0,68	1	0,00	58	0,01	6 188	0,69
1992	9 118	7 742	0,85	1	0,00	2	0,00	7 745	0,85
1993	9 665	8 111	0,84	0	0,00	1	0,00	8 112	0,84
1994	10 166	8 633	0,85	0	0,00	6	0,00	8 639	0,85
1995	10 580	8 880	0,84	1	0,00	2	0,00	8 883	0,84
1996	11 116	9 310	0,84	0	0,00	0	0,00	9 310	0,84
1997	11 757	9 921	0,84	0	0,00	3	0,00	9 924	0,84
1998	12 577	10 599	0,84	1	0,00	3	0,00	10 603	0,84
1999	13 430	11 324	0,84	1	0,00	2	0,00	11 327	0,84
2000	14 343	12 164	0,85	0	0,00	5	0,00	12 169	0,85
2001	15 541	13 124	0,84	1	0,00	3	0,00	13 128	0,84
2002	16 502	13 901	0,84	1	0,00	1	0,00	13 903	0,84
2003	17 745	14 999	0,85	2	0,00	5	0,00	15 006	0,85
2004	19 082	16 069	0,84	1	0,00	9	0,00	16 079	0,84
2005	20 163	17 166	0,85	1	0,00	9	0,00	17 176	0,85
2006	21 367	18 132	0,85	2	0,00	5	0,00	18 139	0,85
2007	22 689	19 408	0,86	1	0,00	14	0,00	19 423	0,86
2008	24 339	20 780	0,85	2	0,00	9	0,00	20 791	0,85
2009	25 791	21 954	0,85	1	0,00	12	0,00	21 967	0,85
Total	439 894	300 615	0,68	14 113	0,03	6 146	0,01	320 874	0,73

Table 14
Number of index persons by number of ancestors in previous generations

Number of ancestors	Number of previous generations				
	1 Parents (maximum 2)	2 Grandparents (maximum 4)	3 Great-grand- parents (maximum 8)	4 Parents to great-grand- parents (maximum 16)	5 Grandparents to great-grand- parents (mimum 32)
0	1 583 811	5 181 354	8 041 026	9 989 364	10 132 467
1	399 520	116 458	67 096	14 725	12
2	8 149 194	856 500	337 150	59 240	32
3	-	326 787	118 115	11 946	6
4	-	3 651 426	480 107	29 136	6
5	-	-	94 989	5 412	2
6	-	-	292 484	9 970	0
7	-	-	157 687	3 265	0
8	-	-	543 871	5 078	0
9	-	-	-	1 109	0
10	-	-	-	1 514	0
11	-	-	-	530	0
12	-	-	-	710	0
13	-	-	-	195	0
14	-	-	-	194	0
15	-	-	-	70	0
16	-	-	-	67	0
17	-	-	-	-	0
18	-	-	-	-	0
19	-	-	-	-	0
20	-	-	-	-	0
21	-	-	-	-	0
22	-	-	-	-	0
23	-	-	-	-	0
24	-	-	-	-	0
25	-	-	-	-	0
26	-	-	-	-	0
27	-	-	-	-	0
28	-	-	-	-	0
29	-	-	-	-	0
30	-	-	-	-	0
31	-	-	-	-	0
32	-	-	-	-	0
Total	8 548 714	4 951 171	2 091 499	143 161	58

Table 15A
Number of index persons by number of siblings and year of birth

Number of siblings	Year of birth for the index							
	1932–1939	1940–1949	1950–1959	1960–1969	1970–1979	1980–1989	1990–1999	2000–2009
0	262 264	188 254	94 981	71 305	62 036	40 869	53 093	177 479
1	157 442	347 577	319 768	395 175	404 418	329 600	413 424	462 421
2	106 315	273 889	281 113	335 983	313 622	329 746	328 110	233 700
3	61 490	159 801	167 295	171 209	142 015	163 692	151 272	84 917
4	33 692	85 931	87 779	80 936	64 035	74 795	67 493	33 929
5	17 961	46 083	46 878	40 227	30 931	35 497	30 839	15 068
6	10 008	25 388	25 202	20 408	14 732	16 418	13 923	7 063
7	5 602	13 613	13 422	9 966	6 858	7 682	6 757	3 654
8-	6 539	16 062	15 646	10 480	7 192	7 265	7 023	3 869
Total	661 313	1 156 598	1 052 084	1 135 689	1 045 839	1 005 564	1 071 934	1 022 100

Table 15B
Number of index persons by number of siblings and year of birth, percent

Number of siblings	Year of birth for the index							
	1932–1939	1940–1949	1950–1959	1960–1969	1970–1979	1980–1989	1990–1999	2000–2009
0	40	16	9	6	6	4	5	17
1	24	30	30	35	39	33	39	45
2	16	24	27	30	30	33	31	23
3	9	14	16	15	14	16	14	8
4	5	7	8	7	6	7	6	3
5	3	4	4	4	3	4	3	1
6	2	2	2	2	1	2	1	1
7	1	1	1	1	1	1	1	0
8-	1	1	1	1	1	1	1	0

Appendix 2

Tables showing adopted index persons and adoptive parents

Multi-Generation Register version 2009-12-31

Table 16
Number and share of adopted index persons, by year of birth and country of birth

Birth year	Number of index persons	Born in Sweden		Foreign-born		Unknown country of birth	
		Number	Share	Number	Share	Number	Share
1932	912	840	0,92	66	0,07	6	0,01
1933	1 125	1 018	0,90	95	0,08	12	0,01
1934	1 283	1 113	0,87	156	0,12	14	0,01
1935	1 522	1 247	0,82	265	0,17	10	0,01
1936	1 681	1 370	0,81	293	0,17	18	0,01
1937	1 912	1 518	0,79	377	0,20	17	0,01
1938	2 199	1 699	0,77	475	0,22	25	0,01
1939	2 381	1 791	0,75	576	0,24	14	0,01
1940	2 633	2 078	0,79	536	0,20	19	0,01
1941	2 839	2 362	0,83	456	0,16	21	0,01
1942	2 816	2 497	0,89	305	0,11	14	0,00
1943	3 177	2 917	0,92	233	0,07	27	0,01
1944	3 361	3 142	0,93	197	0,06	22	0,01
1945	3 543	3 347	0,94	180	0,05	16	0,00
1946	3 177	2 985	0,94	170	0,05	22	0,01
1947	2 959	2 814	0,95	128	0,04	17	0,01
1948	2 871	2 734	0,95	118	0,04	19	0,01
1949	2 791	2 635	0,94	136	0,05	20	0,01
1950	2 793	2 643	0,95	136	0,05	14	0,01
1951	2 647	2 507	0,95	120	0,05	20	0,01
1952	2 624	2 480	0,95	125	0,05	19	0,01
1953	2 443	2 303	0,94	126	0,05	14	0,01
1954	2 225	2 064	0,93	147	0,07	14	0,01
1955	2 379	2 228	0,94	138	0,06	13	0,01
1956	2 262	2 112	0,93	142	0,06	8	0,00
1957	2 245	2 110	0,94	127	0,06	8	0,00
1958	2 251	2 133	0,95	113	0,05	5	0,00
1959	2 234	2 073	0,93	155	0,07	6	0,00
1960	2 222	2 055	0,92	164	0,07	3	0,00
1961	2 269	2 097	0,92	163	0,07	9	0,00
1962	2 419	2 238	0,93	170	0,07	11	0,00
1963	2 543	2 300	0,90	234	0,09	9	0,00
1964	2 783	2 497	0,90	274	0,10	12	0,00
1965	2 599	2 251	0,87	345	0,13	3	0,00
1966	2 536	2 083	0,82	449	0,18	4	0,00
1967	2 435	1 820	0,75	612	0,25	3	0,00
1968	2 165	1 488	0,69	676	0,31	1	0,00
1969	2 109	1 249	0,59	860	0,41	0	0,00
1970	2 314	1 243	0,54	1 068	0,46	3	0,00
1971	2 432	1 178	0,48	1 254	0,52	0	0,00
1972	2 554	1 067	0,42	1 487	0,58	0	0,00
1973	2 336	957	0,41	1 378	0,59	1	0,00
1974	2 461	824	0,33	1 637	0,67	0	0,00
1975	2 252	661	0,29	1 590	0,71	1	0,00
1976	2 457	575	0,23	1 882	0,77	0	0,00
1977	2 193	500	0,23	1 692	0,77	1	0,00
1978	2 032	467	0,23	1 564	0,77	1	0,00
1979	1 964	409	0,21	1 555	0,79	0	0,00
1980	2 210	413	0,19	1 797	0,81	0	0,00
1981	2 125	359	0,17	1 765	0,83	1	0,00

Table 16 (cont.)

Birth year	Number of index persons	Born in Sweden		Foreign-born		Unknown country of birth	
		Number	Share	Number	Share	Number	Share
1982	1 966	313	0,16	1 653	0,84	0	0,00
1983	1 906	255	0,13	1 651	0,87	0	0,00
1984	1 917	241	0,13	1 676	0,87	0	0,00
1985	1 873	257	0,14	1 616	0,86	0	0,00
1986	1 847	222	0,12	1 625	0,88	0	0,00
1987	1 678	217	0,13	1 461	0,87	0	0,00
1988	1 375	216	0,16	1 158	0,84	1	0,00
1989	1 276	180	0,14	1 096	0,86	0	0,00
1990	1 266	167	0,13	1 099	0,87	0	0,00
1991	1 358	134	0,10	1 224	0,90	0	0,00
1992	1 211	126	0,10	1 084	0,90	1	0,00
1993	1 076	100	0,09	976	0,91	0	0,00
1994	1 026	83	0,08	943	0,92	0	0,00
1995	971	74	0,08	896	0,92	1	0,00
1996	929	65	0,07	864	0,93	0	0,00
1997	1 001	54	0,05	946	0,95	1	0,00
1998	1 028	58	0,06	970	0,94	0	0,00
1999	1 022	56	0,05	966	0,95	0	0,00
2000	959	51	0,05	908	0,95	0	0,00
2001	1 094	49	0,04	1 045	0,96	0	0,00
2002	1 120	56	0,05	1 064	0,95	0	0,00
2003	1 154	62	0,05	1 092	0,95	0	0,00
2004	952	57	0,06	895	0,94	0	0,00
2005	922	64	0,07	858	0,93	0	0,00
2006	674	68	0,10	606	0,90	0	0,00
2007	646	75	0,12	570	0,88	1	0,00
2008	464	82	0,18	382	0,82	0	0,00
2009	78	34	0,44	44	0,56	0	0,00
Total	151 491	92 914	0,61	58 075	0,38	502	0,00

Table 17**Number and share of adopted index persons born in Sweden, by year of birth, information on adoptive mother and father and adoption date**

Birth year	Number of index persons	Adoptive mother		Adoption date mother		Adoptive father		Adoption date father	
		Number	Share	Number	Share	Number	Share	Number	Share
1932	840	394	0,47	6	0,02	476	0,57	6	0,01
1933	1 018	530	0,52	6	0,01	638	0,63	14	0,02
1934	1 113	564	0,51	11	0,02	733	0,66	10	0,01
1935	1 247	614	0,49	10	0,02	833	0,67	13	0,02
1936	1 370	696	0,51	13	0,02	908	0,66	19	0,02
1937	1 518	834	0,55	19	0,02	1 078	0,71	26	0,02
1938	1 699	880	0,52	12	0,01	1 192	0,70	15	0,01
1939	1 791	973	0,54	13	0,01	1 289	0,72	25	0,02
1940	2 078	1 142	0,55	13	0,01	1 572	0,76	30	0,02
1941	2 362	1 286	0,54	22	0,02	1 837	0,78	44	0,02
1942	2 497	1 397	0,56	33	0,02	1 970	0,79	41	0,02
1943	2 917	1 635	0,56	26	0,02	2 332	0,80	36	0,02
1944	3 142	1 716	0,55	30	0,02	2 601	0,83	73	0,03
1945	3 347	1 844	0,55	31	0,02	2 832	0,85	84	0,03
1946	2 985	1 601	0,54	29	0,02	2 530	0,85	67	0,03
1947	2 814	1 558	0,55	35	0,02	2 446	0,87	74	0,03
1948	2 734	1 566	0,57	29	0,02	2 421	0,89	76	0,03
1949	2 635	1 482	0,56	26	0,02	2 370	0,90	86	0,04
1950	2 643	1 525	0,58	30	0,02	2 387	0,90	80	0,03
1951	2 507	1 493	0,60	25	0,02	2 308	0,92	74	0,03
1952	2 480	1 441	0,58	28	0,02	2 306	0,93	96	0,04
1953	2 303	1 361	0,59	37	0,03	2 154	0,94	103	0,05
1954	2 064	1 196	0,58	29	0,02	1 952	0,95	109	0,06
1955	2 228	1 365	0,61	27	0,02	2 080	0,93	84	0,04
1956	2 112	1 234	0,58	23	0,02	1 986	0,94	109	0,05
1957	2 110	1 275	0,60	32	0,03	1 984	0,94	133	0,07
1958	2 133	1 275	0,60	37	0,03	2 022	0,95	136	0,07
1959	2 073	1 214	0,59	35	0,03	1 968	0,95	147	0,07
1960	2 055	1 193	0,58	45	0,04	1 962	0,95	148	0,08
1961	2 097	1 175	0,56	38	0,03	2 003	0,96	193	0,10
1962	2 238	1 186	0,53	40	0,03	2 154	0,96	208	0,10
1963	2 300	1 194	0,52	38	0,03	2 195	0,95	218	0,10
1964	2 497	1 227	0,49	54	0,04	2 398	0,96	305	0,13
1965	2 251	1 082	0,48	56	0,05	2 165	0,96	305	0,14
1966	2 083	955	0,46	40	0,04	2 002	0,96	298	0,15
1967	1 820	788	0,43	52	0,07	1 754	0,96	334	0,19
1968	1 488	615	0,41	48	0,08	1 400	0,94	284	0,20
1969	1 249	490	0,39	55	0,11	1 178	0,94	285	0,24
1970	1 243	490	0,39	62	0,13	1 176	0,95	321	0,27
1971	1 178	416	0,35	77	0,19	1 109	0,94	353	0,32
1972	1 067	354	0,33	70	0,20	1 000	0,94	349	0,35
1973	957	296	0,31	106	0,36	886	0,93	401	0,45
1974	824	258	0,31	73	0,28	776	0,94	326	0,42
1975	661	205	0,31	73	0,36	622	0,94	279	0,45
1976	575	228	0,40	86	0,38	532	0,93	264	0,50
1977	500	175	0,35	69	0,39	464	0,93	232	0,50
1978	467	164	0,35	75	0,46	437	0,94	248	0,57
1979	409	142	0,35	59	0,42	383	0,94	194	0,51
1980	413	155	0,38	67	0,43	383	0,93	215	0,56
1981	359	130	0,36	62	0,48	335	0,93	188	0,56

Table 17 (cont.)

Birth year	Number of index persons	Adoptive mother		Adoption date mother		Adoptive father		Adoption date father	
		Number	Share	Number	Share	Number	Share	Number	Share
1982	313	116	0,37	52	0,45	295	0,94	179	0,61
1983	255	85	0,33	55	0,65	237	0,93	159	0,67
1984	241	74	0,31	35	0,47	225	0,93	149	0,66
1985	257	78	0,30	40	0,51	240	0,93	162	0,68
1986	222	75	0,34	42	0,56	202	0,91	141	0,70
1987	217	73	0,34	34	0,47	206	0,95	147	0,71
1988	216	73	0,34	42	0,58	201	0,93	158	0,79
1989	180	60	0,33	35	0,58	171	0,95	141	0,82
1990	167	60	0,36	43	0,72	155	0,93	138	0,89
1991	134	47	0,35	46	0,98	124	0,93	123	0,99
1992	126	41	0,33	41	1,00	120	0,95	120	1,00
1993	100	30	0,30	30	1,00	98	0,98	98	1,00
1994	83	27	0,33	27	1,00	78	0,94	78	1,00
1995	74	29	0,39	29	1,00	69	0,93	69	1,00
1996	65	23	0,35	23	1,00	65	1,00	65	1,00
1997	54	21	0,39	21	1,00	54	1,00	54	1,00
1998	58	19	0,33	19	1,00	56	0,97	56	1,00
1999	56	20	0,36	20	1,00	55	0,98	55	1,00
2000	51	26	0,51	26	1,00	47	0,92	47	1,00
2001	49	20	0,41	20	1,00	45	0,92	45	1,00
2002	56	35	0,63	35	1,00	39	0,70	39	1,00
2003	62	40	0,65	40	1,00	35	0,56	35	1,00
2004	57	40	0,70	40	1,00	27	0,47	27	1,00
2005	64	55	0,86	55	1,00	25	0,39	25	1,00
2006	68	61	0,90	61	1,00	18	0,26	18	1,00
2007	75	73	0,97	73	1,00	14	0,19	14	1,00
2008	82	81	0,99	81	1,00	16	0,20	16	1,00
2009	34	34	1,00	34	1,00	10	0,29	10	1,00
Total	92 914	48 429	0,52	3 115	0,06	81 452	0,88	10 132	0,12

Table 18

Number and share of adopted foreign-born index persons, by year of birth, information on adoptive mother and father and adoption date

Birth year	Number of index persons	Adoptive mother		Adoption date mother		Adoptive father		Adoption date father	
		Number	Share	Number	Share	Number	Share	Number	Share
1932	66	36	0,55	1	0,03	33	0,50	1	0,03
1933	95	55	0,58	1	0,02	40	0,42	0	0,00
1934	156	84	0,54	5	0,06	88	0,56	4	0,05
1935	265	168	0,63	6	0,04	142	0,54	5	0,04
1936	293	186	0,63	2	0,01	164	0,56	2	0,01
1937	377	258	0,68	4	0,02	241	0,64	4	0,02
1938	475	322	0,68	5	0,02	299	0,63	5	0,02
1939	576	371	0,64	8	0,02	353	0,61	8	0,02
1940	536	365	0,68	5	0,01	382	0,71	4	0,01
1941	456	303	0,66	6	0,02	349	0,77	7	0,02
1942	305	175	0,57	5	0,03	219	0,72	5	0,02
1943	233	128	0,55	4	0,03	177	0,76	4	0,02
1944	197	84	0,43	3	0,04	154	0,78	6	0,04
1945	180	54	0,30	3	0,06	144	0,80	5	0,03
1946	170	66	0,39	2	0,03	127	0,75	6	0,05
1947	128	61	0,48	0	0,00	108	0,84	3	0,03
1948	118	55	0,47	0	0,00	93	0,79	3	0,03
1949	136	77	0,57	0	0,00	112	0,82	2	0,02
1950	136	77	0,57	3	0,04	114	0,84	3	0,03
1951	120	63	0,53	4	0,06	98	0,82	5	0,05
1952	125	69	0,55	3	0,04	104	0,83	5	0,05
1953	126	72	0,57	2	0,03	111	0,88	5	0,05
1954	147	76	0,52	3	0,04	118	0,80	7	0,06
1955	138	74	0,54	1	0,01	122	0,88	4	0,03
1956	142	84	0,59	2	0,02	119	0,84	8	0,07
1957	127	73	0,57	5	0,07	107	0,84	8	0,07
1958	113	63	0,56	3	0,05	97	0,86	9	0,09
1959	155	83	0,54	2	0,02	131	0,85	11	0,08
1960	164	94	0,57	1	0,01	146	0,89	8	0,05
1961	163	91	0,56	2	0,02	141	0,87	16	0,11
1962	170	108	0,64	4	0,04	154	0,91	13	0,08
1963	234	150	0,64	2	0,01	212	0,91	14	0,07
1964	274	207	0,76	4	0,02	249	0,91	18	0,07
1965	345	273	0,79	4	0,01	313	0,91	10	0,03
1966	449	379	0,84	11	0,03	415	0,92	21	0,05
1967	612	539	0,88	10	0,02	564	0,92	16	0,03
1968	676	602	0,89	8	0,01	632	0,93	19	0,03
1969	860	796	0,93	7	0,01	825	0,96	28	0,03
1970	1 068	981	0,92	7	0,01	1 014	0,95	27	0,03
1971	1 254	1 182	0,94	6	0,01	1 204	0,96	23	0,02
1972	1 487	1 398	0,94	15	0,01	1 420	0,95	47	0,03
1973	1 378	1 313	0,95	22	0,02	1 326	0,96	41	0,03
1974	1 637	1 563	0,95	23	0,01	1 563	0,95	55	0,04
1975	1 590	1 507	0,95	19	0,01	1 532	0,96	56	0,04
1976	1 882	1 811	0,96	13	0,01	1 815	0,96	38	0,02
1977	1 692	1 621	0,96	33	0,02	1 636	0,97	59	0,04
1978	1 564	1 503	0,96	33	0,02	1 514	0,97	58	0,04
1979	1 555	1 495	0,96	34	0,02	1 501	0,97	68	0,05
1980	1 797	1 737	0,97	32	0,02	1 748	0,97	52	0,03
1981	1 765	1 708	0,97	45	0,03	1 695	0,96	65	0,04

Table 18 (cont.)

Birth year	Number of index persons	Adoptive mother		Adoption date mother		Adoptive father		Adoption date father	
		Number	Share	Number	Share	Number	Share	Number	Share
1982	1 653	1 586	0,96	65	0,04	1 599	0,97	97	0,06
1983	1 651	1 581	0,96	63	0,04	1 580	0,96	88	0,06
1984	1 676	1 608	0,96	104	0,06	1 598	0,95	132	0,08
1985	1 616	1 559	0,96	134	0,09	1 545	0,96	154	0,10
1986	1 625	1 567	0,96	183	0,12	1 567	0,96	203	0,13
1987	1 461	1 410	0,97	251	0,18	1 394	0,95	260	0,19
1988	1 158	1 107	0,96	338	0,31	1 089	0,94	346	0,32
1989	1 096	1 036	0,95	464	0,45	1 030	0,94	477	0,46
1990	1 099	1 043	0,95	751	0,72	1 035	0,94	749	0,72
1991	1 224	1 172	0,96	1 167	1,00	1 168	0,95	1 164	1,00
1992	1 084	1 031	0,95	1 031	1,00	1 034	0,95	1 034	1,00
1993	976	939	0,96	939	1,00	917	0,94	917	1,00
1994	943	911	0,97	911	1,00	897	0,95	897	1,00
1995	896	872	0,97	872	1,00	837	0,93	837	1,00
1996	864	839	0,97	839	1,00	812	0,94	812	1,00
1997	946	917	0,97	917	1,00	881	0,93	881	1,00
1998	970	947	0,98	947	1,00	896	0,92	896	1,00
1999	966	949	0,98	949	1,00	896	0,93	896	1,00
2000	908	894	0,98	894	1,00	818	0,90	818	1,00
2001	1 045	1 023	0,98	1 023	1,00	947	0,91	947	1,00
2002	1 064	1 056	0,99	1 056	1,00	990	0,93	990	1,00
2003	1 092	1 084	0,99	1 084	1,00	990	0,91	990	1,00
2004	895	888	0,99	888	1,00	822	0,92	822	1,00
2005	858	853	0,99	853	1,00	800	0,93	800	1,00
2006	606	601	0,99	601	1,00	559	0,92	559	1,00
2007	570	569	1,00	569	1,00	518	0,91	518	1,00
2008	382	377	0,99	377	1,00	351	0,92	351	1,00
2009	44	43	0,98	43	1,00	38	0,86	38	1,00
Total	58 075	53 102	0,91	18 736	0,35	53 573	0,92	18 564	0,35

Appendix 3

Personal records

RSV 7280 Urig 4 DB 607341 ALLF 4456083

19 Inflyttad (överförd) Migrated to			20 Anteckningar om adoptivföräldrar eller adoptivbarn, omyndigförklaring m m Notes: Adoptive parents, incapacitated etc		
Nr	År, mån, dag	Till församling (obefintligregister), fastighet/uppdrag	Nr	År, mån, dag	Till församling (obefintligregister), fastighet/uppdrag
1	year,	Parish, real estate	11		
2	month,		12		
3	day		13		
4			14		
5			15		
6			16		
7			17		
8			18		
9			19		
10			20		

21 Död eller dödförklarad Dead or declared dead		22 Dödsorsak Cause of death		23 Uvänderad Emigrated	

24 Bladet upprättat This form was drawn up: Date	
år, mån, dag	

25 Initialer och efternamn Initials and surname	

Blad nr

2004:1	Örestat II, Utvidgad och integrerad flyttningsstatistik, Förstudie
2004:2	Frågebank över bakgrundsfrågor i postenkätundersökningar
2004:3	Samordning av BHU-H och HEK – Samordning 2003
2004:4	Könsuppdelad statistik – Återrapportering av ett uppdrag i regleringsbrevet
2004:5	Flergenerationsregistret 2003 – En beskrivning av innehåll och kvalitet
2004:6	Den nya HUT:en, Hushållens utgifter
2004:7	Multi-Generation Register 2003 - A description of contents and quality
2005:1	Flergenerationsregistret 2004 – En beskrivning av innehåll och kvalitet
2005:2	Multi-Generation Register 2004 - A Description of contents and quality
2005:3	Datafångst av personakter för komplettering av Flergenerationsregistrer
2005:4	Historiska befolkningsregistret (HBR)
2005:5	Migrations- och integrationsstatistik vid SCB – nuläge och utveckling
2006:1	Publikationsprojektet – slutrapport
2006:2	Översyn av forskarutbildningsstatistiken
2006:3	Historic population register
2006:4	Evalvering av utbildningsregistret
2006:5	Flergenerationsregistret 2005 – En beskrivning av innehåll och kvalitet
2006:6	Multi-generation register 2005. A description of contents and quality
2006:7	To measure and monitor internal migration based on national population register. IAOS Conference Ottawa, Canada
2007:1	Personnummer– dess konstruktion och hantering inom Statistiska centralbyrån
2007:2	Flergenerationsregistret 2006. En beskrivning av innehåll och kvalitet
2007:3	Multi-generation register 2006. A description of contents and quality
2008:1	Flergenerationsregistret 2007. En beskrivning av innehåll och kvalitet
2008:2	Multi-generation register 2007. A description of contents and quality
2009:1	Flergenerationsregistret 2008. En beskrivning av innehåll och kvalitet
2009:2	Multi-generation register 2008. A description of contents and quality
2010:1	Alternativa datainsamlingsmetoder i ULF, fas 2. En jämförelse mellan två olika datainsamlingsmetoder
2010:2	Flergenerationsregistret 2009. En beskrivning av innehåll och kvalitet

ISSN 1654-4331 (online)

All officiell statistik finns på: **www.scb.se**
Kundservice: tfn 08-506 948 01

All official statistics can be found at: **www.scb.se**
Customer service, phone +46 8 506 948 01