

POPULATION AND WELFARE

BACKGROUND FACTS 2017:2

SCB

Statistics Sweden

Statistiska centralbyrån

# Multi-generation register 2016

A description of content and quality



# **Multi-generation register 2016**

## **A description of contents and quality**

Befolkning och Välfärd – Bakgrundsfakta 2017:2

## Flergenerationsregistret 2016 – En beskrivning av innehåll och kvalitet

Population and Welfare – Background Facts 2017:2

## Multi-generation register 2016 – A description of contents and quality

Statistiska centralbyrån

Statistics Sweden

2017

---

Producent  
*Producer* SCB, avdelningen för befolkning och välfärd  
Statistics Sweden, Population and Welfare Department  
SE-701 89 Örebro

Förfrågningar  
*Enquiries* Susanne Dahllöf +46 10 479 62 14  
susanne.dahllof@scb.se  
Anna Engström +46 10 479 67 48  
anna.engstrom@scb.se

Det är tillåtet att kopiera och på annat sätt mångfaldiga innehållet i denna publikation.

Om du citerar, var god uppge källan på följande sätt:

Källa: SCB, *Bakgrundsfakta, Befolknings- och välfärdsstatistik 2017:2, Flergenerationsregistret 2016. En beskrivning av innehåll och kvalitet*

It is permitted to copy and reproduce the contents in this publication.

When quoting, please state the source as follows:

Source: *Statistics Sweden, Background Facts, Population and Welfare Statistics 2017:2, Multi-generation register 2016. A description of contents and quality*

ISSN 1654-4331 (Online)

URN:NBN:SE:SCB-2017-BE96BR1702ENG\_pdf

Denna publikation finns enbart i elektronisk form på [www.scb.se](http://www.scb.se).

This publication is only available in electronic form on [www.scb.se](http://www.scb.se).

## **Foreword**

This edition of Background facts presents, the Multi-Generation Register 2016. This register is of great importance in research, especially in medical and social science research.

The Multi-Generation Register is a register of people who have been registered in Sweden sometime since 1961 and were born in 1932 or later. The register contains links to biological parents. For persons adopted, there is also information about adoptive parents. Links between children and biological parents can be used in medical research where relativity is of central importance. Data on adoptions can be used in different types of research.

This report describes content, development and production of the register.

Statistics Sweden August 2017

Petra Otterblad Olausson

Jenny Lindberg



## Contents

1	Summary .....	7
2	<b>Objectives and background.....</b>	<b>9</b>
3	<b>Development of the Multi-Generation Register .....</b>	<b>13</b>
3.1	Personal records.....	13
3.2	Statistics Sweden's registers .....	14
4	<b>Production of the Multi-Generation Register.....</b>	<b>15</b>
4.1	Production from the TPR system .....	15
4.1.1	Collection of index persons .....	15
4.1.2	Identification of biological father and mother .....	15
4.1.3	Adoptions.....	15
4.2	Supplements from other sources .....	15
5	<b>Results from Multi-Generation Register 2016.....</b>	<b>19</b>
5.1	Biological relationships .....	19
5.1.1	Deceased persons.....	21
5.1.2	Results of supplementary work .....	22
5.2	Adoptions .....	23
6	<b>Contents.....</b>	<b>25</b>
6.1	Statistical measures.....	25
6.1.1	Objects and population .....	25
6.1.2	Variables.....	26
7	<b>Reliability .....</b>	<b>29</b>
7.1	Unreliable sources .....	29
7.1.1	Coverage.....	29
7.1.2	Processing.....	29
7.1.3	Regulations .....	29
8	<b>Timeliness.....</b>	<b>33</b>
8.1	Frequency.....	33
8.2	Production time.....	33
9	<b>Comparability and coherence.....</b>	<b>35</b>
9.1	Comparability over time .....	35
9.2	Coherence with other statistics .....	35
9.2.1	Population & Housing Census parents .....	35
10	<b>Availability .....</b>	<b>41</b>
10.1	Documentation .....	41
10.2	Confidentiality and rules for handling personal information .....	41
10.2.1	The Public Access to Information and Secrecy Act .....	41
10.2.2	Personal Data Act .....	41
10.2.3	Longitudinal databases – key databases .....	42
10.3	Inquiries.....	42
	<b>Appendix 1 Tables showing index persons and biological parents....</b>	<b>43</b>
	Table 1 Number of index persons, by birth year, information on mother and father and on country of birth .....	44
	Table 2 Number of index persons born in Sweden, by birth year and information on mother and father.....	46
	Table 3 Number of foreign-born index persons, by birth year and information on mother and father.....	48

Table 4A Amount of data on index persons born in Sweden, by birth year and source for own country of birth.....	50
Table 4B Amount of data on index persons born in Sweden, by birth year and source for parents' country of birth.....	52
Table 4C Amount of data on index persons born in Sweden, by birth number and source for mother's registration number and birth date.....	54
Table 4D Amount of data on index persons born in Sweden, by birth number and source for father's registration number and birth date.....	56
Table 5A Amount of data on foreign-born index persons, by birth year and source for own country of birth.....	58
Table 5B Amount of data on foreign-born index persons, by birth year and source for parent's country of birth.....	60
Table 5C Amount of data on foreign-born index persons, by birth year and source for mother's registration number and birth date.....	62
Table 5D Amount of data on foreign-born index persons, by birth year and source for father's registration number and birth date.....	64
Table 6 Number of registration number thought to be re-used, by birth year of index person.....	66
Table 7 Average number of children per mother, by birth cohort and country of birth.....	68
Table 8 Average number of children per father, by birth cohort and country of birth.....	71
Table 9 Number of index persons where Population and Housing Census mother and grandmothers are in agreement, broken down by Population and Housing Census year and age group.....	74
Table 10 Number of index persons where Population and Housing Census father and grandfathers are in agreement, broken down by Population and Housing Census year and age group.....	75
Table 11 Number and share of deceased index persons born in Sweden, by birth year and year of death with information on parents.....	76
Table 12 Number of data for deceased index persons born in Sweden, by variables and source.....	78
Table 13A Number and share of deceased index persons born in Sweden, with information on mother, by year of death and source.....	79
Table 13B Number and share of deceased index persons born in Sweden, with information on father, by year of death and source.....	80
Table 14 Number of index persons by number of ancestors in previous generations.....	81
Table 15A Number of index persons by number of siblings and year of birth.....	82
Table 15B Number of index persons by number of siblings and year of birth, percent.....	82
<b>Appendix 2 Tables showing adopted index persons and adoptive parents.....</b>	<b>83</b>
Table 16 Number and share of adopted index persons, by year of birth and country of birth.....	84
Table 17 Number and share of adopted index persons born in Sweden, by year of birth, information on adoptive mother and father and adoption date.....	86
Table 18 Number and share of adopted foreign-born index persons, by year of birth, information on adoptive mother and father and adoption date.....	88
<b>Appendix 3 Personal records.....</b>	<b>91</b>

# 1 Summary

The Multi-Generation Register is a register made up of persons who have been registered in Sweden at some time since 1961 and those who were born in 1932 or later. These are called index persons. The register contains connections between index persons and their biological parents. There are about 11 million index persons in the register. For index persons who were adopted, there is also information on their adoptive parents. There are about 160 000 index persons with information on adoptive mother and/or adoptive father.

The Multi-Generation Register is a part of the register system for Total Population Register, where information comes from the National Tax Board. From the 2002 version onwards, information is also collected for certain index persons from older national registration material. This older material consists of personal records concerning persons who died 1947–1967, and Statistics Sweden's register of births 1961–1967. Every year, a new version of the register is created, including new index persons who immigrated or were born during the year.

Information from the Multi-Generation Register may be disclosed for research and statistical purposes.





## 2 Objectives and background

The Multi-Generation Register is today made up of persons who have been registered in Sweden at some time since 1961 and those who were born in 1932 or later. These are called index persons. The Register contains information on index persons and their biological parents. For index persons who were adopted, there is also information on their adoptive parents. The link between children and biological parents can be used for various purposes, such as medical studies in which the kinship between different individuals plays a crucial role. Information on adoption can be used in various types of research. There are routines to identify the relationship of persons to the index person, e.g. parents, siblings (full or half), children and cousins. After relatives have been identified, information on the individuals can be taken from different registers at Statistics Sweden or another authority.

The Multi-Generation Register is a part of the register system for the Total Population Register. The data comes from the national registration records kept by the National Tax Board. From the 2002 Multi-Generation version onwards, data on biological parents has even been taken for certain index persons from older national registration material and Statistics Sweden's register of births.

A new version of the register is put together in March every year. The first version of the Multi-Generation Register was produced in March 2000 to replace what was known as the Second Generation Register, kept by Statistics Sweden from 1994 to 1999.

Some changes and events in national registration, among other things, which have had an effect on the production of the register are briefly described below.

Year							
1947	1961	1968	1991	1997/98	2000	2002	2004 2013
Personal reg. no.		TPR	New organisation for national registration	Base retrieval/ New TPR	Suppl. basic sample	Develop. 2002-2004	Target population is complemented

### 1947:

Civic registration numbers were introduced at the same time as personal records were established for all persons who were registered in a parish register in Sweden in 1947. If a person was 15 or younger in 1947, their parents were recorded in their personal record. This means that parental information mainly exists for those persons born in 1932 or later.

The work to establish personal records for all the persons who were registered in 1947 was carried out during 1947 and 1948. This means that parental information can be missing for index persons born in 1932 or 1933, because these persons were over 15 when their personal records were established.

Between 1947 and 30 June 1991, personal records have been established for all persons born in Sweden or who had immigrated to Sweden.

**1961:**

To be included in the Multi-Generation Register, index persons must have been registered at some time since 1961. 1961 is the starting point because, before this year, there was essentially no population register in ADP (automatic data processing) format.

**1968:**

At the same time as sections of the national register were computerised in 1967, Statistics Sweden established a register for the nationally registered population in Sweden. The register was called the Total Population Register (TPR). In 1969, Statistics Sweden put together a TPR for the first time with the reference date of 31 December 1968. The TPR was thereafter updated with amendment reports (notifications) received from the national register. These notifications were based on reports from the parish civil registration office, which acted as the local authority for the national register.

In the computerised national register, information on biological or adoptive parents was not included.

**1991:**

A restructuring of the national register was carried out on 1 July 1991. The restructuring meant that national registration at local level was moved from the parish office to the local tax office.

In conjunction with this restructuring, the National Tax Board computerised all personal records for persons who were registered on 30 June 1991. Personal records for persons deceased between 1947 to 30 June 1991 were not computerised. For persons who had emigrated during this time period, the National Tax Board computerised the personal records for those persons born in 1920 or later.

The restructuring also involved an entirely new ADP system for national registration. The new system, comprising of registration and storage of data, included a certain amount of new information, for example data on parents and children.

**1997/1998:**

Also in conjunction with the restructuring of the national register in 1991, a new notification system, with partly new contents, came into operation at the National Tax Board. On 1 November 1997, Statistics Sweden made a base retrieval from the national register of the National Tax Board which consisted of all the persons registered in Sweden at that time. This base retrieval then formed the basis for the new notification system. The changes in notification routines required a total reorganisation of the TPR system. The new TPR system came into operation at the end of 1997 / beginning of 1998. For more information, see Background facts in population and welfare statistics 2002:2 A new system for the Total Population Register - More possibilities and better quality.

**2000:**

To make up for the shortfalls in the data on family relations, which were not included in the original base retrieval from 1997, a special supplementary data retrieval was done at the beginning of 2000. The retrieval concerned data on the biological parents of persons who were either deceased or had emigrated. In addition, a child's relationship to a person other than the parent or guardian was also included. After a government decision, information regarding adoptions and cancelled adoptions with links between the child and adoptive parent were also included.

**2002:**

A study was already carried out in 2001 which looked at the development of the Multi-Generation Register. During the first half of 2002, different tests were done to identify the best procedure for the supplementary work. During the second half of the year, all personal records for persons born from 1932 to 1967, who died during the period from 1947 to 1967, began to be computerised and registered on microfiche. This data is used to supplement the variables for which information is missing in the existing Multi-Generation Register. It was also investigated during 2002 whether Statistics Sweden's registers could be used in this supplementary work.

**2003:**

In March 2003, a new version of the Multi-Generation Register was produced, containing supplementary data from the hitherto computerised personal records and data from Statistics Sweden's register of births.

**2004:**

This year's version contained information from several registered personal records.

**2005:**

The supplementary work on registered personal records was completed.

**2006:**

From July 1st assisted reproduction with donated sperms are allowed for women who have registered their partnership, married or are cohabitating with another woman. The partner/wife and the pregnant woman are both considered parents to the child. The personal identity number on mother in the Multi-Generation register refers to the identity of the woman who gave birth to the child. The other woman and the man who donated the sperms are not registered in the Multi-Generation register.

**2007:**

Data was earlier deleted on persons with re-used registration number. In this year's version, the number of re-used registration numbers have increased and data on parents is no longer deleted. It is up to the researcher to decide how to handle re-used numbers.

**2011:**

Before producing The Multi-Generation Register 2010 Statistics Sweden discovered that some data from The Tax Authority on adoptive persons had been handled in a wrong way. This problem led to missing data on biological parents in some cases. When the problem was identified, data on biological parents could be replaced. The change in data lead to an increase in data on biological parents on adopted persons.

**2013:**

In the Multi-Generation Register 2012 the target population was changed:

- About 2 600 people who emigrated during the period 1961 to 1967 was added and will be included as index persons in future versions.
- About 50 000 people are no longer included as index persons since they emigrated before 1961 and did not return
- First time immigrants during January the year of production of the Multi-Generation Register was included previously as index persons. Starting with this year's version these first-time immigrants are no longer

considered as index persons. This year 4,856 persons immigrated in January 2013 and were not included in the population. These immigrants will however, be included as index persons from next year version of the Multi-Generation Register.

## 3 Development of the Multi-Generation Register

The development of the Multi-Generation Register is of great importance for medical and social science research. The register is already unique in the world and it is possible to develop it further from the national register's source material.

During 1999, discussions started with the Karolinska Institute about the possibilities to make additions and expand the Multi-Generation Register. Additions relate to supplementary information on variables for which information is missing in the existing register. Expansion of the register would mean that the current register population would be increased with further index persons born before 1932 or registered before 1961.

During 2002, work started with adding supplementary data to the register. It is most relevant to add first the registration numbers of biological parents, but even the variable country of birth for both parents and index persons will be added wherever possible.

The work to add supplementary data has been concentrated on those index persons who died before 1 July 1991. This delimitation has been set because all the personal records of persons registered up to 30 June 1991 were computerised when national registration was moved from the parish offices to the National Tax Board. Furthermore, personal records for persons born in 1920 or later who emigrated between 1947 and 30 June 1991 are also computerised. This means that parental information is missing for a large number of index persons who died between 1961 and 30 June 1991, because the records of the deceased persons would not have been computerised.

In order to be able to link index persons and their parents, the following sources are used:

- Personal records
- Statistics Sweden's register of births

The development of the Multi-Generation Register involved a long period of extensive work. Scanning and data registration work of personal records was completed on 31 December 2004. In conjunction with the creation in March 2005 of the Multi-Generation Register 2004, the supplementary work with the register was completed.

### 3.1 Personal records

Before 1 July 1991, personal records with information on population were kept in the national registration system at the parish office (see appendix 3). Among other things, personal records include links between children and parents. Personal records were established for all persons who were registered in Sweden in 1947. After 1947, a personal record was established for every person who was born or who immigrated up to 30 June 1991.

The personal records has been transferred to nine Regional Archive Offices (Landsarkiv). Personal records of all persons deceased 1947-1991 have been transferred.

The supplementary work via personal records has been directed towards those persons who died 1961-1967 and who were born during the period 1932-1967. In addition to those relationships between deceased index persons and their parents, relationships have also been identified between the deceased persons and their children. This means that even information on the children of deceased persons is supplemented, in those cases where information on biological parents has been missing in the Multi-Generation Register.

Personal records for persons deceased between 1947 and 1960 have also been computerised. These persons are not included in the population of the Multi-Generation Register but there can be information in their personal records which can be linked to an index person already existing in the register. Data from personal records for persons deceased between 1947 and 1960 are saved for use in an eventual expansion of the population.

Transferral to microfiche/scanning and computer registration of personal records has been carried out by the research centre SVAR (Swedish Archive Information) in Ramsele, Sweden. The work began during 2002 and continued until 31 December 2004. In conjunction with the creation in March 2005 of the Multi-Generation Register 2005, the supplementary work with the register was completed.

When the computerised material was delivered to Statistics Sweden, logical controls were made and adapted via a regulation system. For a more detailed description of the regulation system, see section 7.1.3 "Regulations".

For more information on scanning and computer registration of personal records, see Background facts on population and welfare statistics 2005 "Data capture of personal records for supplementing the Multi-Generation Register".

### **3.2 Statistics Sweden's registers**

Statistics Sweden's register on births has been used in the supplementary work. The register includes information on the parents of persons born during the period 1961 to 1997. The supplementary work has above all included those index persons who died 1968–1991, born 1961–1991.

In nearly all cases, there is information on the biological mother and, when the mother is married at the time of the child's birth, even information on the husband if, at the time of birth, he is understood to be the father.

The supplementary work from Statistics Sweden's register of births was carried out when the Multi-Generation Register 2002 was created.

Statistics Sweden's register on births has undergone logical controls and has been adapted via a regulation system. For a more detailed description of the regulation system, see section 7.1.3 "Regulations".

## 4 Production of the Multi-Generation Register

### 4.1 Production from the TPR system

The Multi-Generation Register is produced anew from the TPR system once a year.

#### 4.1.1 Collection of index persons

The index persons and their country of birth are taken from three different sections of the TPR system: Registered persons, Deceased persons and Emigrated persons. The section Registered persons consists of all the nationally registered persons in Sweden. Persons appearing in both the Registered persons and Deceased persons sections are counted as living persons. Persons appearing in both the Registered persons and in the Emigrated persons sections are taken out. Persons who appear in both the Deceased persons section and in the Emigrated persons section are also taken out.

Persons with an incorrect date of birth or a registration number which is wrong in some other way are taken out.

#### 4.1.2 Identification of biological father and mother

The biological mother and father of index persons are taken from the TPR system, which identifies the relationship between mother and child and between father and child.

At the same time as the Multi-Generation Register is created from the TPR system, logical controls and adjustments according to a regulation system are carried out. For a more detailed description of the regulation system, see section 7.1.3 "Regulations".

#### 4.1.3 Adoptions

Information on adoptive mother and father is taken from the TPR. Persons with conflicting relationships are taken out. For foreign-born persons, information on immigration is retrieved and can be used to estimate adoption year if this is missing up to 1991. Adoptions for around 200 persons have resulted in the person being adopted by a second adoptive mother and/or adoptive father. These terminated adoptions are put in a separate register.

### 4.2 Supplements from other sources

Information from the TPR system on index persons and their parents is collected in a register called RTBBioforaldrar. Information from personal records on persons and their relationships are found in a register called. PAKT Bioforaldrar. Regarding Statistics Sweden's register of births, relationships are recorded in a register called FoddaBioforaldrar.

All three registers undergo logical controls so that they are all structured in the same way. This has resulted in three different registers with an identical presentation of variables and identical regulations for the creation of variables. For



a more detailed description of the regulation system, see section 7.1.3 “Regulations”.

The three registers include registration number changes which have been reported up to 31 January 2017.

The next step in the production is to combine the above mentioned three registers to one new Multi-Generation Register, which includes supplementary data from both the personal records and the Statistics Sweden register of births. Together with this, a fixed priority order is used to choose which sources should be applied.

The sources are prioritised in the following order:

- 1) Total Population Register
- 2) Personal records
- 3) Statistics Sweden's register of births

Data is taken from the sources in this priority order when producing the Multi-Generation Register. The data is only taken from a lower priority source if it is missing in the higher priority source.

The TPR is the determining information source because the data comes from the national register of the National Tax Board. Data from the TPR has the highest priority. For example, the TPR could have data on the date of birth of an index person's mother but the mother's registration number could be missing. If the personal records or the Statistics Sweden register of births contain the mother's registration number but have a different date of birth from that in the TPR, this registration number is not used in the Multi-Generation Register. In this case, no additional data can be added from the personal records or the register of births.

A special source code has been developed to identify which source the data has come from. The source code is shown for the following variables: index person's country of birth, biological parents' registration numbers and date of birth, and biological parents' countries of birth.

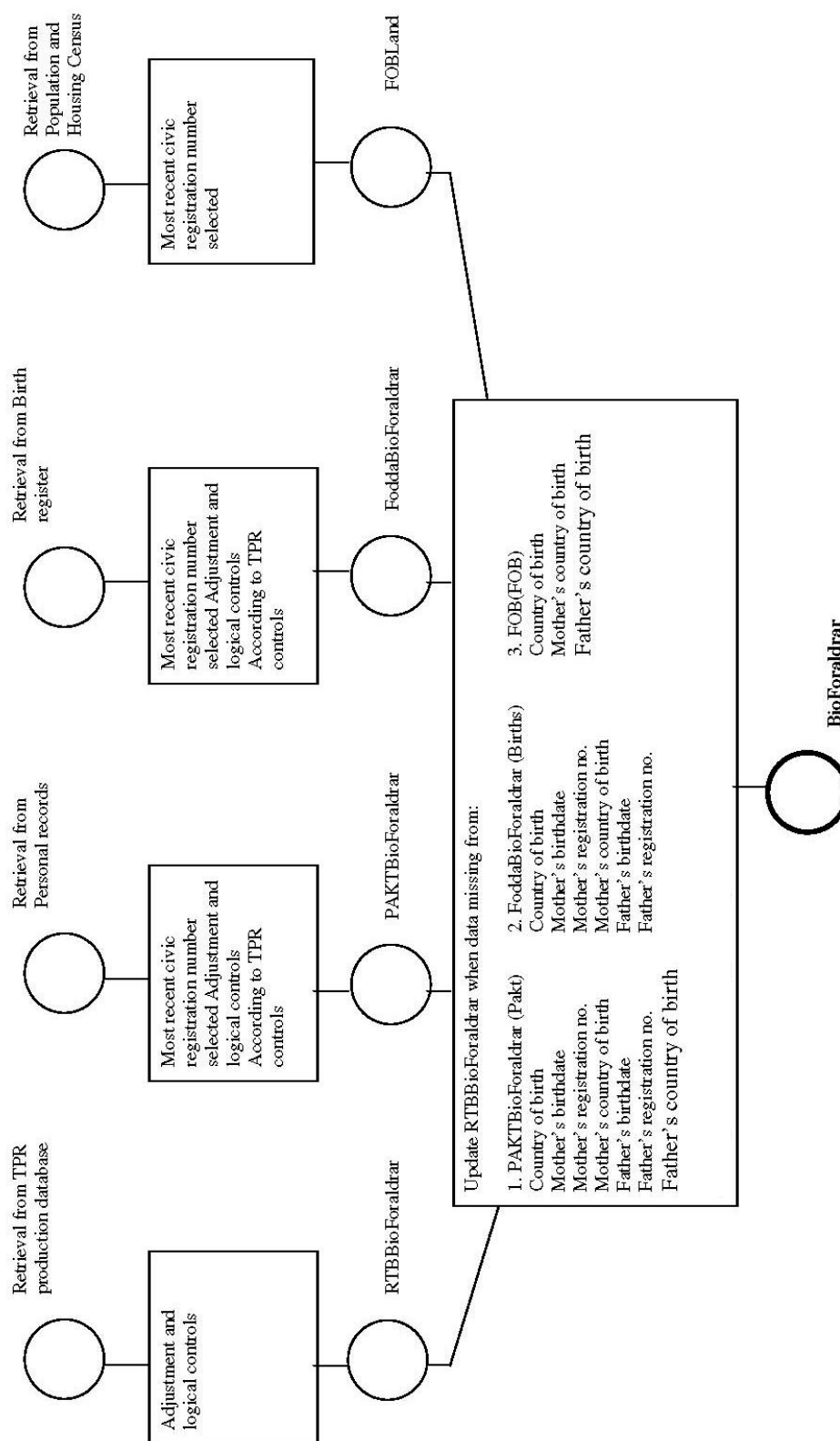
For country of birth, another source is also used, the Population and Housing Census. As a last resort, the country of birth is taken from the 1960 and 1970 Population and Housing Census for those index persons and parents for which data on country of birth is still missing after additions have been made from the personal records and register of births.

A simplified flow chart showing the production of the new version is shown in figure 1.

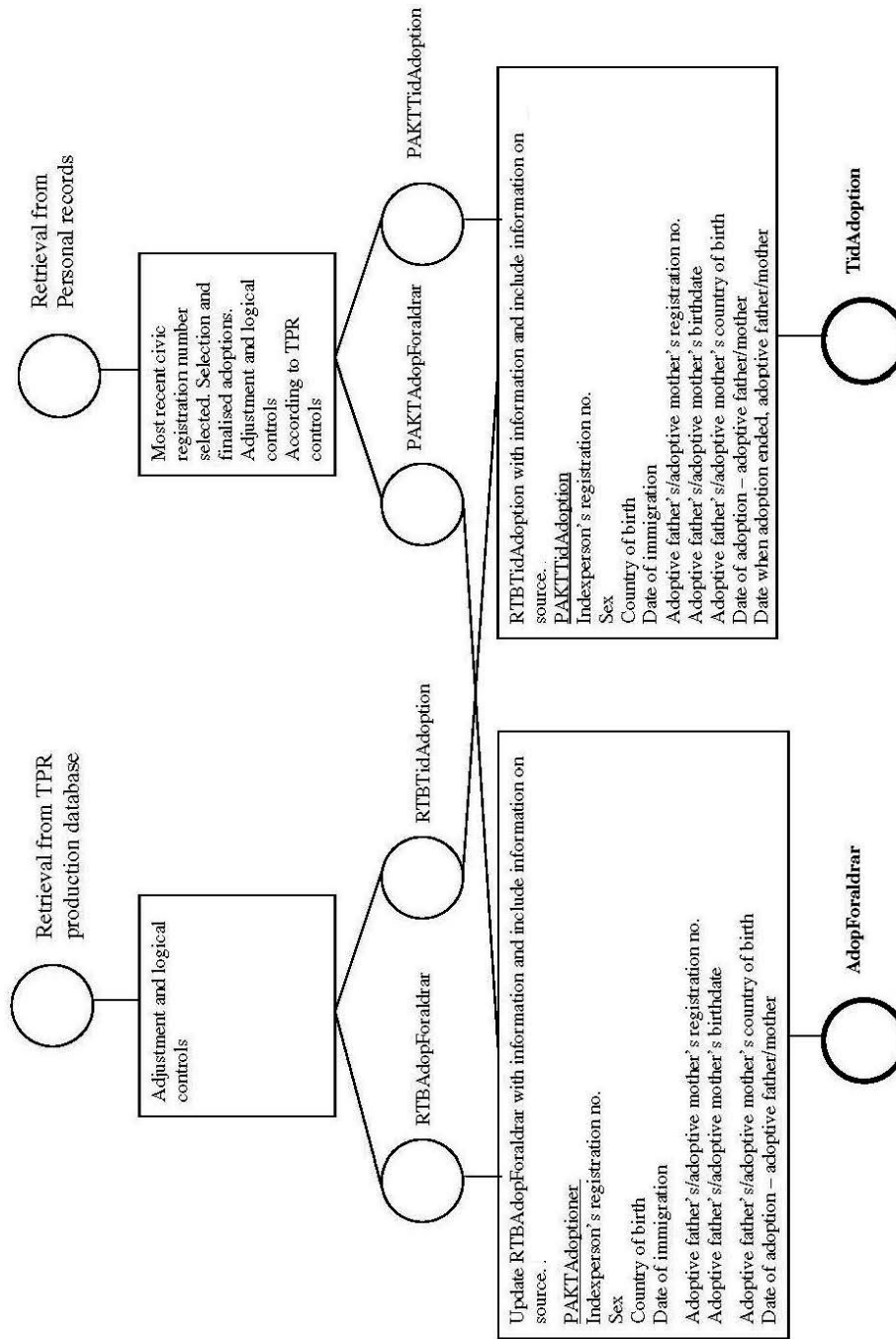
After the collection of information on adoptions from the TPR, another some 100 adopted index persons have been added from the registered personal records. In addition, information on adoptive mother and adoptive father from the personal records has also been supplemented for persons who have already been adopted according to the TPR.

A simplified flow chart showing the production of the new version of register for adopted persons is shown in figure 2.

**Figure 1**  
**Simplified flow of how the Multi-Generation Register, BioForaldrar is produced**



**Figure 2**  
Simplified flow of how the Multi-Generation Register, AdopForaldrar is produced

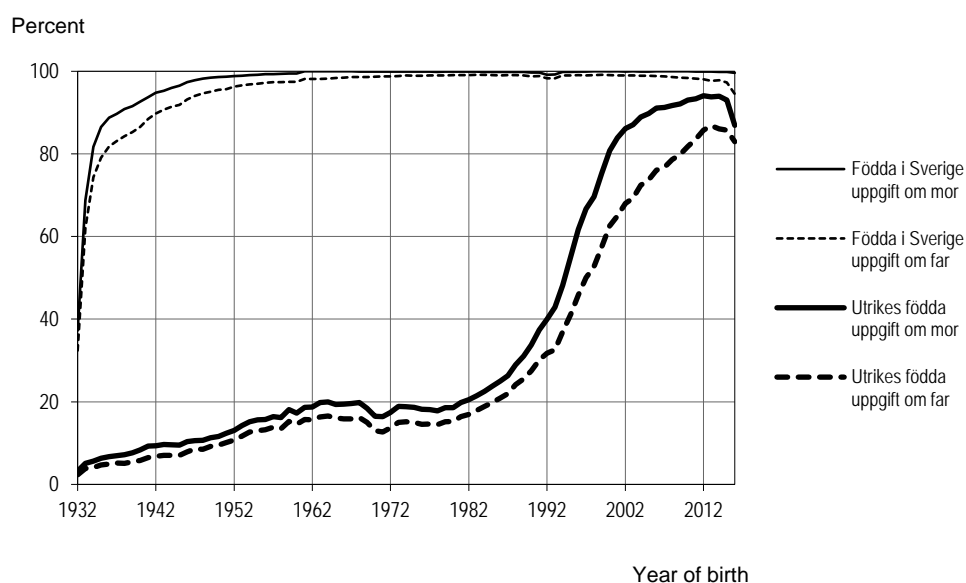


## 5 Results from Multi-Generation Register 2016

### 5.1 Biological relationships

The number of index persons with information on their parents' registration numbers differs among persons born in Sweden and foreign-born persons.

**Graph 1**  
Share of index persons with data on parents



The number of index persons with information on their parents' registration numbers also differs among different subpopulations (see table 1).

**Table 1**  
Share of index persons with registration number for mother and father

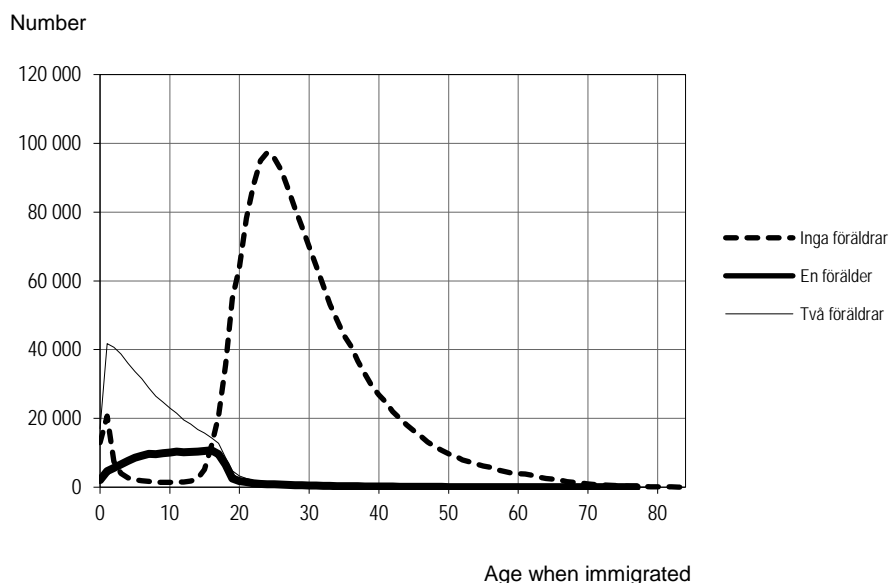
Index persons	Share with registration number for mother (percent)	Share with registration number for father (percent)
Born in Sweden	98	95
Born in Sweden in 1950 or later	100	98
Foreign-born	26	21
Born in Sweden, deceased 1961–2016	85	77
Foreign-born, deceased 1961–2016	16	12
All	82	79

Whether data on parents is available for foreign-born index persons depends on the age at which the person came to Sweden, and if they came alone or together with their parents.

Information on parents for foreign-born persons is missing if they were older than 18 when they immigrated. Info on biological parents in the Multi-Generation Register is often missing for children adopted from other countries since they immigrate to Sweden without their biological parents.

In graph 2, the link between age when immigrated and the existence of data on parents is illustrated.

**Graph 2**  
Number of index persons with data on 0, 1 or 2 parents, by age when immigrated



In table 2 (below) is a presentation of for how many generations indexpersons can be followed. 18 percent of the indexpersons have no information on previous generations because they have no information on parents in the Multi-Generation Register. 33 percent of the indexpersons have information on at least one parent but no information on grandparents. 1 517 indexpersons have information on at least one person in each generation, for five more generations. Those indexpersons are born since 2006 which means that it will take some time before the Multi-Generation Register will include yet another generation. For more information, see Appendix 1.

**Table 2**  
Number of generations per indexperson

Number of generations	Indexpersons	
	Number	Share
0	2 060 371	18
1	3 846 493	33
2	2 936 495	25
3	2 324 001	20
4	409 756	4
5	1 517	0
Total	11 578 633	100

### 5.1.1 Deceased persons

The supplementary work for the Multi-Generation Register has concentrated on deceased index persons. These deceased index persons make an interesting group from a research point-of-view.

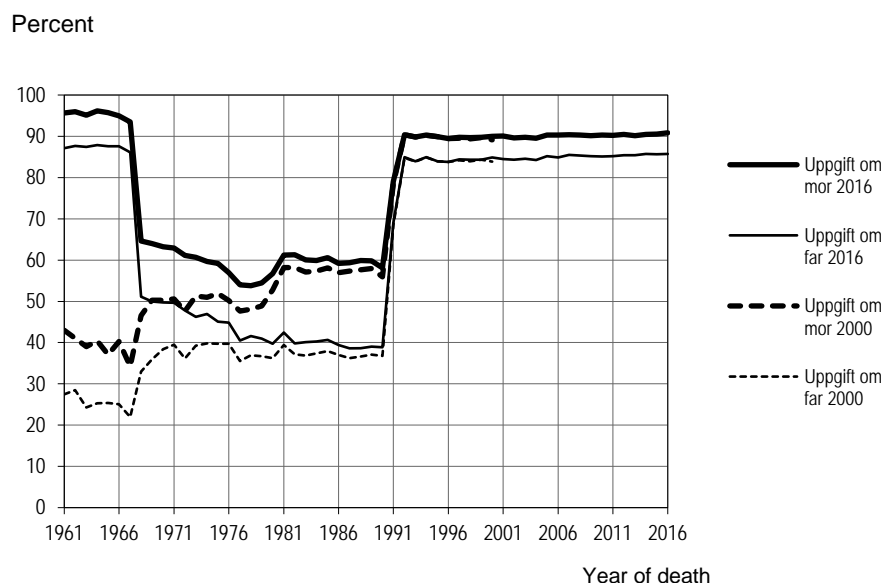
Graph 3 shows how the share of deceased index persons with information on parents has increased as a result of the supplementary work carried out from the personal records and Statistics Sweden's register of births. The supplementary work has been divided into the following two parts.

- 1) Addition of index persons born from 1961 to 1991, who died from 1968 to 1991. Source: Statistics Sweden's register of births
- 2) Addition of index persons born from 1932 to 1967, who died from 1961 to 1967. Source: Personal records

At the same time as the 2002 Multi-Generation Register was created, supplementary work, part 1 was carried out. For the population described in part 2, the supplementary work from personal records was completed when the Multi-Generation Register was created in March 2005.

Graph 3 reports the share of deceased index persons, born in Sweden, with information on parents before and after additions from personal records and Statistics Sweden's register of births.

**Graph 3**  
Deceased persons 1961-2016, born in Sweden. Share with information on parents, before and after additions



In graph 3, it is clearly shown that the number of index persons with information on parents increases for those who have died after 1991. This is because the national registration system was restructured on 1 July 1991, and, at the same time, all personal records for those registered by 1 July 1991 were computerised. For those index persons who died in 1980 or later, certain basic data was taken when the National Tax Board carried out its basic data input at the same time as the restructuring of the national register. This explains why there is a larger number of index persons with information on parents who died in 1980 or later.

Tables 13A and 13B in appendix 1 show the results of the additions from personal records and Statistics Sweden's register of births for index persons who died between 1961 and 2016.

For index persons for which information on parents is missing, it is possible to take data from the Population and Housing Census on what is called Population & Housing Census parents. It should be noted that the biological relationships between children and parents in the Population and Housing Census are not guaranteed. For more information on Population & Housing Census parents, see section 9.2.1 "Population & Housing Census parents".

### 5.1.2 Results of supplementary work

In total, slightly less than 80 000 personal records have been used in the supplementary work for this version of the Multi-Generation Register.

Table 2 shows the number of details, divided by respective source. In total, the Multi-Generation Register contains slightly over 11 million index persons.

**Table 3**  
**Number of details by source**

Variables	Source				
	TPR	Pakt	Births	PHC	Details missing
Country of birth-index person	11 498 862	11 992	9 862	2 126	55 791
Country of birth-father	9 000 738	4 857	14	7 370	2 565 654
Country of birth-mother	9 376 460	3 742	681	4 194	2 193 556
Date of birth-father	9 347 600	18 232	10 767		2 202 034
Date of birth-mother	9 513 536	15 480	11 354		2 038 263
Registration number-father	9 095 832	17 211	12 256		2 453 334
Registration number-mother	9 424 490	15 081	11 727		2 127 335
Total	67 257 518	86 595	56 661	13 690	13 635 967

Information from personal records has generated around 86 000 new details. Slightly more than 56 000 details taken from Statistics Sweden's register of births have been used. Additions to the register from Statistics Sweden's register of births mainly concern index persons who died between 1968 and 1991, and were born between 1961 and 1991.

About 14 000 details on country of birth have been taken from the Population & Housing Census.

In total, about 38 000 index persons have been updated with information on mother's and/or father's registration number through additions from the personal records and Statistics Sweden's register of births. Of these, about 21 000 index persons have been updated with information on registration numbers of one or both parents from the personal records. The corresponding figure for those index persons who have been updated with registration numbers of one or both parents from Statistics Sweden's register of births is about 18 000.

Statistics are shown below on how the information in the Multi-Generation Register 2016 is broken down for index persons.

Number of index persons with all information	8 903 115
of which – all information taken from TPR	8 849 585
– all information taken from personal records	100
Number of index persons missing some information	45 680

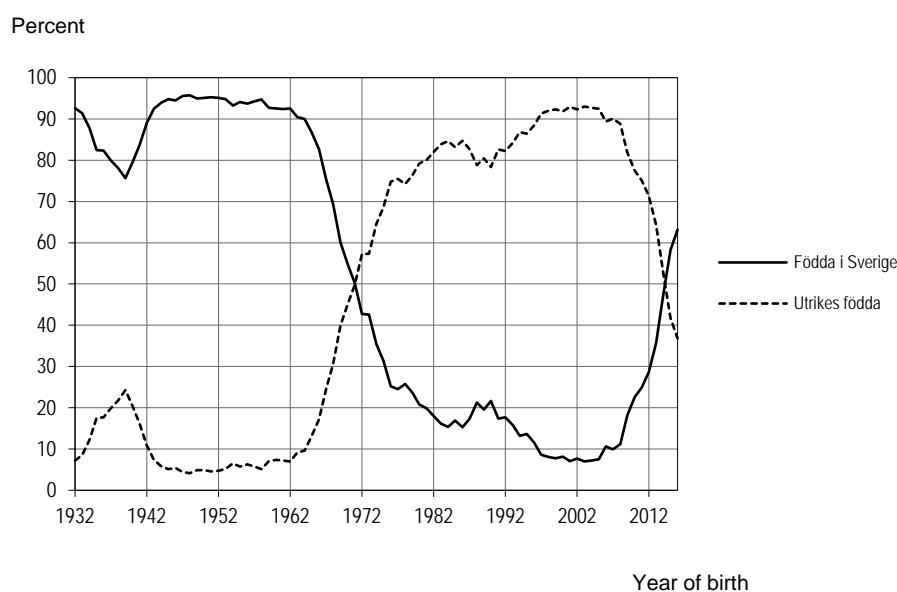
Because Statistics Sweden's register of births does not include information on father's country of birth, there are no index persons who have all their information taken from this register.

## 5.2 Adoptions

In this case, "adopted" relates to persons with at least one adoptive parent.

There are about 160 000 adopted index persons. Of these adopted index persons, slightly over 61 percent were born in Sweden. The number of adopted young persons is very small. There are 76 adopted indexpersons born in 2016 and 48 of these are born in Sweden.

**Graph 4**  
Number of adopted index persons, by country of birth and year of birth



Information on the time of the adoption is available from 1991 onwards. For foreign-born persons, the year of adoption can be estimated with the help of information on the first year of immigration.

In Appendix 2, Tables 16–18, there is information on adopted persons and adoptive parents.





## 6 Contents

### 6.1 Statistical measures

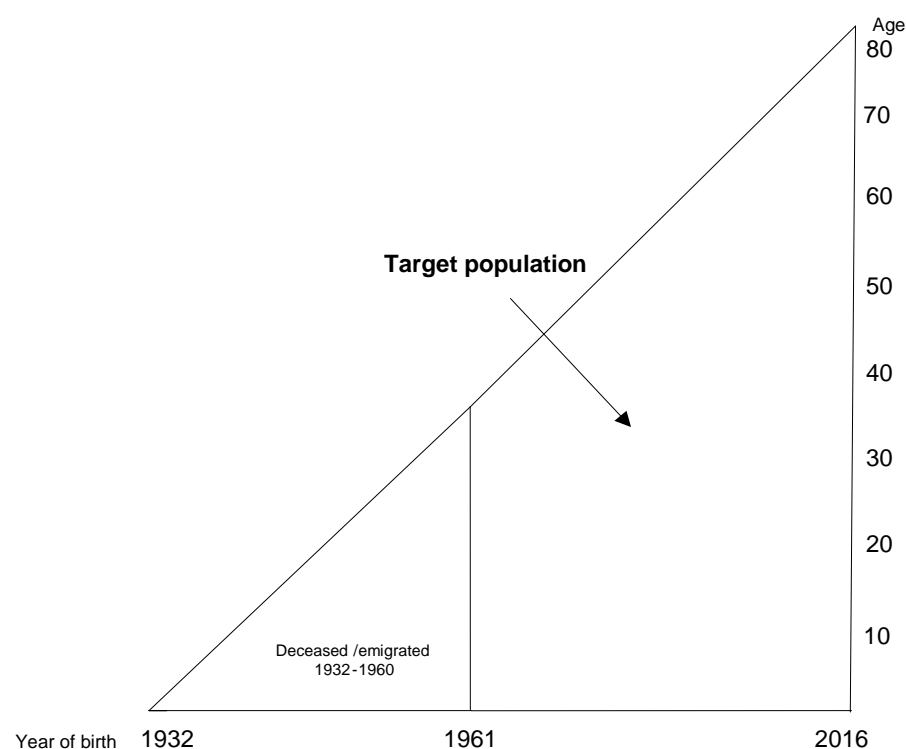
#### 6.1.1 Objects and population

To be included in the Multi-Generation Register 2016, index persons must be born between 1 January 1932 and 31 December 2016. In addition, index persons must have been registered in Sweden at some point between 1 January 1961 and 31 December 2016. These index persons make up the target population.

There are over 11 million index persons in the Multi-Generation Register. Those with information on adoptive mother and/or adoptive father amount to about 159 000.

Graph 5 illustrates the population of the Multi-Generation Register in the form of a Lexis diagram. Lexis diagrams are used to illustrate the link between age and year of birth.

**Graph 5**  
**Target population in the Multi-Generation Register**



### 6.1.2 Variables

The Multi-Generation Register contains the following variables:

- Registration number of index person
- Sex of index person
- Country of birth of index person
- Registration number of biological father
- Date of birth of biological father
- Country of birth of biological father
- Registration number of biological mother
- Date of birth of biological mother
- Country of birth of biological mother
- Source code of country of birth of index person
- Source code of registration number of biological father
- Source code of date of birth of biological father
- Source code of country of birth of biological father
- Source code of registration number of biological mother
- Source code of date of birth of biological mother
- Source code of country of birth of biological mother
- Child's position in mother's family
- Number of child's position in father's family
- Number of children – mother
- Number of children – father
- Registration number of adoptive father
- Date of birth of adoptive father
- Name of country of birth of adoptive father
- Registration number of adoptive mother
- Date of birth of adoptive mother
- Name of country of birth of adoptive mother
- Date of immigration
- Date of adoption – adoptive father
- Date when adoption ended – adoptive father
- Date of adoption – adoptive mother
- Date when adoption ended – adoptive mother
- Source code adopted index persons' civic registration number
- Source code adopted index persons' name of country of birth
- Source code adoptive father's civic registration number
- Source code adoptive father's date of birth
- Source code adoptive father's name of country of birth
- Source code adoptive mother's civic registration number
- Source code adopted mother's date of birth
- Source code adoptive mother's name of country of birth
- Source code date of immigration

- Source code date of adoption – adoptive father
- Source code date when adoption ended – adoptive father
- Source code date of adoption – adoptive mother
- Source code date when adoption ended – adoptive father
- Mark for re-used registration number – index person
- Mark for re-used registration number – biological father
- Mark for re-used registration number – biological mother

A **registration number** is a uniform indication of identity for physical persons. The registration number in its current form was introduced in 1967 but a system with date of birth and a three-digit birth number had been used since 1947. The control digit, which was introduced in 1967, is calculated automatically from the date of birth (six digits) and a birth number (three digits) plus a fourth digit added to the birth number (control digit). The control digit is calculated using the "modulus-10" method.

For the information on a parent's registration number to appear, the parent must have been registered at some point since 1947 onwards when registration numbers were introduced.

**Sex** can be seen from the third digit in the birth number included as part of the registration number.

**Date of birth** is made up of year, month and day. For parents, date of birth information can exist without a complete registration number. For example, parents who were never registered in Sweden have date of birth information. Parents who have been registered in Sweden can also only have date of birth information, for example if the parents died or emigrated before 1947. There are also cases in which the four last digits are not correct in the registration number but the date of birth can still be established.

**Country of birth** shows the country of birth's name and refers to the situation at the time of birth. Until 1947, all persons born abroad were counted as foreign-born. Since 1947, children born abroad are not registered as foreign-born if their mother is registered in Sweden at the time of birth.

Children born in Sweden with an unregistered mother (a refugee) can have Sweden as the country of birth. This applied up to 1997.

**Paternity** is established in the national register in the following way: If the mother is married or recently widowed at the time of the child's birth, the husband is seen to be the father of the child. In other cases, paternity is normally established by acknowledgement or, in certain cases, by a court and is then reported later, not at the time of birth.

A **source code** indicates whether the data is taken from the TPR, personal records or Statistics Sweden's register of births. For the index person's or parents' country of birth, the data can even have the Housing & Population Census as source code.

The **child's position in family** shows the child's ordinal position among biological children in the register for the biological mother and father. The variable is derived.

For index persons with parents born in Sweden in 1915 or later, information on the position in the family is of a good standard, i.e. as long as all siblings in the family are included as index persons in the register. It should be taken into account that all siblings who have not been registered from 1961 onwards are missing completely and that for siblings who have died between 1961 and 1997, information on parents is missing. With the supplementary work to add index persons who died between

1961 and 1967, information on parents will exist for more persons. If the parents were born before 1910, the Multi-Generation Register should not be used to derive siblings.

For index persons with foreign-born parents, the position in the family is of a worse standard. Index persons who immigrated as adults are missing information on the relationship with parents and position in the family. Index persons who immigrated before they were 18 or who were born in Sweden often have information on parents and position in the family. This means that information on siblings can be derived. In this case, the register only includes siblings who were registered from 1961 onwards in Sweden and who, at the time of immigration, were younger than 18 or who were born in Sweden.

When using the child's position in the family or deriving siblings for index persons with foreign-born parents, it should always be taken into consideration that the material being used has larger possibilities for error than material relating to index persons with Swedish-born parents. If parents are under 20 years when they immigrate, the data should have a high level of accuracy.

**Number of children** refers to the number of biological children in the Register for mother and father. The variable is derived. For more information, see the comments relating to the variable "Child's position in family".

**Date of immigration** relates to the date when foreign-born adopted index persons immigrated to Sweden.

**Date** when adoption began and possibly ended for adoptive mother and adoptive father is mainly from 1991 onwards.

**Mark for re-used registration number** is provided for those registration numbers which are suspected to be re-used. For a more detailed explanation, see section 7.1.3 "Regulations".

## 7 Reliability

### 7.1 Unreliable sources

#### 7.1.1 Coverage

In terms of index persons, the Multi-Generation Register covers, for the most part, all persons who have been registered since 1961 after the changes were carried out in producing The Multi-Generation Register 2012.

#### 7.1.2 Processing

The data in the Multi-Generation Register comes from three sources: the TPR, personal records and Statistics Sweden's register of births.

**TPR:** Data registration is carried out by National Tax Board. At the same time as the data is registered, certain checks and corrections are made. When notifications come to Statistics Sweden, a large part of the data is also checked before it is input into the TPR.

**Personal records:** Personal records were established by the parish offices in 1947. After this, a personal record was established for every person who was born or immigrated to Sweden until 30 June 1991. Transfer to microfiche and data registration is carried out by SVAR (Swedish Archive Information) in Ramsele, Sweden. Checks are carried out at the same time as the registration. Further logical checks are carried out when the registered material is delivered to Statistics Sweden. Errors are reported back to SVAR for investigation and correction.

**Statistics Sweden's register of births:** Between 1961 and 1967, all received information on births was coded and registered at Statistics Sweden. Data taken from the "plåtregister" or sheet register are kept by the country offices for registration. Prints from the sheet register were sent to Statistics Sweden where they were checked and coded. The data was then transferred to a magnetic tape.

#### 7.1.3 Regulations

Attention is paid to known changes to registration numbers. This means that an individual should only appear once as an index person. Every individual (index person and parents) appears with the last known registration number.

In the TPR system, there are around 23 000 registration numbers which are suspected to be re-used. This is particularly the case for registration numbers of deceased persons. After a person has died, their registration number is re-used so that another person, who has perhaps immigrated, has been allocated the deceased person's registration number. This means that the parental links in this case will be unreliable. For each registration number which is suspected to be re-used there is a mark in the register. Table 6 in appendix 1 shows the number of suspected re-used registrations numbers, by year of birth of the index person. It is up to the researcher to decide how to handle re-used numbers.

In the national registration, there are gaps which lead to some index persons lacking all data on mother and father in the Multi-Generation Register. The text below describes the regulations which apply to create the Multi-Generation Register and which rules apply when data is taken from the TPR, personal records and Statistics Sweden's register of births.

Rules applying when data is taken from the TPR, personal records and Statistics Sweden's Register of births:

- Fathers with an incomplete date of birth or an unreasonable age are taken out. Fathers that are younger than 14 years or older than 80 years are considered to be of unreasonable age.
- Mothers with an incomplete date of birth or an unreasonable age are taken out. Mothers that are younger than 13 years or older than 60 years are considered of unreasonable age.

Rules applying when data is taken from the TPR:

- For persons who have several differing details on mother and father, the registered mother/father is chosen ahead of the unregistered mother/father. Doubles of mother/father where both are registered or unregistered, and can therefore not be chosen, are taken out.
- Information on parents' country of birth is taken from the Registered persons section in the TPR system. If information on county of birth is present, the country of birth is written in as Sweden. For parents without information on country of birth in the Registered persons section, the country of birth can be taken from the Deceased and Emigrated sections of the TPR system. The following rules apply for country of birth in the TPR system. A person has Sweden as country of birth if they:
  - are born in Sweden and the mother and father are registered in Sweden and are the guardians
  - are born abroad of a mother who is registered in Sweden.

In the Multi-Generation Register, children who are born in Sweden of an unregistered mother also have Sweden as their country of birth. When immigrating, these children are then registered as born in Sweden.

- Adoptive parents with an incomplete date of birth or otherwise invalid registration number are taken out.
- When there is information on several adoptive mothers or adoptive fathers, the registered parents are chosen over the unregistered.

The following rules apply when data is taken from personal records:

- Registration numbers in personal records only consist of the date of birth and a three-digit birth number. This is because the fourth and last digit in the registration number, i.e. the control digit, was first introduced in 1967. Because the personal records relate to those persons who were registered between 1961 and 1967, Statistics Sweden calculates the control digit in the registration number, using the modulus-10 method. In this way, the registration numbers in the personal records are adapted to how the registration numbers were formatted after 1967. When the registration number already has a control digit, it is possible to check that the date of birth and the three-digit birth number are correct. This is not possible if Statistics Sweden has itself calculated the control digit.
- It can occur that there is only a date of birth in the information from the personal records, i.e. no correct registration number. The information can be used once complemented with the parents' date of birth.
- The personal records also contain the country of birth in the form of the county of birth, for those born in Sweden. For those born abroad, the country of birth is written clearly. County of birth has been adapted according to the TPR system and it is interpreted that the country of birth is Sweden. Countries of birth which

are clear in the personal records have also been adapted according to the TPR system rules.

- Information from personal records undergoes logical controls. Below are some examples of the controls which are carried out on the material:
  - date of birth  $\leq$  date of death
  - date of emigration  $>$  date of birth
  - date of emigration  $<$  date of death
  - information on sex registered from the personal records and is controlled through a calculation from the registration number

The rules applying when data is taken from Statistics Sweden's register of births:

- The fourth and final digit in the registration number, i.e. the control digit, was introduced in 1967. The control digit in the registration number for persons born from 1961 to 1967, and who are in the Statistics Sweden register of births, is calculated using the modulus-10 method. In this way, all registration numbers taken from the register of births are adapted to how registration numbers were formatted after 1967. When the registration number already has a control digit, it is possible to check that the date of birth and the three-digit birth number are correct. This is not possible if Statistics Sweden has itself calculated the control digit.
- In the register of births, there is a code for the mother's county of birth. If there is information on the mother's county of birth, the country of birth of the mother is written as Sweden. There is no information in the register of births on the father's county or country of birth.





## 8 Timeliness

### 8.1 Frequency

The Multi-Generation Register is produced annually.

### 8.2 Production time

The production time for the Multi-Generation Register is approximately 3 weeks.

There is no official date for when the register should be ready. Usually yearly versions of the register have been ready for use during April the following year. The registers refer to known conditions in December the year before.



## 9 Comparability and coherence

### 9.1 Comparability over time

The Multi-Generation Register was put together for the first time in 2000 and contained national registration data until 31 December 1999. Since then, an annual register has been produced and, since the Multi-Generation Register 2002, is complemented information from the TPR with information from personal records and from Statistics Sweden's register of births. Information in the Multi-Generation Register depends on the definitions and rules which are used in each system. See section 7.1.3 "Regulations".

In addition to the rules which are used when putting together the Multi-Generation Register, there are a number of events which had a strong impact on national registration and therefore also on the Multi-Generation Register. These events are described in chapter 2 "Objectives and Background".

The number of index persons increases for each year of the register. Newborn persons and immigrants contribute to this increase; Newborn persons by increasing the number of index persons born during the previous year, and immigrants by increasing the numbers in general.

During a lifetime, the same person can have the need to change registration number. When the Multi-Generation Register is put together, attention is paid to these changed registration numbers. For persons changing registration number, it is possible to show all registration numbers. In the register, persons appear with their last known registration number.

### 9.2 Coherence with other statistics

The Multi-Generation Register is primarily intended for research and therefore coherence with other registers is, in many cases, essential. The register is used, for example, in medical studies where kinship is of key importance. An example of registers in which background information and result data can be taken for the study populations are the Population and Housing Census, the Cancer Register of the National Board of Health and Welfare or other medical registers.

Use with other registers is only possible after clearance for release from the respective authority in each specific case.

#### 9.2.1 Population & Housing Census parents

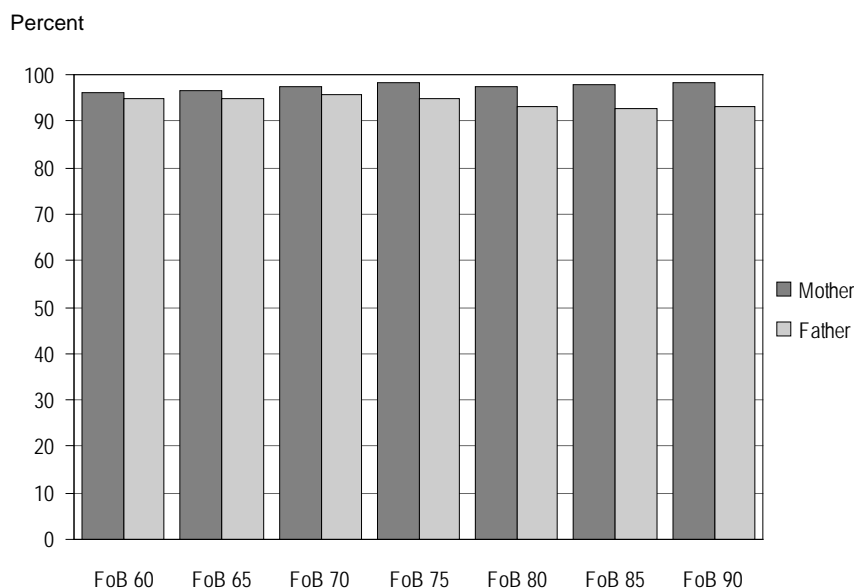
The Population and Housing Censuses from 1960-1990 contain data on which persons belong to the same household dwelling, i.e. that live in the same dwelling. From these data on household situation and civil status, information on Population & Housing Census (PHC) parents and PHC children can be derived. *It should be noted that relationships in the PHC are not confirmed, which means that no biological relationship between children/siblings and parents can be recorded.*

A PHC parent is the adult man or woman who belongs to the same household dwelling as the child. The data are derived using the following variables: household situation, civil status and age. The definition of a PHC parent/sibling differs somewhat between the annual versions of the PHC.

Information on a PHC parent can be used where appropriate, i.e. in studies on heritage versus environment.

A comparison has been done among those with information on both biological parent and PHC parent to see how great an extent the PHC parent is in agreement with biological parent (see graph 6).

**Graph 6**  
**Share of index persons where PHC mother and PHC father are in agreement with biological mother and biological father, by census year**



The graph shows that PHC mother and biological mother are in agreement for 96 to 98 percent of index persons. The share of index persons where information on PHC father and biological father are in agreement is somewhat lower, between 93 and 96 percent.

For those index persons where information on PHC parent and biological parent is not in agreement, further analysis has been done to see if the PHC parent is a grandmother or a grandfather (see table 4A and 4B).

**Table 4A**  
**Number of index persons where PHC mother and biological mother or grandmother agree**

PHC	PHC mother and biological mother agree		PHC mother and grandmother agree	
	Number of index persons	Share (percent)	Number of index persons	Share (percent)
60	2 185 795	96	15 476	0,7
65	2 297 052	96	25 809	1,1
70	2 342 442	98	20 826	0,9
75	2 222 301	98	12 563	0,6
80	2 202 867	97	15 002	0,7
85	2 131 150	98	9 820	0,5
90	2 057 426	98	6 363	0,3

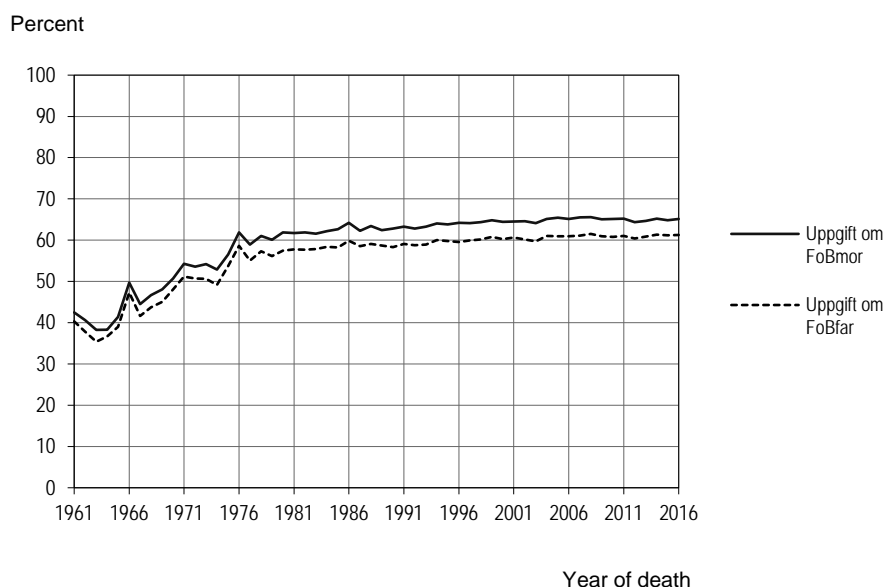
**Table 4B**  
**Number of index persons where PHC father and biological father or grandfather agree**

PHC	PHC father and biological father agree		PHC father and grandfather agree	
	Number of index persons	Share (percent)	Number of index persons	Share (percent)
60	2 014 967	95	11 137	0,5
65	2 104 965	95	18 427	0,8
70	2 131 291	96	14 648	0,7
75	2 008 380	95	8 571	0,4
80	1 894 994	93	10 902	0,5
85	1 807 223	93	6 619	0,3
90	1 743 322	93	3 894	0,2

There are considerable differences, depending on the age of index persons. The younger an index person, the more common that PHC parent is a grandparent (see appendix 1, table 9 and 10).

Graph 7 shows the number of deceased index persons, born in Sweden, with information on Population and Housing Census parents from the census between 1960-1990.

**Graph 7**  
**Deceased persons 1961-2016, born in Sweden. Share with information on PHC parents, 1960-1990**



### Definitions in Population & Housing Census 1960 – Population & Housing Census 1970

#### *PHC parents*

A PHC parent is the person in charge of the property or spouse to the person in charge. The person in charge of the property is the person who is renting, who owns or, in some other way, is responsible for the entire property. In existing marriages, the man is generally considered the person in charge of the property.

If the household situation is not known, civil status is used to create the PHC parent. A person should be married, a widow / widower or divorced in order to be counted as a PHC parent.

#### *PHC sibling (children)*

The person should be the child of the person in charge of the property and / or their spouse and should be unmarried. The person can also be related to the person in charge of the property and/or their spouse in another way and be 17 years of age or younger and unmarried.

#### *Grandchildren*

The person should be the grandchild of the persons in charge of the property and/or their spouse and be unmarried. If there is more than one grandchild, a PHC sibling is created for this.

### Definitions in Population & Housing Census 75

#### *PHC parents*

A PHC parent is the household owner or the person who is married or living with the property owner. The term property owner refers to the person among the inhabitants that rents, owns or in some other way is in charge of the property.

If the household situation is not known, civil status is used to create the PHC parent. A person should be married, a widow / widower or divorced in order to be counted as a PHC parent.

*PHC sibling (children)*

The person should be the child of the property owner and/or the person who is married or living with the property owner and should be unmarried. The person can also be any other inhabitant of the household who is aged 17 or younger and unmarried.

**Definitions in Population & Housing Census 1980 – Population & Housing Census 1990**

*PHC parents*

The PHC parent is a reference person in the household or the person married or living with the reference person. The term reference person refers to the person who in the individual's questionnaire is noted as married or living together. In the Population & Housing Census 85 and the Population & Housing Census 90, the oldest person among those noted as married or living together has been selected as the reference person. Both men and women are reference persons in the Population & Housing Census 80. In a household without persons who are married or living together, the oldest person in the household has been selected as the reference person.

If the household situation is not known, civil status is used to create the PHC parent. A person should be married, a widow / widower or divorced in order to be counted as a PHC parent.

*PHC sibling (children)*

The person should be a child to someone in the household and be unmarried. The person can also be any other person living in the household who is aged 17 or younger and unmarried.





## 10 Availability

### 10.1 Documentation

The work with the production and development of the Multi-Generation Register has resulted in the following published reports.

- Background facts on population and welfare statistics 2001:5, Multi-Generation Register
- Background facts on population and welfare statistics 2001:6, Study on the supplementary work and expansion of the Multi-Generation Register
- Background facts on population and welfare statistics 2002:1, Supplementary work on the Multi-Generation Register, results from test registration of personal records of deceased persons 1947-1967

Background facts with descriptions in English of The Multi-Generation Register 2002-2012 are published with the following names:

- Bakgrundsfakta till Befolknings- och Vårdsstatistik ÅÅÅÅ:x "Multi-Generation Register ÅÅÅÅ – A description of contents and quality"

### 10.2 Confidentiality and rules for handling personal information

Unidentifiable individual information from the Multi-Generation Register can be requested for research and statistical purposes. Every request to Statistics Sweden on the release of individual information undergoes a confidentiality test. Statistics Sweden is subject to statistical confidentiality rules which can be found in to 24 Chapter 8§ of the Public Access to Information and Secrecy Act (2009:400). For the automatic handling of personal information, the rules in the Personal Data Act (1998:204) also apply.

#### 10.2.1 The Public Access to Information and Secrecy Act

According to 24 Chapter 8§ of the Public Access to Information and Secrecy Act (2009:400), confidentiality applies in specific activities of authorities that involve the production of statistics on data showing individual personal or economic situations and, which can be identified as belonging to that individual. The principal rule is therefore that data in statistical activities is secret and should not be given out. Exceptions to this rule have been made for information needed for research or statistical purposes, which cannot be directly linked to the individual through name, other identity symbol or comparable situation. In these cases, information can be given out, if it is clear that it can be revealed without the persons concerned or connected to the information being in any way harmed or injured. The term individual relates to physical as well as legal persons.

Before any information is issued under one of the exceptions, a judgement must always be made on the risk for harm or injury to the persons concerned by or connected with the information. It should be clear that the issuing of information can be done without risk.

#### 10.2.2 Personal Data Act

The Personal Data Act (1998:204) contains certain fundamental decisions on the handling of personal information; among other things, that the handling should be

legal and carried out in the correct manner and according to best practice. The information which is handled should be adequate and relevant. The information should be handled only if it is essential to the objectives of the activity.

Special rigorous rules apply for the handling of sensitive personal information, i.e. information on race or ethnic background, political views, religious or philosophical convictions, trade union membership and health or sexual circumstances. The handling of sensitive personal information for research purposes is allowed after explicit consent from the registered person. It is allowed even without such consent, if it is essential and approved by a research ethics committee or is recorded in advance to the Data Inspection Board, for advance control.

In the Official Statistics Ordinance (2001:100), there are specific rules outlining the extent to which sensitive information can be handled in the production of official statistics within the different statistical areas. Sensitive information, which can be handled for the production of official statistics, can also be used for other statistics and research. According to the Personal Data Act, sensitive personal information can always be handled with the explicit consent from the registered person.

### **10.2.3 Longitudinal databases – key databases**

According to the Official Statistics Act (2001:99), which came into force in April 2001, it is possible, for research and statistics purposes, to give out data with a serial number, which can be linked to a personal registration or organisation number using a code at the authority responsible for the statistics. Such information can be given out if the receiver has a specific need to add additional material later, such as the next year's information.

This release of unidentifiable material with a code means that the information, according to the Personal Data Act, is personal information for the recipient. The receiver then becomes responsible for the personal information and must follow the rules in the Personal Data Act.

## **10.3 Inquiries**

A written request for the information required should be sent Statistics Sweden. More information about how to request data can be found on the web-site [www.scb.se](http://www.scb.se). When the information is to be used for research, Statistics Sweden would like to see a project description attached. If the research project has been tested by an ethics committee, the application and decision should also be attached. In cases where the information can be given out, Statistics Sweden will send an offer specifying the delivery conditions, time for delivery and price.

# Appendix 1

## Tables showing index persons and biological parents

**Multi-Generation Register version 2016-12-31**

**Table 1**  
**Number of index persons, by birth year, information on mother and father and on country of birth**

Birth year	Number of index persons	Information on parents				Information on country of birth					
		Information on mother		Information on father		Born in Sweden		Foreign-born		Unknown	
		Number	Share	Number	Share	Number	Share	Number	Share	Number	Share
1932	98 666	30 927	0,31	26 824	0,27	81 580	0,83	15 895	0,16	1 191	0,01
1933	94 988	54 358	0,57	48 922	0,52	77 829	0,82	15 804	0,17	1 355	0,01
1934	96 852	64 726	0,67	58 737	0,61	77 974	0,81	17 362	0,18	1 516	0,02
1935	98 952	69 565	0,70	63 435	0,64	79 064	0,80	18 071	0,18	1 817	0,02
1936	102 945	74 317	0,72	68 260	0,66	82 256	0,80	18 702	0,18	1 987	0,02
1937	106 246	76 675	0,72	70 724	0,67	83 838	0,79	20 054	0,19	2 354	0,02
1938	111 208	81 123	0,73	74 903	0,67	87 566	0,79	20 932	0,19	2 710	0,02
1939	116 558	85 366	0,73	79 094	0,68	91 281	0,78	22 176	0,19	3 101	0,03
1940	115 627	85 322	0,74	79 234	0,69	90 073	0,78	22 283	0,19	3 271	0,03
1941	121 871	90 618	0,74	84 998	0,70	94 273	0,77	23 983	0,20	3 615	0,03
1942	134 599	105 337	0,78	99 309	0,74	108 814	0,81	22 704	0,17	3 081	0,02
1943	146 987	116 313	0,79	110 191	0,75	119 477	0,81	24 277	0,17	3 233	0,02
1944	155 809	124 907	0,80	118 415	0,76	127 514	0,82	25 359	0,16	2 936	0,02
1945	157 892	126 530	0,80	119 872	0,76	128 324	0,81	27 000	0,17	2 568	0,02
1946	160 139	126 805	0,79	120 731	0,75	126 837	0,79	30 894	0,19	2 408	0,02
1947	158 024	124 303	0,79	118 923	0,75	123 418	0,78	32 622	0,21	1 984	0,01
1948	156 332	123 005	0,79	117 949	0,75	121 490	0,78	33 143	0,21	1 699	0,01
1949	150 655	118 541	0,79	113 877	0,76	116 447	0,77	32 894	0,22	1 314	0,01
1950	144 849	113 413	0,78	109 305	0,75	110 988	0,77	32 741	0,23	1 120	0,01
1951	138 783	108 920	0,78	104 952	0,76	106 126	0,76	31 758	0,23	899	0,01
1952	139 315	109 648	0,79	106 097	0,76	106 419	0,76	32 204	0,23	692	0,00
1953	139 414	110 337	0,79	106 952	0,77	106 594	0,76	32 180	0,23	640	0,00
1954	136 103	106 437	0,78	103 259	0,76	101 992	0,75	33 590	0,25	521	0,00
1955	138 919	109 190	0,79	105 982	0,76	104 397	0,75	34 006	0,24	516	0,00
1956	140 528	110 350	0,79	107 239	0,76	105 217	0,75	34 786	0,25	525	0,00
1957	140 079	109 868	0,78	106 865	0,76	104 357	0,74	35 139	0,25	583	0,00
1958	138 496	108 749	0,79	105 647	0,76	103 249	0,75	34 638	0,25	609	0,00
1959	139 204	109 296	0,79	106 185	0,76	102 797	0,74	35 652	0,26	755	0,01
1960	139 625	107 327	0,77	104 168	0,75	100 425	0,72	38 230	0,27	970	0,01
1961	142 468	112 260	0,79	109 183	0,77	104 686	0,73	36 960	0,26	822	0,01
1962	146 858	115 068	0,78	111 854	0,76	107 108	0,73	38 951	0,27	799	0,01
1963	153 419	121 371	0,79	117 896	0,77	112 865	0,74	39 807	0,26	747	0,00
1964	164 415	131 338	0,80	127 763	0,78	122 558	0,75	41 188	0,25	669	0,00
1965	165 130	131 394	0,80	127 982	0,78	122 906	0,74	41 716	0,25	508	0,00
1966	164 830	131 290	0,80	127 930	0,78	122 987	0,75	41 519	0,25	324	0,00
1967	163 830	129 837	0,79	126 551	0,77	121 396	0,74	42 178	0,26	256	0,00
1968	156 858	121 910	0,78	118 815	0,76	113 206	0,72	43 423	0,28	229	0,00
1969	150 516	115 605	0,77	112 720	0,75	107 708	0,72	42 642	0,28	166	0,00
1970	153 172	117 298	0,77	114 443	0,75	110 260	0,72	42 811	0,28	101	0,00
1971	156 294	121 404	0,78	118 492	0,76	114 628	0,73	41 597	0,27	69	0,00
1972	155 566	119 940	0,77	117 056	0,75	112 513	0,72	43 010	0,28	43	0,00
1973	152 693	117 868	0,77	115 012	0,75	109 861	0,72	42 781	0,28	51	0,00
1974	155 165	118 501	0,76	115 810	0,75	110 110	0,71	45 004	0,29	51	0,00
1975	149 340	112 233	0,75	109 579	0,73	103 824	0,70	45 463	0,30	53	0,00
1976	144 194	106 720	0,74	104 113	0,72	98 521	0,68	45 624	0,32	49	0,00
1977	142 507	104 499	0,73	102 015	0,72	96 245	0,68	46 218	0,32	44	0,00
1978	141 193	101 823	0,72	99 414	0,70	93 459	0,66	47 686	0,34	48	0,00
1979	144 866	105 371	0,73	102 832	0,71	96 467	0,67	48 357	0,33	42	0,00
1980	148 827	106 804	0,72	104 241	0,70	97 318	0,65	51 457	0,35	52	0,00
1981	143 653	103 980	0,72	101 518	0,71	94 279	0,66	49 324	0,34	50	0,00

Table 1 (cont.)

Birth year	Number of index persons	Information on parents				Information on country of birth					
		Information on mother		Information on father		Born in Sweden		Foreign-born		Unknown	
		Number	Share	Number	Share	Number	Share	Number	Share	Number	Share
1982	144 891	103 699	0,72	101 098	0,70	93 166	0,64	51 683	0,36	42	0,00
1983	143 358	102 905	0,72	100 329	0,70	91 960	0,64	51 346	0,36	52	0,00
1984	145 585	105 615	0,73	103 020	0,71	94 119	0,65	51 411	0,35	55	0,00
1985	148 567	110 392	0,74	107 626	0,72	98 654	0,66	49 869	0,34	44	0,00
1986	150 152	113 967	0,76	111 154	0,74	102 120	0,68	47 991	0,32	41	0,00
1987	149 925	116 628	0,78	113 821	0,76	104 934	0,70	44 950	0,30	41	0,00
1988	155 056	124 718	0,80	121 726	0,79	112 527	0,73	42 477	0,27	52	0,00
1989	155 567	128 487	0,83	125 330	0,81	116 558	0,75	38 958	0,25	51	0,00
1990	160 937	136 685	0,85	133 246	0,83	124 842	0,78	36 057	0,22	38	0,00
1991	156 616	135 971	0,87	132 519	0,85	124 233	0,79	32 336	0,21	47	0,00
1992	152 362	133 917	0,88	130 496	0,86	123 443	0,81	28 871	0,19	48	0,00
1993	144 365	128 605	0,89	124 840	0,86	118 343	0,82	25 974	0,18	48	0,00
1994	137 089	124 179	0,91	120 430	0,88	112 519	0,82	24 523	0,18	47	0,00
1995	126 930	116 331	0,92	112 193	0,88	103 675	0,82	23 222	0,18	33	0,00
1996	117 844	109 225	0,93	104 853	0,89	95 541	0,81	22 266	0,19	37	0,00
1997	112 535	105 229	0,94	100 752	0,90	90 790	0,81	21 704	0,19	41	0,00
1998	111 876	105 161	0,94	100 612	0,90	89 822	0,80	22 033	0,20	21	0,00
1999	109 695	104 572	0,95	100 123	0,91	89 044	0,81	20 632	0,19	19	0,00
2000	110 964	107 175	0,97	102 805	0,93	91 355	0,82	19 592	0,18	17	0,00
2001	110 106	107 212	0,97	102 956	0,94	92 274	0,84	17 818	0,16	0	0,00
2002	113 742	111 370	0,98	107 397	0,94	96 827	0,85	16 895	0,15	20	0,00
2003	116 522	114 398	0,98	110 533	0,95	100 327	0,86	16 180	0,14	0	0,00
2004	118 229	116 412	0,98	112 696	0,95	102 184	0,86	16 032	0,14	13	0,00
2005	118 448	116 782	0,99	113 156	0,96	102 547	0,87	15 880	0,13	21	0,00
2006	122 285	120 908	0,99	117 441	0,96	107 038	0,88	15 226	0,12	21	0,00
2007	122 988	121 703	0,99	118 293	0,96	108 514	0,88	14 452	0,12	22	0,00
2008	124 160	122 999	0,99	119 712	0,96	110 471	0,89	13 671	0,11	18	0,00
2009	125 430	124 415	0,99	121 212	0,97	112 955	0,90	12 462	0,10	13	0,00
2010	128 280	127 450	0,99	124 290	0,97	116 798	0,91	11 473	0,09	9	0,00
2011	123 022	122 302	0,99	119 352	0,97	112 911	0,92	10 101	0,08	10	0,00
2012	123 306	122 724	1,00	119 791	0,97	114 270	0,93	9 030	0,07	6	0,00
2013	121 747	121 241	1,00	118 181	0,97	114 687	0,94	7 048	0,06	12	0,00
2014	121 669	121 183	1,00	118 341	0,97	115 921	0,95	5 741	0,05	7	0,00
2015	119 510	119 080	1,00	115 925	0,97	116 150	0,97	3 348	0,03	12	0,00
2016	119 416	118 871	1,00	112 782	0,94	118 443	0,99	961	0,01	12	0,00
Total	11 578 633	9 451 298	0,82	9 125 299	0,79	8 963 483	0,77	2 559 008	0,22	56 142	0,00

**Table 2**  
**Number of index persons born in Sweden, by birth year and information on mother and father**

Birth year	Number of index persons	Information on mother		Information on father	
		Number	Share	Number	Share
1932	81 580	30 394	0,37	26 437	0,32
1933	77 829	53 529	0,69	48 288	0,62
1934	77 974	63 710	0,82	57 990	0,74
1935	79 064	68 390	0,86	62 557	0,79
1936	82 256	73 014	0,89	67 291	0,82
1937	83 838	75 229	0,90	69 658	0,83
1938	87 566	79 570	0,91	73 792	0,84
1939	91 281	83 611	0,92	77 840	0,85
1940	90 073	83 421	0,93	77 912	0,86
1941	94 273	88 342	0,94	83 402	0,88
1942	108 814	103 165	0,95	97 725	0,90
1943	119 477	113 886	0,95	108 416	0,91
1944	127 514	122 392	0,96	116 562	0,91
1945	128 324	123 882	0,97	117 919	0,92
1946	126 837	123 501	0,97	118 193	0,93
1947	123 418	120 713	0,98	116 020	0,94
1948	121 490	119 316	0,98	115 017	0,95
1949	116 447	114 638	0,98	110 684	0,95
1950	110 988	109 448	0,99	106 022	0,96
1951	106 126	104 758	0,99	101 550	0,96
1952	106 419	105 230	0,99	102 475	0,96
1953	106 594	105 477	0,99	102 963	0,97
1954	101 992	101 089	0,99	98 780	0,97
1955	104 397	103 550	0,99	101 266	0,97
1956	105 217	104 502	0,99	102 303	0,97
1957	104 357	103 671	0,99	101 615	0,97
1958	103 249	102 648	0,99	100 529	0,97
1959	102 797	102 221	0,99	100 214	0,97
1960	100 425	99 904	0,99	97 853	0,97
1961	104 686	104 663	1,00	102 761	0,98
1962	107 108	107 089	1,00	105 139	0,98
1963	112 865	112 842	1,00	110 818	0,98
1964	122 558	122 537	1,00	120 420	0,98
1965	122 906	122 882	1,00	120 890	0,98
1966	122 987	122 961	1,00	121 114	0,98
1967	121 396	121 365	1,00	119 685	0,99
1968	113 206	113 122	1,00	111 636	0,99
1969	107 708	107 617	1,00	106 230	0,99
1970	110 260	110 182	1,00	108 823	0,99
1971	114 628	114 541	1,00	113 205	0,99
1972	112 513	112 432	1,00	111 150	0,99
1973	109 861	109 787	1,00	108 591	0,99
1974	110 110	110 043	1,00	108 984	0,99
1975	103 824	103 757	1,00	102 739	0,99
1976	98 521	98 415	1,00	97 481	0,99
1977	96 245	96 144	1,00	95 273	0,99
1978	93 459	93 347	1,00	92 511	0,99
1979	96 467	96 387	1,00	95 515	0,99
1980	97 318	97 230	1,00	96 404	0,99
1981	94 279	94 183	1,00	93 437	0,99

Table 2 (cont.)

Birth year	Number of index persons	Information on mother		Information on father	
		Number	Share	Number	Share
1982	93 166	93 088	1,00	92 316	0,99
1983	91 960	91 880	1,00	91 155	0,99
1984	94 119	94 012	1,00	93 307	0,99
1985	98 654	98 531	1,00	97 743	0,99
1986	102 120	101 968	1,00	101 110	0,99
1987	104 934	104 798	1,00	103 930	0,99
1988	112 527	112 393	1,00	111 464	0,99
1989	116 558	116 383	1,00	115 353	0,99
1990	124 842	124 507	1,00	123 339	0,99
1991	124 233	123 841	1,00	122 766	0,99
1992	123 443	122 364	0,99	121 314	0,98
1993	118 343	117 443	0,99	116 364	0,98
1994	112 519	112 346	1,00	111 360	0,99
1995	103 675	103 523	1,00	102 633	0,99
1996	95 541	95 457	1,00	94 635	0,99
1997	90 790	90 728	1,00	89 867	0,99
1998	89 822	89 804	1,00	88 985	0,99
1999	89 044	89 023	1,00	88 263	0,99
2000	91 355	91 340	1,00	90 526	0,99
2001	92 274	92 254	1,00	91 361	0,99
2002	96 827	96 795	1,00	95 894	0,99
2003	100 327	100 297	1,00	99 303	0,99
2004	102 184	102 144	1,00	101 073	0,99
2005	102 547	102 508	1,00	101 427	0,99
2006	107 038	107 020	1,00	105 837	0,99
2007	108 514	108 495	1,00	107 182	0,99
2008	110 471	110 442	1,00	108 949	0,99
2009	112 955	112 926	1,00	111 245	0,98
2010	116 798	116 768	1,00	114 892	0,98
2011	112 911	112 865	1,00	110 905	0,98
2012	114 270	114 222	1,00	112 043	0,98
2013	114 687	114 616	1,00	112 050	0,98
2014	115 921	115 780	1,00	113 396	0,98
2015	116 150	115 953	1,00	113 045	0,97
2016	118 443	118 024	1,00	111 976	0,95
Total	8 963 483	8 769 265	0,98	8 571 087	0,96



**Table 3**  
**Number of foreign-born index persons, by birth year and information on mother and father**

Birth year	Number of index persons	Information on mother		Information on father	
		Number	Share	Number	Share
1932	15 895	513	0,03	368	0,02
1933	15 804	799	0,05	604	0,04
1934	17 362	980	0,06	713	0,04
1935	18 071	1 138	0,06	849	0,05
1936	18 702	1 251	0,07	924	0,05
1937	20 054	1 402	0,07	1 032	0,05
1938	20 932	1 503	0,07	1 074	0,05
1939	22 176	1 698	0,08	1 209	0,05
1940	22 283	1 854	0,08	1 287	0,06
1941	23 983	2 231	0,09	1 559	0,07
1942	22 704	2 117	0,09	1 541	0,07
1943	24 277	2 355	0,10	1 711	0,07
1944	25 359	2 434	0,10	1 785	0,07
1945	27 000	2 567	0,10	1 895	0,07
1946	30 894	3 192	0,10	2 441	0,08
1947	32 622	3 460	0,11	2 790	0,09
1948	33 143	3 548	0,11	2 826	0,09
1949	32 894	3 719	0,11	3 035	0,09
1950	32 741	3 795	0,12	3 125	0,10
1951	31 758	3 940	0,12	3 225	0,10
1952	32 204	4 211	0,13	3 463	0,11
1953	32 180	4 580	0,14	3 751	0,12
1954	33 590	5 095	0,15	4 266	0,13
1955	34 006	5 308	0,16	4 430	0,13
1956	34 786	5 468	0,16	4 613	0,13
1957	35 139	5 753	0,16	4 875	0,14
1958	34 638	5 589	0,16	4 670	0,13
1959	35 652	6 462	0,18	5 430	0,15
1960	38 230	6 587	0,17	5 568	0,15
1961	36 960	6 894	0,19	5 804	0,16
1962	38 951	7 287	0,19	6 090	0,16
1963	39 807	7 895	0,20	6 514	0,16
1964	41 188	8 225	0,20	6 832	0,17
1965	41 716	8 070	0,19	6 719	0,16
1966	41 519	8 058	0,19	6 581	0,16
1967	42 178	8 267	0,20	6 699	0,16
1968	43 423	8 605	0,20	7 032	0,16
1969	42 642	7 864	0,18	6 388	0,15
1970	42 811	7 061	0,16	5 579	0,13
1971	41 597	6 830	0,16	5 263	0,13
1972	43 010	7 493	0,17	5 893	0,14
1973	42 781	8 069	0,19	6 410	0,15
1974	45 004	8 450	0,19	6 818	0,15
1975	45 463	8 467	0,19	6 833	0,15
1976	45 624	8 303	0,18	6 627	0,15
1977	46 218	8 354	0,18	6 741	0,15
1978	47 686	8 475	0,18	6 902	0,14
1979	48 357	8 980	0,19	7 316	0,15
1980	51 457	9 572	0,19	7 837	0,15
1981	49 324	9 791	0,20	8 077	0,16

Table 3 (cont.)

Birth year	Number of index persons	Information on mother		Information on father	
		Number	Share	Number	Share
1982	51 683	10 603	0,21	8 777	0,17
1983	51 346	11 016	0,21	9 169	0,18
1984	51 411	11 598	0,23	9 710	0,19
1985	49 869	11 853	0,24	9 877	0,20
1986	47 991	11 996	0,25	10 042	0,21
1987	44 950	11 821	0,26	9 885	0,22
1988	42 477	12 310	0,29	10 252	0,24
1989	38 958	12 090	0,31	9 967	0,26
1990	36 057	12 167	0,34	9 901	0,27
1991	32 336	12 107	0,37	9 741	0,30
1992	28 871	11 529	0,40	9 171	0,32
1993	25 974	11 142	0,43	8 467	0,33
1994	24 523	11 815	0,48	9 055	0,37
1995	23 222	12 794	0,55	9 549	0,41
1996	22 266	13 751	0,62	10 206	0,46
1997	21 704	14 480	0,67	10 867	0,50
1998	22 033	15 344	0,70	11 616	0,53
1999	20 632	15 540	0,75	11 850	0,57
2000	19 592	15 824	0,81	12 269	0,63
2001	17 818	14 947	0,84	11 585	0,65
2002	16 895	14 557	0,86	11 487	0,68
2003	16 180	14 087	0,87	11 222	0,69
2004	16 032	14 256	0,89	11 616	0,72
2005	15 880	14 253	0,90	11 711	0,74
2006	15 226	13 868	0,91	11 586	0,76
2007	14 452	13 187	0,91	11 096	0,77
2008	13 671	12 540	0,92	10 751	0,79
2009	12 462	11 476	0,92	9 955	0,80
2010	11 473	10 673	0,93	9 389	0,82
2011	10 101	9 427	0,93	8 439	0,84
2012	9 030	8 496	0,94	7 742	0,86
2013	7 048	6 614	0,94	6 120	0,87
2014	5 741	5 396	0,94	4 939	0,86
2015	3 348	3 116	0,93	2 871	0,86
2016	961	835	0,87	797	0,83
Total	2 559 008	672 067	0,26	545 691	0,21

**Table 4A**  
**Amount of data on index persons born in Sweden, by birth year and source for own country of birth**

Birth year	Total	Source own country of birth			
		TPR	Personal record	Register of births	Population and Housing Census
1932	81 580	81 543	8	.	29
1933	77 829	77 782	6	.	41
1934	77 974	77 942	9	.	23
1935	79 064	79 030	10	.	24
1936	82 256	82 211	6	.	39
1937	83 838	83 796	6	.	36
1938	87 566	87 532	3	.	31
1939	91 281	91 220	0	.	61
1940	90 073	90 032	4	.	37
1941	94 273	94 227	3	.	43
1942	108 814	108 769	3	.	42
1943	119 477	119 419	9	.	49
1944	127 514	127 467	2	.	45
1945	128 324	128 272	9	.	43
1946	126 837	126 791	8	.	38
1947	123 418	123 383	10	.	25
1948	121 490	121 461	11	.	18
1949	116 447	116 415	7	.	25
1950	110 988	110 964	2	.	22
1951	106 126	106 100	3	.	23
1952	106 419	106 390	3	.	26
1953	106 594	106 578	1	.	15
1954	101 992	101 971	1	.	20
1955	104 397	104 380	1	.	16
1956	105 217	105 190	3	.	24
1957	104 357	104 328	3	.	26
1958	103 249	103 226	0	.	23
1959	102 797	102 759	1	.	37
1960	100 425	100 303	94	.	28
1961	104 686	101 690	1 822	1 173	1
1962	107 108	104 347	1 743	1 018	0
1963	112 865	110 000	1 736	1 129	0
1964	122 558	119 669	1 755	1 134	0
1965	122 906	120 200	1 572	1 134	0
1966	122 987	120 612	1 426	948	1
1967	121 396	119 438	1 217	741	0
1968	113 206	112 635	0	571	0
1969	107 708	107 415	0	293	0
1970	110 260	110 010	0	250	0
1971	114 628	114 041	0	587	0
1972	112 513	111 945	0	568	0
1973	109 861	109 804	0	57	0
1974	110 110	110 088	0	22	0
1975	103 824	103 793	0	31	0
1976	98 521	98 498	0	23	0
1977	96 245	96 229	0	16	0
1978	93 459	93 449	0	10	0
1979	96 467	96 460	0	7	0
1980	97 318	97 311	0	7	0
1981	94 279	94 272	0	7	0

Table 4A (cont.)

Birth year	Total	Source own country of birth			
		TPR	Personal record	Register of births	Population and Housing Census
1982	93 166	93 160	0	6	0
1983	91 960	91 951	0	9	0
1984	94 119	94 116	0	3	0
1985	98 654	98 651	0	3	0
1986	102 120	102 116	0	4	0
1987	104 934	104 928	0	6	0
1988	112 527	112 521	0	6	0
1989	116 558	116 549	0	9	0
1990	124 842	124 833	0	9	0
1991	124 233	124 220	0	13	0
1992	123 443	123 437	0	6	0
1993	118 343	118 333	0	10	0
1994	112 519	112 514	0	5	0
1995	103 675	103 669	0	6	0
1996	95 541	95 537	0	4	0
1997	90 790	90 782	0	8	0
1998	89 822	89 822	0	0	0
1999	89 044	89 044	0	0	0
2000	91 355	91 355	0	0	0
2001	92 274	92 274	0	0	0
2002	96 827	96 827	0	0	0
2003	100 327	100 327	0	0	0
2004	102 184	102 184	0	0	0
2005	102 547	102 547	0	0	0
2006	107 038	107 038	0	0	0
2007	108 514	108 514	0	0	0
2008	110 471	110 471	0	0	0
2009	112 955	112 955	0	0	0
2010	116 798	116 798	0	0	0
2011	112 911	112 911	0	0	0
2012	114 270	114 270	0	0	0
2013	114 687	114 687	0	0	0
2014	115 921	115 921	0	0	0
2015	116 150	116 150	0	0	0
2016	118 443	118 443	0	0	0
Total	8 963 483	8 941 242	11 497	9 833	911

**Table 4B**  
**Amount of data on index persons born in Sweden, by birth year and source for parents' country of birth**

Birth year	Total	Source mother's country of birth				No data	Source father's country of birth				No data
		TPR	Personal records	Register of births	PHC		TPR	Personal records	Register of births*	PHC	
1932	81 580	28 589	49	0	70	52 872	23 230	100	.	101	58 149
1933	77 829	50 019	125	0	133	27 552	42 330	188	.	202	35 109
1934	77 974	60 000	116	0	128	17 730	51 356	198	.	248	26 172
1935	79 064	64 808	137	0	146	13 973	56 239	183	.	245	22 397
1936	82 256	69 445	134	0	113	12 564	60 991	213	.	254	20 798
1937	83 838	71 884	151	0	130	11 673	63 665	193	.	221	19 759
1938	87 566	76 484	125	0	118	10 839	68 047	199	.	236	19 084
1939	91 281	80 654	139	0	106	10 382	72 282	233	.	217	18 549
1940	90 073	80 646	118	0	105	9 204	72 845	191	.	209	16 828
1941	94 273	85 594	149	0	115	8 415	78 455	187	.	220	15 411
1942	108 814	100 375	139	0	90	8 210	92 358	222	.	230	16 004
1943	119 477	110 950	139	0	98	8 290	103 104	194	.	256	15 923
1944	127 514	119 678	139	0	100	7 597	111 406	216	.	224	15 668
1945	128 324	121 424	114	0	87	6 699	112 860	233	.	202	15 029
1946	126 837	121 240	115	0	82	5 400	113 608	169	.	211	12 849
1947	123 418	118 662	93	0	79	4 584	111 950	157	.	166	11 145
1948	121 490	117 587	69	0	56	3 778	111 452	132	.	170	9 736
1949	116 447	113 223	85	0	55	3 084	107 689	115	.	167	8 476
1950	110 988	108 305	85	0	53	2 545	103 598	103	.	119	7 168
1951	106 126	103 762	87	0	30	2 247	99 532	97	.	111	6 386
1952	106 419	104 423	73	0	37	1 886	100 696	99	.	113	5 511
1953	106 594	104 765	87	0	33	1 709	101 426	73	.	105	4 990
1954	101 992	100 554	72	0	35	1 331	97 534	94	.	76	4 288
1955	104 397	103 084	86	0	31	1 196	100 222	67	.	91	4 017
1956	105 217	104 150	65	0	34	968	101 422	52	.	91	3 652
1957	104 357	103 341	74	0	25	917	100 870	54	.	95	3 338
1958	103 249	102 419	47	0	36	747	99 960	36	.	98	3 155
1959	102 797	102 067	43	0	33	654	99 799	31	.	94	2 873
1960	100 425	99 783	41	0	22	579	97 599	35	.	71	2 720
1961	104 686	104 251	74	0	90	271	102 260	54	.	146	2 226
1962	107 108	106 513	64	0	77	454	104 499	64	.	133	2 412
1963	112 865	112 130	83	0	72	580	110 024	54	.	122	2 665
1964	122 558	121 720	79	0	68	691	119 483	68	.	117	2 890
1965	122 906	122 021	65	0	78	742	119 957	68	.	112	2 769
1966	122 987	122 170	64	0	68	685	120 219	53	.	107	2 608
1967	121 396	120 757	62	0	83	494	119 004	46	.	131	2 215
1968	113 206	112 802	7	0	89	308	111 303	8	.	81	1 814
1969	107 708	107 321	2	1	85	299	105 958	0	.	69	1 681
1970	110 260	109 957	2	0	114	187	108 612	1	.	82	1 565
1971	114 628	114 386	1	0	98	143	113 071	0	.	72	1 485
1972	112 513	112 328	0	0	79	106	111 047	0	.	62	1 404
1973	109 861	109 705	0	3	72	81	108 516	0	.	45	1 300
1974	110 110	109 962	0	10	60	78	108 906	0	.	53	1 151
1975	103 824	103 685	1	8	43	87	102 673	0	.	36	1 115
1976	98 521	98 344	0	13	39	125	97 412	0	.	37	1 072
1977	96 245	96 070	1	21	40	113	95 207	0	.	38	1 000
1978	93 459	93 274	0	60	4	121	92 456	0	.	28	975
1979	96 467	96 317	0	45	4	101	95 444	0	.	30	993
1980	97 318	97 177	0	38	4	99	96 363	0	.	12	943
1981	94 279	94 135	0	39	2	103	93 385	0	.	16	878

Table 4B (cont.)

Birth year	Total	Source mother's country of birth				No data	Source father's country of birth				No data
		TPR	Personal records	Register of births	PHC		TPR	Personal records	Register of births*	PHC	
1982	93 166	93 050	0	33	0	83	92 290	0	.	7	869
1983	91 960	91 831	0	36	2	91	91 122	0	.	14	824
1984	94 119	93 977	0	29	1	112	93 275	0	.	10	834
1985	98 654	98 487	0	34	1	132	97 720	0	.	8	926
1986	102 120	101 931	0	35	0	154	101 081	0	.	7	1 032
1987	104 934	104 757	0	39	0	138	103 904	0	.	12	1 018
1988	112 527	112 341	0	41	1	144	111 433	0	.	10	1 082
1989	116 558	116 336	0	42	0	180	115 326	0	.	8	1 224
1990	124 842	124 436	0	61	2	343	123 313	0	.	7	1 522
1991	124 233	123 814	0	18	0	401	122 728	0	.	7	1 498
1992	123 443	122 348	0	8	0	1 087	121 294	0	.	5	2 143
1993	118 343	117 424	0	13	0	906	116 336	0	.	2	2 005
1994	112 519	112 330	0	9	0	180	111 339	0	.	0	1 180
1995	103 675	103 507	0	11	0	157	102 602	0	.	2	1 069
1996	95 541	95 446	0	4	0	91	94 612	0	.	0	929
1997	90 790	90 716	0	7	0	67	89 854	0	.	2	933
1998	89 822	89 804	0	0	0	18	88 969	2	.	0	851
1999	89 044	89 022	0	0	0	22	88 252	0	.	0	792
2000	91 355	91 339	0	0	0	16	90 515	0	.	0	840
2001	92 274	92 251	0	0	0	23	91 349	0	.	0	925
2002	96 827	96 791	0	0	0	36	95 887	0	.	0	939
2003	100 327	100 293	0	0	0	34	99 300	0	.	0	1 027
2004	102 184	102 141	0	0	0	43	101 069	0	.	0	1 115
2005	102 547	102 502	0	0	0	45	101 420	1	.	0	1 126
2006	107 038	107 014	0	0	0	24	105 824	0	.	0	1 213
2007	108 514	108 489	0	0	0	25	107 176	0	.	0	1 338
2008	110 471	110 434	0	0	0	37	108 939	0	.	0	1 532
2009	112 955	112 917	0	0	0	38	111 230	0	.	0	1 725
2010	116 798	116 758	0	0	0	40	114 880	0	.	0	1 918
2011	112 911	112 857	0	0	0	54	110 893	0	.	0	2 018
2012	114 270	114 208	0	0	0	62	112 030	0	.	0	2 240
2013	114 687	114 602	0	0	0	85	112 035	0	.	0	2 652
2014	115 921	115 759	0	0	0	162	113 380	0	.	0	2 541
2015	116 150	115 932	0	0	0	218	113 028	0	.	0	3 122
2016	118 443	118 009	0	0	0	434	111 957	0	.	0	6 486
Total	8 963 483	8 706 793	3 401	658	3 456	249 175	8 458 686	4 483	.	6 473	493 833

\*) There is no information about the father's country of birth in the Register of births.

**Table 4C**  
**Amount of data on index persons born in Sweden, by birth number and source for mother's registration number and birth date**

Birth year	Total	Source mother's registration no.			No data	Source mother's birth date			No data
		TPR	Personal records	Register of births		TPR	Personal records	Register of births	
1932	81 580	30 221	173	.	51 186	33 646	207	.	47 727
1933	77 829	53 185	344	.	24 300	57 298	371	.	20 160
1934	77 974	63 358	352	.	14 264	67 703	386	.	9 885
1935	79 064	68 029	361	.	10 674	72 292	378	.	6 394
1936	82 256	72 672	342	.	9 242	76 548	361	.	5 347
1937	83 838	74 916	313	.	8 609	78 600	329	.	4 909
1938	87 566	79 262	308	.	7 996	82 706	325	.	4 535
1939	91 281	83 260	351	.	7 670	86 635	369	.	4 277
1940	90 073	83 104	317	.	6 652	85 972	336	.	3 765
1941	94 273	88 014	328	.	5 931	90 394	342	.	3 537
1942	108 814	102 805	360	.	5 649	104 984	373	.	3 457
1943	119 477	113 536	350	.	5 591	115 487	357	.	3 633
1944	127 514	122 035	357	.	5 122	123 801	372	.	3 341
1945	128 324	123 523	359	.	4 442	125 029	367	.	2 928
1946	126 837	123 222	279	.	3 336	124 256	287	.	2 294
1947	123 418	120 451	262	.	2 705	121 257	271	.	1 890
1948	121 490	119 108	208	.	2 174	119 700	211	.	1 579
1949	116 447	114 458	180	.	1 809	114 896	181	.	1 370
1950	110 988	109 314	134	.	1 540	109 674	134	.	1 180
1951	106 126	104 666	92	.	1 368	104 959	89	.	1 078
1952	106 419	105 111	119	.	1 189	105 378	118	.	923
1953	106 594	105 357	120	.	1 117	105 631	115	.	848
1954	101 992	101 017	72	.	903	101 207	72	.	713
1955	104 397	103 422	128	.	847	103 589	124	.	684
1956	105 217	104 382	120	.	715	104 528	118	.	571
1957	104 357	103 538	133	.	686	103 679	132	.	546
1958	103 249	102 527	121	.	601	102 639	123	.	487
1959	102 797	102 083	138	.	576	102 184	136	.	477
1960	100 425	99 730	174	.	521	99 813	172	.	440
1961	104 686	103 228	850	585	23	103 346	851	470	19
1962	107 108	105 803	778	508	19	105 903	780	410	15
1963	112 865	111 526	811	505	23	111 644	812	389	20
1964	122 558	121 234	825	478	21	121 354	825	365	14
1965	122 906	121 798	651	433	24	121 901	650	336	19
1966	122 987	121 961	597	403	26	122 034	601	332	20
1967	121 396	120 447	542	376	31	120 514	546	313	23
1968	113 206	112 382	0	740	84	112 445	0	740	21
1969	107 708	107 037	0	580	91	107 102	0	588	18
1970	110 260	109 606	0	576	78	109 675	0	575	10
1971	114 628	113 988	0	553	87	114 054	0	552	22
1972	112 513	111 971	0	461	81	112 022	0	467	24
1973	109 861	109 367	0	420	74	109 425	0	420	16
1974	110 110	109 638	0	405	67	109 688	0	409	13
1975	103 824	103 407	0	350	67	103 461	0	348	15
1976	98 521	98 094	0	321	106	98 172	0	328	21
1977	96 245	95 840	0	304	101	95 908	0	314	23
1978	93 459	93 073	0	274	112	93 160	0	280	19
1979	96 467	96 129	0	258	80	96 189	0	264	14
1980	97 318	97 035	0	195	88	97 101	0	198	19
1981	94 279	94 027	0	156	96	94 107	0	161	11

Table 4C (cont.)

Birth year	Total	Source mother's registration no.			No data	Source mother's birth date			No data
		TPR	Personal records	Register of births		TPR	Personal records	Register of births	
1982	93 166	92 932	0	156	78	92 990	0	161	15
1983	91 960	91 719	0	161	80	91 785	0	165	10
1984	94 119	93 874	0	138	107	93 958	0	144	17
1985	98 654	98 393	0	138	123	98 489	0	143	22
1986	102 120	101 831	0	137	152	101 956	0	152	12
1987	104 934	104 667	0	131	136	104 785	0	139	10
1988	112 527	112 244	0	149	134	112 354	0	160	13
1989	116 558	116 226	0	157	175	116 366	0	173	19
1990	124 842	124 308	0	199	335	124 584	0	239	19
1991	124 233	123 780	0	61	392	124 139	0	88	6
1992	123 443	122 351	0	13	1 079	123 380	0	53	10
1993	118 343	117 430	0	13	900	118 270	0	67	6
1994	112 519	112 337	0	9	173	112 499	0	11	9
1995	103 675	103 514	0	9	152	103 656	0	14	5
1996	95 541	95 450	0	7	84	95 531	0	9	1
1997	90 790	90 721	0	7	62	90 780	0	8	2
1998	89 822	89 804	0	0	18	89 807	0	0	15
1999	89 044	89 023	0	0	21	89 032	0	0	12
2000	91 355	91 340	0	0	15	91 345	0	0	10
2001	92 274	92 254	0	0	20	92 264	0	0	10
2002	96 827	96 795	0	0	32	96 807	0	0	20
2003	100 327	100 297	0	0	30	100 305	0	0	22
2004	102 184	102 144	0	0	40	102 155	0	0	29
2005	102 547	102 508	0	0	39	102 519	0	0	28
2006	107 038	107 020	0	0	18	107 034	0	0	4
2007	108 514	108 495	0	0	19	108 507	0	0	7
2008	110 471	110 442	0	0	29	110 466	0	0	5
2009	112 955	112 926	0	0	29	112 945	0	0	10
2010	116 798	116 768	0	0	30	116 798	0	0	0
2011	112 911	112 865	0	0	46	112 908	0	0	3
2012	114 270	114 222	0	0	48	114 267	0	0	3
2013	114 687	114 616	0	0	71	114 682	0	0	5
2014	115 921	115 780	0	0	141	115 917	0	0	4
2015	116 150	115 953	0	0	197	116 146	0	0	4
2016	118 443	118 024	0	0	419	118 437	0	0	6
Total	8 963 483	8 746 950	11 949	10 366	194 218	8 801 553	12 221	9 985	139 724



**Table 4D**  
**Amount of data on index persons born in Sweden, by birth number and source for father's registration number and birth date**

Birth year	Total	Source father's registration no.			No data	Source father's birth date			No data
		TPR	Personal records	Register of births		TPR	Personal records	Register of births	
1932	81 580	26 265	172	.	55 143	31 202	219	.	50 159
1933	77 829	47 942	346	.	29 541	54 408	396	.	23 025
1934	77 974	57 620	370	.	19 984	64 741	417	.	12 816
1935	79 064	62 177	380	.	16 507	69 304	415	.	9 345
1936	82 256	66 921	370	.	14 965	73 662	408	.	8 186
1937	83 838	69 315	343	.	14 180	75 853	373	.	7 612
1938	87 566	73 462	330	.	13 774	79 840	359	.	7 367
1939	91 281	77 470	370	.	13 441	83 909	412	.	6 960
1940	90 073	77 549	363	.	12 161	83 274	399	.	6 400
1941	94 273	83 039	363	.	10 871	87 917	396	.	5 960
1942	108 814	97 328	397	.	11 089	102 418	428	.	5 968
1943	119 477	107 988	428	.	11 061	112 844	453	.	6 180
1944	127 514	116 111	451	.	10 952	120 960	483	.	6 071
1945	128 324	117 469	450	.	10 405	122 090	488	.	5 746
1946	126 837	117 832	361	.	8 644	121 612	384	.	4 841
1947	123 418	115 664	356	.	7 398	118 920	381	.	4 117
1948	121 490	114 756	261	.	6 473	117 509	274	.	3 707
1949	116 447	110 458	226	.	5 763	112 845	236	.	3 366
1950	110 988	105 858	164	.	4 966	107 827	171	.	2 990
1951	106 126	101 410	140	.	4 576	103 183	145	.	2 798
1952	106 419	102 316	159	.	3 944	103 737	167	.	2 515
1953	106 594	102 833	130	.	3 631	104 158	141	.	2 295
1954	101 992	98 671	109	.	3 212	99 875	111	.	2 006
1955	104 397	101 111	155	.	3 131	102 248	159	.	1 990
1956	105 217	102 164	139	.	2 914	103 232	141	.	1 844
1957	104 357	101 436	179	.	2 742	102 483	185	.	1 689
1958	103 249	100 352	177	.	2 720	101 345	176	.	1 728
1959	102 797	100 007	207	.	2 583	100 953	212	.	1 632
1960	100 425	97 608	245	.	2 572	98 548	254	.	1 623
1961	104 686	100 874	1 006	881	1 925	101 871	1 040	602	1 173
1962	107 108	103 361	976	802	1 969	104 327	1 004	581	1 196
1963	112 865	109 010	965	843	2 047	110 010	984	578	1 293
1964	122 558	118 609	979	832	2 138	119 695	1 008	555	1 300
1965	122 906	119 293	808	789	2 016	120 300	829	499	1 278
1966	122 987	119 601	761	752	1 873	120 530	776	465	1 216
1967	121 396	118 290	696	699	1 711	119 158	711	453	1 074
1968	113 206	110 925	0	711	1 570	111 527	0	721	958
1969	107 708	105 687	0	543	1 478	106 222	0	546	940
1970	110 260	108 349	0	474	1 437	108 872	0	484	904
1971	114 628	112 758	0	447	1 423	113 268	0	450	910
1972	112 513	110 779	0	371	1 363	111 243	0	379	891
1973	109 861	108 254	0	337	1 270	108 686	0	354	821
1974	110 110	108 649	0	335	1 126	109 054	0	345	711
1975	103 824	102 462	0	277	1 085	102 836	0	288	700
1976	98 521	97 238	0	243	1 040	97 639	0	257	625
1977	96 245	95 053	0	220	972	95 421	0	231	593
1978	93 459	92 317	0	194	948	92 655	0	202	602
1979	96 467	95 337	0	178	952	95 683	0	188	596
1980	97 318	96 276	0	128	914	96 651	0	135	532
1981	94 279	93 322	0	115	842	93 680	0	124	475

Table 4D (cont.)

Birth year	Total	Source father's registration no.			No data	Source father's birth date			No data
		TPR	Personal records	Register of births		TPR	Personal records	Register of births	
1982	93 166	92 218	0	98	850	92 559	0	106	501
1983	91 960	91 032	0	123	805	91 399	0	129	432
1984	94 119	93 213	0	94	812	93 619	0	103	397
1985	98 654	97 645	0	98	911	98 101	0	105	448
1986	102 120	101 028	0	82	1 010	101 503	0	96	521
1987	104 934	103 845	0	85	1 004	104 348	0	98	488
1988	112 527	111 367	0	97	1 063	111 886	0	110	531
1989	116 558	115 273	0	80	1 205	115 896	0	92	570
1990	124 842	123 228	0	111	1 503	124 054	0	142	646
1991	124 233	122 723	0	43	1 467	123 614	0	72	547
1992	123 443	121 295	0	19	2 129	122 827	0	50	566
1993	118 343	116 355	0	9	1 979	117 785	0	48	510
1994	112 519	111 352	0	8	1 159	112 084	0	15	420
1995	103 675	102 621	0	12	1 042	103 303	0	17	355
1996	95 541	94 625	0	10	906	95 213	0	16	312
1997	90 790	89 860	0	7	923	90 433	0	11	346
1998	89 822	88 985	0	0	837	89 508	0	0	314
1999	89 044	88 263	0	0	781	88 775	0	0	269
2000	91 355	90 526	0	0	829	91 073	0	0	282
2001	92 274	91 361	0	0	913	91 976	0	0	298
2002	96 827	95 894	0	0	933	96 488	0	0	339
2003	100 327	99 303	0	0	1 024	99 948	0	0	379
2004	102 184	101 073	0	0	1 111	101 780	0	0	404
2005	102 547	101 427	0	0	1 120	102 140	0	0	407
2006	107 038	105 837	0	0	1 201	106 529	0	0	509
2007	108 514	107 182	0	0	1 332	107 923	0	0	591
2008	110 471	108 949	0	0	1 522	109 808	0	0	663
2009	112 955	111 245	0	0	1 710	112 191	0	0	764
2010	116 798	114 892	0	0	1 906	115 948	0	0	850
2011	112 911	110 905	0	0	2 006	112 017	0	0	894
2012	114 270	112 043	0	0	2 227	113 321	0	0	949
2013	114 687	112 050	0	0	2 637	113 574	0	0	1 113
2014	115 921	113 396	0	0	2 525	114 761	0	0	1 160
2015	116 150	113 045	0	0	3 105	114 835	0	0	1 315
2016	118 443	111 976	0	0	6 467	114 114	0	0	4 329
Total	8 963 483	8 545 608	14 332	11 147	392 396	8 695 558	15 135	9 647	243 143

**Table 5A**  
**Amount of data on foreign-born index persons, by birth year and source for own country of birth**

Birth year	Total	Source for own country of birth			
		TPR	Personal record	Register of births	Population and Housing Census
1932	15 895	15 813	24	.	58
1933	15 804	15 710	31	.	63
1934	17 362	17 280	18	.	64
1935	18 071	17 979	29	.	63
1936	18 702	18 622	23	.	57
1937	20 054	19 940	32	.	82
1938	20 932	20 808	41	.	83
1939	22 176	22 059	33	.	84
1940	22 283	22 182	26	.	75
1941	23 983	23 897	35	.	51
1942	22 704	22 632	26	.	46
1943	24 277	24 213	26	.	38
1944	25 359	25 302	19	.	38
1945	27 000	26 958	13	.	29
1946	30 894	30 839	16	.	39
1947	32 622	32 573	9	.	40
1948	33 143	33 106	4	.	33
1949	32 894	32 850	2	.	41
1950	32 741	32 708	3	.	30
1951	31 758	31 740	3	.	14
1952	32 204	32 170	5	.	28
1953	32 180	32 148	6	.	24
1954	33 590	33 565	1	.	23
1955	34 006	33 987	4	.	15
1956	34 786	34 769	3	.	10
1957	35 139	35 116	5	.	18
1958	34 638	34 615	4	.	18
1959	35 652	35 634	6	.	11
1960	38 230	38 218	9	.	3
1961	36 960	36 950	8	0	2
1962	38 951	38 937	11	0	3
1963	39 807	39 796	6	2	3
1964	41 188	41 174	7	2	5
1965	41 716	41 706	5	2	3
1966	41 519	41 510	2	1	6
1967	42 178	42 169	0	0	9
1968	43 423	43 416	0	3	4
1969	42 642	42 639	0	1	2
1970	42 811	42 808	0	3	0
1971	41 597	41 597	0	0	0
1972	43 010	43 008	0	2	0
1973	42 781	42 781	0	0	0
1974	45 004	45 004	0	0	0
1975	45 463	45 463	0	0	0
1976	45 624	45 624	0	0	0
1977	46 218	46 218	0	0	0
1978	47 686	47 686	0	0	0
1979	48 357	48 357	0	0	0
1980	51 457	51 456	0	1	0
1981	49 324	49 324	0	0	0

Table 5A (cont.)

Birth year	Total	Source for own country of birth			
		TPR	Personal record	Register of births	Population and Housing Census
1982	51 683	51 683	0	0	0
1983	51 346	51 346	0	0	0
1984	51 411	51 411	0	0	0
1985	49 869	49 869	0	0	0
1986	47 991	47 991	0	0	0
1987	44 950	44 950	0	0	0
1988	42 477	42 477	0	0	0
1989	38 958	38 958	0	0	0
1990	36 057	36 057	0	0	0
1991	32 336	32 336	0	0	0
1992	28 871	28 871	0	0	0
1993	25 974	25 974	0	0	0
1994	24 523	24 523	0	0	0
1995	23 222	23 222	0	0	0
1996	22 266	22 266	0	0	0
1997	21 704	21 704	0	0	0
1998	22 033	22 033	0	0	0
1999	20 632	20 632	0	0	0
2000	19 592	19 592	0	0	0
2001	17 818	17 818	0	0	0
2002	16 895	16 895	0	0	0
2003	16 180	16 180	0	0	0
2004	16 032	16 032	0	0	0
2005	15 880	15 880	0	0	0
2006	15 226	15 226	0	0	0
2007	14 452	14 452	0	0	0
2008	13 671	13 671	0	0	0
2009	12 462	12 462	0	0	0
2010	11 473	11 473	0	0	0
2011	10 101	10 101	0	0	0
2012	9 030	9 030	0	0	0
2013	7 048	7 048	0	0	0
2014	5 741	5 741	0	0	0
2015	3 348	3 348	0	0	0
2016	961	961	0	0	0
Total	2 559 008	2 557 269	495	29	1 215

**Table 5B**  
**Amount of data on foreign-born index persons, by birth year and source for parent's country of birth**

Birth year	Total	Source mother's country of birth				No data	Source father's country of birth				No data
		TPR	Personal records	Register of births	PHC		TPR	Personal records	Register of births	PHC	
1932	15 895	468	0	0	6	15 421	290	2	.	5	15 598
1933	15 804	731	2	0	8	15 063	498	6	.	6	15 294
1934	17 362	897	5	0	4	16 456	613	6	.	7	16 736
1935	18 071	1 027	5	0	17	17 022	729	8	.	10	17 324
1936	18 702	1 148	3	0	11	17 540	796	5	.	12	17 889
1937	20 054	1 280	5	0	21	18 748	907	4	.	20	19 123
1938	20 932	1 393	3	0	10	19 526	946	10	.	14	19 962
1939	22 176	1 588	6	0	20	20 562	1 058	8	.	18	21 092
1940	22 283	1 730	5	0	29	20 519	1 127	13	.	23	21 120
1941	23 983	2 075	5	0	33	21 870	1 399	8	.	29	22 547
1942	22 704	1 992	5	0	29	20 678	1 354	5	.	41	21 304
1943	24 277	2 206	2	0	34	22 035	1 539	9	.	39	22 690
1944	25 359	2 286	5	0	35	23 033	1 609	8	.	48	23 694
1945	27 000	2 416	3	0	44	24 537	1 695	4	.	52	25 249
1946	30 894	3 007	8	0	47	27 832	2 224	12	.	58	28 600
1947	32 622	3 274	12	0	41	29 295	2 584	20	.	50	29 968
1948	33 143	3 374	9	0	28	29 732	2 597	14	.	44	30 488
1949	32 894	3 523	9	0	34	29 328	2 803	16	.	47	30 028
1950	32 741	3 632	11	0	20	29 078	2 947	10	.	27	29 757
1951	31 758	3 825	4	0	17	27 912	3 083	11	.	24	28 640
1952	32 204	4 070	16	0	22	28 096	3 307	14	.	27	28 856
1953	32 180	4 459	13	0	11	27 697	3 617	15	.	20	28 528
1954	33 590	4 978	13	0	17	28 582	4 129	9	.	27	29 425
1955	34 006	5 190	17	0	12	28 787	4 283	8	.	22	29 693
1956	34 786	5 354	9	0	17	29 406	4 473	13	.	19	30 281
1957	35 139	5 652	13	0	14	29 460	4 736	13	.	22	30 368
1958	34 638	5 502	15	0	3	29 118	4 546	7	.	14	30 071
1959	35 652	6 373	8	0	5	29 266	5 292	12	.	11	30 337
1960	38 230	6 505	11	0	4	31 710	5 429	11	.	11	32 779
1961	36 960	6 805	12	0	7	30 136	5 679	13	.	5	31 263
1962	38 951	7 201	12	0	8	31 730	5 962	6	.	8	32 975
1963	39 807	7 839	5	0	6	31 957	6 430	9	.	8	33 360
1964	41 188	8 159	5	0	9	33 015	6 745	6	.	13	34 424
1965	41 716	8 016	13	0	7	33 680	6 639	8	.	3	35 066
1966	41 519	7 999	9	0	11	33 500	6 494	9	.	13	35 003
1967	42 178	8 218	11	0	13	33 936	6 633	4	.	11	35 530
1968	43 423	8 560	1	0	7	34 855	6 956	1	.	12	36 454
1969	42 642	7 833	0	1	17	34 791	6 344	0	.	8	36 290
1970	42 811	7 043	1	0	7	35 760	5 531	0	.	6	37 274
1971	41 597	6 819	0	0	4	34 774	5 225	0	.	2	36 370
1972	43 010	7 480	0	0	5	35 525	5 863	1	.	7	37 139
1973	42 781	8 052	0	0	9	34 720	6 371	0	.	7	36 403
1974	45 004	8 439	0	0	3	36 562	6 794	0	.	1	38 209
1975	45 463	8 460	0	0	2	37 001	6 818	0	.	1	38 644
1976	45 624	8 299	0	1	0	37 324	6 608	0	.	0	39 016
1977	46 218	8 350	0	0	0	37 868	6 723	0	.	1	39 494
1978	47 686	8 470	0	1	0	39 215	6 888	0	.	0	40 798
1979	48 357	8 971	0	0	1	39 385	7 298	0	.	2	41 057
1980	51 457	9 565	0	0	1	41 891	7 823	0	.	0	43 634
1981	49 324	9 787	0	0	0	39 537	8 065	0	.	2	41 257

Table 5B (cont.)

Birth year	Total	Source mother's country of birth				No data	Source father's country of birth				No data
		TPR	Personal records	Register of births	PHC		TPR	Personal records	Register of births	PHC	
1982	51 683	10 594	0	0	1	41 088	8 770	0	.	0	42 913
1983	51 346	11 013	0	0	0	40 333	9 151	0	.	2	42 193
1984	51 411	11 595	0	0	0	39 816	9 698	0	.	0	41 713
1985	49 869	11 850	0	0	0	38 019	9 862	0	.	0	40 007
1986	47 991	11 991	0	1	0	35 999	10 034	0	.	2	37 954
1987	44 950	11 813	0	1	0	33 136	9 878	0	.	0	35 072
1988	42 477	12 308	0	0	0	30 169	10 246	0	.	0	32 231
1989	38 958	12 082	0	1	0	26 875	9 952	0	.	0	29 005
1990	36 057	12 165	0	0	0	23 892	9 892	0	.	0	26 165
1991	32 336	12 098	0	1	0	20 237	9 734	1	.	0	22 601
1992	28 871	11 524	0	1	0	17 346	9 160	0	.	0	19 710
1993	25 974	11 136	0	1	0	14 837	8 462	1	.	0	17 511
1994	24 523	11 802	0	1	0	12 720	9 045	0	.	0	15 478
1995	23 222	12 783	0	1	0	10 438	9 542	1	.	0	13 679
1996	22 266	13 738	0	1	0	8 527	10 201	1	.	0	12 064
1997	21 704	14 471	0	0	0	7 233	10 858	0	.	0	10 845
1998	22 033	15 332	0	2	0	6 699	11 606	1	.	0	10 424
1999	20 632	15 529	0	1	0	5 102	11 837	0	.	0	8 795
2000	19 592	15 811	0	1	0	3 780	12 265	0	.	0	7 327
2001	17 818	14 943	0	0	0	2 875	11 578	0	.	0	6 240
2002	16 895	14 549	0	0	0	2 346	11 478	0	.	0	5 417
2003	16 180	14 079	0	0	0	2 101	11 219	0	.	0	4 961
2004	16 032	14 250	0	0	0	1 782	11 611	0	.	0	4 421
2005	15 880	14 244	0	0	0	1 636	11 695	0	.	0	4 185
2006	15 226	13 861	0	0	0	1 365	11 577	0	.	0	3 649
2007	14 452	13 179	0	0	0	1 273	11 085	1	.	0	3 366
2008	13 671	12 536	0	0	0	1 135	10 741	0	.	0	2 930
2009	12 462	11 470	0	0	0	992	9 942	0	.	0	2 520
2010	11 473	10 664	0	0	0	809	9 381	0	.	0	2 092
2011	10 101	9 426	0	0	0	675	8 432	0	.	0	1 669
2012	9 030	8 493	0	0	0	537	7 734	0	.	0	1 296
2013	7 048	6 611	0	0	0	437	6 117	0	.	0	931
2014	5 741	5 390	0	0	0	351	4 934	0	.	0	807
2015	3 348	3 114	0	0	0	234	2 867	0	.	0	481
2016	961	831	0	0	0	130	797	0	.	0	164
Total	2 559 008	667 595	291	16	711	1 890 395	539 880	344	.	861	2 017 917

\*) There is no information about the father's country of birth in the Register of births.

**Table 5C**  
**Amount of data on foreign-born index persons, by birth year and source for mother's registration number and birth date**

Birth year	Total	Source mother's registration number			No data	Source mother's birth date			No data
		TPR	Personal records	Register of births		TPR	Personal records	Register of births	
1932	15 895	504	9	.	15 382	607	12	.	15 276
1933	15 804	789	10	.	15 005	937	12	.	14 855
1934	17 362	961	19	.	16 382	1 157	20	.	16 185
1935	18 071	1 110	28	.	16 933	1 366	29	.	16 676
1936	18 702	1 235	16	.	17 451	1 512	18	.	17 172
1937	20 054	1 378	24	.	18 652	1 691	25	.	18 338
1938	20 932	1 480	23	.	19 429	1 732	26	.	19 174
1939	22 176	1 670	28	.	20 478	2 030	33	.	20 113
1940	22 283	1 831	23	.	20 429	2 115	26	.	20 142
1941	23 983	2 195	36	.	21 752	2 474	38	.	21 471
1942	22 704	2 096	21	.	20 587	2 290	25	.	20 389
1943	24 277	2 316	39	.	21 922	2 481	39	.	21 757
1944	25 359	2 394	40	.	22 925	2 566	46	.	22 747
1945	27 000	2 530	37	.	24 433	2 693	44	.	24 263
1946	30 894	3 108	84	.	27 702	3 316	93	.	27 485
1947	32 622	3 310	150	.	29 162	3 525	193	.	28 904
1948	33 143	3 400	148	.	29 595	3 626	166	.	29 351
1949	32 894	3 569	150	.	29 175	3 823	157	.	28 914
1950	32 741	3 657	138	.	28 946	4 034	142	.	28 565
1951	31 758	3 824	116	.	27 818	4 283	118	.	27 357
1952	32 204	4 074	137	.	27 993	4 539	137	.	27 528
1953	32 180	4 438	142	.	27 600	4 923	143	.	27 114
1954	33 590	4 949	146	.	28 495	5 475	147	.	27 968
1955	34 006	5 163	145	.	28 698	5 728	145	.	28 133
1956	34 786	5 301	167	.	29 318	5 842	168	.	28 776
1957	35 139	5 590	163	.	29 386	6 105	163	.	28 871
1958	33 128	5 390	113	.	27 625	5 877	114	.	27 137
1959	34 151	6 255	132	.	27 764	6 722	132	.	27 297
1960	36 374	6 351	160	.	29 863	6 825	160	.	29 389
1961	35 199	6 682	83	51	28 383	7 173	82	51	27 893
1962	36 849	6 997	107	104	29 641	7 427	106	104	29 212
1963	37 457	7 624	89	103	29 641	7 998	90	101	29 268
1964	38 597	7 947	106	97	30 447	8 325	106	96	30 070
1965	38 882	7 774	83	124	30 901	8 144	83	124	30 531
1966	38 439	7 773	84	124	30 458	8 117	85	124	30 113
1967	38 794	7 956	94	113	30 631	8 291	94	113	30 296
1968	39 621	8 365	0	148	31 108	8 728	0	151	30 742
1969	38 562	7 670	0	111	30 781	8 007	0	114	30 441
1970	38 208	6 885	0	81	31 242	7 219	0	83	30 906
1971	36 789	6 668	0	75	30 046	7 028	0	75	29 686
1972	37 711	7 365	0	56	30 290	7 708	0	57	29 946
1973	37 296	7 922	0	54	29 320	8 278	0	54	28 964
1974	38 641	8 338	0	5	30 298	8 717	0	5	29 919
1975	38 939	8 376	0	1	30 562	8 728	0	1	30 210
1976	38 716	8 189	0	1	30 526	8 545	0	1	30 170
1977	38 635	8 246	0	1	30 388	8 597	0	1	30 037
1978	39 437	8 388	0	0	31 049	8 768	0	0	30 669
1979	39 457	8 884	0	0	30 573	9 199	0	0	30 258
1980	41 223	9 446	0	1	31 776	9 816	0	3	31 404
1981	39 258	9 683	0	0	29 575	10 036	0	0	29 222

Table 5C (cont.)

Birth year	Total	Source mother's registration number			No data	Source mother's birth date			No data
		TPR	Personal records	Register of births		TPR	Personal records	Register of births	
1982	51 683	10 602	0	1	41 080	11 013	0	1	40 669
1983	51 346	11 016	0	0	40 330	11 396	0	0	39 950
1984	51 411	11 598	0	0	39 813	12 055	0	0	39 356
1985	49 869	11 853	0	0	38 016	12 297	0	0	37 572
1986	47 991	11 994	0	2	35 995	12 410	0	2	35 579
1987	44 950	11 820	0	1	33 129	12 252	0	1	32 697
1988	42 477	12 310	0	0	30 167	12 723	0	0	29 754
1989	38 958	12 089	0	1	26 868	12 554	0	1	26 403
1990	36 057	12 166	0	1	23 890	12 665	0	1	23 391
1991	32 336	12 107	0	0	20 229	12 642	0	0	19 694
1992	28 871	11 529	0	0	17 342	12 084	0	0	16 787
1993	25 974	11 142	0	0	14 832	11 750	0	0	14 224
1994	24 523	11 815	0	0	12 708	12 418	0	0	12 105
1995	23 222	12 794	0	0	10 428	13 518	0	0	9 704
1996	22 266	13 751	0	0	8 515	14 527	0	0	7 739
1997	21 704	14 480	0	0	7 224	15 300	0	0	6 404
1998	22 033	15 344	0	0	6 689	16 238	0	0	5 795
1999	20 632	15 540	0	0	5 092	16 424	0	0	4 208
2000	19 592	15 824	0	0	3 768	16 607	0	0	2 985
2001	17 818	14 947	0	0	2 871	15 591	0	0	2 227
2002	16 895	14 557	0	0	2 338	15 128	0	0	1 767
2003	16 180	14 087	0	0	2 093	14 599	0	0	1 581
2004	16 032	14 256	0	0	1 776	14 722	0	0	1 310
2005	15 880	14 253	0	0	1 627	14 690	0	0	1 190
2006	15 226	13 868	0	0	1 358	14 295	0	0	931
2007	14 452	13 187	0	0	1 265	13 525	0	0	927
2008	13 671	12 540	0	0	1 131	12 825	0	0	846
2009	12 462	11 476	0	0	986	11 760	0	0	702
2010	11 473	10 673	0	0	800	10 893	0	0	580
2011	10 101	9 427	0	0	674	9 651	0	0	450
2012	9 030	8 496	0	0	534	8 687	0	0	343
2013	7 048	6 614	0	0	434	6 805	0	0	243
2014	5 741	5 396	0	0	345	5 563	0	0	178
2015	3 348	3 116	0	0	232	3 254	0	0	94
2016	961	835	0	0	126	954	0	0	7
Total	2 559 008	667 575	3 131	1 361	1 886 941	701 389	3 258	1 369	1 852 992



**Table 5D**  
**Amount of data on foreign-born index persons, by birth year and source for father's registration number and birth date**

Birth year	Total	Source father's registration number			No data	Source father's birth date			No data
		TPR	Personal records	Register of births		TPR	Personal records	Register of births	
1932	15 895	358	10	0	15 527	509	12	0	15 374
1933	15 804	593	11	0	15 200	809	12	0	14 983
1934	17 362	694	19	0	16 649	965	21	0	16 376
1935	18 071	818	31	0	17 222	1 137	32	0	16 902
1936	18 702	907	17	0	17 778	1 293	20	0	17 389
1937	20 054	1 007	25	0	19 022	1 425	26	0	18 603
1938	20 932	1 048	26	0	19 858	1 454	31	0	19 447
1939	22 176	1 178	31	0	20 967	1 692	35	0	20 449
1940	22 283	1 265	22	0	20 996	1 725	26	0	20 532
1941	23 983	1 529	30	0	22 424	2 035	36	0	21 912
1942	22 704	1 518	23	0	21 163	1 905	29	0	20 770
1943	24 277	1 678	33	0	22 566	2 082	38	0	22 157
1944	25 359	1 746	39	0	23 574	2 120	44	0	23 195
1945	27 000	1 858	37	0	25 105	2 253	45	0	24 702
1946	30 894	2 359	82	0	28 453	2 801	94	0	27 999
1947	32 622	2 659	131	0	29 832	3 088	181	0	29 353
1948	33 143	2 698	128	0	30 317	3 153	163	0	29 827
1949	32 894	2 899	136	0	29 859	3 380	145	0	29 369
1950	32 741	2 996	129	0	29 616	3 601	137	0	29 003
1951	31 758	3 118	107	0	28 533	3 842	109	0	27 807
1952	32 204	3 341	122	0	28 741	4 067	125	0	28 012
1953	32 180	3 616	135	0	28 429	4 392	136	0	27 652
1954	33 590	4 135	131	0	29 324	4 971	134	0	28 485
1955	34 006	4 296	134	0	29 576	5 195	137	0	28 674
1956	34 786	4 464	149	0	30 173	5 345	150	0	29 291
1957	35 139	4 721	154	0	30 264	5 602	158	0	29 379
1958	34 638	4 555	115	0	29 968	5 444	120	0	29 074
1959	35 652	5 291	139	0	30 222	6 232	143	0	29 277
1960	38 230	5 416	152	0	32 662	6 319	155	0	31 756
1961	36 960	5 668	84	52	31 156	6 659	84	52	30 165
1962	38 951	5 899	93	98	32 861	6 907	98	98	31 848
1963	39 807	6 331	88	95	33 293	7 378	90	94	32 245
1964	41 188	6 647	89	96	34 356	7 716	93	93	33 286
1965	41 716	6 518	78	123	34 997	7 580	82	119	33 935
1966	41 519	6 392	66	123	34 938	7 463	72	121	33 863
1967	42 178	6 520	83	96	35 479	7 664	83	95	34 336
1968	43 423	6 902	0	130	36 391	8 058	0	138	35 227
1969	42 642	6 292	0	96	36 254	7 377	0	102	35 163
1970	42 811	5 515	0	64	37 232	6 618	0	65	36 128
1971	41 597	5 211	0	52	36 334	6 336	0	53	35 208
1972	43 010	5 855	0	38	37 117	6 963	0	40	36 007
1973	42 781	6 376	0	34	36 371	7 491	0	35	35 255
1974	45 004	6 812	0	6	38 186	7 960	0	6	37 038
1975	45 463	6 832	0	1	38 630	7 989	0	1	37 473
1976	45 624	6 627	0	0	38 997	7 791	0	0	37 833
1977	46 218	6 740	0	1	39 477	7 871	0	1	38 346
1978	47 686	6 902	0	0	40 784	8 048	0	0	39 638
1979	48 357	7 316	0	0	41 041	8 476	0	0	39 881
1980	51 457	7 836	0	1	43 620	9 094	0	3	42 360
1981	49 324	8 077	0	0	41 247	9 307	0	0	40 017

Table 5D (cont.)

Birth year	Total	Source father's registration number			No data	Source father's birth date			No data
		TPR	Personal records	Register of births		TPR	Personal records	Register of births	
1982	51 683	8 777	0	0	42 906	10 077	0	1	41 605
1983	51 346	9 169	0	0	42 177	10 493	0	0	40 853
1984	51 411	9 710	0	0	41 701	11 147	0	0	40 264
1985	49 869	9 877	0	0	39 992	11 336	0	0	38 533
1986	47 991	10 040	0	2	37 949	11 498	0	2	36 491
1987	44 950	9 885	0	0	35 065	11 348	0	0	33 602
1988	42 477	10 252	0	0	32 225	11 862	0	0	30 615
1989	38 958	9 967	0	0	28 991	11 624	0	0	27 334
1990	36 057	9 900	0	1	26 156	11 724	0	1	24 332
1991	32 336	9 741	0	0	22 595	11 657	0	0	20 679
1992	28 871	9 171	0	0	19 700	11 121	0	0	17 750
1993	25 974	8 467	0	0	17 507	10 626	0	0	15 348
1994	24 523	9 055	0	0	15 468	11 278	0	0	13 245
1995	23 222	9 549	0	0	13 673	12 189	0	0	11 033
1996	22 266	10 206	0	0	12 060	13 030	0	0	9 236
1997	21 704	10 867	0	0	10 837	13 790	0	0	7 914
1998	22 033	11 616	0	0	10 417	14 684	0	0	7 349
1999	20 632	11 850	0	0	8 782	14 886	0	0	5 746
2000	19 592	12 269	0	0	7 323	15 152	0	0	4 440
2001	17 818	11 585	0	0	6 233	14 324	0	0	3 494
2002	16 895	11 487	0	0	5 408	13 978	0	0	2 917
2003	16 180	11 222	0	0	4 958	13 529	0	0	2 651
2004	16 032	11 616	0	0	4 416	13 767	0	0	2 265
2005	15 880	11 711	0	0	4 169	13 726	0	0	2 154
2006	15 226	11 586	0	0	3 640	13 406	0	0	1 820
2007	14 452	11 096	0	0	3 356	12 762	0	0	1 690
2008	13 671	10 751	0	0	2 920	12 178	0	0	1 493
2009	12 462	9 955	0	0	2 507	11 163	0	0	1 299
2010	11 473	9 389	0	0	2 084	10 416	0	0	1 057
2011	10 101	8 439	0	0	1 662	9 281	0	0	820
2012	9 030	7 742	0	0	1 288	8 421	0	0	609
2013	7 048	6 120	0	0	928	6 618	0	0	430
2014	5 741	4 939	0	0	802	5 411	0	0	330
2015	3 348	2 871	0	0	477	3 173	0	0	175
2016	961	797	0	0	164	917	0	0	44
Total	2 559 008	541 703	2 879	1 109	2 013 317	642 174	3 096	1 120	1 912 618

**Table 6**  
**Number of registration number thought to be re-used, by**  
**birth year of index person**

Birth year	Index persons	Biological mother	Biological father
1932	88	50	45
1933	85	62	115
1934	97	82	117
1935	73	69	123
1936	89	67	129
1937	107	74	123
1938	104	76	119
1939	108	76	105
1940	132	69	113
1941	135	59	112
1942	125	76	121
1943	157	84	131
1944	169	87	134
1945	184	73	134
1946	283	80	110
1947	417	75	110
1948	395	70	111
1949	402	49	92
1950	366	61	92
1951	360	56	78
1952	375	58	79
1953	361	54	74
1954	332	49	81
1955	301	53	108
1956	325	52	59
1957	330	56	75
1958	278	57	77
1959	333	58	73
1960	361	61	73
1961	249	61	89
1962	273	63	95
1963	260	65	93
1964	285	64	83
1965	266	73	109
1966	252	95	100
1967	264	90	95
1968	265	85	118
1969	241	91	125
1970	229	107	101
1971	186	113	126
1972	213	135	144
1973	201	130	173
1974	107	130	184
1975	92	146	178
1976	125	152	192
1977	103	134	186
1978	121	156	208
1979	83	145	208
1980	126	164	203
1981	97	176	241

**Table 6 (cont.)**

Birth year	Index persons	Biological mother	Biological father
1982	82	182	250
1983	96	202	245
1984	92	205	280
1985	82	207	262
1986	102	214	272
1987	99	216	303
1988	81	232	289
1989	89	254	290
1990	77	198	280
1991	107	237	328
1992	87	228	264
1993	74	223	320
1994	61	197	271
1995	84	214	297
1996	70	194	259
1997	84	201	256
1998	64	163	236
1999	72	156	255
2000	59	140	243
2001	52	144	211
2002	53	138	205
2003	28	108	187
2004	30	114	210
2005	35	102	175
2006	17	97	209
2007	12	105	183
2008	6	105	184
2009	6	89	174
2010	2	107	178
2011	0	102	180
2012	2	78	175
2013	2	74	138
2014	2	69	148
2015	1	63	124
2016	0	61	124
<b>Total</b>	<b>12 720</b>	<b>9 687</b>	<b>13 969</b>

**Table 7**  
**Average number of children per mother, by birth cohort and country of birth**

Birth year	Total number of mothers	Mothers born in Sweden	Foreign-born mothers	Unknown country of birth of mother
1874	1	0,00	0,00	1,00
1875	2	0,00	0,00	1,00
1876	1	0,00	0,00	1,00
1877	1	0,00	0,00	1,00
1878	1	0,00	0,00	1,00
1879	2	1,00	0,00	1,00
1880	5	1,00	0,00	1,00
1881	1	0,00	0,00	1,00
1882	2	1,00	0,00	1,00
1883	9	1,00	0,00	1,17
1884	16	1,00	0,00	1,00
1885	54	1,03	0,00	1,00
1886	133	1,05	0,00	1,00
1887	269	1,03	1,00	1,01
1888	545	1,04	1,06	1,06
1889	916	1,06	1,07	1,05
1890	1 490	1,10	1,08	1,09
1891	2 161	1,13	1,07	1,12
1892	2 753	1,17	1,13	1,18
1893	3 972	1,22	1,22	1,21
1894	5 010	1,27	1,20	1,23
1895	6 194	1,32	1,28	1,28
1896	7 486	1,37	1,39	1,32
1897	8 802	1,42	1,42	1,38
1898	10 573	1,47	1,55	1,44
1899	12 046	1,52	1,46	1,45
1900	14 388	1,59	1,63	1,47
1901	16 542	1,64	1,63	1,59
1902	18 862	1,70	1,67	1,65
1903	20 927	1,75	1,81	1,64
1904	23 445	1,82	1,91	1,68
1905	26 116	1,88	1,86	1,70
1906	28 604	1,94	1,93	1,74
1907	31 081	2,01	1,94	1,82
1908	33 392	2,07	2,04	1,85
1909	36 271	2,12	2,01	1,82
1910	36 790	2,18	2,11	1,87
1911	38 285	2,22	2,09	1,84
1912	40 283	2,27	2,20	1,93
1913	40 862	2,30	2,18	1,85
1914	41 834	2,33	2,21	1,88
1915	40 776	2,33	2,24	1,94
1916	41 083	2,32	2,26	1,93
1917	42 065	2,33	2,26	1,81
1918	41 853	2,35	2,30	1,77
1919	41 811	2,35	2,23	1,82
1920	51 119	2,33	2,31	1,72
1921	48 074	2,33	2,29	1,71
1922	45 148	2,34	2,27	1,66
1923	44 522	2,34	2,34	1,67
1924	43 814	2,34	2,34	1,65
1925	43 377	2,35	2,34	1,57
1926	42 214	2,36	2,38	1,65
1927	41 345	2,38	2,38	1,65
1928	42 225	2,39	2,42	1,70

Table 7 (cont.)

Birth year	Total number of mothers	Mothers born in Sweden	Foreign-born mothers	Unknown country of birth of mother
1929	40 599	2,38	2,47	1,67
1930	41 766	2,39	2,44	1,61
1931	40 974	2,41	2,46	1,61
1932	40 809	2,41	2,46	1,77
1933	39 011	2,40	2,45	1,76
1934	39 745	2,42	2,40	1,75
1935	40 034	2,39	2,43	1,83
1936	41 944	2,38	2,39	1,70
1937	42 689	2,37	2,37	1,68
1938	44 676	2,34	2,34	1,74
1939	46 449	2,32	2,32	1,66
1940	45 503	2,31	2,34	1,60
1941	48 045	2,28	2,28	1,49
1942	53 127	2,26	2,24	1,51
1943	58 351	2,25	2,21	1,45
1944	61 951	2,24	2,20	1,38
1945	62 971	2,21	2,18	1,28
1946	63 867	2,23	2,14	1,32
1947	63 056	2,23	2,12	1,26
1948	62 448	2,24	2,13	1,23
1949	59 997	2,25	2,13	1,19
1950	57 104	2,26	2,16	1,13
1951	54 614	2,27	2,16	1,08
1952	54 607	2,28	2,19	1,06
1953	54 497	2,31	2,22	1,33
1954	52 770	2,32	2,28	1,21
1955	53 752	2,33	2,25	1,55
1956	53 812	2,34	2,28	1,60
1957	54 205	2,35	2,28	1,37
1958	52 944	2,36	2,31	1,43
1959	52 956	2,35	2,33	1,50
1960	53 154	2,35	2,38	1,87
1961	53 193	2,33	2,32	1,20
1962	55 068	2,33	2,36	1,33
1963	57 478	2,31	2,34	1,87
1964	62 206	2,29	2,35	1,08
1965	62 390	2,28	2,37	1,25
1966	62 183	2,26	2,35	1,56
1967	61 847	2,25	2,34	1,80
1968	59 572	2,23	2,33	1,29
1969	56 978	2,22	2,36	2,15
1970	58 478	2,22	2,38	1,90
1971	59 417	2,21	2,31	1,57
1972	59 296	2,21	2,37	4,00
1973	58 230	2,20	2,32	1,83
1974	58 882	2,19	2,35	2,60
1975	56 231	2,18	2,34	1,67
1976	53 518	2,17	2,31	3,87
1977	52 127	2,15	2,29	2,33
1978	50 862	2,12	2,26	2,38
1979	51 060	2,09	2,20	2,83
1980	51 221	2,05	2,22	2,79
1981	48 060	1,99	2,11	2,42
1982	45 800	1,94	2,08	2,14
1983	43 220	1,87	2,02	1,86

Table 7 (cont.)

Birth year	Total number of mothers	Mothers born in Sweden	Foreign-born mothers	Unknown country of birth of mother
1984	41 082	1,80	1,97	2,12
1985	38 868	1,73	1,96	1,92
1986	35 793	1,68	1,90	2,56
1987	31 547	1,63	1,82	1,86
1988	28 185	1,57	1,80	1,67
1989	23 879	1,50	1,72	1,44
1990	19 991	1,45	1,66	2,00
1991	15 080	1,38	1,59	1,00
1992	11 055	1,32	1,53	1,00
1993	7 560	1,24	1,45	1,00
1994	4 924	1,20	1,37	2,00
1995	3 116	1,16	1,30	1,75
1996	1 728	1,10	1,26	2,00
1997	844	1,06	1,25	0,00
1998	394	1,05	1,14	0,00
1999	164	1,03	1,18	0,00
2000	60	1,00	1,04	0,00
2001	14	1,00	1,00	0,00
2002	3	1,00	1,00	0,00
2003	2	1,00	0,00	0,00
Total	4 033 422	2,20	2,20	1,64

**Table 8**  
**Average number of children per father, by birth cohort and country of birth**

Birth year	Total number of fathers	Fathers born in Sweden	Foreign-born fathers	Unknown country of birth of father
1854	1	0,00	0,00	1,00
1857	3	0,00	0,00	1,00
1859	2	0,00	0,00	1,00
1860	1	0,00	0,00	1,00
1861	1	0,00	0,00	1,00
1862	7	0,00	0,00	1,00
1863	3	0,00	0,00	1,67
1864	6	0,00	0,00	1,00
1865	14	0,00	0,00	1,29
1866	11	0,00	0,00	1,09
1867	19	1,50	0,00	1,18
1868	23	2,67	0,00	1,05
1869	39	1,10	0,00	1,28
1870	52	1,54	0,00	1,54
1871	66	2,00	2,00	1,42
1872	86	1,28	0,00	1,31
1873	102	1,22	0,00	1,23
1874	144	1,38	1,00	1,29
1875	192	1,65	1,00	1,39
1876	219	1,34	1,00	1,41
1877	330	1,39	1,00	1,45
1878	384	1,43	0,00	1,47
1879	495	1,46	1,50	1,47
1880	612	1,46	1,00	1,43
1881	776	1,42	1,43	1,38
1882	963	1,44	1,25	1,39
1883	1 189	1,51	1,18	1,37
1884	1 558	1,49	1,07	1,45
1885	1 880	1,47	1,41	1,43
1886	2 409	1,51	1,86	1,39
1887	2 943	1,46	1,54	1,40
1888	3 510	1,48	1,50	1,42
1889	4 062	1,50	1,41	1,47
1890	4 884	1,51	1,37	1,50
1891	5 927	1,59	1,49	1,48
1892	6 868	1,62	1,91	1,58
1893	8 187	1,62	1,54	1,49
1894	9 364	1,63	1,59	1,55
1895	11 124	1,68	1,53	1,57
1896	12 595	1,71	1,67	1,62
1897	14 267	1,75	1,71	1,60
1898	16 275	1,81	1,72	1,67
1899	17 802	1,84	1,76	1,70
1900	20 467	1,89	1,88	1,72
1901	22 703	1,94	1,86	1,77
1902	24 899	1,98	1,93	1,78
1903	26 106	2,04	1,89	1,83
1904	28 506	2,08	2,01	1,84
1905	30 372	2,13	2,11	1,88
1906	32 889	2,16	2,18	1,89
1907	34 463	2,19	2,10	1,91
1908	36 623	2,24	2,11	1,93
1909	38 959	2,26	2,19	1,90
1910	39 085	2,28	2,17	1,95
1911	39 452	2,28	2,20	1,90



Table 8 (cont.)

Birth year	Total number of fathers	Fathers born in Sweden	Foreign-born fathers	Unknown country of birth of father
1912	40 685	2,30	2,18	1,94
1913	40 762	2,31	2,27	1,96
1914	40 545	2,32	2,21	1,90
1915	39 313	2,31	2,24	1,88
1916	39 545	2,32	2,32	1,86
1917	40 529	2,31	2,35	1,79
1918	40 254	2,32	2,36	1,71
1919	40 133	2,30	2,34	1,75
1920	48 522	2,30	2,38	1,71
1921	45 454	2,30	2,40	1,74
1922	42 145	2,31	2,39	1,67
1923	42 318	2,33	2,44	1,74
1924	41 251	2,34	2,42	1,71
1925	40 967	2,36	2,50	1,68
1926	39 773	2,37	2,44	1,58
1927	38 965	2,38	2,47	1,64
1928	39 712	2,39	2,48	1,59
1929	38 378	2,41	2,48	1,67
1930	39 433	2,41	2,50	1,69
1931	38 962	2,41	2,48	1,69
1932	38 980	2,40	2,46	1,70
1933	37 874	2,41	2,47	1,64
1934	38 512	2,39	2,44	1,60
1935	39 738	2,37	2,44	1,64
1936	41 160	2,37	2,36	1,58
1937	42 670	2,35	2,34	1,58
1938	44 601	2,34	2,33	1,52
1939	46 487	2,32	2,36	1,55
1940	46 111	2,30	2,34	1,44
1941	48 326	2,29	2,27	1,46
1942	54 341	2,29	2,29	1,38
1943	58 362	2,28	2,24	1,41
1944	61 883	2,26	2,30	1,42
1945	62 382	2,27	2,30	1,24
1946	62 276	2,29	2,25	1,31
1947	61 048	2,29	2,30	1,31
1948	59 802	2,31	2,30	1,30
1949	57 211	2,31	2,33	1,23
1950	55 057	2,32	2,41	1,56
1951	51 796	2,34	2,39	1,25
1952	52 135	2,34	2,45	1,45
1953	52 127	2,34	2,50	1,40
1954	50 806	2,34	2,50	1,48
1955	51 370	2,35	2,49	1,43
1956	52 335	2,35	2,55	1,65
1957	51 459	2,35	2,53	1,44
1958	50 897	2,33	2,52	1,33
1959	51 109	2,32	2,55	1,37
1960	50 382	2,30	2,58	1,42
1961	51 026	2,30	2,49	1,46
1962	53 136	2,28	2,52	1,59
1963	55 875	2,26	2,50	2,00
1964	59 786	2,25	2,53	1,50
1965	59 882	2,24	2,54	1,31
1966	59 620	2,21	2,52	1,61

**Table 8 (cont.)**

Birth year	Total number of fathers	Fathers born in Sweden	Foreign-born fathers	Unknown country of birth of father
1967	58 930	2,20	2,48	1,33
1968	55 430	2,18	2,50	1,90
1969	53 121	2,17	2,50	1,74
1970	53 429	2,16	2,48	1,72
1971	54 967	2,15	2,41	2,08
1972	54 486	2,14	2,42	2,27
1973	53 341	2,12	2,35	2,08
1974	53 535	2,11	2,33	1,55
1975	50 482	2,09	2,29	2,70
1976	47 844	2,07	2,21	2,44
1977	46 472	2,04	2,18	2,69
1978	44 343	2,00	2,10	1,78
1979	44 220	1,95	2,05	2,50
1980	43 492	1,91	2,00	2,33
1981	39 226	1,85	1,91	2,90
1982	37 059	1,79	1,90	2,00
1983	33 874	1,71	1,80	2,29
1984	31 091	1,66	1,76	1,62
1985	28 343	1,61	1,70	1,67
1986	24 208	1,54	1,63	1,67
1987	19 993	1,49	1,59	1,67
1988	17 029	1,44	1,54	1,29
1989	13 262	1,39	1,46	2,00
1990	10 370	1,32	1,41	1,25
1991	7 237	1,28	1,36	2,00
1992	4 758	1,24	1,35	1,00
1993	2 871	1,18	1,30	1,50
1994	1 634	1,12	1,24	1,00
1995	829	1,10	1,18	0,00
1996	454	1,08	1,16	0,00
1997	202	1,06	1,08	0,00
1998	91	1,02	1,08	0,00
1999	26	1,05	1,00	0,00
2000	9	1,00	1,00	0,00
2001	5	1,00	1,00	0,00
Total	4 118 790	2,21	2,31	1,69

**Table 9**  
**Number of index persons where Population and Housing Census mother and grandmothers are in agreement, broken down by Population and Housing Census year and age group**

Year of Population and Housing Census	Age group	Number of index persons where PHC-mother and biological mother <i>not</i> agree	Of which – number of index persons where PHC-mother and grandmother agree	
			Number	Share
60	0–6	29 367	14 094	0,48
	7–12	20 424	1 379	0,07
	13–16	20 431	3	0,00
	17–20	13 891	0	0,00
	21–	3 924	0	0,00
	Total	88 037	15 476	0,18
65	0–6	32 512	21 193	0,65
	7–12	16 234	3 931	0,24
	13–16	15 219	677	0,04
	17–20	14 533	8	0,00
	21–	6 027	0	0,00
	Total	84 525	25 809	0,31
70	0–6	19 737	13 507	0,68
	7–12	12 737	4 572	0,36
	13–16	11 088	2 000	0,18
	17–20	9 654	725	0,08
	21–	6 048	22	0,00
	Total	59 264	20 826	0,35
75	0–6	9 348	5 532	0,59
	7–12	12 295	3 794	0,31
	13–16	10 701	2 245	0,21
	17–20	6 660	858	0,13
	21–	3 556	134	0,04
	Total	42 560	12 563	0,30
80	0–6	12 170	5 665	0,47
	7–12	15 422	4 053	0,26
	13–16	15 159	3 187	0,21
	17–20	9 430	1 712	0,18
	21–	4 440	385	0,09
	Total	56 621	15 002	0,26
85	0–6	8 608	3 907	0,45
	7–12	12 750	2 306	0,18
	13–16	12 925	1 745	0,14
	17–20	9 963	1 357	0,14
	21–	3 979	505	0,13
	Total	48 225	9 820	0,20
90	0–6	6 185	2 886	0,47
	7–12	9 076	1 276	0,14
	13–16	10 777	947	0,09
	17–20	8 687	790	0,09
	21–	3 103	464	0,15
	Total	37 828	6 363	0,17

**Table 10**  
**Number of index persons where Population and Housing Census father and grandfathers are in agreement, broken down by Population and Housing Census year and age group**

Year of Population and Housing Census	Age group	Number of index persons where PHC-father and biological father <i>not</i> agree	Of which – number of index persons where PHC-father and grandfather agree	
			Number	Share
60	0-6	30 708	10 272	0,33
	7-12	30 607	863	0,03
	13-16	26 453	2	0,00
	17-20	15 056	0	0,00
	21-	4 003	0	0,00
	Total	106 827	11 137	0,10
65	0-6	34 217	15 399	0,45
	7-12	29 021	2 624	0,09
	13-16	24 768	400	0,02
	17-20	20 236	4	0,00
	21-	7 127	0	0,00
	Total	115 369	18 427	0,16
70	0-6	24 895	9 920	0,40
	7-12	28 051	3 031	0,11
	13-16	21 960	1 253	0,06
	17-20	16 908	432	0,03
	21-	7 889	12	0,00
	Total	99 703	14 648	0,15
75	0-6	19 278	4 151	0,22
	7-12	41 754	2 525	0,06
	13-16	26 050	1 338	0,05
	17-20	14 509	480	0,03
	21-	6 258	77	0,01
	Total	107 849	8 571	0,08
80	0-6	20 250	4 548	0,22
	7-12	46 474	2 966	0,06
	13-16	42 211	2 113	0,05
	17-20	22 074	1 043	0,05
	21-	7 787	232	0,03
	Total	138 796	10 902	0,08
85	0-6	17 013	2 893	0,17
	7-12	42 874	1 630	0,04
	13-16	39 371	1 052	0,03
	17-20	30 123	779	0,03
	21-	9 304	265	0,03
	Total	138 685	6 619	0,05
90	0-6	15 520	1 980	0,13
	7-12	37 513	753	0,02
	13-16	35 320	532	0,02
	17-20	27 278	419	0,02
	21-	8 613	210	0,02
	Total	124 244	3 894	0,03

**Table 11**  
**Number and share of deceased index persons born in Sweden, by birth year and year of death with information on parents**

Birth year	Total no. deceased	Deceased 1961 – 1967			Deceased 1968 – 30 June 1991			Deceased 1 July 1991 – 2016		
		Number	Share with data on		Number	Share with data on		Number	Share with data on	
			Mother	Father		Mother	Father		Mother	Father
1932	43 001	579	0,33	0,31	6 392	0,09	0,03	36 030	0,39	0,34
1933	37 747	557	0,69	0,67	5 627	0,17	0,06	31 563	0,72	0,65
1934	35 105	514	0,83	0,78	5 192	0,21	0,08	29 398	0,85	0,78
1935	32 601	498	0,87	0,83	4 767	0,25	0,10	27 336	0,90	0,82
1936	30 884	485	0,88	0,86	4 425	0,28	0,11	25 974	0,91	0,84
1937	29 163	454	0,91	0,86	4 202	0,30	0,13	24 507	0,92	0,85
1938	27 692	437	0,92	0,90	3 971	0,33	0,14	23 284	0,93	0,86
1939	26 859	531	0,91	0,87	3 854	0,37	0,17	22 474	0,93	0,87
1940	24 138	523	0,92	0,86	3 492	0,40	0,19	20 123	0,94	0,88
1941	23 263	517	0,94	0,90	3 376	0,41	0,21	19 370	0,95	0,90
1942	24 455	574	0,95	0,90	3 451	0,45	0,23	20 430	0,96	0,90
1943	25 421	622	0,95	0,93	3 684	0,47	0,24	21 115	0,96	0,91
1944	25 018	661	0,96	0,91	3 616	0,50	0,27	20 741	0,97	0,92
1945	22 794	688	0,97	0,92	3 385	0,54	0,29	18 721	0,97	0,92
1946	20 823	559	0,97	0,93	3 201	0,57	0,31	17 063	0,98	0,93
1947	18 611	523	0,97	0,93	2 939	0,58	0,34	15 149	0,98	0,94
1948	16 679	425	0,99	0,95	2 765	0,62	0,38	13 489	0,99	0,95
1949	14 736	380	0,99	0,97	2 532	0,64	0,37	11 824	0,99	0,95
1950	13 150	283	0,99	0,96	2 301	0,66	0,43	10 566	0,99	0,96
1951	11 739	237	1,00	0,97	2 157	0,68	0,45	9 345	0,99	0,96
1952	10 514	257	0,99	0,95	1 993	0,70	0,46	8 264	0,99	0,96
1953	9 813	246	1,00	0,95	1 959	0,72	0,51	7 608	0,99	0,97
1954	8 730	201	0,99	0,97	1 803	0,74	0,54	6 726	0,99	0,97
1955	8 483	272	0,99	0,95	1 759	0,76	0,56	6 452	0,99	0,97
1956	7 717	292	0,99	0,97	1 593	0,79	0,59	5 832	0,99	0,97
1957	7 030	315	0,98	0,96	1 495	0,80	0,61	5 220	1,00	0,97
1958	6 274	328	0,98	0,97	1 376	0,81	0,64	4 570	1,00	0,97
1959	5 766	393	0,98	0,96	1 313	0,81	0,62	4 060	1,00	0,98
1960	5 617	479	0,98	0,96	1 321	0,83	0,66	3 817	1,00	0,98
1961	6 627	1 908	1,00	0,88	1 215	1,00	0,92	3 504	1,00	0,98
1962	6 209	1 824	1,00	0,88	1 088	1,00	0,95	3 297	1,00	0,98
1963	6 092	1 806	1,00	0,88	1 212	1,00	0,93	3 074	1,00	0,98
1964	6 186	1 815	1,00	0,87	1 242	1,00	0,94	3 129	1,00	0,98
1965	5 652	1 621	1,00	0,86	1 162	1,00	0,95	2 869	1,00	0,98
1966	5 137	1 491	1,00	0,86	1 126	1,00	0,95	2 520	1,00	0,98
1967	4 862	1 317	1,00	0,86	1 169	1,00	0,94	2 376	1,00	0,98
1968	4 175	.	.	.	2 277	1,00	0,90	1 898	1,00	0,98
1969	3 657	.	.	.	1 859	1,00	0,88	1 798	1,00	0,98
1970	3 583	.	.	.	1 853	1,00	0,88	1 730	1,00	0,98
1971	3 482	.	.	.	1 828	1,00	0,87	1 654	1,00	0,98
1972	3 240	.	.	.	1 702	1,00	0,85	1 538	1,00	0,99
1973	3 021	.	.	.	1 549	1,00	0,83	1 472	1,00	0,99
1974	2 961	.	.	.	1 505	1,00	0,84	1 456	1,00	0,99
1975	2 518	.	.	.	1 221	1,00	0,82	1 297	1,00	0,99
1976	2 284	.	.	.	1 130	1,00	0,83	1 154	1,00	0,99
1977	2 148	.	.	.	1 024	0,99	0,82	1 124	1,00	0,99
1978	1 936	.	.	.	932	0,99	0,81	1 004	1,00	0,99
1979	1 969	.	.	.	944	1,00	0,80	1 025	1,00	0,99
1980	1 925	.	.	.	859	1,00	0,86	1 066	1,00	0,99
1981	1 776	.	.	.	792	1,00	0,84	984	1,00	0,99

Table 11 (cont.)

Birth year	Total no. deceased	Deceased 1961 – 1967			Deceased 1968 – 30 June 1991			Deceased 1 July 1991 – 2016		
		Number	Share with data on		Number	Share with data on		Number	Share with data on	
			Mother	Father		Mother	Father		Mother	Father
1982	1 739	.	.	.	785	0,99	0,83	954	1,00	0,99
1983	1 696	.	.	.	808	1,00	0,87	888	1,00	1,00
1984	1 582	.	.	.	756	1,00	0,89	826	1,00	0,99
1985	1 619	.	.	.	782	1,00	0,87	837	1,00	0,99
1986	1 614	.	.	.	715	0,99	0,84	899	1,00	0,99
1987	1 540	.	.	.	747	0,99	0,87	793	1,00	0,99
1988	1 530	.	.	.	723	1,00	0,84	807	1,00	1,00
1989	1 547	.	.	.	736	0,99	0,83	811	1,00	0,99
1990	1 601	.	.	.	741	0,99	0,83	860	1,00	0,99
1991	1 412	.	.	.	289	0,99	0,79	1 123	1,00	0,94
1992	1 248	.	.	.	.	.	.	1 248	0,99	0,91
1993	1 074	.	.	.	.	.	.	1 074	0,99	0,91
1994	932	.	.	.	.	.	.	932	1,00	0,92
1995	786	.	.	.	.	.	.	786	0,99	0,90
1996	643	.	.	.	.	.	.	643	1,00	0,91
1997	561	.	.	.	.	.	.	561	1,00	0,90
1998	499	.	.	.	.	.	.	499	1,00	0,91
1999	479	.	.	.	.	.	.	479	1,00	0,90
2000	465	.	.	.	.	.	.	465	1,00	0,91
2001	478	.	.	.	.	.	.	478	1,00	0,90
2002	452	.	.	.	.	.	.	452	1,00	0,90
2003	458	.	.	.	.	.	.	458	1,00	0,90
2004	421	.	.	.	.	.	.	421	1,00	0,87
2005	370	.	.	.	.	.	.	370	1,00	0,93
2006	384	.	.	.	.	.	.	384	1,00	0,91
2007	375	.	.	.	.	.	.	375	1,00	0,87
2008	371	.	.	.	.	.	.	371	1,00	0,89
2009	365	.	.	.	.	.	.	365	1,00	0,91
2010	361	.	.	.	.	.	.	361	1,00	0,88
2011	287	.	.	.	.	.	.	287	1,00	0,91
2012	350	.	.	.	.	.	.	350	1,00	0,88
2013	337	.	.	.	.	.	.	337	1,00	0,89
2014	281	.	.	.	.	.	.	281	1,00	0,89
2015	297	.	.	.	.	.	.	297	1,00	0,86
2016	254	.	.	.	.	.	.	254	0,99	0,81
Total	681 671	24 612	0,95	0,87	124 712	0,60	0,43	532 346	0,90	0,85

**Table 12**  
**Number of data for deceased index persons born in Sweden, by variables and source**

Variable	Source				No data
	TPR	Personal record	Register of births	Population and Housing Census	
Own country of birth	669 034	11 477	1 790	32	0
Biological mother's country of birth	562 075	1 417	133	931	117 777
Biological father's country of birth	499 876	1 829	0	1 421	179 207
Biological mother's reg. no.	560 161	11 680	6 909	0	103 583
Biological mother's birth date	576 279	11 990	6 944	0	87 120
Biological father's reg. no.	507 795	14 172	6 168	0	154 198
Biological father's birth date	538 708	15 032	6 188	0	122 405

**Table 13A**  
**Number and share of deceased index persons born in Sweden, with information on mother, by year of death and source**

Death year	All deceased	Source mother's registration number							
		TPR		Personal record		Register of births		Total with data on mother	
		Number	Share	Number	Share	Number	Share	Number	Share
1961	3 269	1 474	0,45	1599	0,49	53		0,02	3 126
1962	3 305	1 560	0,47	1575	0,48	36		0,01	3 171
1963	3 557	1 641	0,46	1693	0,48	50		0,01	3 384
1964	3 618	1 687	0,47	1759	0,49	33		0,01	3 479
1965	3 623	1 738	0,48	1691	0,47	39		0,01	3 468
1966	3 595	1 799	0,50	1567	0,44	47		0,01	3 413
1967	3 645	1 687	0,46	1661	0,46	60		0,02	3 408
1968	3 859	1 880	0,49	4	0,00	609		0,16	2 493
1969	3 700	1 862	0,50	1	0,00	506		0,14	2 369
1970	3 791	1 912	0,50	1	0,00	483		0,13	2 396
1971	3 898	1 990	0,51	2	0,00	459		0,12	2 451
1972	4 074	2 073	0,51	1	0,00	418		0,10	2 492
1973	4 008	2 059	0,51	2	0,00	372		0,09	2 433
1974	4 185	2 129	0,51	4	0,00	365		0,09	2 498
1975	4 363	2 254	0,52	3	0,00	326		0,07	2 583
1976	4 463	2 238	0,50	1	0,00	302		0,07	2 541
1977	4 525	2 145	0,47	3	0,00	294		0,06	2 442
1978	4 700	2 247	0,48	5	0,00	276		0,06	2 528
1979	4 940	2 394	0,48	9	0,00	288		0,06	2 691
1980	5 032	2 644	0,53	4	0,00	207		0,04	2 855
1981	4 936	2 878	0,58	4	0,00	141		0,03	3 023
1982	5 181	3 010	0,58	3	0,00	162		0,03	3 175
1983	5 482	3 121	0,57	1	0,00	169		0,03	3 291
1984	5 720	3 276	0,57	5	0,00	144		0,03	3 425
1985	6 136	3 563	0,58	4	0,00	151		0,02	3 718
1986	6 566	3 727	0,57	8	0,00	152		0,02	3 887
1987	7 021	4 014	0,57	8	0,00	146		0,02	4 168
1988	7 645	4 389	0,57	8	0,00	184		0,02	4 581
1989	7 835	4 523	0,58	4	0,00	160		0,02	4 687
1990	8 283	4 630	0,56	9	0,00	172		0,02	4 811
1991	8 973	7 024	0,78	2	0,00	66		0,01	7 092
1992	9 118	8 241	0,90	0	0,00	1		0,00	8 242
1993	9 665	8 683	0,90	1	0,00	0		0,00	8 684
1994	10 166	9 175	0,90	0	0,00	1		0,00	9 176
1995	10 582	9 509	0,90	1	0,00	2		0,00	9 512
1996	11 116	9 941	0,89	0	0,00	0		0,00	9 941
1997	11 759	10 555	0,90	0	0,00	0		0,00	10 555
1998	12 579	11 279	0,90	0	0,00	3		0,00	11 282
1999	13 432	12 053	0,90	1	0,00	0		0,00	12 054
2000	14 350	12 911	0,90	0	0,00	0		0,00	12 911
2001	15 542	13 997	0,90	0	0,00	1		0,00	13 998
2002	16 504	14 782	0,90	1	0,00	1		0,00	14 784
2003	17 745	15 920	0,90	2	0,00	1		0,00	15 923
2004	19 085	17 085	0,90	2	0,00	2		0,00	17 089
2005	20 168	18 212	0,90	1	0,00	1		0,00	18 214
2006	21 370	19 302	0,90	0	0,00	0		0,00	19 302
2007	22 694	20 510	0,90	0	0,00	1		0,00	20 511
2008	24 345	21 971	0,90	2	0,00	1		0,00	21 974
2009	25 831	23 285	0,90	2	0,00	2		0,00	23 289
2010	27 919	25 198	0,90	1	0,00	2		0,00	25 201
2011	29 507	26 619	0,90	2	0,00	4		0,00	26 625
2012	31 995	28 939	0,90	3	0,00	4		0,00	28 946
2013	34 191	30 802	0,90	1	0,00	5		0,00	30 808
2014	36 223	32 767	0,90	1	0,00	1		0,00	32 769
2015	39 536	35 779	0,90	0	0,00	4		0,00	35 783
2016	42 321	38 446	0,91	0	0,00	2		0,00	38 448
Total	639 350	521 083	0,82	11 662	0,02	6 907		0,01	539 652



**Table 13B**  
**Number and share of deceased index persons born in Sweden, with information on father, by year of death and source**

Death year	All deceased	Source father's registration number							
		TPR		Personal record		Register of births		Total with data on father	
		Number	Share	Number	Share	Number	Share	Number	Share
1961	3 269	914	0,28	1889	0,58	45	0,01	2 848	0,87
1962	3 305	974	0,29	1881	0,57	41	0,01	2 896	0,88
1963	3 557	999	0,28	2063	0,58	48	0,01	3 110	0,87
1964	3 618	1 024	0,28	2116	0,58	39	0,01	3 179	0,88
1965	3 623	1 110	0,31	2034	0,56	30	0,01	3 174	0,88
1966	3 595	1 098	0,31	2009	0,56	42	0,01	3 149	0,88
1967	3 645	1 033	0,28	2051	0,56	55	0,02	3 139	0,86
1968	3 859	1 363	0,35	1	0,00	610	0,16	1 974	0,51
1969	3 700	1 333	0,36	1	0,00	514	0,14	1 848	0,50
1970	3 791	1 465	0,39	1	0,00	418	0,11	1 884	0,50
1971	3 898	1 561	0,40	3	0,00	370	0,09	1 934	0,50
1972	4 074	1 607	0,39	1	0,00	338	0,08	1 946	0,48
1973	4 008	1 578	0,39	3	0,00	272	0,07	1 853	0,46
1974	4 185	1 662	0,40	5	0,00	298	0,07	1 965	0,47
1975	4 363	1 727	0,40	2	0,00	239	0,05	1 968	0,45
1976	4 463	1 774	0,40	1	0,00	228	0,05	2 003	0,45
1977	4 525	1 596	0,35	1	0,00	237	0,05	1 834	0,41
1978	4 700	1 725	0,37	4	0,00	225	0,05	1 954	0,42
1979	4 940	1 793	0,36	9	0,00	220	0,04	2 022	0,41
1980	5 032	1 820	0,36	2	0,00	177	0,04	1 999	0,40
1981	4 936	1 952	0,40	2	0,00	142	0,03	2 096	0,42
1982	5 181	1 923	0,37	2	0,00	136	0,03	2 061	0,40
1983	5 482	2 026	0,37	1	0,00	172	0,03	2 199	0,40
1984	5 720	2 144	0,37	4	0,00	153	0,03	2 301	0,40
1985	6 136	2 325	0,38	2	0,00	167	0,03	2 494	0,41
1986	6 566	2 427	0,37	6	0,00	154	0,02	2 587	0,39
1987	7 021	2 540	0,36	8	0,00	163	0,02	2 711	0,39
1988	7 645	2 791	0,37	1	0,00	163	0,02	2 955	0,39
1989	7 835	2 905	0,37	5	0,00	150	0,02	3 060	0,39
1990	8 283	3 044	0,37	5	0,00	168	0,02	3 217	0,39
1991	8 973	6 128	0,68	1	0,00	58	0,01	6 187	0,69
1992	9 118	7 742	0,85	1	0,00	2	0,00	7 745	0,85
1993	9 665	8 111	0,84	0	0,00	1	0,00	8 112	0,84
1994	10 166	8 633	0,85	0	0,00	6	0,00	8 639	0,85
1995	10 582	8 882	0,84	1	0,00	2	0,00	8 885	0,84
1996	11 116	9 310	0,84	0	0,00	0	0,00	9 310	0,84
1997	11 759	9 922	0,84	0	0,00	3	0,00	9 925	0,84
1998	12 579	10 600	0,84	1	0,00	3	0,00	10 604	0,84
1999	13 432	11 323	0,84	1	0,00	3	0,00	11 327	0,84
2000	14 350	12 170	0,85	0	0,00	5	0,00	12 175	0,85
2001	15 542	13 125	0,84	1	0,00	3	0,00	13 129	0,84
2002	16 504	13 910	0,84	1	0,00	1	0,00	13 912	0,84
2003	17 745	14 997	0,85	2	0,00	3	0,00	15 002	0,85
2004	19 085	16 079	0,84	1	0,00	5	0,00	16 085	0,84
2005	20 168	17 178	0,85	1	0,00	2	0,00	17 181	0,85
2006	21 370	18 131	0,85	2	0,00	2	0,00	18 135	0,85
2007	22 694	19 402	0,85	1	0,00	6	0,00	19 409	0,86
2008	24 345	20 771	0,85	2	0,00	5	0,00	20 778	0,85
2009	25 831	22 000	0,85	1	0,00	7	0,00	22 008	0,85
2010	27 919	23 748	0,85	0	0,00	2	0,00	23 750	0,85
2011	29 507	25 115	0,85	3	0,00	8	0,00	25 126	0,85
2012	31 995	27 319	0,85	2	0,00	4	0,00	27 325	0,85
2013	34 191	29 198	0,85	0	0,00	4	0,00	29 202	0,85
2014	36 223	31 039	0,86	1	0,00	5	0,00	31 045	0,86
2015	39 536	33 855	0,86	1	0,00	10	0,00	33 866	0,86
2016	42 321	36 271	0,86	2	0,00	4	0,00	36 277	0,86
Total	678 402	506 278	0,75	12 250	0,02	6 123	0,01	524 651	0,77

**Table 14**  
**Number of index persons by number of ancestors in previous generations**

Number of ancestors	Number of previous generations				
	1 Parents (maximum 2)	2 Grandparents (maximum 4)	3 Great-grand- parents (maximum 8)	4 Parents to great-grand- parents (maximum 16)	5 Grandparents to great-grand- parents (maximum 32)
0	2 060 371	5 906 864	8 843 359	11 167 360	11 577 116
1	459 927	132 151	71 871	29 834	326
2	9 058 335	981 142	364 029	128 721	847
3	-	341 839	129 743	31 375	113
4	-	4 216 637	584 953	85 193	166
5	-	-	108 004	18 920	25
6	-	-	364 184	38 399	28
7	-	-	210 419	15 494	4
8	-	-	902 071	27 056	2
9	-	-	-	7 372	0
10	-	-	-	10 853	6
11	-	-	-	4 693	0
12	-	-	-	6 459	0
13	-	-	-	2 071	0
14	-	-	-	2 682	0
15	-	-	-	1 003	0
16	-	-	-	1 148	0
17	-	-	-	-	0
18	-	-	-	-	0
19	-	-	-	-	0
20	-	-	-	-	0
21	-	-	-	-	0
22	-	-	-	-	0
23	-	-	-	-	0
24	-	-	-	-	0
25	-	-	-	-	0
26	-	-	-	-	0
27	-	-	-	-	0
28	-	-	-	-	0
29	-	-	-	-	0
30	-	-	-	-	0
31	-	-	-	-	0
32	-	-	-	-	0
Total	9 518 262	5 671 769	2 735 274	411 273	1 517

**Table 15A**  
**Number of index persons by number of siblings and year of birth**

Number of siblings	Year of birth for the index								
	1932–1939	1940–1949	1950–1959	1960–1969	1970–1979	1980–1989	1990–1999	2000–2009	2010 -
0	262 755	188 218	93 491	71 132	62 101	40 684	50 082	58 481	167 894
1	157 376	347 292	318 831	394 155	403 867	328 152	400 293	441 375	372 721
2	106 198	273 546	280 679	335 465	313 452	328 889	323 856	304 880	165 896
3	61 342	159 822	167 649	171 550	142 132	163 854	155 811	121 188	57 741
4	33 657	86 106	88 563	81 349	64 223	75 443	73 480	51 407	23 106
5	17 901	46 228	47 282	40 596	31 060	36 137	34 849	23 443	10 518
6	10 007	25 508	25 645	20 661	14 781	16 900	16 540	10 907	5 011
7	5 600	13 703	13 817	10 185	6 936	7 873	8 287	5 990	2 787
8-	6 552	16 244	16 179	10 752	7 336	7 703	9 054	6 821	3 506
Total	661 388	1 156 667	1 052 136	1 135 845	1 045 888	1 005 635	1 072 252	1 024 492	809 180

**Table 15B**  
**Number of index persons by number of siblings and year of birth, percent**

Number of siblings	Year of birth for the index								
	1932–1939	1940–1949	1950–1959	1960–1969	1970–1979	1980–1989	1990–1999	2000–2009	2010 -
0	40	16	9	6	6	4	5	6	21
1	24	30	30	35	39	33	37	43	46
2	16	24	27	30	30	33	30	30	21
3	9	14	16	15	14	16	15	12	7
4	5	7	8	7	6	8	7	5	3
5	3	4	4	4	3	4	3	2	1
6	2	2	2	2	1	2	2	1	1
7	1	1	1	1	1	1	1	1	0
8-	1	1	2	1	1	1	1	1	0

## Appendix 2

# Tables showing adopted index persons and adoptive parents

**Multi-Generation Register version 2016-12-31**

**Table 16**  
**Number and share of adopted index persons, by year of birth and country of birth**

Birth year	Number of index persons	Born in Sweden		Foreign-born		Unknown country of birth	
		Number	Share	Number	Share	Number	Share
1932	904	837	0,93	65	0,07	2	0,00
1933	1 110	1 014	0,91	95	0,09	1	0,00
1934	1 268	1 112	0,88	155	0,12	1	0,00
1935	1 507	1 243	0,82	264	0,18	0	0,00
1936	1 660	1 366	0,82	293	0,18	1	0,00
1937	1 887	1 508	0,80	376	0,20	3	0,00
1938	2 167	1 692	0,78	471	0,22	4	0,00
1939	2 353	1 780	0,76	571	0,24	2	0,00
1940	2 605	2 070	0,79	533	0,20	2	0,00
1941	2 803	2 345	0,84	455	0,16	3	0,00
1942	2 790	2 484	0,89	304	0,11	2	0,00
1943	3 134	2 899	0,93	231	0,07	4	0,00
1944	3 331	3 130	0,94	195	0,06	6	0,00
1945	3 518	3 336	0,95	180	0,05	2	0,00
1946	3 144	2 970	0,94	170	0,05	4	0,00
1947	2 936	2 806	0,96	129	0,04	1	0,00
1948	2 851	2 729	0,96	118	0,04	4	0,00
1949	2 767	2 627	0,95	136	0,05	4	0,00
1950	2 778	2 642	0,95	136	0,05	0	0,00
1951	2 627	2 503	0,95	120	0,05	4	0,00
1952	2 606	2 478	0,95	124	0,05	4	0,00
1953	2 438	2 311	0,95	127	0,05	0	0,00
1954	2 215	2 066	0,93	145	0,07	4	0,00
1955	2 371	2 231	0,94	137	0,06	3	0,00
1956	2 273	2 130	0,94	142	0,06	1	0,00
1957	2 252	2 123	0,94	129	0,06	0	0,00
1958	2 265	2 145	0,95	116	0,05	4	0,00
1959	2 241	2 077	0,93	158	0,07	6	0,00
1960	2 256	2 087	0,93	167	0,07	2	0,00
1961	2 301	2 126	0,92	166	0,07	9	0,00
1962	2 469	2 285	0,93	173	0,07	11	0,00
1963	2 591	2 344	0,90	238	0,09	9	0,00
1964	2 829	2 545	0,90	272	0,10	12	0,00
1965	2 645	2 293	0,87	349	0,13	3	0,00
1966	2 593	2 142	0,83	447	0,17	4	0,00
1967	2 500	1 885	0,75	612	0,24	3	0,00
1968	2 213	1 534	0,69	678	0,31	1	0,00
1969	2 156	1 295	0,60	861	0,40	0	0,00
1970	2 375	1 304	0,55	1 068	0,45	3	0,00
1971	2 500	1 253	0,50	1 247	0,50	0	0,00
1972	2 610	1 115	0,43	1 495	0,57	0	0,00
1973	2 394	1 020	0,43	1 373	0,57	1	0,00
1974	2 524	895	0,35	1 629	0,65	0	0,00
1975	2 316	727	0,31	1 588	0,69	1	0,00
1976	2 508	633	0,25	1 875	0,75	0	0,00
1977	2 234	547	0,24	1 687	0,76	0	0,00
1978	2 095	539	0,26	1 555	0,74	1	0,00
1979	2 033	482	0,24	1 551	0,76	0	0,00
1980	2 263	470	0,21	1 793	0,79	0	0,00
1981	2 199	437	0,20	1 761	0,80	1	0,00

Table 16 (cont.)

Birth year	Number of index persons	Born in Sweden		Foreign-born		Unknown country of birth	
		Number	Share	Number	Share	Number	Share
1982	2 009	362	0,18	1 647	0,82	0	0,00
1983	1 972	318	0,16	1 654	0,84	0	0,00
1984	1 980	304	0,15	1 676	0,85	0	0,00
1985	1 949	329	0,17	1 620	0,83	0	0,00
1986	1 922	294	0,15	1 628	0,85	0	0,00
1987	1 775	307	0,17	1 468	0,83	0	0,00
1988	1 475	313	0,21	1 162	0,79	0	0,00
1989	1 383	270	0,20	1 113	0,80	0	0,00
1990	1 414	306	0,22	1 108	0,78	0	0,00
1991	1 506	262	0,17	1 244	0,83	0	0,00
1992	1 334	236	0,18	1 097	0,82	1	0,00
1993	1 190	188	0,16	1 002	0,84	0	0,00
1994	1 131	149	0,13	982	0,87	0	0,00
1995	1 087	148	0,14	939	0,86	0	0,00
1996	1 029	119	0,12	910	0,88	0	0,00
1997	1 092	94	0,09	997	0,91	1	0,00
1998	1 108	89	0,08	1 019	0,92	0	0,00
1999	1 114	86	0,08	1 028	0,92	0	0,00
2000	1 063	87	0,08	976	0,92	0	0,00
2001	1 200	85	0,07	1 115	0,93	0	0,00
2002	1 228	94	0,08	1 134	0,92	0	0,00
2003	1 242	87	0,07	1 155	0,93	0	0,00
2004	1 066	77	0,07	988	0,93	1	0,00
2005	1 064	80	0,08	984	0,92	0	0,00
2006	872	93	0,11	779	0,89	0	0,00
2007	907	90	0,10	817	0,90	0	0,00
2008	857	96	0,11	761	0,89	0	0,00
2009	810	147	0,18	663	0,82	0	0,00
2010	732	165	0,23	567	0,77	0	0,00
2011	618	154	0,25	464	0,75	0	0,00
2012	507	145	0,29	362	0,71	0	0,00
2013	434	155	0,36	279	0,64	0	0,00
2014	352	166	0,47	186	0,53	0	0,00
2015	237	138	0,58	99	0,42	0	0,00
2016	76	48	0,63	28	0,37	0	0,00
Total	159 140	96 693	0,61	62 311	0,39	136	0,00

**Table 17**  
**Number and share of adopted index persons born in Sweden, by year of birth, information on adoptive mother and father and adoption date**

Birth year	Number of index persons	Adoptive mother		Adoption date mother		Adoptive father		Adoption date father	
		Number	Share	Number	Share	Number	Share	Number	Share
1932	837	391	0,47	5	0,01	472	0,56	5	0,01
1933	1 014	527	0,52	5	0,01	634	0,63	12	0,02
1934	1 112	563	0,51	11	0,02	731	0,66	10	0,01
1935	1 243	610	0,49	8	0,01	831	0,67	11	0,01
1936	1 366	693	0,51	12	0,02	904	0,66	18	0,02
1937	1 508	827	0,55	13	0,02	1 070	0,71	20	0,02
1938	1 692	876	0,52	11	0,01	1 187	0,70	14	0,01
1939	1 780	969	0,54	10	0,01	1 285	0,72	22	0,02
1940	2 070	1 136	0,55	11	0,01	1 567	0,76	30	0,02
1941	2 345	1 275	0,54	18	0,01	1 822	0,78	35	0,02
1942	2 484	1 391	0,56	32	0,02	1 956	0,79	38	0,02
1943	2 899	1 623	0,56	20	0,01	2 317	0,80	29	0,01
1944	3 130	1 706	0,55	29	0,02	2 592	0,83	72	0,03
1945	3 336	1 829	0,55	27	0,01	2 825	0,85	87	0,03
1946	2 970	1 591	0,54	27	0,02	2 514	0,85	64	0,03
1947	2 806	1 555	0,55	33	0,02	2 443	0,87	75	0,03
1948	2 729	1 561	0,57	28	0,02	2 416	0,89	79	0,03
1949	2 627	1 477	0,56	26	0,02	2 366	0,90	90	0,04
1950	2 642	1 522	0,58	28	0,02	2 387	0,90	85	0,04
1951	2 503	1 490	0,60	22	0,01	2 306	0,92	75	0,03
1952	2 478	1 431	0,58	27	0,02	2 305	0,93	104	0,05
1953	2 311	1 356	0,59	39	0,03	2 161	0,94	120	0,06
1954	2 066	1 187	0,57	27	0,02	1 952	0,94	117	0,06
1955	2 231	1 357	0,61	30	0,02	2 079	0,93	96	0,05
1956	2 130	1 237	0,58	33	0,03	1 997	0,94	133	0,07
1957	2 123	1 272	0,60	33	0,03	1 997	0,94	151	0,08
1958	2 145	1 273	0,59	40	0,03	2 031	0,95	154	0,08
1959	2 077	1 207	0,58	36	0,03	1 974	0,95	167	0,08
1960	2 087	1 196	0,57	52	0,04	1 991	0,95	184	0,09
1961	2 126	1 175	0,55	42	0,04	2 030	0,95	227	0,11
1962	2 285	1 188	0,52	46	0,04	2 196	0,96	260	0,12
1963	2 344	1 195	0,51	44	0,04	2 235	0,95	271	0,12
1964	2 545	1 225	0,48	55	0,04	2 444	0,96	360	0,15
1965	2 293	1 077	0,47	61	0,06	2 206	0,96	361	0,16
1966	2 142	958	0,45	46	0,05	2 061	0,96	362	0,18
1967	1 885	789	0,42	57	0,07	1 814	0,96	402	0,22
1968	1 534	615	0,40	53	0,09	1 444	0,94	334	0,23
1969	1 295	496	0,38	64	0,13	1 216	0,94	332	0,27
1970	1 304	497	0,38	72	0,14	1 232	0,94	383	0,31
1971	1 253	420	0,34	85	0,20	1 179	0,94	431	0,37
1972	1 115	364	0,33	81	0,22	1 037	0,93	391	0,38
1973	1 020	307	0,30	117	0,38	939	0,92	456	0,49
1974	895	265	0,30	82	0,31	838	0,94	390	0,47
1975	727	217	0,30	85	0,39	682	0,94	341	0,50
1976	633	235	0,37	95	0,40	586	0,93	323	0,55
1977	547	181	0,33	80	0,44	504	0,92	281	0,56
1978	539	181	0,34	93	0,51	497	0,92	310	0,62
1979	482	157	0,33	75	0,48	446	0,93	259	0,58
1980	470	170	0,36	84	0,49	429	0,91	267	0,62
1981	437	147	0,34	80	0,54	404	0,92	260	0,64

Table 17 (cont.)

Birth year	Number of index persons	Adoptive mother		Adoption date mother		Adoptive father		Adoption date father	
		Number	Share	Number	Share	Number	Share	Number	Share
1982	362	126	0,35	64	0,51	341	0,94	225	0,66
1983	318	97	0,31	68	0,70	296	0,93	219	0,74
1984	304	95	0,31	56	0,59	274	0,90	200	0,73
1985	329	89	0,27	52	0,58	309	0,94	232	0,75
1986	294	88	0,30	55	0,63	268	0,91	208	0,78
1987	307	91	0,30	52	0,57	294	0,96	235	0,80
1988	313	93	0,30	62	0,67	287	0,92	246	0,86
1989	270	85	0,31	60	0,71	253	0,94	223	0,88
1990	306	88	0,29	71	0,81	283	0,92	266	0,94
1991	262	86	0,33	85	0,99	241	0,92	240	1,00
1992	236	72	0,31	72	1,00	220	0,93	220	1,00
1993	188	53	0,28	53	1,00	182	0,97	182	1,00
1994	149	46	0,31	46	1,00	139	0,93	139	1,00
1995	148	53	0,36	53	1,00	136	0,92	136	1,00
1996	119	39	0,33	39	1,00	112	0,94	112	1,00
1997	94	30	0,32	30	1,00	89	0,95	89	1,00
1998	89	26	0,29	26	1,00	82	0,92	82	1,00
1999	86	24	0,28	24	1,00	81	0,94	81	1,00
2000	87	31	0,36	31	1,00	80	0,92	80	1,00
2001	85	26	0,31	26	1,00	77	0,91	77	1,00
2002	94	36	0,38	36	1,00	77	0,82	77	1,00
2003	87	33	0,38	33	1,00	68	0,78	68	1,00
2004	77	34	0,44	34	1,00	53	0,69	53	1,00
2005	80	43	0,54	43	1,00	53	0,66	53	1,00
2006	93	46	0,49	46	1,00	58	0,62	58	1,00
2007	90	55	0,61	55	1,00	49	0,54	49	1,00
2008	96	61	0,64	61	1,00	49	0,51	49	1,00
2009	147	110	0,75	110	1,00	63	0,43	63	1,00
2010	165	136	0,82	136	1,00	50	0,30	50	1,00
2011	154	139	0,90	139	1,00	37	0,24	37	1,00
2012	145	123	0,85	123	1,00	35	0,24	35	1,00
2013	155	147	0,95	147	1,00	21	0,14	21	1,00
2014	166	155	0,93	155	1,00	27	0,16	27	1,00
2015	138	130	0,94	130	1,00	24	0,17	24	1,00
2016	48	48	1,00	48	1,00	3	0,06	3	1,00
Total	96 693	49 621	0,51	4 511	0,09	84 242	0,87	13 257	0,16



**Table 18**  
**Number and share of adopted foreign-born index persons, by year of birth, information on adoptive mother and father and adoption date**

Birth year	Number of index persons	Adoptive mother		Adoption date mother		Adoptive father		Adoption date father	
		Number	Share	Number	Share	Number	Share	Number	Share
1932	65	35	0,54	0	0,00	32	0,49	0	0,00
1933	95	55	0,58	1	0,02	40	0,42	0	0,00
1934	155	83	0,54	5	0,06	88	0,57	4	0,05
1935	264	167	0,63	5	0,03	141	0,53	4	0,03
1936	293	186	0,63	2	0,01	164	0,56	2	0,01
1937	376	258	0,69	3	0,01	240	0,64	3	0,01
1938	471	319	0,68	3	0,01	295	0,63	3	0,01
1939	571	367	0,64	6	0,02	350	0,61	6	0,02
1940	533	362	0,68	3	0,01	380	0,71	2	0,01
1941	455	302	0,66	5	0,02	348	0,76	6	0,02
1942	304	175	0,58	5	0,03	218	0,72	5	0,02
1943	231	126	0,55	3	0,02	177	0,77	4	0,02
1944	195	84	0,43	3	0,04	152	0,78	6	0,04
1945	180	54	0,30	3	0,06	144	0,80	5	0,03
1946	170	65	0,38	2	0,03	127	0,75	6	0,05
1947	129	61	0,47	0	0,00	108	0,84	3	0,03
1948	118	55	0,47	0	0,00	93	0,79	3	0,03
1949	136	77	0,57	0	0,00	112	0,82	2	0,02
1950	136	77	0,57	3	0,04	114	0,84	3	0,03
1951	120	63	0,53	4	0,06	98	0,82	5	0,05
1952	124	68	0,55	3	0,04	104	0,84	5	0,05
1953	127	71	0,56	2	0,03	111	0,87	6	0,05
1954	145	74	0,51	2	0,03	116	0,80	6	0,05
1955	137	73	0,53	1	0,01	121	0,88	5	0,04
1956	142	83	0,58	2	0,02	119	0,84	9	0,08
1957	129	73	0,57	5	0,07	108	0,84	10	0,09
1958	116	64	0,55	4	0,06	98	0,84	11	0,11
1959	158	84	0,53	3	0,04	134	0,85	14	0,10
1960	167	95	0,57	1	0,01	149	0,89	11	0,07
1961	166	92	0,55	3	0,03	142	0,86	18	0,13
1962	173	108	0,62	4	0,04	156	0,90	15	0,10
1963	238	151	0,63	3	0,02	217	0,91	19	0,09
1964	272	204	0,75	3	0,01	247	0,91	19	0,08
1965	349	273	0,78	5	0,02	317	0,91	14	0,04
1966	447	376	0,84	11	0,03	413	0,92	22	0,05
1967	612	536	0,88	11	0,02	562	0,92	19	0,03
1968	678	602	0,89	10	0,02	634	0,94	24	0,04
1969	861	791	0,92	7	0,01	823	0,96	33	0,04
1970	1 068	973	0,91	9	0,01	1 012	0,95	36	0,04
1971	1 247	1 172	0,94	8	0,01	1 193	0,96	26	0,02
1972	1 495	1 398	0,94	20	0,01	1 425	0,95	58	0,04
1973	1 373	1 304	0,95	22	0,02	1 319	0,96	45	0,03
1974	1 629	1 550	0,95	26	0,02	1 555	0,95	61	0,04
1975	1 588	1 492	0,94	19	0,01	1 527	0,96	66	0,04
1976	1 875	1 797	0,96	13	0,01	1 805	0,96	45	0,02
1977	1 687	1 607	0,95	33	0,02	1 625	0,96	63	0,04
1978	1 555	1 486	0,96	32	0,02	1 504	0,97	62	0,04
1979	1 551	1 483	0,96	35	0,02	1 495	0,96	75	0,05
1980	1 793	1 722	0,96	36	0,02	1 738	0,97	62	0,04
1981	1 761	1 695	0,96	48	0,03	1 688	0,96	79	0,05

Table 18 (cont.)

Birth year	Number of index persons	Adoptive mother		Adoption date mother		Adoptive father		Adoption date father	
		Number	Share	Number	Share	Number	Share	Number	Share
1982	1 647	1 572	0,95	63	0,04	1 583	0,96	101	0,06
1983	1 654	1 572	0,95	64	0,04	1 580	0,96	99	0,06
1984	1 676	1 594	0,95	102	0,06	1 594	0,95	141	0,09
1985	1 620	1 549	0,96	134	0,09	1 543	0,95	165	0,11
1986	1 628	1 554	0,95	186	0,12	1 564	0,96	218	0,14
1987	1 468	1 404	0,96	252	0,18	1 400	0,95	274	0,20
1988	1 162	1 099	0,95	340	0,31	1 088	0,94	355	0,33
1989	1 113	1 036	0,93	465	0,45	1 042	0,94	491	0,47
1990	1 108	1 038	0,94	748	0,72	1 044	0,94	759	0,73
1991	1 244	1 176	0,95	1 171	1,00	1 185	0,95	1 181	1,00
1992	1 097	1 028	0,94	1 028	1,00	1 046	0,95	1 046	1,00
1993	1 002	933	0,93	933	1,00	935	0,93	935	1,00
1994	982	929	0,95	929	1,00	916	0,93	916	1,00
1995	939	889	0,95	889	1,00	863	0,92	863	1,00
1996	910	863	0,95	863	1,00	841	0,92	841	1,00
1997	997	941	0,94	941	1,00	911	0,91	911	1,00
1998	1 019	962	0,94	962	1,00	933	0,92	933	1,00
1999	1 028	984	0,96	984	1,00	936	0,91	936	1,00
2000	976	932	0,95	932	1,00	867	0,89	867	1,00
2001	1 115	1 065	0,96	1 065	1,00	997	0,89	997	1,00
2002	1 134	1 098	0,97	1 098	1,00	1 035	0,91	1 035	1,00
2003	1 155	1 120	0,97	1 120	1,00	1 036	0,90	1 036	1,00
2004	988	958	0,97	958	1,00	898	0,91	898	1,00
2005	984	956	0,97	956	1,00	892	0,91	892	1,00
2006	779	745	0,96	745	1,00	703	0,90	703	1,00
2007	817	796	0,97	796	1,00	729	0,89	729	1,00
2008	761	734	0,96	734	1,00	687	0,90	687	1,00
2009	663	647	0,98	647	1,00	614	0,93	614	1,00
2010	567	547	0,96	547	1,00	522	0,92	522	1,00
2011	464	443	0,95	443	1,00	409	0,88	409	1,00
2012	362	336	0,93	336	1,00	311	0,86	311	1,00
2013	279	255	0,91	255	1,00	235	0,84	235	1,00
2014	186	178	0,96	178	1,00	143	0,77	143	1,00
2015	99	87	0,88	87	1,00	67	0,68	67	1,00
2016	28	22	0,79	22	1,00	12	0,43	12	1,00
Total	62 311	56 510	0,91	22 410	0,40	57 039	0,92	22 332	0,39



# Appendix 3

## Personal records

<b>PERSONAKT blad nr</b> Akten omfattar INDIVIDUAL blad nr 1. .... DOCUMENT		<b>1 Förnamn</b> Christian name		<b>2 Efternamn</b> Surname	
<b>6 Yrke</b> Occupation		<b>3 Kön</b> sex		<b>4 Födelselid och nummer</b> Personal number incl date of birth	
<b>8 Födelse(hem)ort</b> Place of birth		<b>7 Medborgare i</b> Citizenship			
<b>10 Member of the Swedish church</b> Tillhör..... svenska kyrkan		<b>11</b> Baptism Doft av svenska kyrkan <input type="checkbox"/> Doft i annan ordning		<b>12 Konfirmerad</b> Confirmation	
<b>13</b> Ett föräldras civilstånd m m Marital status of the parents		<b>14</b> Adopterad Adopted		<b>15</b> Ommyndigförklarad Incapacitated	
<b>16</b> Efternamn, förnamn och födelse(hem)ort Surname, christian name and place birth		<b>Fader</b> Father		<b>Personnummer</b> Personal number	
<b>Moder</b> Mother		<b>Upplöst</b> år, mån, dag Date of divorce or death		<b>Personnummer</b> Personal number	
<b>17</b> Nr Date of marriage		<b>1</b> Date of marriage		<b>Personnummer</b> Personal number	
<b>2</b> Date of divorce or death		<b>2</b> Date of divorce or death		<b>Personnummer</b> Personal number	
<b>3</b> Date of death		<b>3</b> Date of death		<b>Personnummer</b> Personal number	
<b>18</b> Kön Sex		<b>Personnummer</b> Personal number		<b>Den andra förälderns efternamn och förnamn</b> Name of the father/mother	
<b>Barn Children</b>		<b>Förnamn (övre raden) och födelse(hem)ort (undre raden)</b> Christian name and place of birth		<b>Personnummer</b> Personal number	

RSV 7280 Utg 4 DB 807341 ALLF 445 083

19 Inflyttad (överförd) Migrated to		Nr. År, mån, dag	Till församling (oberfintligregister), fastighet/uppdrag
1 year,	Parish, real estate	11	
2 month,		12	
3 day,		13	
4		14	
5		15	
6		16	
7		17	
8		18	
9		19	
10		20	
20 Anteckningar om adoptivföräldrar eller adoptivbarn, ommyndigförklaring m m Notes: Adoptive parents, incapacitated etc			
21 Död eller dödförklarad		22 Dödsorsak	23 Utvandrad
Dead or declared dead		Cause of death	Emigrated
Läkare		Medical officer	
24 Bladet upprättat		24 This form was drawn up: Date	
25 Initialer och efternamn		25 Intials and surname	
År, mån, dag			

Blad nr

ISSN 1654-4331 (Online)

All officiell statistik finns på: **www.scb.se**  
Statistikservice: tfn 010-479 50 00

All official statistics can be found at: **www.scb.se**  
Statistics service, phone +46 10 479 50 00