

How's Sweden Feeling? A national public health survey

Hello! You are receiving this letter because you have been selected to participate in the National Public Health Survey by the Public Health Agency of Sweden.

This survey enables us to track the development of health trends in Sweden. Is health in Sweden improving? Does poor health impact specific groups in specific ways? Your responses provide evidence on which political decision-makers can base decisions that concern your health.

The Public Health Agency of Sweden is conducting this survey together with Sweden's 21 regions. Statistics Sweden is responsible for distributing this survey and collecting responses.

Your responses make a difference and will remain confidential

You are one of 110,000 individuals age 16 and over randomly chosen from the population register. Your responses to the survey can't be replaced anyone else's. Participation in the survey is voluntary, but note that your participation is invaluable. The quality of the survey improves with each response we receive, thus ensuring effective healthcare measures that will guarantee your own health and that of Sweden at large.

Your responses are confidential, and any use of the results of the survey will not present your identity together with your responses.

How to respond

Go to www.insamling.scb.se/eid to respond to the survey. Use your eID or the log-in details you have received to log in.

If you decline to participate, please contact us. You will not receive any survey reminders.

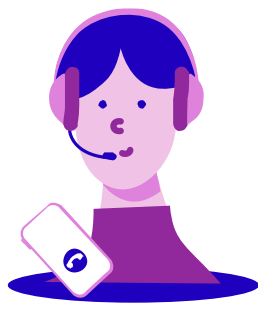
Thanks in advance for your help!

Sincerely,

Joakim Stymne, Director General, Statistics Sweden

Karin Tegmark Wisell, Director-General, Public Health Agency of Sweden

Any questions? Please get in touch!



Questions regarding the survey

Statistics Sweden survey participant assistance

010-479 69 30

enkat@scb.se

SCB, D/INS/IH, 701 89 Örebro

www.scb.se/halsa

About the survey

Who will use the responses, and how?

The results of the survey will be used to produce statistics to benefit society and to further the missions of the Public Health Agency of Sweden and the regions, including annual public health reporting and follow-up of the health of various societal groups.

Your responses will be supplemented with data from Statistics Sweden. These data include information about gender, age, family status, number of children, birthplace and parental birthplace, year of immigration, country of origin, housing area, geographical data, education, profession, employment sector, income, benefits and sickness and activity compensation. Information about sick leave is retrieved from the Swedish Social Insurance Agency, and information about health care, pharmaceutical use and future causes of death are retrieved from the Swedish National Board of Health and Welfare.

Statistics Sweden processes the data before submitting them to the Public Health Agency of Sweden for further processing and analysis.

The Public Health Agency of Sweden then forwards the data to those regions which have ordered these data. Data processing by the Public Health Agency of Sweden and those ordering the data is subject to statistical confidentiality (see below). The data may be provided to researchers or others for the production of statistics. Such research and statistical activities are also subject to confidentiality requirements.

To enable follow-up of register data and future surveys, SCB generates serial numbers which are linked to the personal ID

numbers of survey participants. Information linking serial numbers with personal ID numbers is saved separately from survey responses and register data, and is delivered to the Public Health Agency of Sweden when processing at Statistics Sweden is complete.

How are responses made confidential?

Any use of the results of the survey will not present your identity together with your responses. Information regarding personal and financial circumstances is subject to statistical confidentiality, and all those working on the survey are subject to professional secrecy. Confidentiality is guaranteed under Chapter 24, Section 8 of the Public Access to Information and Secrecy Act. Such confidentiality also applies to the activities of the Public Health Agency of Sweden.

How are personal data processed?

Statistics Sweden is the data controller for the personal data processing which it carries out. The Public Health Agency of Sweden and the regions are the data controllers for the personal data processing they carry out.

Your personal data will be processed according to the EU Data Protection Regulation, the Official Statistics Act (2001:99) and Ordinance (2001:100) and other applicable legislation.

The legal basis invoked by Statistics Sweden and the Public Health Agency of Sweden to process your personal data is to carry out a task in the public interest (the production of statistics). More information about how Statistics Sweden and the Public Health Agency of Sweden process personal data can be found at <https://www.scb.se/en/About-us/personal-data/> and <https://www.folkhalsomyndigheten.se/the-public-health-agency-of-sweden/about-us/processing-of-personal-data/>.

You have the right to receive a copy, a so-called extract from the register, of your personal data which are processed by Statistics Sweden. Visit www.scb.se/registerutdrag. You also have the right to require that your data be deleted. This right also applies to data held by the Public Health Agency of Sweden.

If you are dissatisfied with the processing of your personal data, you can lodge a complaint with the Swedish Authority for Privacy Protection.

Questions about personal data processing?

Contact Statistics Sweden's data controller:

010-479 40 00, dataskyddsbud@scb.se,
SCB, 701 89 Örebro

Contact the Public Health Agency of Sweden:

Data controller:

dataskyddsbud@folkhalsomyndigheten.se,

Public Health Agency of Sweden:

Folkhälsomyndigheten, 171 82 Solna

www.folkhalsomyndigheten.se

Where are results published?

Survey results are published on the website of the Public Health Agency of Sweden: www.folkhalsomyndigheten.se

We describe Sweden



Foto: iStock, Naruedom

Official statistics describe Sweden and provide objective and relevant information to enable society to grow. Official statistics also enable public discourse and decisions based in fact. Statistical authorities produce statistics on behalf of the Government.