



MAGNIFICENT

Maps

AND WHERE TO FIND THEM



Agenda

- What is *MapAnalyser*?
- Maps in www.statbank.dk
- Whats new and comming up
- Where are we heading
- Classic use cases: Web and PDF
- Interactive publication prototype



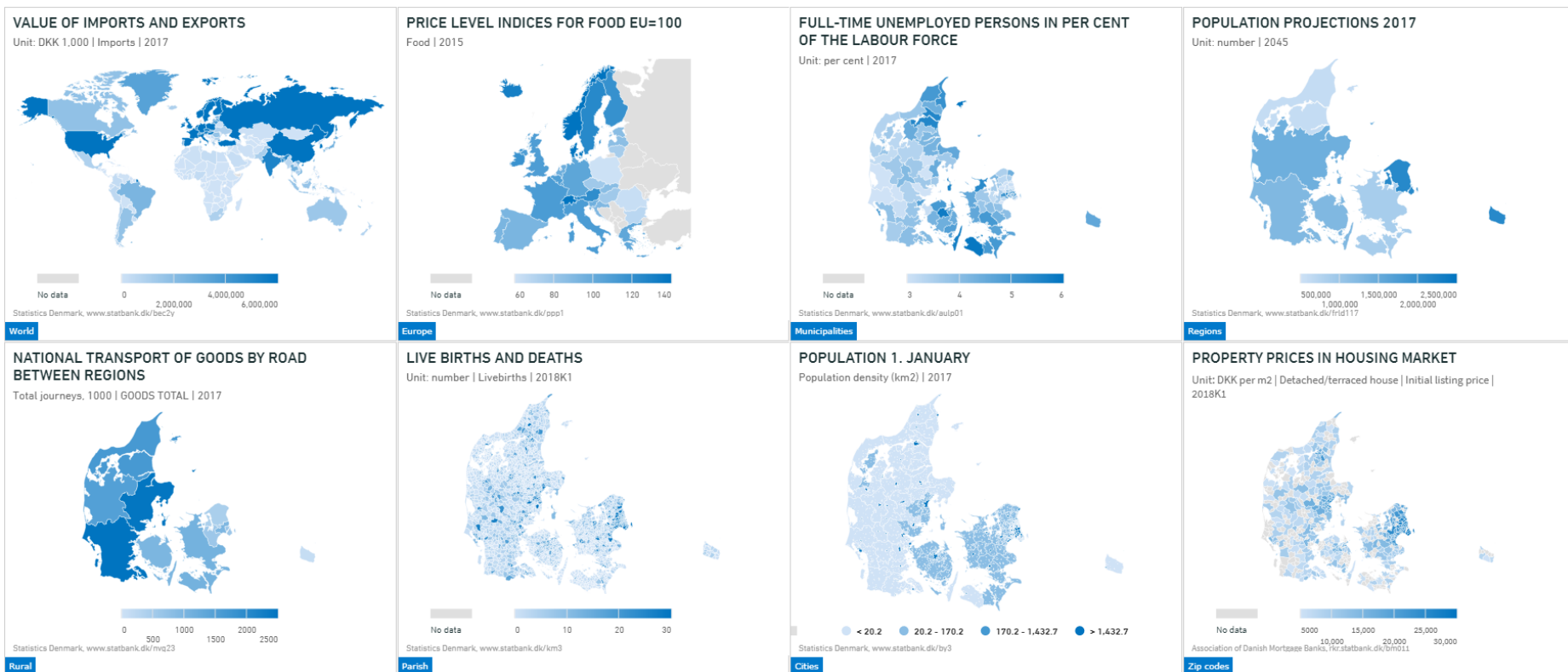
What is *MapAnalyser*?

- HTML, CSS and JavaScript application showing maps (and charts for analysis of map data)
- Using *HighMaps*, *HighCharts*, *JsonStat* and other JavaScript libraries
- Using *api.statbank.dk* to retrieve metadata and data
- It is build into www.statbank.dk to present maps for all geographical datasets



Maps in www.statbank.dk

- Different types of maps (World, Europe, Denmark ...)



Maps in www.statbank.dk

- Applies to all datasets with a geographical distribution

ID	TITLE	MAP	OPEN
BY1	Population 1. January by urban, rural areas, age and sex	Cities	Link
BY3	Population 1. January by urban, rural areas and population, area and population density	Cities	Link
AED01	Home care, free choice (provided hours per week) by region, type of benefits, age and sex	Municipalities	Link
AED012	Recipients of home care, free choice, who use private contractor by region, type of benefits, age and sex	Municipalities	Link
AED02	Home care, free choice (provided hours average per week) by region, type of benefits, age and sex	Municipalities	Link
AED021	Home care, free choice (referral hours average per week per recipients) by region, type of benefits, age and sex	Municipalities	Link
AED022	Home care, free choice (referral hours per week) by region, type of benefits, age and sex	Municipalities	Link
AED023	Recipients of home care, free choice, by region, type of benefits, hours per week, age and sex	Municipalities	Link
AED06	Recipients referral to home care, free choice, by region, type of benefits, hours per week, age and sex	Municipalities	Link
AED07	Recipients referral to home care, nursing homes/nursing dwellings) by region, age and sex	Municipalities	Link
AED08	Recipients of rehabilitation and maintenance rehabilitation by region, type of benefits, age and sex	Municipalities	Link
AED10A	Recipients of preventative home visits by region, home visits, age and sex	Municipalities	Link
AED12	Recipients referral to home care, free choice, who use private contractor by region, type of benefits, age and sex	Municipalities	Link
AED13	First-time referred recipients, free choice, who use private contractor, by region, type of benefits, age and sex	Municipalities	Link
AED14	Recipients referral to home care, free choice, who change contractor by region, type of benefits, age and sex	Municipalities	Link
AED16	Free choice of dwelling and average waiting time for nursing homes/nursing dwellings for persons aged 67, by region, unit and diagnosis	Municipalities	Link
AED17	Home visits implemented as planned by region	Municipalities	Link
AED19	Discharges and length of stay (days) for persons aged 67, by region, unit and diagnosis	Municipalities	Link
AED20	Clinical pathways and readmissions for persons aged 67, by region, unit and diagnosis	Municipalities	Link
AED21	Service indicators (per cent of all individuals) by region and services	Municipalities	Link



Whats new and comming up ...

New since last year ...

- Different classification categories ([example](#))
- More maps (e.g. [Cities](#))
- Bug fixes and minor improvements
- *Features being tested ...*
 - Zoom to specified area on the map
 - Present only subset of the map
 - Apply different styles
 - Bubble maps

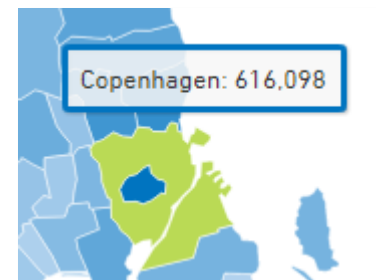


You can try it out ...

- Download HTML-version of the map tool here:
 - www.statbank.dk/statbank55/mapanalyser.zip
 - Unzip and run e.g: <http://MyLocalserver/mapanalyser.html?maintable=FOLK1A>
- Please contact me if you need help to implement it for use with PX-Web API, or help develop it further



Where are we heading



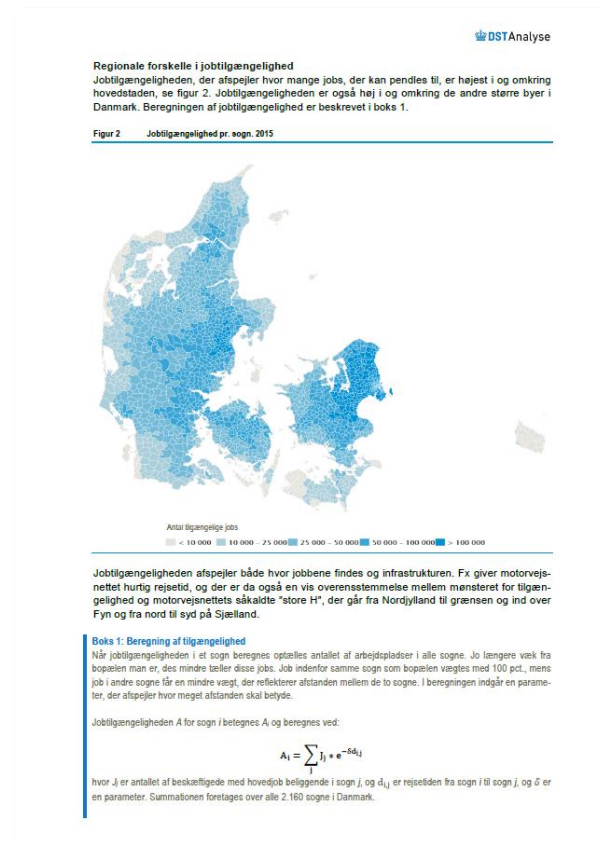
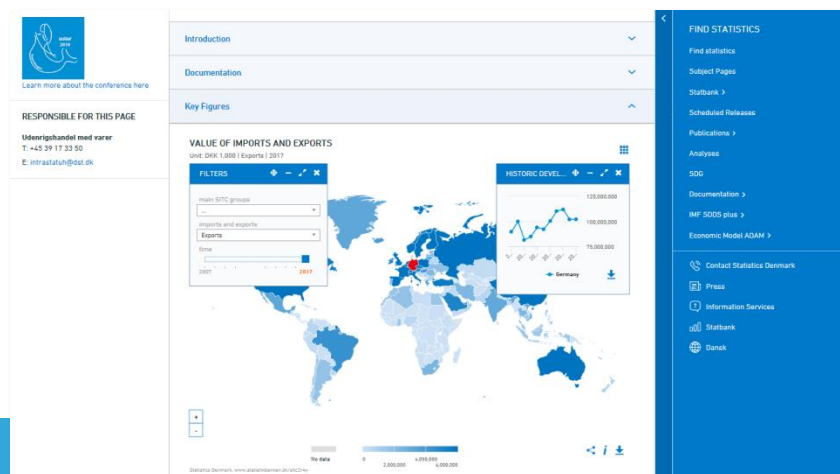
Some of the visualization principles ...

- Using dynamic charts and maps in most publications
 - Moving from PDF/Bitmap towards HTML/SVG
- Harmonised charts and maps across all statistical products
 - Common layout, access to documentation, download options, sharing and other features
- Based on the *single source* principle
 - All data representations should link back to www.statbank.dk and use api.statbank.dk



Classic use cases: Web and PDF

- In PDF publications
 - Analyses, Ten Year Review ([example](#)) and News release ([example](#))
- On Web pages
 - Subject pages ([example](#))



Interactive publication prototype

Some of the ideas behind ...

- Interact with live updated content
- Slide through it on you mobile device
- Text-To-Speech option for e.g. disabled people
- Save as PDF for archiving or video for YouTube

