



Emil Westin
2022-10-27, 13:30-14:00

Emil Westin

2022-10-27, 13:30-14:00

-  λ μ x̄ n % σ λ μ x̄ n % σ λ μ x̄ n % σ λ μ x̄ n % σ λ μ x̄ n % σ λ μ x̄ n % σ λ
μ x̄ n % σ λ μ x̄ n % σ λ μ x̄ n % σ λ μ x̄ n % σ λ μ x̄ n % σ λ μ x̄ n % σ λ μ

Introduction

- How do we work with PX in the Nordic Statistics assignment?
- Showing the new Nordic Statistics Database



About Nordic Statistics Database

- Data from all Nordic countries
- 232 matrices in 19 topic areas
- Updates once a month
- Over 9000 unique visitors in 2022 from over 113 countries



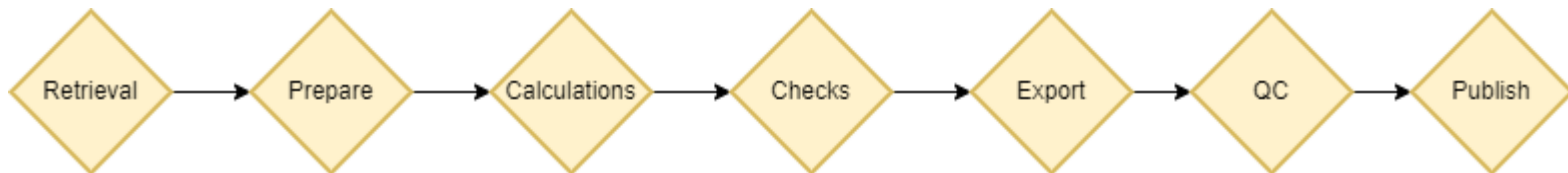
- # About Nordic Statistics Database
- Data from all Nordic countries
 - 232 matrices in 19 topic areas
 - Updates once a month
 - Over 9000 unique visitors in 2022 from over 113 countries
- 
- 



Method	Percentage
Retrieved via API:s	63%
Delivered by NSI:s	19%
Manual retrieval	8%
Under Investigation	10%



Update process



Using R

- + Great tool for statistics
- + Lot's of resources for easy retrieval from API:s
- Modifying px-files in R can be challenging

```
library(pxR)           # reading/writing R-files
library(pxweb)         # Retrieve data from pxweb-servers
library(eurostat)      # Eurostat
library(dkstat)        # Retrieve from Statistics Denmark
library(OECD)          # Retrieve from OECD SDMX queries
library(NSDB)          # internal pacakge with helper functions
```


R + P_xJob

- We have created wrapper functions around PxJob:
 - `pxjob_join(matrix_name)`
 - `pxjob_validate_metadata(in_path)`
 - `pxjob_update_metadata(in_path, meta_path)`
 - `pxjob_extract_metadata(in_path)`



Metadata

- Metadata is created from DB by `pxjob_extract_metadata`
- We edit all metadata in the generated csv file
- PX files are then updated with `pxjob_update_metadata`

filename	variablename	value/text	NOTE	NOTE	VALUE/NOTEX	INFO	SOURCE
AGRI10			In some cases there are values for all subgroups of a country Eurostat <				
AGRI10	crops		Crops classified according to Regulation (EC) No 543/2				
AGRI10	time						
AGRI10	reporting country	Finland			Includes Åland.		
AGRI10	reporting country	Åland			Data from Åland is also included in the data		
AGRI10	reporting country	Iceland			Not significant: 2021 for Area (cultivation/h		
AGRI10	reporting country	Sweden			Comment in national metadata: Temporary		
AGRI10	reporting country	EU			European Union - 27 countries (from 2020).		
AGRI10	area	Main area			The concept of 'main area' corresponds, in,		
AGRI10	area	Area (cultivation/harvested/proc			For cereals, dry pulses, root crops, industria		

metadata.csv



The csv is later modified in a script to automatically update SOURCE-information with valid clickable links

CHIL02: Fertility rates by reporting country, age and time

Choose variables

PMXMatrix	Country	url	url status	Source Table	Last observation	Last observation published	Next estimated update
CHIL02	Denmark	https://www.statistikbanken.dk/FD047	Success: [20]	MAN05201	2021	2022-03-07	2023-03-07
CHIL02	Faroe Islands	https://statbank.hagstofa.fo/pxw/	Success: [20]	IB02030_FD_FEF	2021	2022-05-17	2023-05-17
CHIL02	Greenland		Success: [20]		2021	2022-06-30	2023-06-30
CHIL02	Finland	https://statfin.stat.fi/PXWeb/pxw/	Success: [20]	12ds	2021	2022-06-30	2023-06-30
CHIL02	Finland	https://statfin.stat.fi/PXWeb/pxw/	Success: [20]	12du	2021	2022-06-30	2023-06-30
CHIL02	Åland		Success: [20]		2020	2021-09-15	2022-09-15
CHIL02	Iceland	https://px.hagstofa.is/pxen/pxw/	Success: [20]	MAN05201	2021	2022-05-17	2023-05-17
CHIL02	Iceland	https://px.hagstofa.is/pxen/pxw/	Success: [20]	MAN05202	2021	2022-05-17	2023-05-17
CHIL02	Norway	https://www.ssb.no/statbank/tab	Success: [20]	8555	2021	2022-04-13	2023-04-13
CHIL02	Norway	https://www.ssb.no/statbank/tab	Success: [20]	4232	2021	2022-04-13	2023-04-13
CHIL02	Sweden	https://view.officeapps.live.com/	Success: [20]	Åldersdifferentier	2021	2022-05-17	2023-05-17
CHIL02	EU	https://appsso.eurostat.ec.europa.eu/	Success: [20]	dems frate	2020	2022-05-17	2023-05-17

[^] About table

▼ **Contact**

^ Latest update

9/16/2022

Unit

^ **Next update**

3/7/2023

Creation date

Source

Statistics Denmark [FOD407].

Statistics Faroe Islands [IB02030 FD FERTKV5].

Delivered by National Statistics Institutes (Greenland, Åland).

Statistics Finland [12ds], [12du].

Statistics Iceland [MAN05201], [MAN05202].

Statistics Norway [8555], [4232].

Statistics Sweden [Åldersdifferentierade fruktsamhetstal, 2011-2021].

Eurostat [demo_frate] (EU).

[illegible]



<https://www.nordicstatistics.org/>

- 'Landing pages' with interactive Highchart graphs



Nordic Statistics database

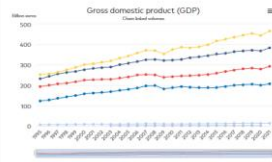


Economy

The economy section in the Nordic statistics database covers data on economic structure, foreign direct investment and national accounts.

National accounts

National accounts covers a wide range of statistics linked to each country's economic activity and development. This includes gross domestic product (GDP), import, export, employment and household consumption expenditure. Sweden has the highest inflation-adjusted GDP. The effect of the financial crisis in 2009 and the first year of the pandemic 2020 is seen in most of the Nordic countries.

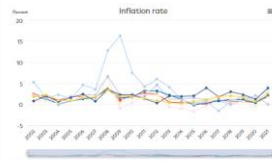


Source: Nordic statistics database, NAAC01

The figure displays GDP as chain linked volumes and thereby adjusted for inflation, measured in million euros, by country and time.

Economic structure

Economic structure covers economic key figures for the Nordic countries. This includes unemployment, inflation, interest rates and economic growth. All countries reported increased inflation rates during the financial crisis in 2008.



Source: Nordic statistics database, KEY01

The figure displays inflation rate by country and time.

Foreign direct investment

Foreign direct investment covers statistics on transactions and accumulated value of foreign direct investments, both inward investments made by the reporting country abroad, as well as outward investments made by foreign countries. The largest accumulated value of inward foreign investments is seen in Sweden.



Home / Nordic Statistics / Bioeconomy

Nordic Statistics



Choose table

Search in Nordic Statistics:

Search

+ Bioeconomy

+ Business

+ Culture

+ Demography

- Economy

- Economic structure

KEY01: Economic key-figures for the Nordic countries by

- Foreign direct investment

FODI01: Foreign direct investment in percent of GDP by c

- National accounts

NAAC01: National accounts, supply and demand, million

NAAC02: Real gross domestic product annual growth by

NAAC04: Gross domestic product in PPS/euro by reporti

NAAC05: Gross value added (ESA2010) by reporting cou

NAAC08: Employment by activity by reporting country, ur

NAAC11: Final consumption expenditure of households

+ Education

+ Elections

nordicstatistics.org

Demo



Thank you